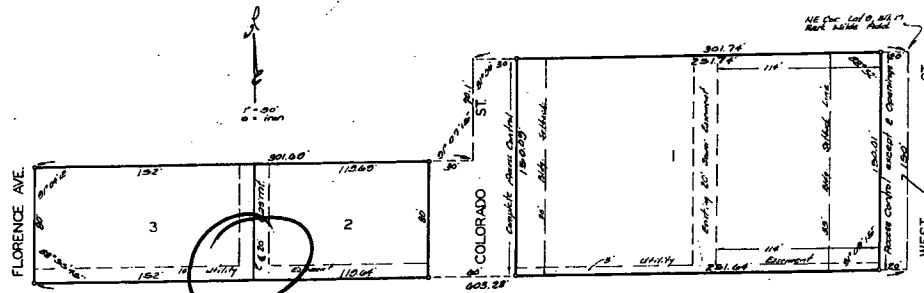


CURTIS GROVE ADDITION

WICHITA, KANSAS

VAC 2014-04



SITE

State of Kansas } s.s. We, Baughman Company,
Sedgwick County, } Surveyors in and for said county and state do
hereby certify that we have surveyed and
platted "CURTIS GROVE ADDITION" Wichita,
Kansas, and that the accompanying plat
is a true and correct exhibit of the property
surveyed, described as and being a
replat of the south 50 feet of Lot 9, all
of Lot 9, Block 17 and the N/2 of vacat-
ed Academy Ave. in Parkwilde Addition to
Wichita, Kansas.

Baughman Company

4/23/73
date William E. Koster Surveyor
William E. Koster

Know all men by these
presents that we Curtis R. Grove, President
and Vera M. Grove, Secretary of Grove
Schwinn Cyclery's, Inc. and Edna Bock
and Selma Marie Bock, single persons, have
caused the land described in the surveyors
certificate to be platted into lots and streets
to be known as "CURTIS GROVE ADDITION"
Wichita, Kansas. The easements hereby
granted as indicated for the construction
and maintenance of all public utilities, the
streets are hereby dedicated to and for
the use of the public. All egress and rights
of access to or from Colorado St. over and across
the west line of Lot 1, and to or from West St. over
and across the east line of Lot 1, are hereby grant-
ed to the City of Wichita provided however that
Lot 1 shall have access to West St. at 2 points
as shall be determined by the City Engineer of
the City of Wichita, Kansas.

Grove Schwinn Cyclery's Inc.

Curtis R. Grove President

Vera M. Grove Secretary

Edna Bock Selma Marie Bock

State of Kansas } s.s. Be it remembered that on

This plat of "CURTIS GROVE
ADDITION" Wichita, Kansas, has been sub-
mitted to and approved by the Wichita-Sedg-
wick County Metropolitan Area Planning
Commission, Wichita, Kansas.
Dated this 17th day of February 1973.

Wichita-Sedgwick County Metropolitan Area
Planning Commission.

Oliver H. Hennings Chairman
Oliver H. Hennings

Robert A. Calkin Secretary
Robert A. Calkin

This plat approved and
all dedications shown hereon accepted
by the Board of Commissioners of the
City of Wichita, Kansas, this 14th day of
August 1973.

James M. Donnell Mayor
James M. Donnell

Ralph C. Eberly City Clerk
Ralph C. Eberly

This plat approved and
all dedications shown hereon accepted
by the Board of Commissioners, Sedgwick
county, Kansas, this 14th day of September 1973.

Earl E. Ruck Chairman
Earl E. Ruck

Elmer S. Felts Commissioner
Elmer S. Felts

Tom Scott Commissioner
Tom Scott

Marie Warden County Clerk
Marie Warden

this 17 day of September 1973
Entered on transfer record

137 Marie Warden County Clerk