



Savoy Company, P.A.

433 S. Hydraulic
Wichita, KS 67211-1911

PH (316) 265-0005
FAX (316) 265-0275
www.savoyco.com

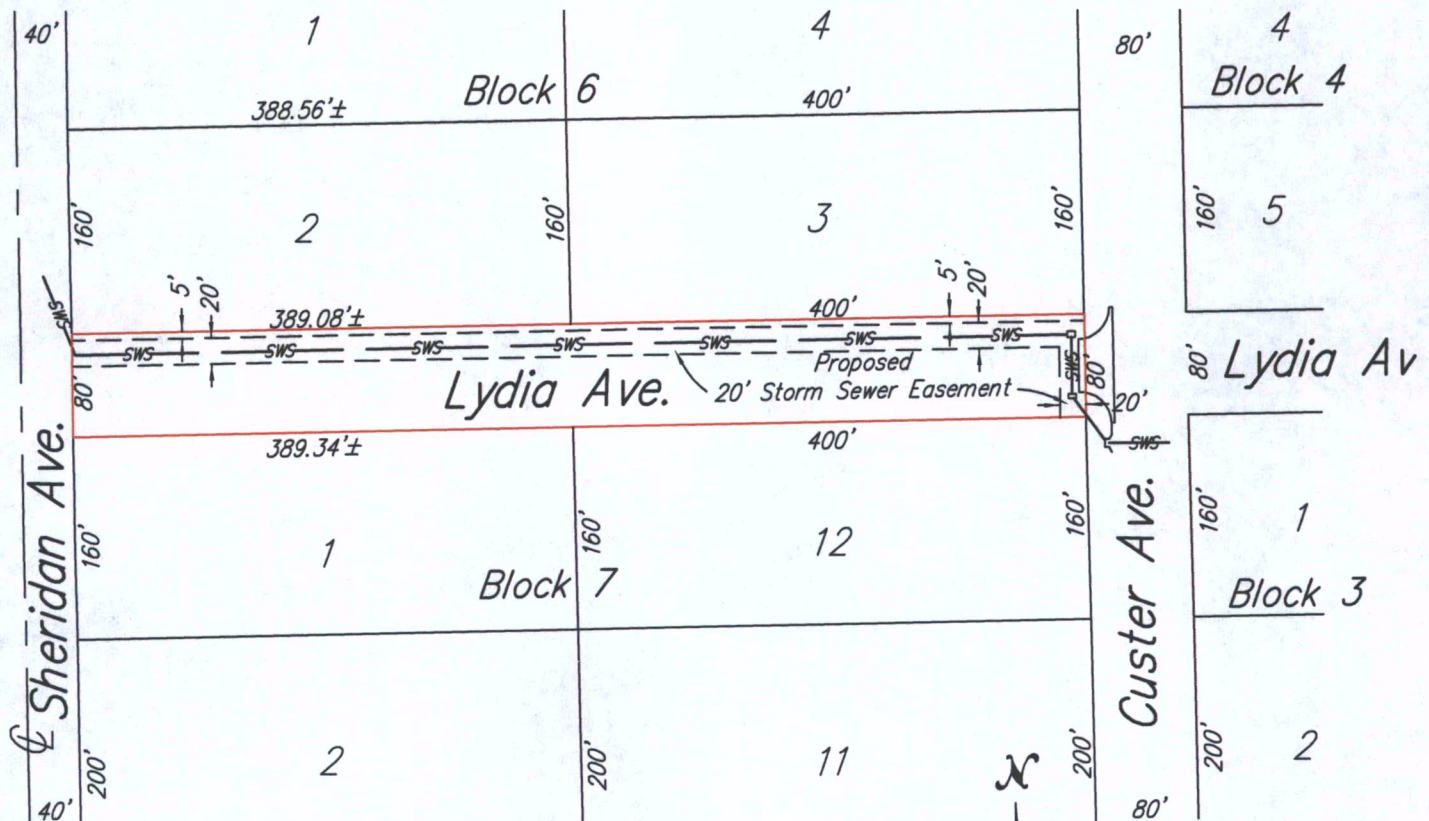
VAC2014-11

Page 1 of 1

Lydia Avenue Vacation Exhibit

Description:

All of Lydia Ave, lying south of Lots 2 and 3, Block 6 and lying north of Lots 1 and 12, Block 7, extending from the west line of Custer Ave. to the east line of Sheridan Ave., in Southwest Industrial Addition, Sedgwick County, Kansas.



March 14, 2014
PROJECT NO. 071108474 G

Mark A. Savoy

Land Surveyors

Brian N. Savoy