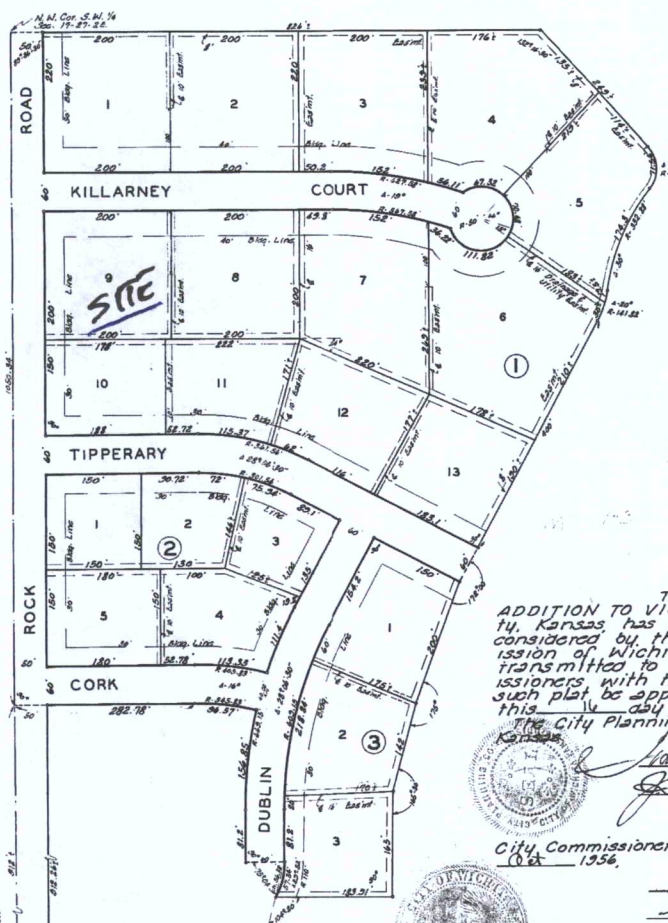


FIRST ADDITION TO VICKRIDGE SEDGWICK COUNTY, KANSAS.



State of Kansas }
Sedgwick County } s.s. This is to certify
that this plat was filed for record
in the office of the Register of Deeds
this 15th day of April 1957,
at 10 o'clock P.M.; by Clyde M.
Boughman, for the purpose
of changing the rear measurement
of lot 10 Block 1, from 188 feet
to 178 feet.
#25541
Clyde M. Boughman, Register of Deeds.

State of Kansas }
Sedgwick County } s.s. I, Clyde M. Boughman, Sur-
veyor in aforesaid county and state do hereby
certify that I have surveyed and plotted
"FIRST ADDITION TO VICKRIDGE - Sedgwick
County, Kansas, and that the accompanying
plat is a true and correct exhibit of the prop-
erty surveyed, described as follows: Beginning
at the N.W. Cor. of the S.W. 1/4 of Sec.
17, T-27-S; R-2-E; thence south along the west
line of said 1/4 Sec. 1050.34 feet; thence east at
90°, 282.78 feet; to the P.C. of a curve to the right having a central
angle of 161.00 and a radius of 345.83; thence along said curve, 36.57 feet to
the intersection of a curve having a central angle of
25° 06' 30" and a radius of 469.15 feet; thence
south along said curve 156.05 feet to P.T.; thence
south on tangent to said curve 81.2 feet; thence
east at 90°, 60 feet to the P.C. of a curve south
having a central angle of 29° 32' and a radius
of 110 feet; thence southerly along said curve
57.34 feet; described by the following deflection
angle and chord, right 10° 25' 56" 38.38 feet; thence
with an angle to the left of 104° 20', a distance
of 183.31 feet; thence north at 90°, 165 feet;
thence with an angle to the right of 14° 30',
142 feet; thence with an angle to the right of
51° 00', 200 feet; thence with an angle to the
right of 87° 00', 460 feet to the P.C. of a curve
to the left having a central angle of 20° 00'
and a radius of 141.82 feet; thence along said
curve 42.5 feet to the P.R.C. of a curve to the
right having a central angle of 30° 00' and a
radius of 332.88 feet; thence along said curve
174.3 feet to the P.R.C. of a curve to the left
having a central angle of 80° 00' and a radius
of 51.25 feet; thence along said curve 71.58
feet to point of tangency; thence on tangent
to said curve 249 feet more or less to the
north line of said 1/4 Sec.; thence west
826 feet more or less to the place of begin-
ning. Also the west 50 feet of said S.W. 1/4
except the north 1050.34 feet thereof and
except the south 164.1 feet thereof.
Clyde M. Boughman, Surveyor

This plat of "FIRST
ADDITION TO VICKRIDGE" Sedgwick County,
Kansas has been submitted to and
considered by the City Planning Comm-
ission of Wichita, Kansas and is hereby
transmitted to the Board of City Comm-
issioners with the recommendation that
such plat be approved as proposed. Dated
this 14th day of April 1956.
The City Planning Commission of Wichita,
Kansas.

[Signature] Chairman
[Signature] Secretary
Approved by the Board of
City Commissioners this 23rd day of
Oct 1956.
[Signature] City Clerk

Approved by the Board
of County Commissioners this 27th
day of April 1957.
[Signature] County Clerk

Know all men by these pres-
ents that we John S. Wertz, Helen Vickers Springer,
George Stallwitz, and M. C. Lyons, trustees of the
Vickers Testamentary Trusts, have caused
the land described in the surveyors cert-
ificate to be platted into lots, blocks, streets,
roads and lanes to be known as "FIRST
ADDITION TO VICKRIDGE" Sedgwick County,
Kansas. Easements are hereby granted as
indicated for the construction and main-
tenance of all public utilities. The streets
roads, lanes are hereby dedicated to and
for the use of the public.

Vickers Testamentary Trusts
[Signature] Trustee
[Signature] Trustee
[Signature] Trustee
[Signature] Trustee

State of Kansas }
Sedgwick County } s.s. Be it remembered that on
this 12th day of October 1956 before me
a notary public in aforesaid county and state
came John S. Wertz, Helen Vickers Springer, George Stallwitz,
and M. C. Lyons, trustees of the Vickers
Testamentary Trusts, to the known to be
the same persons who executed the fore-
going instrument of writing and duly
acknowledged the execution of the same.
In testimony whereof I have hereunto
set my hand and affixed my notarial
seal the day and year above written.


[Signature] Notary Public
My Commission Expires October 26 1966
Prot. Cal. - M395 P.163
Declaration M395 P.169
offbook # M388 P.438

PROVIDED: all streets, roads, and avenues
as dedicated are not intended as a part
of County Road District or of township
Block System or as a part of the
County easement road system established by
Board of Sedgwick County Commissioners
accepting and charging same.
State of Kansas }
Sedgwick County } s.s. This is to certify that
this plat was filed for record in the office
of the Register of Deeds this 15th day
of April 1957, at 10:30 o'clock
P.M.; and is duly recorded.
#10534
[Signature] Register of Deeds
WAVEN - RAISE LOTS 24 2 M 55P 290

Entered on Transfer
record this 15th day of April
1957.
[Signature] County Clerk

3.00 TUV 3-10 Declaration F 88 app. 6.12
Certificate Iss. 11.99 Nov. 2.12
See Dedication of Easement M400 P.61
See Release of Restrictions - M-641 P.135

VA C 2014-14



This digital plat record accurately reproduces in all details the original plat filed with the Sedgwick County Register of Deeds. Digitized under the supervision of Register of Deeds Bill Meek by Sedgwick County Geographic Information Systems.

Bill Meek, Register of Deeds
Digitized version of original signature

