

City of Wichita)
 Sedgwick County) ss
 State of Kansas)

L/S No. 2008-71
 Copy 1

LOT SPLIT

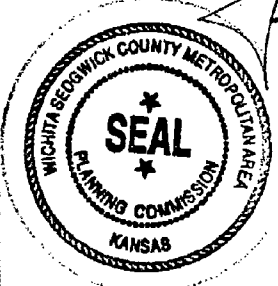
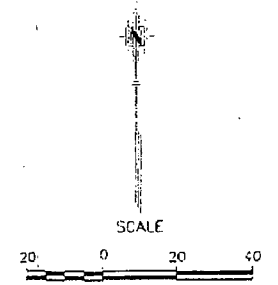
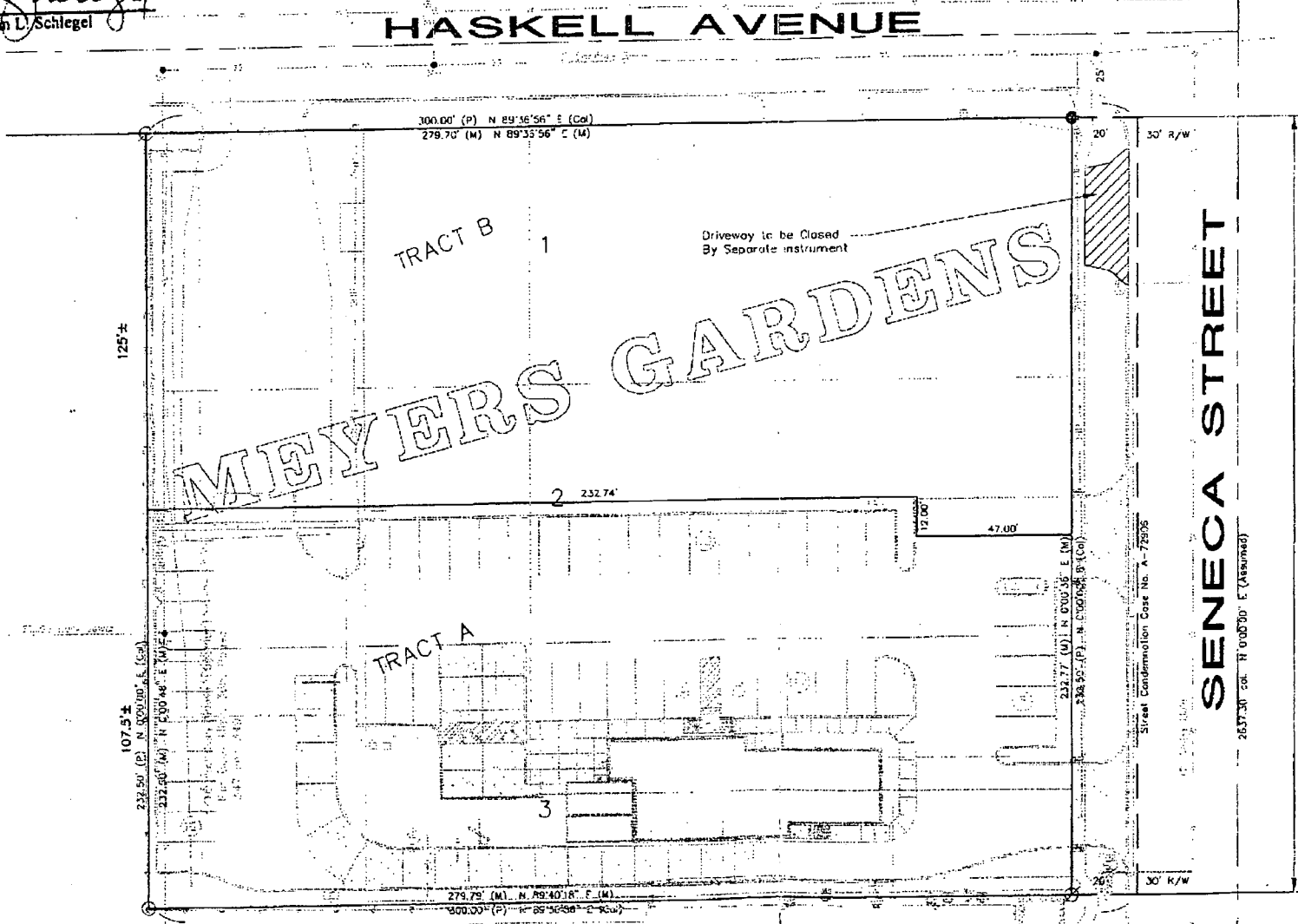
LOTS 1, 2 AND 3, MEYERS GARDENS

SEDGWICK COUNTY, KANSAS

I, John L. Schlegel, Director of Planning, Wichita-Sedgwick County Metropolitan Area Planning Department, do hereby certify under the Authority granted in the Subdivision Rules and Regulation that the lot split to which this stamp affixed has been approved.

Given under my hand and seal, this 9th day of October, 2008

John L. Schlegel
 John L. Schlegel

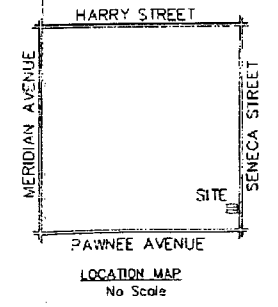
- LEGEND**
- (M) Measured distance
 - (Cal) Calculated from Measured distance
 - (P) Platted Distances
 - ⊘ 1/2" Iron Pipe (Found)
 - 5/8" Rebar (Found)
 - 3/8" Rebar w/LS 950 (Found)
 - 5/8" Rebar w/RLS 1294(5et)

LEGAL DESCRIPTION
TRACT A
 Lot 3, Meyers Gardens, Sedgwick County, Kansas; ALONG with the south 30 feet of Lot 2 in said Addition; AND ALONG WITH the north 12 feet of the south 42 feet of the west 232.74 feet of said Lot 2; EXCEPT that part condemned for street in Condemnation Case No. A-72906.

Said Tract contains 32,868 Sq. Ft. more or less.

TRACT B
 Lot 1 and Lot 2, Meyers Gardens, Sedgwick County, Kansas; EXCEPT the south 30 feet of said Lot 2; AND EXCEPT the north 12 feet of the south 42 feet of the west 232.74 feet of said Lot 2; AND EXCEPT that part condemned for street in Condemnation Case No. A-72906.

Said Tract contains 32,209 Sq. Ft. more or less.



BENCH MARKS
 1. City of Wichita Disc on the SW corner of the intersection of Seneca & Pawnee. Located on the traffic control base. Elev. = 104.76 (City of Wichita Datum)

Complete Access Control Erection Two (2) Openings

LOT SPLIT
 DE & ASSOCIATES OF KANSAS, INC.
 CONSULTING ENGINEERS
 901 E. Lansing, Suite 100, Wichita, KS 67208-1172
 Phone: 316-261-4144 Fax: 316-261-4141
 Date: 10/07/2008

LOT SPLIT
 DE & ASSOCIATES OF KANSAS, INC.
 CONSULTING ENGINEERS
 901 E. Lansing, Suite 100, Wichita, KS 67208-1172
 Phone: 316-261-4144 Fax: 316-261-4141
 Date: 10/07/2008

LOT SPLIT
 DE & ASSOCIATES OF KANSAS, INC.
 CONSULTING ENGINEERS
 901 E. Lansing, Suite 100, Wichita, KS 67208-1172
 Phone: 316-261-4144 Fax: 316-261-4141
 Date: 10/07/2008