



Wichita-Sedgwick County Metropolitan Area Planning Department

January 27, 2015

MKEC Engineering Inc
Attn Brian Lindebak
411 N. Webb Rd
Wichita, KS 67206

Ref: VAC2014-00038: City request to vacate platted easements on property generally located on the northeast corner of 21st Street North and Ridge Road.

Dear Mr. Lindebak:

At its regular meeting on Tuesday, January 27, 2015, the Wichita City Council considered the above-referenced request. The action of the City Council was to APPROVE subject to the recommendation by the MAPC.

If you have any questions about this matter, please call 268-4421.

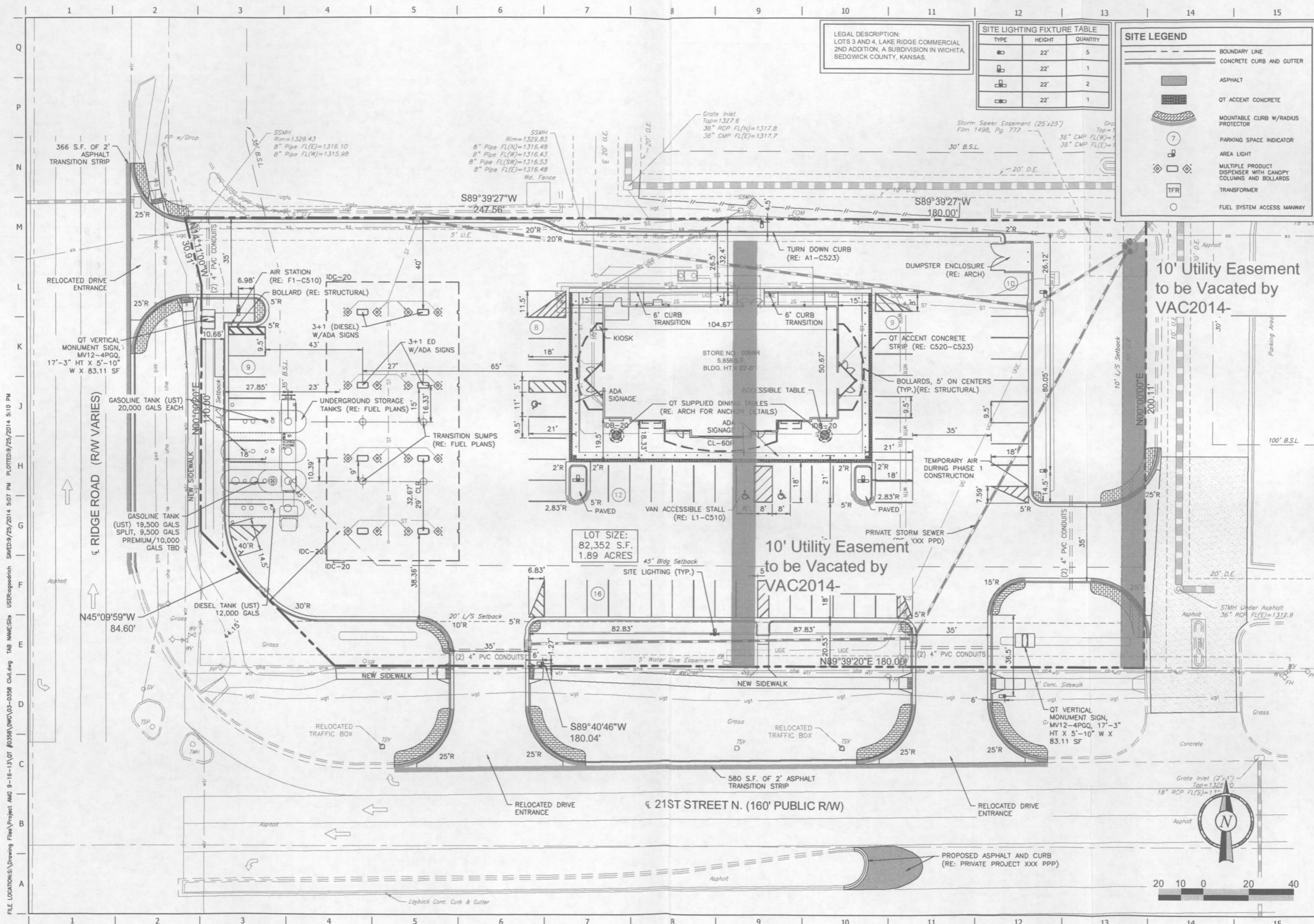
Sincerely,

A handwritten signature in black ink, appearing to read 'Bill Lonsnecker', written over the typed name.

Bill Lonsnecker
Senior Planner

BL:klw

cc: QuikTrip West Incorporated, Truitt Priddy, 1120 N Industrial Blvd, Euless TX 76039
Emprise Bank, Patrick Belt, PO Box 2970, Wichita KS 67201
Quik Trip West Inc, 4705 S 129th East Ave, Tulsa OK 74134



FILE LOCATIONS: \\Drawing Files\Project AMG 9-18-13\13\01 #0358\DWG\C3-0358 Civil.dwg TAB NAME: SHE USER: gpedrich SAVED: 9/25/2014 5:07 PM PLOTTED: 9/25/2014 5:10 PM

PROJECT NO.: 20142173

CED
 CERTIFIED ENGINEERING DESIGN, P.A.

1935 W. MAPLE STREET
 WICHITA, KANSAS 67213
 PH (316)262-8808
 FAX (316)262-1699

QuikTrip No. 0358R
 7120 WEST 21ST STREET NORTH
 WICHITA, KS

QT

© COPYRIGHT QUikTRIP CORPORATION 2011
 ANY UNAUTHORIZED USE, REPRODUCTION,
 PUBLICATION, DISTRIBUTION, OR SALE IN
 WHOLE OR IN PART, IS STRICTLY PROHIBITED.

PROTOTYPE: P-80 (08/01/14)
 DIVISION:
 VERSION: 001
 DESIGNED BY:
 DRAWN BY:
 REVIEWED BY:

REV	DATE	DESCRIPTION

SHEET TITLE:
SITE PLAN

SHEET NUMBER:
C100

