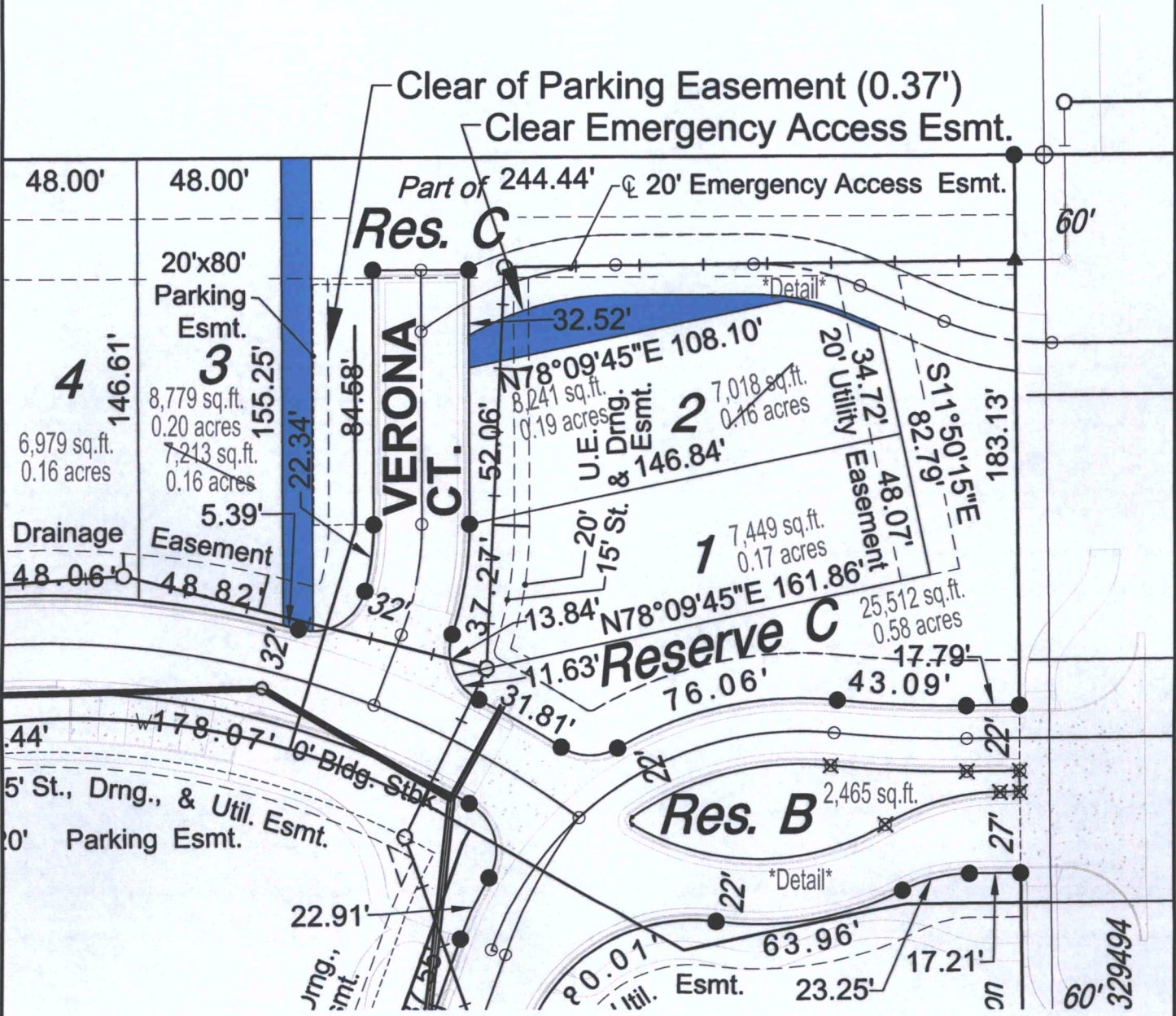
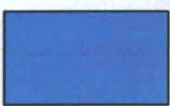


EXHIBIT "A"



NORTH
 1"=50' / 1 : 600



VAC2014-42
 = Vacation of Reserve C.



Wichita, KS • 316.684.9600



Wichita-Sedgwick County Metropolitan Area Planning Department

January 27, 2015

MKEC Engineering, Inc.
Attn: Brian Lindebak
411 N. Webb Rd
Wichita, KS 67206

Ref: VAC2014-00042 - City request to vacate a platted reserve and to vacate the plattor's text on property generally located south of Maple Street, on the west side of 135th Street West, north of Verona Street and Verona Court.

Dear Mr. Lindebak:

At its regular meeting on Tuesday, January 27, 2015, the Wichita City Council considered the above-referenced request. The action of the City Council was to APPROVE subject to the recommendation by the MAPC.

If you have any questions about this matter, please call 268-4421.

Sincerely,

Bill Longnecker
Senior Planner

BL:klw

cc: Perfection Signature Properties LLC, Jason Ronk, 11828 W Central Suite 124, Wichita KS 67212