



Wichita-Sedgwick County Metropolitan Area Planning Department

January 27, 2015

MKEC Engineering, Inc.
Attn: Brian Lindebak
411 N. Webb Rd
Wichita, KS 67206

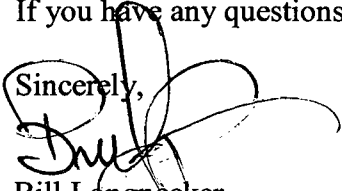
Ref: VAC2014-00043 - City request to vacate a platted utility easement, vacate a platted reserve and to vacate the plattor's text on property generally located south of Maple Street, on the west side of 135th Street West, north of Montecito Lane, on the west side of Siena Lane.

Dear Mr. Lindebak:

At its regular meeting on Tuesday, January 27, 2015, the Wichita City Council considered the above-referenced request. The action of the City Council was to APPROVE subject to the recommendation by the MAPC.

If you have any questions about this matter, please call 268-4421.

Sincerely,



Bill Longnecker
Senior Planner

BL:klw

cc: Perfection Signature Properties LLC, Jason Ronk, 11828 W Central Suite 124, Wichita KS 67212

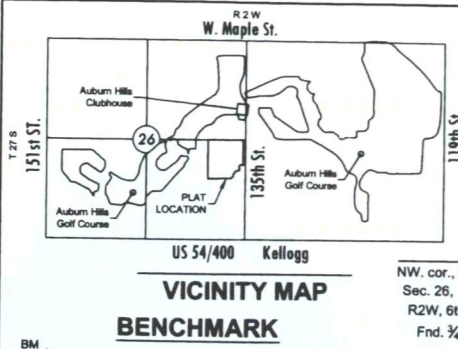
VAC 2014-43

PC 241-10A

COURTYARDS AT AUBURN HILLS

AN ADDITION TO WICHITA, SEDGWICK COUNTY, KANSAS

FINAL PLAT



VICINITY MAP
BENCHMARK

US 54/400 Kellogg
NW. cor., SE. 1/4, Sec. 26, T27S, R2W, 6th P.M.
Fnd. 1/2" Pipe

MINIMUM PAD ELEVATIONS
LOWEST OPENINGS

LOT	BLOCK	ELEVATION NAVD88
35	1	1349.7
36	1	1350.2
37	1	1348.7
38	1	1348.1
39	1	1347.6
40	1	1347.6
41	1	1347.2
42	1	1346.8
43	1	1346.3
44	1	1346.0
45	1	1346.0
46	1	1353.4

Scale: 1" = 60' / 1:720
Basis of Bearing: Kansas coordinate system of 1983 south zone grid bearing of S00°37'32"E on the east line of the SE 1/4, Sec. 26, T27S, R2W, 6th P.M.
This plat is surveyed and platted on NAD83 using Kansas state plane south zone coordinates, modified to the surface, having a combined adjustment scale factor of 1.000120014401728

LINE TABLE

LINE	LENGTH	BEARING
L1	77.79	N89°22'28"E
L2	104.55	S83°44'51"W
L3	101.92	N84°32'01"W
L4	76.42	S07°03'47"E
L5	44.86	S10°29'25"W
L6	29.65	S06°02'29"W
L7	165.88	N87°21'41"E
L8	163.37	N24°00'32"E
L9	61.82	N41°30'34"E
L10	37.55	N19°24'20"E
L11	5.00	N70°35'40"W
L12	24.99	N21°15'20"E

LINE TABLE

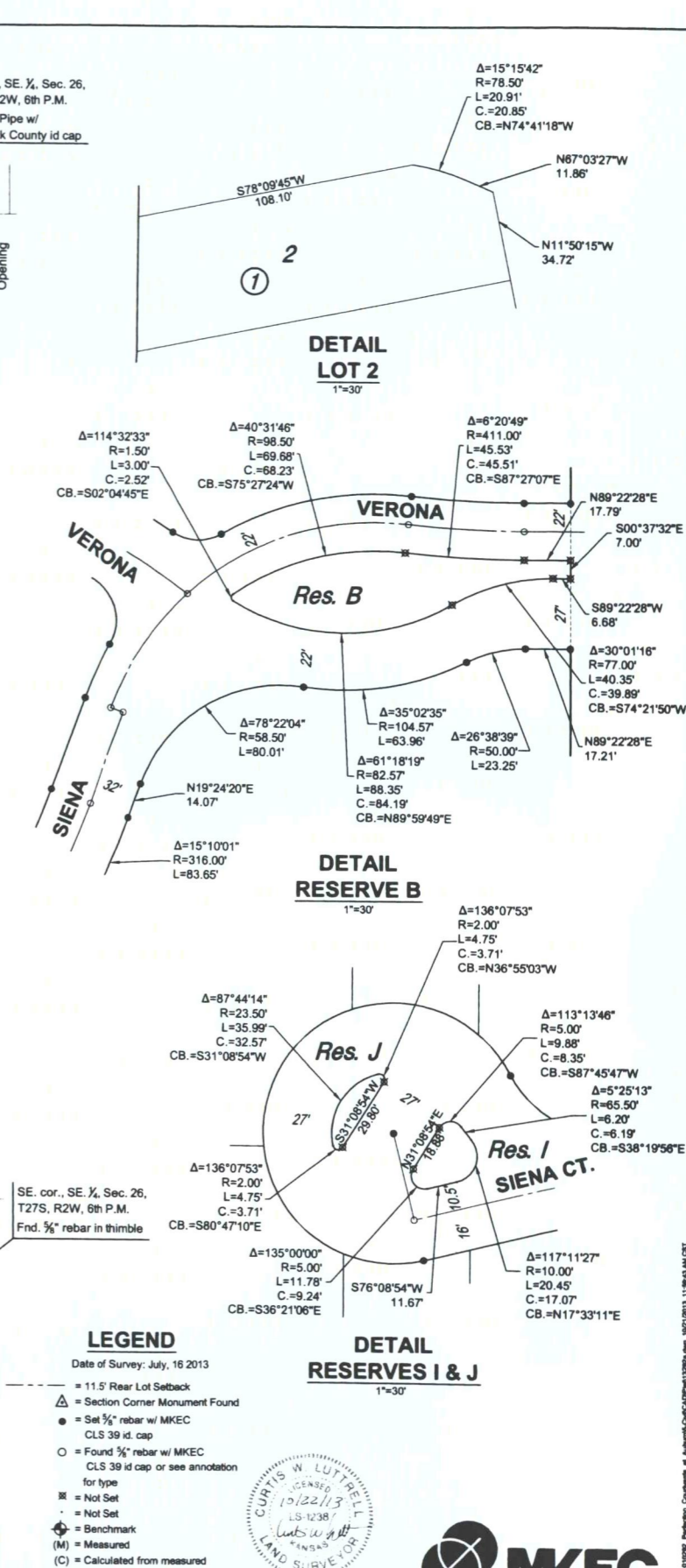
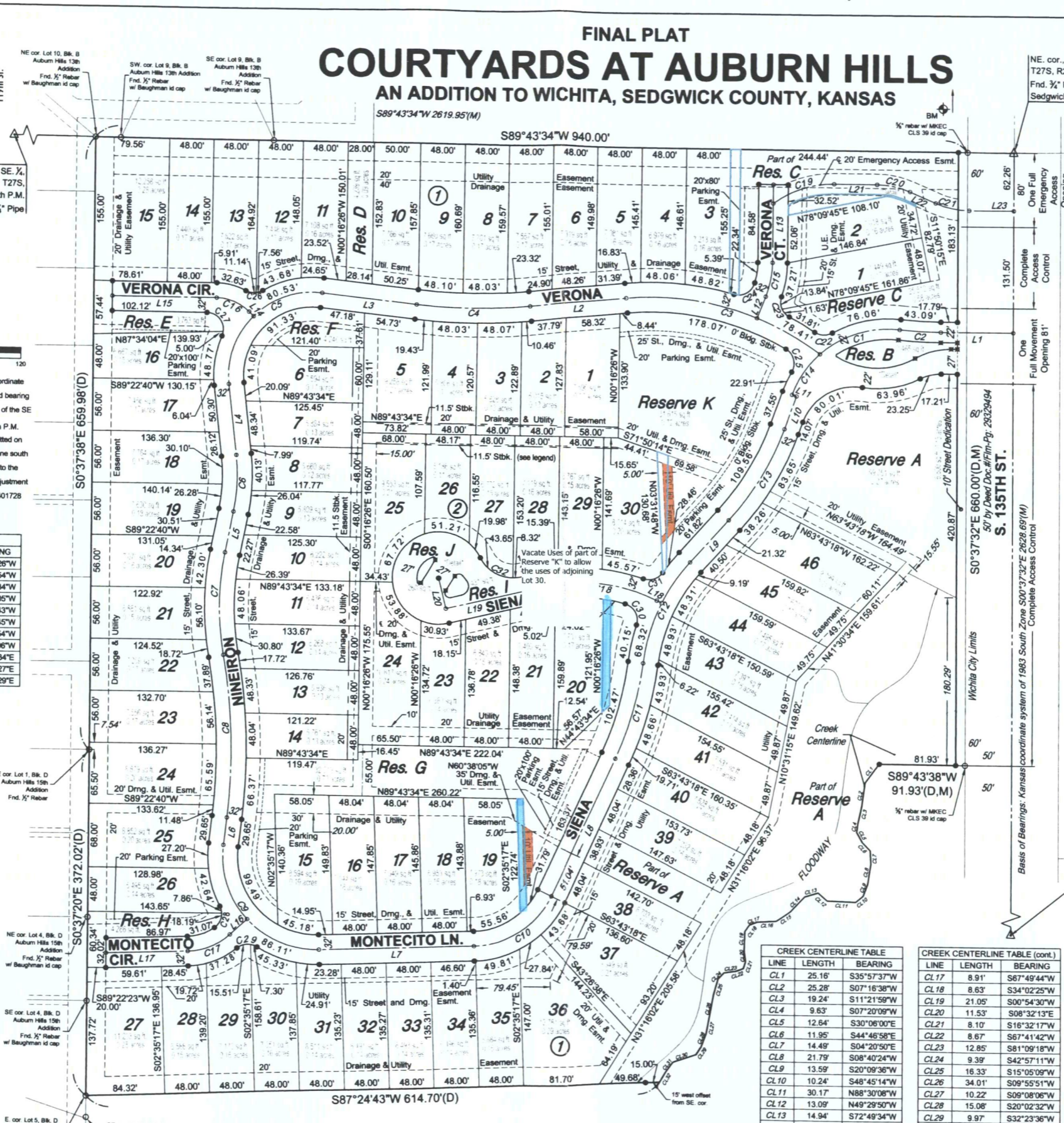
LINE	LENGTH	BEARING
L13	84.58	N00°16'26"W
L14	6.78	N45°47'54"W
L15	112.41	S89°43'34"W
L16	24.67	S48°42'05"W
L17	87.52	S87°24'43"W
L18	5.82	N63°59'45"W
L19	111.87	S76°08'54"W
L20	34.00	N13°51'06"W
L21	45.90	N89°43'34"E
L22	30.39	S67°03'27"E
L23	47.96	N89°22'29"E

CENTERLINE CURVE TABLE

CURVE	LENGTH	RADIUS	CHORD	BEARING	DELTA
C1	92.13	109.50	89.43	S71°37'08"W	48°12'19"
C2	44.31	400.00	44.29	S87°27'08"E	6°20'49"
C3	222.44	300.00	217.36	N75°00'40"W	42°28'58"
C4	122.72	600.00	122.51	N89°36'25"E	11°43'08"
C5	161.05	90.00	140.41	S44°12'06"W	102°31'46"
C6	61.27	200.00	61.03	N01°42'49"E	17°33'12"
C7	111.18	300.00	110.55	S00°07'37"E	21°14'04"
C8	175.78	600.00	175.15	N02°21'05"W	16°47'08"
C9	172.23	100.00	151.72	S43°17'55"E	98°40'48"
C10	105.04	95.00	106.96	N15°13'12"E	17°34'40"
C11	107.38	350.00	106.96	N15°13'12"E	17°34'40"
C12	122.45	200.00	120.54	S23°58'13"W	35°04'42"
C13	115.74	300.00	115.02	N30°27'27"E	22°06'14"
C14	53.72	109.50	53.19	S33°27'39"W	28°06'39"
C15	37.58	100.00	37.36	N10°29'27"E	21°31'46"
C16	38.81	50.00	37.84	N68°02'10"W	44°28'31"
C17	49.74	70.00	48.70	N67°03'24"E	40°42'38"
C18	121.73	175.00	119.29	N83°55'26"W	39°51'21"
C19	69.91	108.17	68.70	S71°12'36"W	37°01'58"
C20	36.47	90.00	36.22	N78°39'56"W	23°12'58"
C21	37.02	90.00	36.76	S78°50'29"E	23°34'04"

LOT/RESERVE CURVE TABLE

LOT/RESERVE	LENGTH	RADIUS	CHORD	BEARING	DELTA
C22	19.88	18.00	18.88	S88°48'19"E	63°16'31"
C23	25.47	18.00	23.40	S22°24'04"E	81°04'13"
C24	28.39	18.00	25.54	N80°09'11"E	90°22'57"
C25	28.47	18.00	25.59	N15°00'49"W	90°37'36"
C26	18.70	18.00	17.87	N88°17'26"E	59°31'24"
C27	35.45	18.00	29.99	N33°51'18"W	112°50'14"
C28	26.05	18.00	23.83	N12°59'52"E	82°54'18"
C29	22.81	18.00	21.32	S85°44'54"W	72°36'51"
C30	28.72	18.00	25.77	N28°38'10"W	91°25'59"
C31	23.54	18.00	21.90	N71°25'06"E	74°55'06"
C32	51.97	39.00	48.21	S65°40'32"E	76°21'07"



CREEK CENTERLINE TABLE

LINE	LENGTH	BEARING
CL1	25.16	S35°57'37"W
CL2	25.28	S07°16'38"W
CL3	19.24	S11°21'59"W
CL4	9.63	S07°20'09"W
CL5	12.64	S30°06'00"W
CL6	11.95	S44°46'58"E
CL7	14.49	S04°20'50"E
CL8	21.79	S08°40'24"W
CL9	13.59	S20°09'36"W
CL10	10.24	S48°45'14"W
CL11	30.17	N88°30'08"W
CL12	13.09	N49°29'50"W
CL13	14.94	S72°49'34"W
CL14	22.53	S42°40'35"W
CL15	18.56	S54°21'18"W
CL16	20.36	S85°52'57"W

CREEK CENTERLINE TABLE (cont.)

LINE	LENGTH	BEARING
CL17	8.91	S87°49'44"W
CL18	8.63	S34°02'25"W
CL19	21.05	S00°54'30"W
CL20	11.53	S07°32'13"E
CL21	8.10	S16°32'17"W
CL22	8.67	S67°41'42"W
CL23	12.85	S81°09'18"W
CL24	9.39	S42°57'11"W
CL25	16.33	S15°05'09"W
CL26	34.01	S09°55'51"W
CL27	10.22	S09°08'06"W
CL28	15.08	S20°02'32"W
CL29	9.97	S32°23'36"W
CL30	26.27	S70°30'54"W
CL31	13.84	S35°23'47"W
CL32	12.20	S28°53'16"W

LEGEND
Date of Survey: July, 16 2013
△ = 11.5' Rear Lot Setback
● = Section Corner Monument Found
○ = Set 1/2" rebar w/ MKEC CLS 39 id cap
○ = Found 1/2" rebar w/ MKEC CLS 39 id cap or see annotation for type
⊗ = Not Set
⊙ = Not Set
⊕ = Benchmark
(M) = Measured
(C) = Calculated from measured
(D) = Described
(CD) = Calculated from Described
(P) = Platted



PC 241-10A