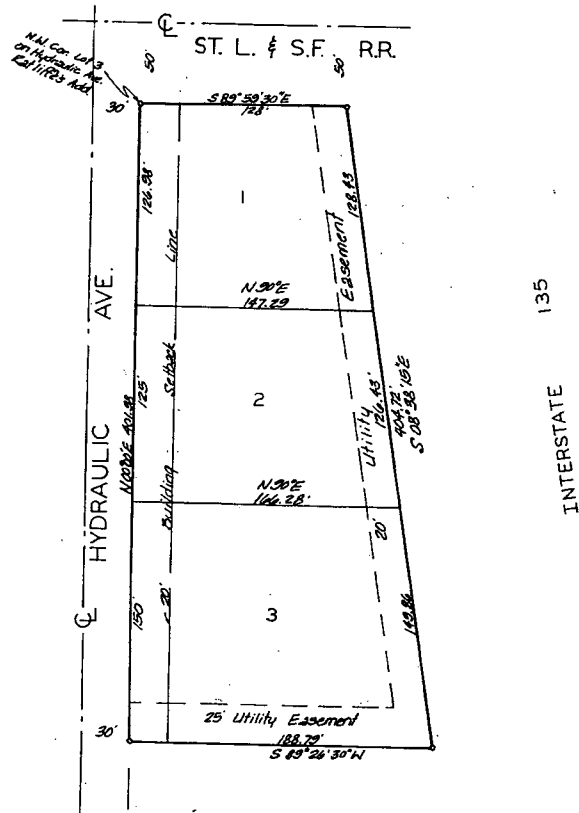


MC GINTY ADDITION VAC 2015-11

WICHITA, KANSAS

S-2 4-30



State of Kansas }
 Sedwick County } S.S. We, Baughman Company, P.A., Surveyors in aforesaid county and state do hereby certify that we have surveyed and platted "MCGINTY ADDITION," Wichita, Kansas and that the accompanying plat is a true and correct exhibit of the property surveyed, described as and being a replat of part of Lots 3, 4, 5, 6, 7, 8, 9, 10, 11, and 12, on Hydraulic Avenue, and all of Lots 13, 14, 15, 16, 17, and 18, and part of Lots 19, and 20, on Elm Street, in Ratliff's Addition to Wichita, Sedwick County, Kansas, and that thereto on the south, more particularly described as follows: Beginning at a point on the east line of Hydraulic Avenue and at the N.W. corner of said Lot 3; thence east along the north line of said Lot 3, 128 feet; thence southeasterly to a point on the south line of said Lot 20, said point being 15 feet west of the S.E. corner of said Lot 20; thence continuing along the last described line extended to the centerline of Vacated Elm St.; thence west along said centerline, 188.79 feet to the intersection of the extended east line of Hydraulic Avenue; thence north along said extended east line of Hydraulic Avenue and continuing along the east line of Hydraulic Avenue to the place of beginning. The street being vacated by virtue of K.S.A. 1970 Supp. 12-512 (b). Being situated in the S.W.1/4 of Sec. 15, Twp. 27S, R-1E.

4/27/83

Date



Baughman Company, P.A.

William L. Kober
 William L. Kober Surveyor

This plat of "MCGINTY ADDITION," Wichita, Kansas, has been submitted to and approved by the Wichita-Sedwick County Metropolitan Area Planning Commission, Wichita, Kansas. Dated this 28th day of January, 1983.

Wichita-Sedwick County Metropolitan Area Planning Commission



James C. Gardner Chairman
Robert A. Lakin Secretary

This plat approved and all dedications shown hereon accepted by the Board of Commissioners of the City of Wichita, Kansas, this 26th day of July, 1983.

Know all men by these presents that we the undersigned, have caused the land described in the surveyors certificate to be platted into lots to be known as "MCGINTY ADDITION," Wichita, Kansas. The easements are hereby granted as indicated for the construction and maintenance of all public utilities.

Leonard E. McGinty
 Leonard E. McGinty
Betty McGinty
 Betty McGinty
 United Machine Company, Inc.
Leonard E. McGinty President

646759