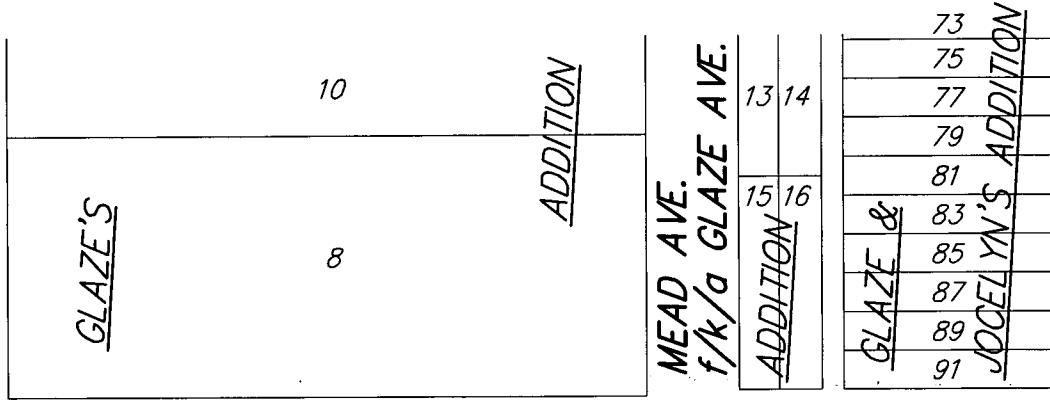


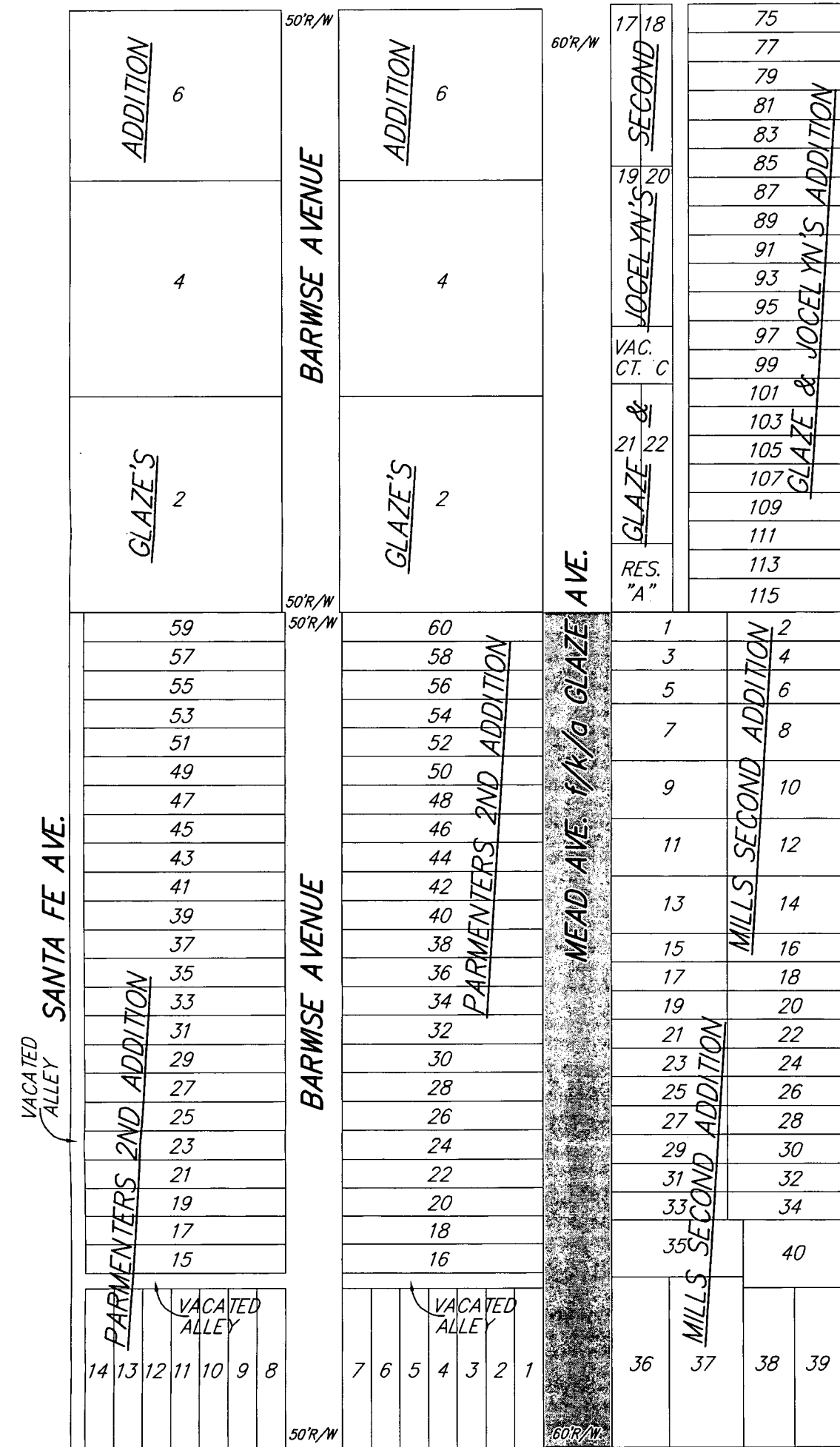
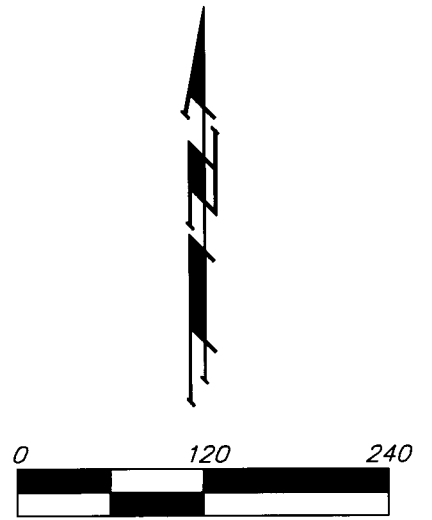
# EXHIBIT

## PART OF MEAD AVE. AS DEDICATED IN GLAZE'S ADDITION

-VAC2015-14



15TH STREET NORTH



INDICATES AREA OF  
LEGAL DESCRIPTION

13TH STREET NORTH

23 MAR 2015

Baughman Company, P.A.  
315 Ellis St. Wichita, KS 67211 P 316-262-7271 F 316-262-0149  
Baughman ENGINEERING | SURVEYING | PLANNING | LANDSCAPE ARCHITECTURE