

58-2613, and amendments thereto.

THEREAFTER, the Board, being duly advised in the premises, finds and determines that no private rights will be injured or endangered by such vacation; that the public will suffer no loss or inconvenience thereby; that no written objections hereto have been filed with the Sedgwick County Clerk; and that, in justice to the petitioner, the petition's prayer should be granted.

The Board further finds that the Metropolitan Area Planning Commission held a public hearing on the 9th day of July 2015, and recommended that the vacation petition herein be approved. The Board also finds that because the site is located in Sedgwick County, but within the City of Derby's Subdivision Jurisdiction, that therefore consideration and recommendation by the Derby Planning Commission and the Derby City Council is required. Both the Derby Planning Commission at their July 21, 2015, meeting and the Derby City Council at their August 11, 2015, meeting approved the vacation request.


THEREFORE, IT IS ORDERED BY THE BOARD OF COUNTY COMMISSIONERS OF SEDGWICK COUNTY, KANSAS, that the plat, hereinabove described be the same and is hereby vacated. It is further ordered that County Clerk shall send this Vacation Order to the Register of Deeds of Sedgwick County.

Commissioners present and voting were:

DAVID M. UNRUH	<u>AYE</u>
TIM R. NORTON	<u>ABSENT</u>
KARL PETERJOHN	<u>AYE</u>
RICHARD RANZAU	<u>AYE</u>
JAMES M. HOWELL	<u>AYE</u>

Dated this 11th day of September, 2015.

ATTEST:



KELLY B. ARNOLD, County Clerk



BOARD OF COUNTY COMMISSIONERS
OF SEDGWICK COUNTY, KANSAS



RICHARD RANZAU, Chairman
Commissioner, Fourth District

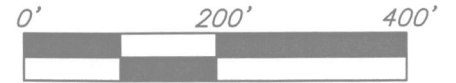
APPROVED AS TO FORM:

Robert W. Parnacott

ROBERT W. PARNACOTT,
Assistant County Counselor

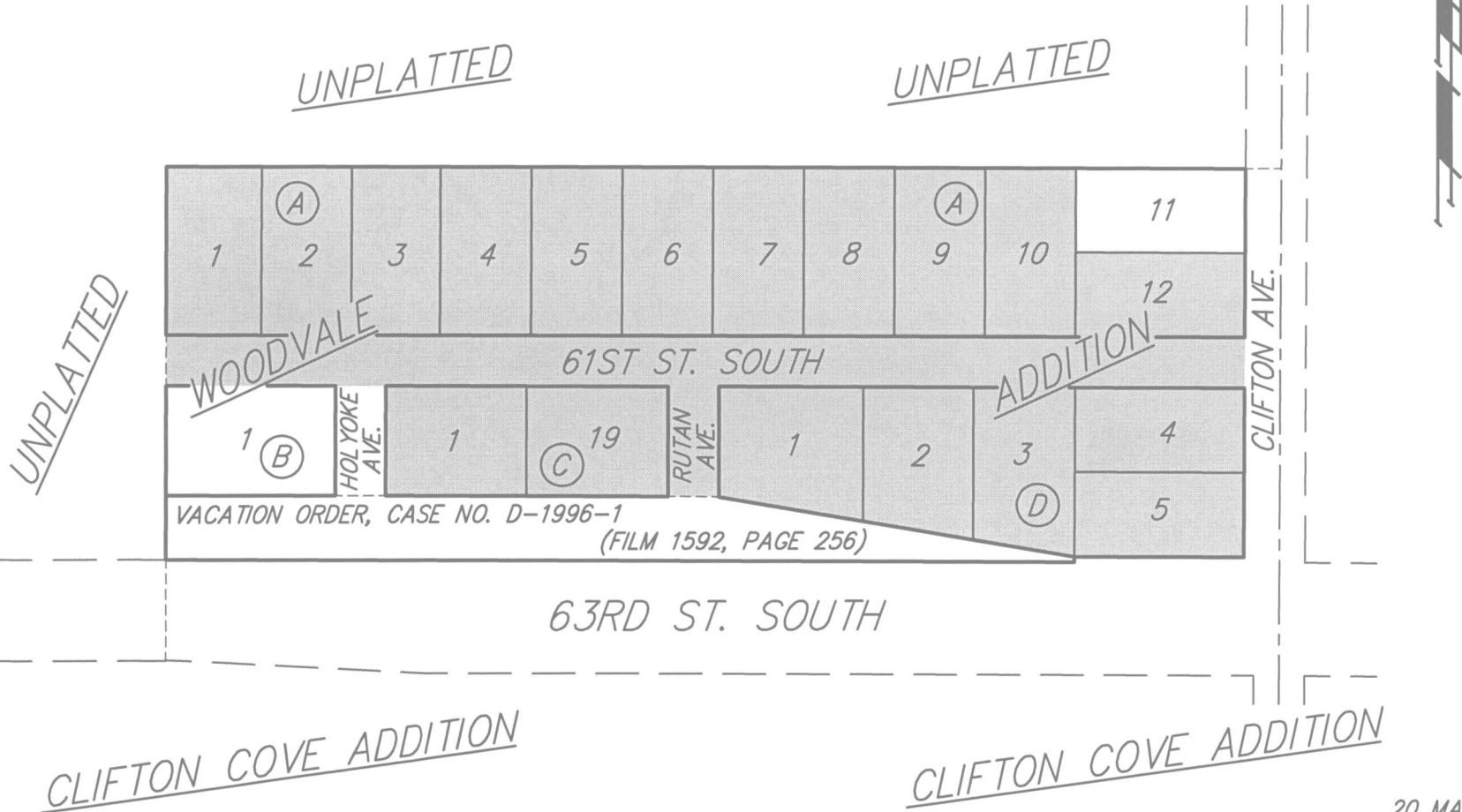
EXHIBIT "A"

PART OF WOODVALE ADDITION
SEDGWICK COUNTY, KANSAS



VAC 2015-23

 INDICATES AREA OF
LEGAL DESCRIPTION
FOR VACATION



20 MAY 2015

 **Baughman** Company, P.A.
315 Ellis St. Wichita, KS 67211 P 316-262-7271 F 316-262-0149
ENGINEERING | SURVEYING | PLANNING | LANDSCAPE ARCHITECTURE