



Wichita-Sedgwick County Metropolitan Area Planning Department

September 8, 2015

K.E. Miller Engineering P.A.
Attn: Kirk Miller
117 E Lewis
Wichita, KS, 67202

Ref: VAC2015-00029 - City request to vacate a drainage easement dedicated by separate instrument on property generally located on Hoover Court, west of Hoover Avenue (1831 S. Hoover Ct.).

Dear Mr. Miller:

At its regular meeting on Tuesday, September 8, 2015, the Wichita City Council considered the above-referenced request. The action of the City Council was to **APPROVE** subject to the recommendation by the MAPC.

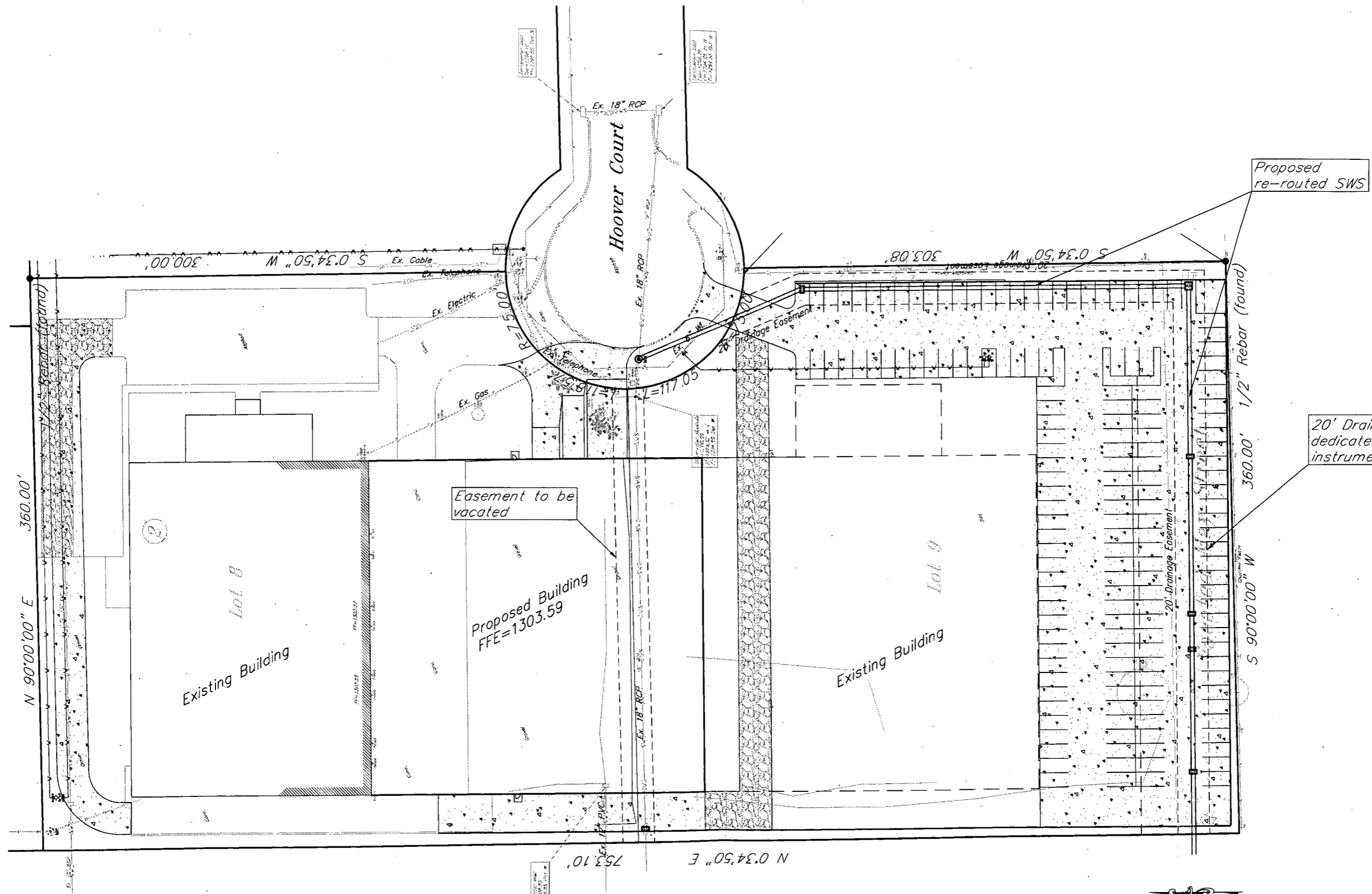
If you have any questions about this matter, please call 268-4421.

Sincerely,


Bill Longnecker
Senior Planner

BL:klw

cc: Conrail Development LLC, 1831 S Hoover Ct, Wichita KS 67209



Proposed re-routed SWS

20' Drainage Easement dedicated by separate instrument

Easement to be vacated

Proposed Building
FFE=1303.59

Benchmark
City of Wichita disc on the West end of the RCB under Hoover Street and approximately 100 feet North of Harry Street on the North end of the headwall.
Elevation = 1302.06 NAVD 88

Disc on top of curb on North side of Hoover Court Cul-de-sac approximately 4 feet south and 6 feet east of fire hydrant.
Elevation = 1298.81 NAVD 88

