



Wichita-Sedgwick County Metropolitan Area Planning Department

February 17, 2016

Baughman Company, P.A.
c/o Phil Meyer
315 Ellis
Wichita, KS, 67211

Ref: VAC2015-00031 - Request to vacate portions of a platted floodway easements and minimum pad elevations on property generally located west of 127th Street East on the south side of 37th Street North (County District 1).

Dear Mr. Meyer:

At its regular meeting on Wednesday, October 14, 2015, the Board of County Commission considered the above-mentioned request. The action of the Board of County Commissioners was to **APPROVE** subject to the recommendation by the MAPC.

If you have any questions about this matter, please call 268-4494.

Sincerely,

A handwritten signature in black ink, appearing to read 'Bill Longnecker', written over a large, stylized flourish.

Bill Longnecker
Senior Planner

BL:klw

cc: Kahmann Construction, David Kahmann, 260 N Main, Bldg 300 A, Haysville KS 67060
Jon C & Andrea C Parks, 12101 E 37th St N, Wichita KS 67226

BEFORE THE COUNTY COMMISSIONERS
OF SEDGWICK COUNTY, KANSAS

IN THE MATTER OF VACATION OF PORTIONS)
OF PLATTED FLOODWAY EASEMENTS AND)
THE MINIMUM PAD ELEVATIONS)

GENERALLY LOCATED WEST OF 127TH STREET)
EAST ON THE SOUTH SIDE OF 37TH STREET)
NORTH)

CASE NO. VAC2015-00031)
)
)
)
)

VACATION ORDER

NOW on this 14th day of October, 2015, at 9:00 o'clock A.M., comes the petition filed by Jon C. & Andrea C. Parks (owners), praying for the vacation of the following-described portions of platted floodway easements and the minimum pad elevations, to-wit:

That part of the Floodway Easement lying within Lot 1 as granted in Four Oaks Addition, Sedgwick County, Kansas described as follows: Commencing at the northwest corner of said Lot 1, (the northwest corner of said Lot 1 also being the northwest corner of that part of said Floodway Easement lying within said Lot 1); thence S00°18'09"E, (platted basis of bearings), along the west line of said Lot 1, (and along a segment of the west line of that part of said Floodway Easement lying within said Lot 1), 68.31 feet to a deflection corner in the west line of said Floodway Easement; thence S62°36'04"E along a segment of the west line of said Floodway Easement, 344.44 feet for a point of beginning; thence continuing S62°36'04"E along said segment of the

elevations as shown on the effective Federal Emergency Management Agency Flood Insurance Rate Map, or best information available, with a minimum 2 foot freeboard requirement. The minimum pad elevation shall be determined by the officially designated floodplain manager for the governing body with jurisdiction at the time building permits are requested on said lot.

WHEREUPON, it is shown that proper notice has been given by publication once at least 20 days prior to the date of hearing in the official county newspaper, the Wichita Eagle, such publication having occurred on July 30, 2015; and it is further shown that proper proof of such publication has been filed herein. The Board finds that such notice is in lawful form and that it conforms to K.S.A. 58-2613, and amendments thereto.

THEREAFTER, the Board, being duly advised in the premises, finds and determines that no private rights will be injured or endangered by such vacation; that the public will suffer no loss or inconvenience thereby; that no written objections hereto have been filed with the Sedgwick County Clerk; and that, in justice to the petitioner, the petition's prayer should be granted.

The Board further finds that the Metropolitan Area Planning Commission held a public hearing on the 20th day of August 2015, and recommended that the vacation petition herein be approved.

THEREFORE, IT IS ORDERED BY THE BOARD OF COUNTY COMMISSIONERS OF SEDGWICK COUNTY, KANSAS, that the portions of the platted floodway easements and the minimum pad elevations, hereinabove described be the same and are hereby vacated. It is further ordered that County Clerk shall send this Vacation Order to the Register of Deeds of Sedgwick County.


Commissioners present and voting were:

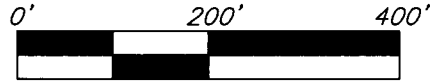
DAVID M. UNRUH	_____
TIM R. NORTON	_____
KARL PETERJOHN	_____
RICHARD RANZAU	_____
JAMES M. HOWELL	_____

EXHIBIT "A"

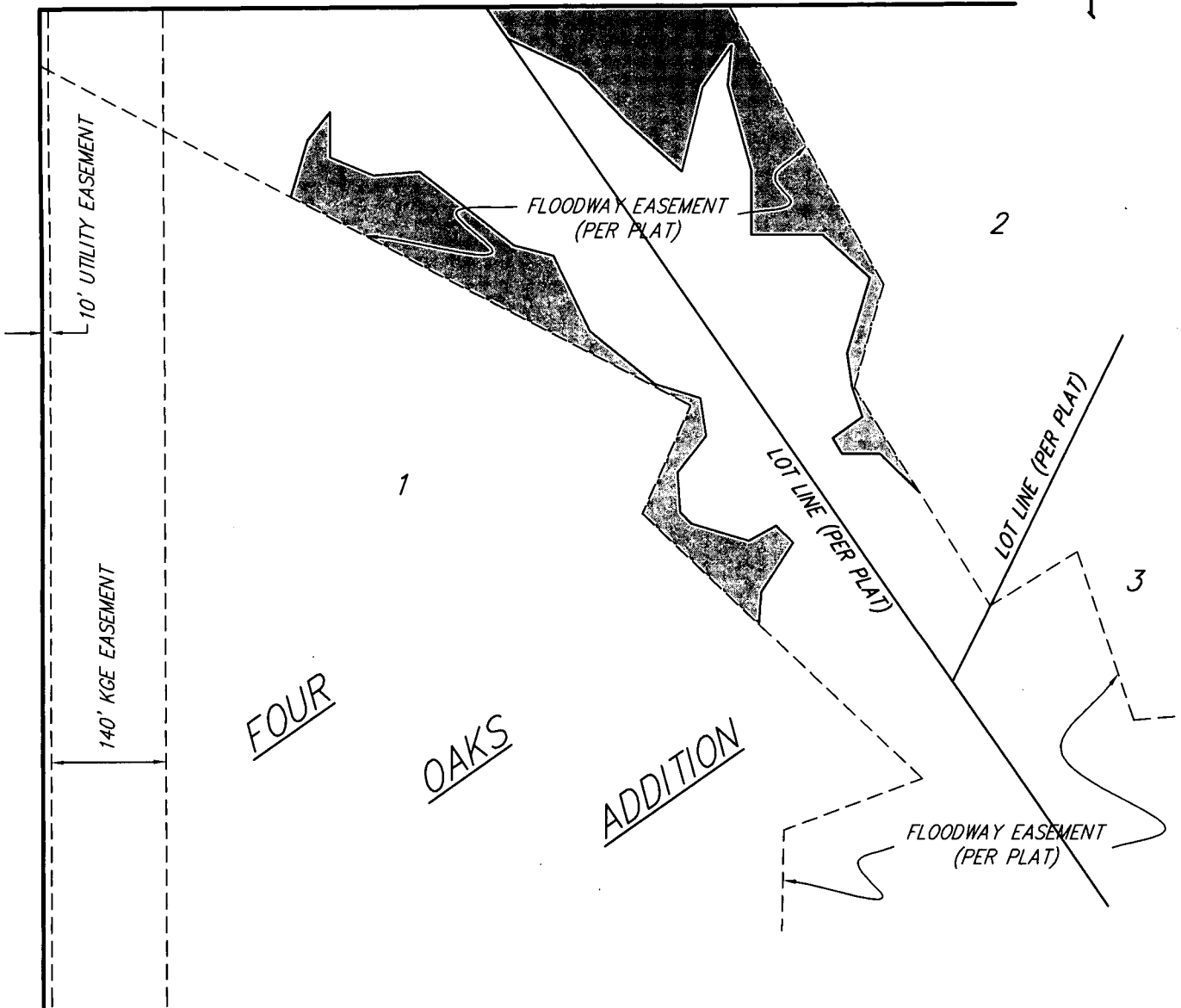
PARTIAL FLOODWAY EASEMENT VACATION LOTS 1 AND 2, FOUR OAKS ADDITION, SEDGWICK COUNTY, KANSAS

VAC2015-31

 Area of Existing
Floodway Easement
to be Vacated



37th STREET NORTH



13 JULY 2015

 Baughman Company, P.A.
315 Ellis St. Wichita, KS 67211 P 316-262-7271 F 316-262-0149
Baughman ENGINEERING | SURVEYING | PLANNING | LANDSCAPE ARCHITECTURE