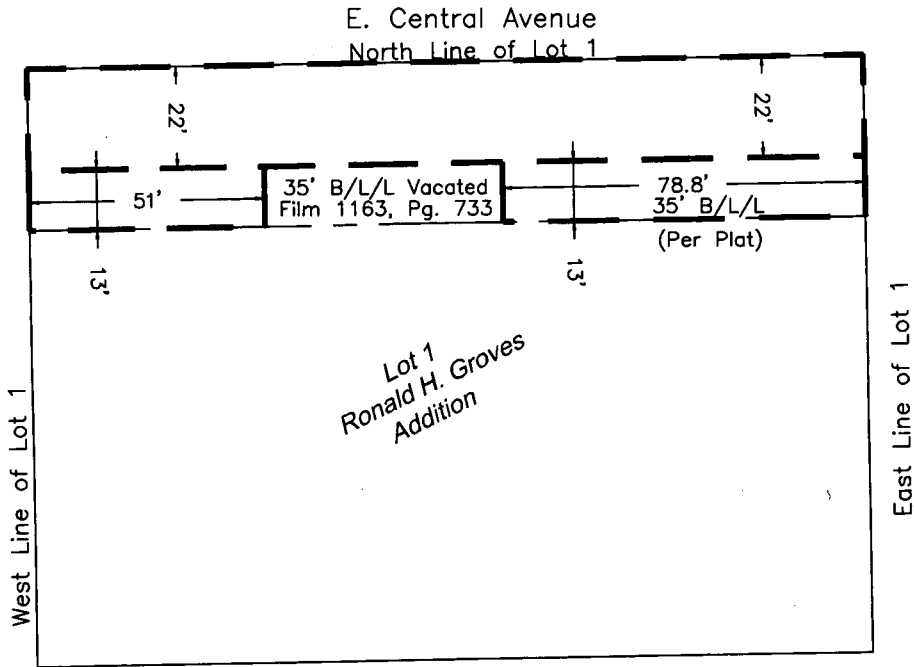


EXHIBIT "A"



Basis of Bearing  
Subdivision Plat

SCALE: 1" = 40'



The South 13 feet of the North 35 feet of the West 51 feet of Lot 1, RONALD H. GROVES Addition to Wichita, Sedgwick County, Kansas.

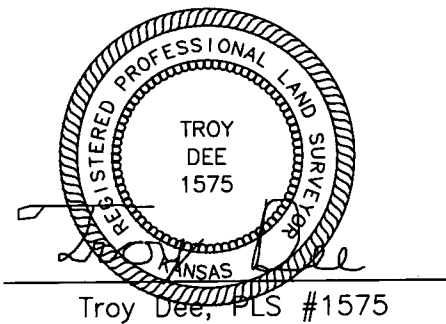
AND

The South 13 feet of the North 35 feet of the East 78.8 feet of Lot 1, RONALD H. GROVES Addition to Wichita, Sedgwick County, Kansas.

AND

The North 22 feet of Lot 1, RONALD H. GROVES Addition to Wichita, Sedgwick County, Kansas.

USC2016-23



**Troy Dee, P.L.S.**

23255 N. Briarwood Drive, Edmond, Oklahoma 73025  
Telephone: (405) 802-7883  
P.L.S. #1745  
troy1745@gmail.com