



Wichita-Sedgwick County Metropolitan Area Planning Department

February 13, 2017

MKEC Engineering Inc.
c/o Brian Lindebak
411 N. Webb Rd
Wichita, KS 67206

Ref: VAC2016-00038 - Request to vacate the platting text to amend the uses allowed in a platted reserve on property generally located north of East Central Avenue on the east side of North 127th Street East. (City of Wichita's Three-Mile Subdivision Jurisdiction).

Dear Mr. Lindebak:

At its regular meeting on Tuesday, December 6, 2016, the Wichita City Council considered the above-referenced request. The action of the City Council was to **APPROVE** subject to the recommendation by the MAPC.

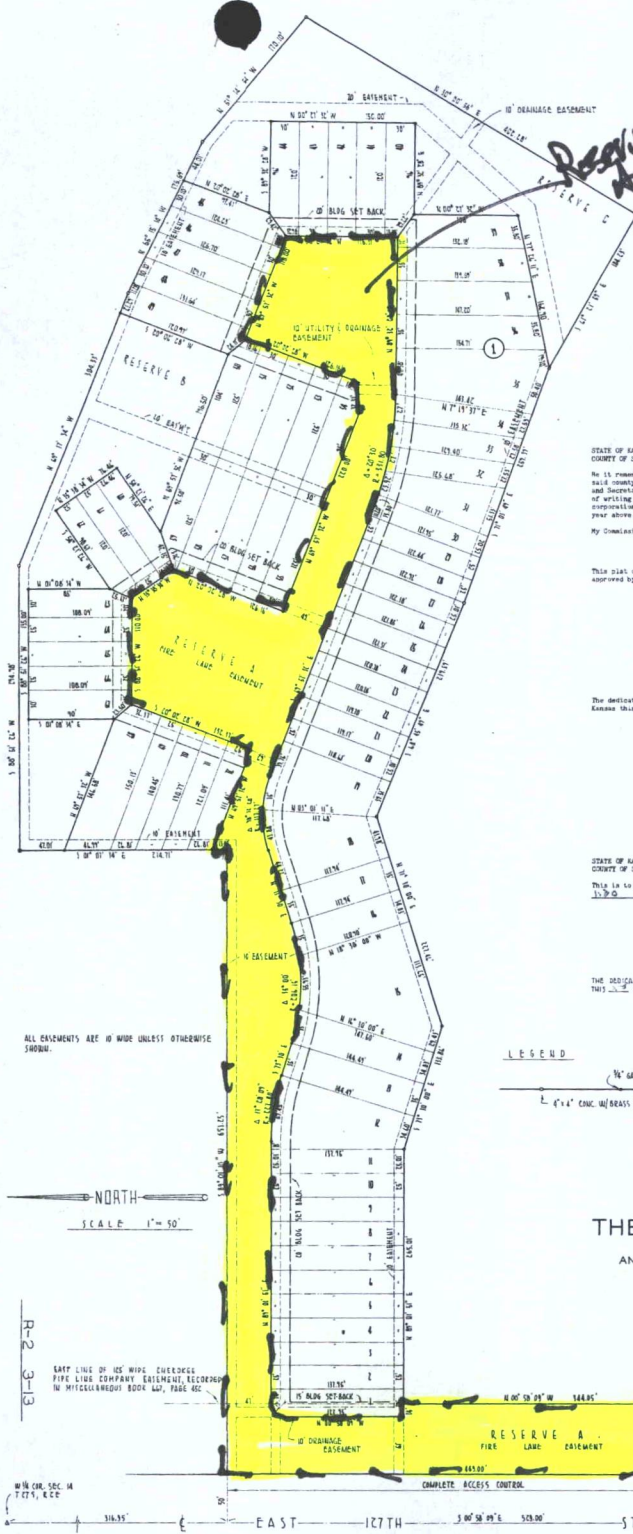
If you have any questions about this matter, please call 268-4421.

Sincerely,

Stephen Banks
Senior Planner

SB:klw

cc: Villas at Crestview Homeowners Association, Rick Slater, 1401 E Douglas, Wichita KS 67211



STATE OF KANSAS } ss.
 COUNTY OF SEDGWICK }
 I, Charles M. Goodness, being a duly licensed professional engineer in said county and state, do hereby certify that I have surveyed and plotted THE VILLAS AT CRESTVIEW and addition to Sedgewick County, Kansas, described as follows: Beginning south 07°00'00" west a distance of 124.00 feet from the west quarter corner of Section 18, T 27 S, R 8 E of the 6th P.M., Sedgewick County, Kansas; thence south 00°00'00" east on the west line of said Section 18, a distance of 274.00 feet; thence north 89°00'00" east a distance of 125.00 feet; thence north 00°00'00" west a distance of 264.00 feet; thence north 89°00'00" east a distance of 265.00 feet; thence south 73°30'00" east a distance of 83.86 feet; thence north 71°30'00" west a distance of 127.00 feet; thence north 69°00'00" east a distance of 229.29 feet; thence south 61°00'00" west a distance of 127.00 feet; thence north 07°00'00" east a distance of 207.28 feet; thence north 17°15'00" west a distance of 120.00 feet; thence north 65°15'00" west a distance of 170.00 feet; thence north 07°00'00" east a distance of 207.28 feet; thence north 07°00'00" east a distance of 207.28 feet; thence north 07°00'00" east a distance of 207.28 feet; thence north 07°00'00" east a distance of 207.28 feet to the point of beginning, containing 12.11 acres more or less.

Charles M. Goodness Engineer
 Charles M. Goodness

KNOW ALL MEN BY THESE PRESENTS:
 That we, Manhattan Del. Sol., Inc., a corporation, by its President, Frank H. Kessler and Secretary, H. Marvin Baslin, have caused the land described in the engineer's certificate to be platted including reserves and streets. Easements are hereby granted as indicated for utility and drainage construction and maintenance. Street is hereby dedicated to and for the use of the public. All other rights of access to or from 127th Street over and across the west line of Reserve A are hereby granted to the appropriate Governing Body, except for access to be located within the south 80 feet thereof. Easements are also granted for the use of private drives, parking areas and walkways. All service lines in Reserve A are hereby granted as a first class easement. The west 30 feet of Reserve A is for open space and for use as a park, as indicated, are for open space and recreational purposes.

MANHATTAN DEL. SOL., INC.
 Frank H. Kessler President
 H. Marvin Baslin Secretary

STATE OF KANSAS } ss.
 COUNTY OF SEDGWICK }
 We do hereby certify that on this 17 day of April, 1970, before me a notary public in and for said county and state, one MANHATTAN DEL. SOL., INC., a corporation, by its President, Frank H. Kessler and Secretary, H. Marvin Baslin, in me then to be the same persons who executed the foregoing instrument of writing and duly acknowledged the same as their voluntary act and deed and as the act and deed of said corporation. In testimony whereof I have hereunto set my hand and affixed my official seal the day and year above written.

Notary Public
 (SEAL)

This plat of THE VILLAS AT CRESTVIEW an addition to Sedgewick County, Kansas was submitted in and approved by the Wichita-Sedgewick County Metropolitan Area Planning Commission, Wichita, Kansas, dated this 18th day of May, 1970.

WICHITA-SEDGWICK COUNTY METROPOLITAN AREA PLANNING COMMISSION
 Robert L. Seaman Chairman
 Robert L. Seaman Secretary

The dedications shown on this plat accepted by the Board of County Commissioners of Sedgewick County, Kansas this 17th day of June, 1970.

Carl E. Ruch Chairman
 Robert L. Seaman Commissioner
 Robert L. Seaman Commissioner

Entered on Transfer Record this 18 day of June, 1970.
 #10126
 H. Marvin Baslin County Clerk

STATE OF KANSAS } ss.
 COUNTY OF SEDGWICK }
 This is to certify that this instrument was filed for record in the Register of Deeds Office at 1:25 P.M. on the 18th day of June, 1970.

John H. Hilde Register of Deeds
 Carol Ballant Deputy
 KARAL G. L. & A.T.

THE DESIGNATIONS SHOWN ON THIS PLAT ACCEPTED BY THE CITY COMMISSIONERS OF THE CITY OF WICHITA, KANSAS THIS 17th DAY OF June, 1970.

MAYOR
 A. PRICE WOODARD
 Clerk

LEGEND

1/2" GALVANIZED IRON PIPE
 2" 4" CONC. W/ BRASS CAP

PLAT OF
 THE VILLAS AT CRESTVIEW
 AN ADDITION TO SEDGWICK COUNTY-KANSAS

ALL EASEMENTS ARE 10 FEET UNLESS OTHERWISE SHOWN.

NORTH
 SCALE 1" = 50'

SAFETY LINE OF 1/2" WIDE CHECKERED PIPE LINE COMPANY EASEMENT, RECORDED IN METROPOLITAN BOOK 147, PAGE 422

EAST 127TH STREET 316.35' 127TH STREET 529.00'

Declaration of Consent - Retention of Plat I. Misc 669 pp 264

Plotted for the City of Wichita, Kansas 1970 pp 155

VA C2016-38



This digital plat record accurately reproduces in all details the original plat filed with the Sedgewick County Register of Deeds. Digitized under the supervision of Register of Deeds Bill Fries by Sedgewick County Geographic Information Systems.
 Bill Fries, Register of Deeds
 Digitized version of original signature

Inches

Inches