



**Wichita-Sedgwick County Metropolitan Area Planning Department**

November 29, 2017

MKEC Engineering Inc.  
c/o Brian Lindebak  
411 N. Webb Rd  
Wichita, KS, 67206

**Ref:** VAC2016-00045 - City request to vacate a portion of Waterman public street right-of-way located between Main Street and the Arkansas River (WCC I).

Dear Mr. Lindebak:

At its regular meeting on Tuesday, November 21, 2017, the Wichita City Council considered the above-referenced request. The action of the City Council was to **APPROVE** subject to the recommendation by the MAPC.

If you have any questions about this matter, please call 268-4421.

Sincerely,

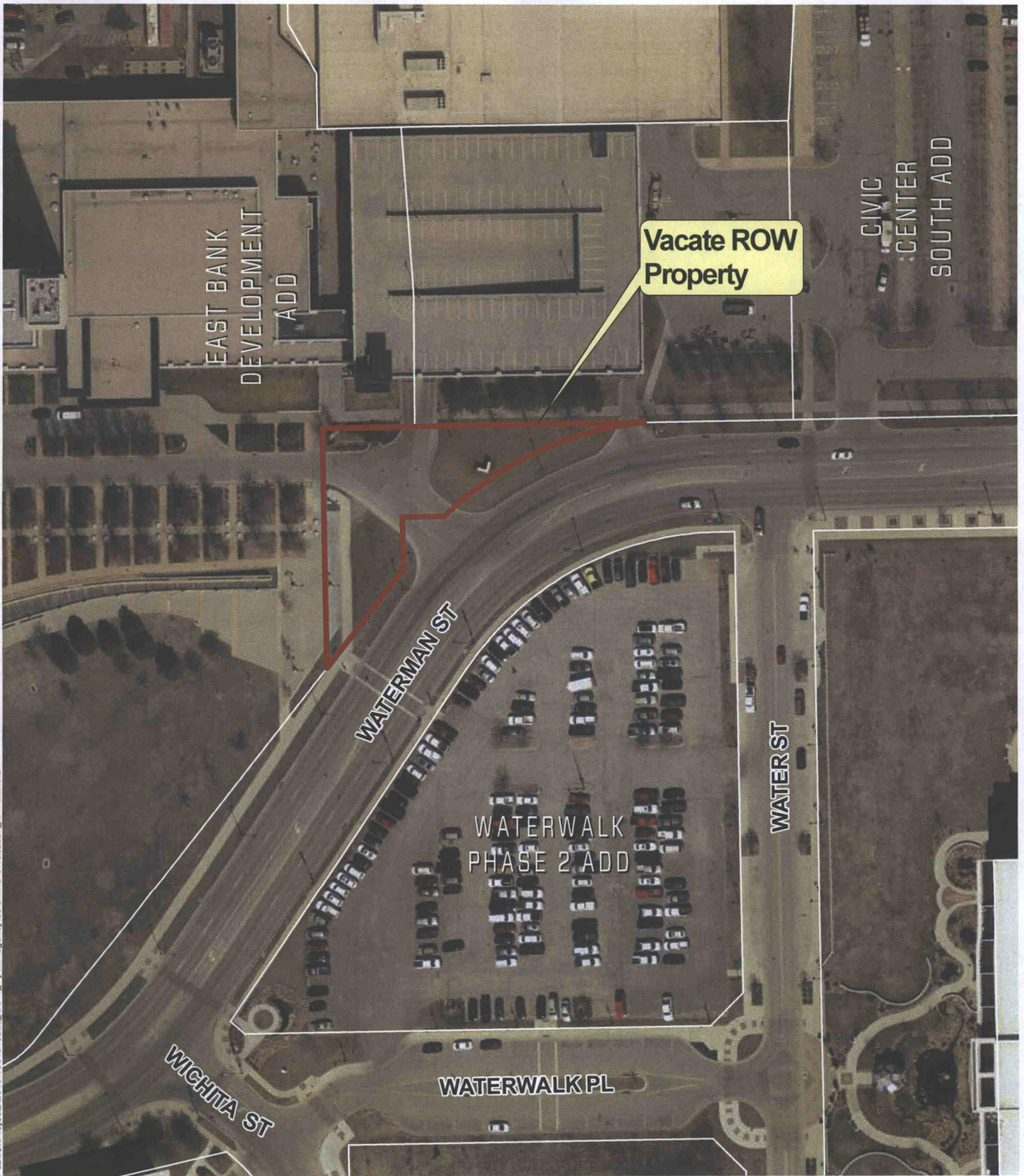
A handwritten signature in black ink that reads 'Kyle C. Kobe'.

Kyle Kobe  
Associate Planner

KK:klw

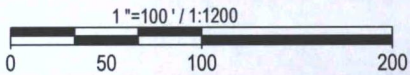
cc: City of Wichita, John Philbrick, 455 N Main, 13th Floor, Mail Stop 1-135  
City of Wichita, 400 W. Waterman St, Wichita KS, 67202

Path: J:\Projects\2016\16010305\_COW\_HyattRegency\05\Civil\GIS\Vacation\_ Exhibit.mxd



Vacate ROW Property

VAC2016-45



09.08.2016



# VACATION EXHIBIT

HYATT REGENCY

The information presented hereon is best available data gathered by MKEC from various outside sources. MKEC does not guarantee the positional accuracy the data shown. In no event shall MKEC become liable to users of the data presented hereon, for any loss or damages, consequential or otherwise, including but not limited to time, money, or goodwill, arising from the use of the presented data. In using the data presented hereon, users further agrees to indemnify, defend, and hold harmless MKEC for any and all liability of any nature arising out of or resulting from the lack of accuracy or correctness of the data, or the use of the data.