



ENGINEERING | SURVEYING | PLANNING  
LANDSCAPE ARCHITECTURE

(316)-262-7271 • 315 ELLIS • WICHITA, KANSAS 67211

State of Kansas )  
County of Sedgwick ) SS

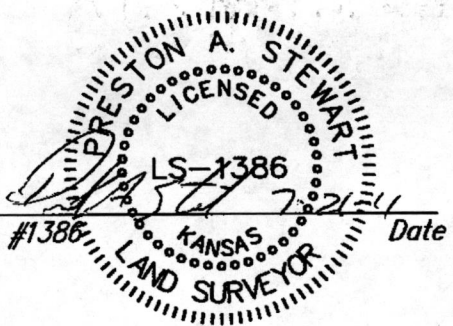
July 20, 2011

We, Baughman Company, P.A., Surveyors in aforesaid county and state do hereby certify that, under the supervision of the undersigned, we did on this 20th day of July, 2011, survey the following described parcels:

Parcel A:  
Lot 31, Hampton Acres, Wichita, Kansas, Sedgwick County, Kansas; EXCEPT the South 100 feet of the East 90 feet thereof.

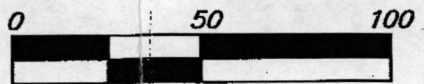
Parcel B:  
Lot 29, Hampton Acres, Wichita, Kansas, Sedgwick County, Kansas.

The accompanying sketch is a true and correct exhibit of said survey based on actual field measurements where the monuments are of the character and occupy the positions as indicated.

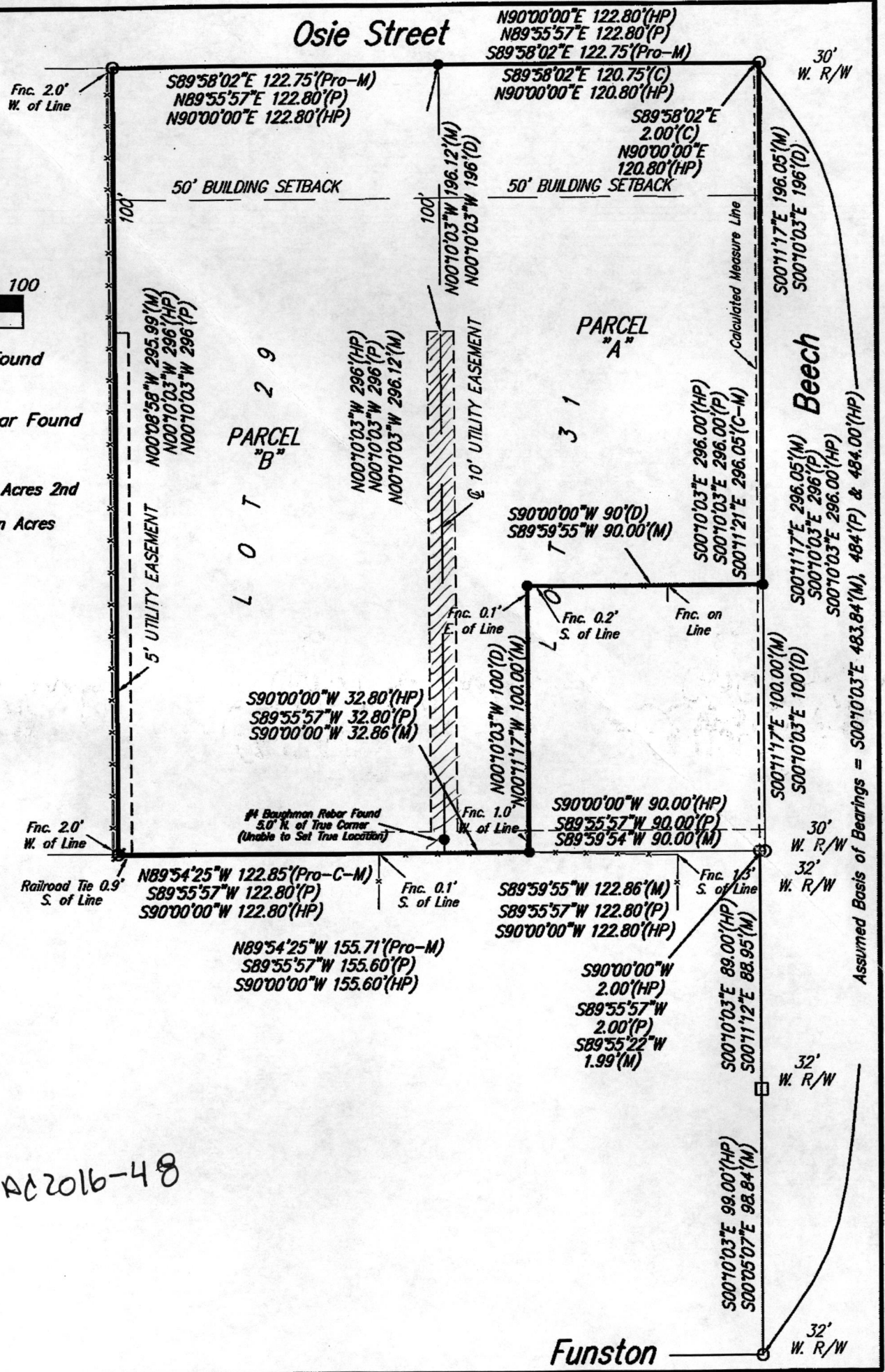


Preston A Stewart #1386 Date

NOTE: Baughman Company, P.A. has not researched any title examination of subject property. An abstract or title insurance company would need to be contacted to research and provide to us any easements, rights-of-ways or dedications.



- = #4 Baughman Rebar Found
  - = 1/2" Iron Pipe Found
  - = 3/4" Iron Pipe Found
  - ∅ = #4 CLS20 Capped Rebar Found
- (C) = Calculated  
(D) = Described  
(HP) = Platted information per Hampton Acres 2nd  
(M) = Measured  
(P) = Platted information per Hampton Acres  
(Pro) = Prorated



VAC 2016-48

Funston