

RIDGE PORT NORTH 4TH ADDITION

WICHITA, SEDGWICK COUNTY, KANSAS

UAC2016-51



- = 4" REBAR BY "SHIMBUNK" CAP (FRT)
- = 1/2" REIN (FOUND)
- ◐ = 4" REBAR BY "SHIMBUNK" CAP (FOUND)
- ◑ = 4" REBAR BY "SHIMBUNK" CAP (FOUND)
- ◒ = 1/2" REIN (FOUND)
- ◓ = 4" REBAR BY "SHIMBUNK" CAP (FOUND)
- ◔ = 1/2" REIN (FOUND)
- ◕ = 4" REBAR BY "SHIMBUNK" CAP (FOUND)
- ◖ = 4" REBAR BY "SHIMBUNK" CAP (FOUND)
- ◗ = 4" REBAR BY "SHIMBUNK" CAP (FOUND)
- ◘ = 4" REBAR BY "SHIMBUNK" CAP (FOUND)
- ◙ = 4" REBAR BY "SHIMBUNK" CAP (FOUND)
- ◚ = 4" REBAR BY "SHIMBUNK" CAP (FOUND)
- ◛ = 4" REBAR BY "SHIMBUNK" CAP (FOUND)
- ◜ = 4" REBAR BY "SHIMBUNK" CAP (FOUND)
- ◝ = 4" REBAR BY "SHIMBUNK" CAP (FOUND)
- ◞ = 4" REBAR BY "SHIMBUNK" CAP (FOUND)
- ◟ = 4" REBAR BY "SHIMBUNK" CAP (FOUND)
- ◠ = 4" REBAR BY "SHIMBUNK" CAP (FOUND)
- ◡ = 4" REBAR BY "SHIMBUNK" CAP (FOUND)
- ◢ = 4" REBAR BY "SHIMBUNK" CAP (FOUND)
- ◣ = 4" REBAR BY "SHIMBUNK" CAP (FOUND)
- ◤ = 4" REBAR BY "SHIMBUNK" CAP (FOUND)
- ◥ = 4" REBAR BY "SHIMBUNK" CAP (FOUND)
- = 4" REBAR BY "SHIMBUNK" CAP (FOUND)
- ◧ = 4" REBAR BY "SHIMBUNK" CAP (FOUND)
- ◨ = 4" REBAR BY "SHIMBUNK" CAP (FOUND)
- ◩ = 4" REBAR BY "SHIMBUNK" CAP (FOUND)
- ◪ = 4" REBAR BY "SHIMBUNK" CAP (FOUND)
- ◫ = 4" REBAR BY "SHIMBUNK" CAP (FOUND)
- ◬ = 4" REBAR BY "SHIMBUNK" CAP (FOUND)
- ◭ = 4" REBAR BY "SHIMBUNK" CAP (FOUND)
- ◮ = 4" REBAR BY "SHIMBUNK" CAP (FOUND)
- ◯ = 4" REBAR BY "SHIMBUNK" CAP (FOUND)
- ◰ = 4" REBAR BY "SHIMBUNK" CAP (FOUND)
- ◱ = 4" REBAR BY "SHIMBUNK" CAP (FOUND)
- ◲ = 4" REBAR BY "SHIMBUNK" CAP (FOUND)
- ◳ = 4" REBAR BY "SHIMBUNK" CAP (FOUND)
- ◴ = 4" REBAR BY "SHIMBUNK" CAP (FOUND)
- ◵ = 4" REBAR BY "SHIMBUNK" CAP (FOUND)
- ◶ = 4" REBAR BY "SHIMBUNK" CAP (FOUND)
- ◷ = 4" REBAR BY "SHIMBUNK" CAP (FOUND)
- ◸ = 4" REBAR BY "SHIMBUNK" CAP (FOUND)
- ◹ = 4" REBAR BY "SHIMBUNK" CAP (FOUND)
- ◺ = 4" REBAR BY "SHIMBUNK" CAP (FOUND)
- ◻ = 4" REBAR BY "SHIMBUNK" CAP (FOUND)
- ◼ = 4" REBAR BY "SHIMBUNK" CAP (FOUND)
- ◽ = 4" REBAR BY "SHIMBUNK" CAP (FOUND)
- ◾ = 4" REBAR BY "SHIMBUNK" CAP (FOUND)
- ◿ = 4" REBAR BY "SHIMBUNK" CAP (FOUND)
- ◠ = 4" REBAR BY "SHIMBUNK" CAP (FOUND)
- ◡ = 4" REBAR BY "SHIMBUNK" CAP (FOUND)
- ◢ = 4" REBAR BY "SHIMBUNK" CAP (FOUND)
- ◣ = 4" REBAR BY "SHIMBUNK" CAP (FOUND)
- ◤ = 4" REBAR BY "SHIMBUNK" CAP (FOUND)
- ◥ = 4" REBAR BY "SHIMBUNK" CAP (FOUND)
- = 4" REBAR BY "SHIMBUNK" CAP (FOUND)
- ◧ = 4" REBAR BY "SHIMBUNK" CAP (FOUND)
- ◨ = 4" REBAR BY "SHIMBUNK" CAP (FOUND)
- ◩ = 4" REBAR BY "SHIMBUNK" CAP (FOUND)
- ◪ = 4" REBAR BY "SHIMBUNK" CAP (FOUND)
- ◫ = 4" REBAR BY "SHIMBUNK" CAP (FOUND)
- ◬ = 4" REBAR BY "SHIMBUNK" CAP (FOUND)
- ◭ = 4" REBAR BY "SHIMBUNK" CAP (FOUND)
- ◮ = 4" REBAR BY "SHIMBUNK" CAP (FOUND)
- ◯ = 4" REBAR BY "SHIMBUNK" CAP (FOUND)
- ◰ = 4" REBAR BY "SHIMBUNK" CAP (FOUND)
- ◱ = 4" REBAR BY "SHIMBUNK" CAP (FOUND)
- ◲ = 4" REBAR BY "SHIMBUNK" CAP (FOUND)
- ◳ = 4" REBAR BY "SHIMBUNK" CAP (FOUND)
- ◴ = 4" REBAR BY "SHIMBUNK" CAP (FOUND)
- ◵ = 4" REBAR BY "SHIMBUNK" CAP (FOUND)
- ◶ = 4" REBAR BY "SHIMBUNK" CAP (FOUND)
- ◷ = 4" REBAR BY "SHIMBUNK" CAP (FOUND)
- ◸ = 4" REBAR BY "SHIMBUNK" CAP (FOUND)
- ◹ = 4" REBAR BY "SHIMBUNK" CAP (FOUND)
- ◺ = 4" REBAR BY "SHIMBUNK" CAP (FOUND)
- ◻ = 4" REBAR BY "SHIMBUNK" CAP (FOUND)
- ◼ = 4" REBAR BY "SHIMBUNK" CAP (FOUND)
- ◽ = 4" REBAR BY "SHIMBUNK" CAP (FOUND)
- ◾ = 4" REBAR BY "SHIMBUNK" CAP (FOUND)
- ◿ = 4" REBAR BY "SHIMBUNK" CAP (FOUND)

- (M) = MEASURED
- (P) = PLATTED
- (C) = CALCULATED
- (D) = DESCRIBED
- (R) = REBAR
- (C-R) = CALCULATED PER REBAR DESCRIPTION
- (C-DEEM) = CALCULATED PER REBAR DESCRIPTION

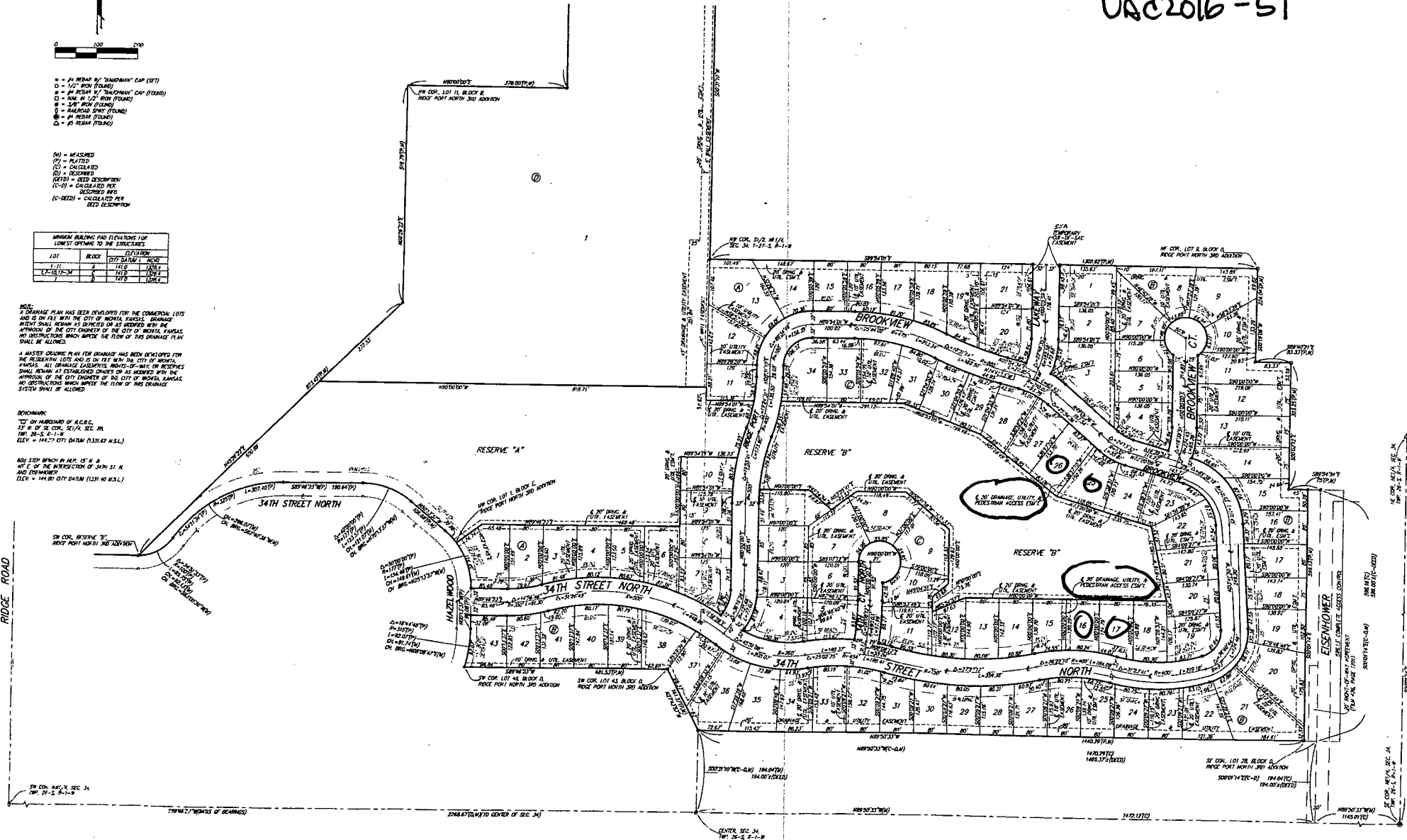
LOT	BLOCK	STREETS	AREA	PERCENTAGE
1-11	1	14th	1.41	100%
12-22	2	14th	1.41	100%
23-33	3	14th	1.41	100%
34-44	4	14th	1.41	100%
45-55	5	14th	1.41	100%
56-66	6	14th	1.41	100%
67-77	7	14th	1.41	100%
78-88	8	14th	1.41	100%
89-99	9	14th	1.41	100%
100-110	10	14th	1.41	100%
111-121	11	14th	1.41	100%
122-132	12	14th	1.41	100%
133-143	13	14th	1.41	100%
144-154	14	14th	1.41	100%
155-165	15	14th	1.41	100%
166-176	16	14th	1.41	100%
177-187	17	14th	1.41	100%
188-198	18	14th	1.41	100%
199-209	19	14th	1.41	100%
210-220	20	14th	1.41	100%
221-231	21	14th	1.41	100%
232-242	22	14th	1.41	100%
243-253	23	14th	1.41	100%
254-264	24	14th	1.41	100%
265-275	25	14th	1.41	100%
276-286	26	14th	1.41	100%
287-297	27	14th	1.41	100%
298-308	28	14th	1.41	100%
309-319	29	14th	1.41	100%
320-330	30	14th	1.41	100%
331-341	31	14th	1.41	100%
342-352	32	14th	1.41	100%
353-363	33	14th	1.41	100%
364-374	34	14th	1.41	100%
375-385	35	14th	1.41	100%
386-396	36	14th	1.41	100%
397-407	37	14th	1.41	100%
408-418	38	14th	1.41	100%
419-429	39	14th	1.41	100%
430-440	40	14th	1.41	100%
441-451	41	14th	1.41	100%
452-462	42	14th	1.41	100%
463-473	43	14th	1.41	100%
474-484	44	14th	1.41	100%
485-495	45	14th	1.41	100%
496-506	46	14th	1.41	100%
507-517	47	14th	1.41	100%
518-528	48	14th	1.41	100%
529-539	49	14th	1.41	100%
540-550	50	14th	1.41	100%
551-561	51	14th	1.41	100%
562-572	52	14th	1.41	100%
573-583	53	14th	1.41	100%
584-594	54	14th	1.41	100%
595-605	55	14th	1.41	100%
606-616	56	14th	1.41	100%
617-627	57	14th	1.41	100%
628-638	58	14th	1.41	100%
639-649	59	14th	1.41	100%
650-660	60	14th	1.41	100%
661-671	61	14th	1.41	100%
672-682	62	14th	1.41	100%
683-693	63	14th	1.41	100%
694-704	64	14th	1.41	100%
705-715	65	14th	1.41	100%
716-726	66	14th	1.41	100%
727-737	67	14th	1.41	100%
738-748	68	14th	1.41	100%
749-759	69	14th	1.41	100%
760-770	70	14th	1.41	100%
771-781	71	14th	1.41	100%
782-792	72	14th	1.41	100%
793-803	73	14th	1.41	100%
804-814	74	14th	1.41	100%
815-825	75	14th	1.41	100%
826-836	76	14th	1.41	100%
837-847	77	14th	1.41	100%
848-858	78	14th	1.41	100%
859-869	79	14th	1.41	100%
870-880	80	14th	1.41	100%
881-891	81	14th	1.41	100%
892-902	82	14th	1.41	100%
903-913	83	14th	1.41	100%
914-924	84	14th	1.41	100%
925-935	85	14th	1.41	100%
936-946	86	14th	1.41	100%
947-957	87	14th	1.41	100%
958-968	88	14th	1.41	100%
969-979	89	14th	1.41	100%
980-990	90	14th	1.41	100%
991-1001	91	14th	1.41	100%

NOTE:
A DRAINAGE PLAN HAS BEEN DEVELOPED FOR THE COMMERCIAL LOTS AND IS ON FILE WITH THE CITY OF WICHITA, KANSAS. DRAINAGE ADJUSTMENTS SHALL BE MADE AS NECESSARY TO MAINTAIN THE APPROVED FLOW OF THE CITY OF WICHITA, KANSAS. ANY CHANGES TO THE DRAINAGE PLAN SHALL BE APPROVED BY THE CITY ENGINEER OF THE CITY OF WICHITA, KANSAS.

A MASTER DRAINAGE PLAN FOR THE ADDITION HAS BEEN DEVELOPED FOR THE RESERVES AND IS ON FILE WITH THE CITY OF WICHITA, KANSAS. ALL DRAINAGE ADJUSTMENTS, RIGHTS-OF-WAY, OR RESERVES SHALL REMAIN AS ESTABLISHED UNLESS OTHERWISE APPROVED BY THE CITY ENGINEER OF THE CITY OF WICHITA, KANSAS. ANY CHANGES TO THE MASTER DRAINAGE PLAN SHALL BE APPROVED BY THE CITY ENGINEER OF THE CITY OF WICHITA, KANSAS.

BENCHMARK:
TOP OF MARLBOROUGH B.C.C. 12' W. OF SE COR. 1/4 SEC. 34, T4S, R1E, S1W, ELEV. = 1442.71 CITY DATUM (1131.62 M.S.L.)

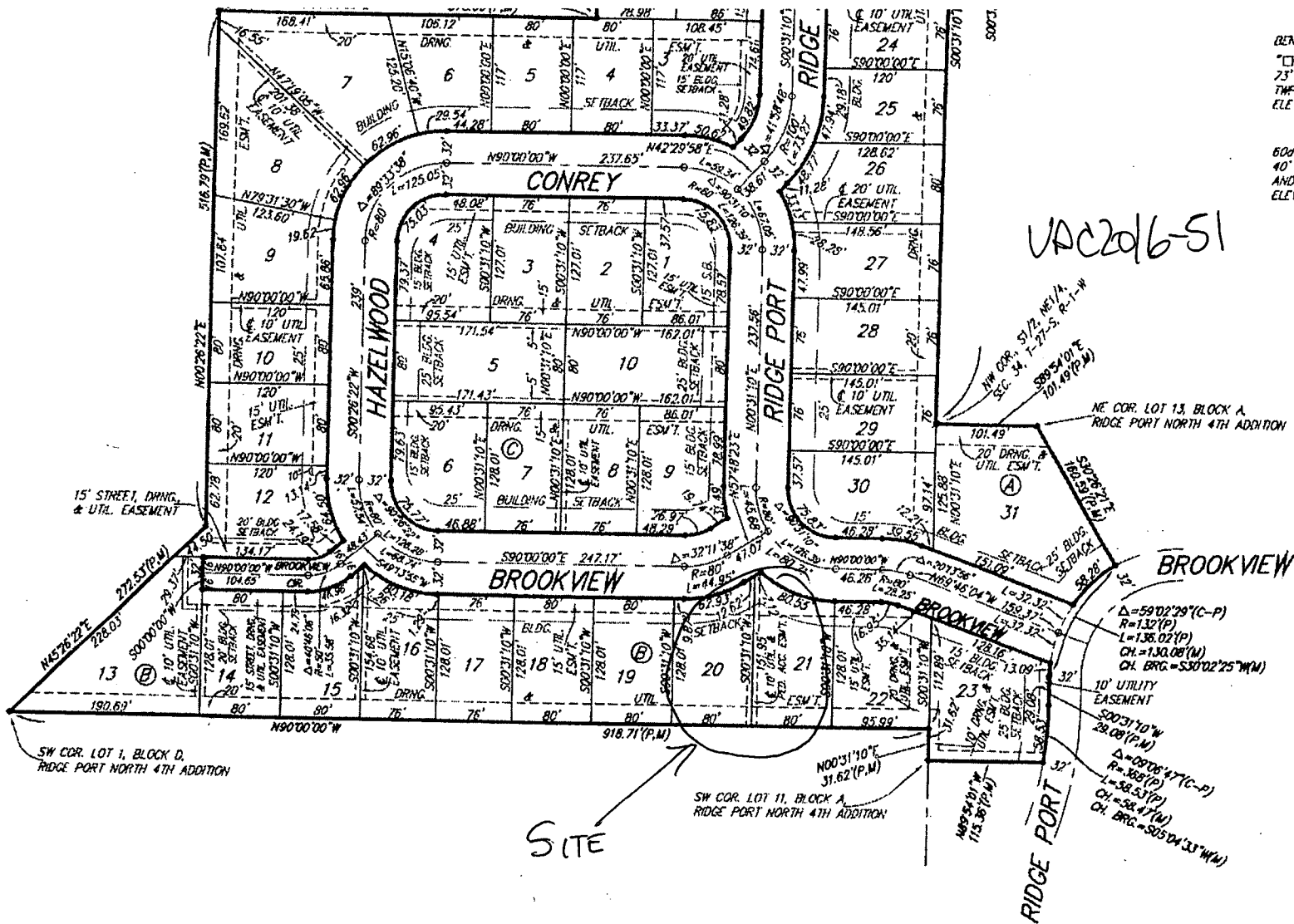
804' STIP. WHICH IN MAP 15' N. & 40' E. OF THE INTERSECTION OF 34TH ST. N. AND DRAINAGE ADJUSTMENTS SHALL BE APPROVED BY THE CITY ENGINEER OF THE CITY OF WICHITA, KANSAS. ANY CHANGES TO THE MASTER DRAINAGE PLAN SHALL BE APPROVED BY THE CITY ENGINEER OF THE CITY OF WICHITA, KANSAS.



BENCHMARK:
 "C" ON HUBGUARD OF R.C.B.C.,
 73' W. OF SE COR., SE 1/4, SEC. 28,
 TWP. 26-S, R-1-W
 ELEV. = 144.22 CITY DATUM (1331.62 M.S.L.)

600 STEP BENCH IN H.P. 15' N. &
 40' E. OF THE INTERSECTION OF 34TH ST. N
 AND EISENHOWER
 ELEV. = 144.00 CITY DATUM (1331.40 M.S.L.)

VAC2016-51



SW COR. LOT 1, BLOCK D,
 RIDGE PORT NORTH 4TH ADDITION

SW COR. LOT 11, BLOCK A,
 RIDGE PORT NORTH 4TH ADDITION

$\Delta = 59^{\circ}02'29''(C-P)$
 $R = 132'(P)$
 $L = 136.02'(P)$
 $CH = 130.08'(M)$
 $CH. BRG. = S50^{\circ}02'25''(M)$

$\Delta = 09^{\circ}06'47''(C-P)$
 $R = 100'(P)$
 $L = 58.53'(P)$
 $CH = 54.41'(M)$
 $CH. BRG. = S05^{\circ}04'33''(M)$

SITE

Ridge Port North 5th Add

NOTE:
 A master grading plan for drainage has been developed for this subdivision and is on file with the City of Wichita, Kansas. All drainage easements, rights-of-way, or reserves shall remain at established grades or as modified with the approval of the City Engineer of the City of Wichita, Kansas. No obstructions which impede the flow of this drainage system shall be allowed.