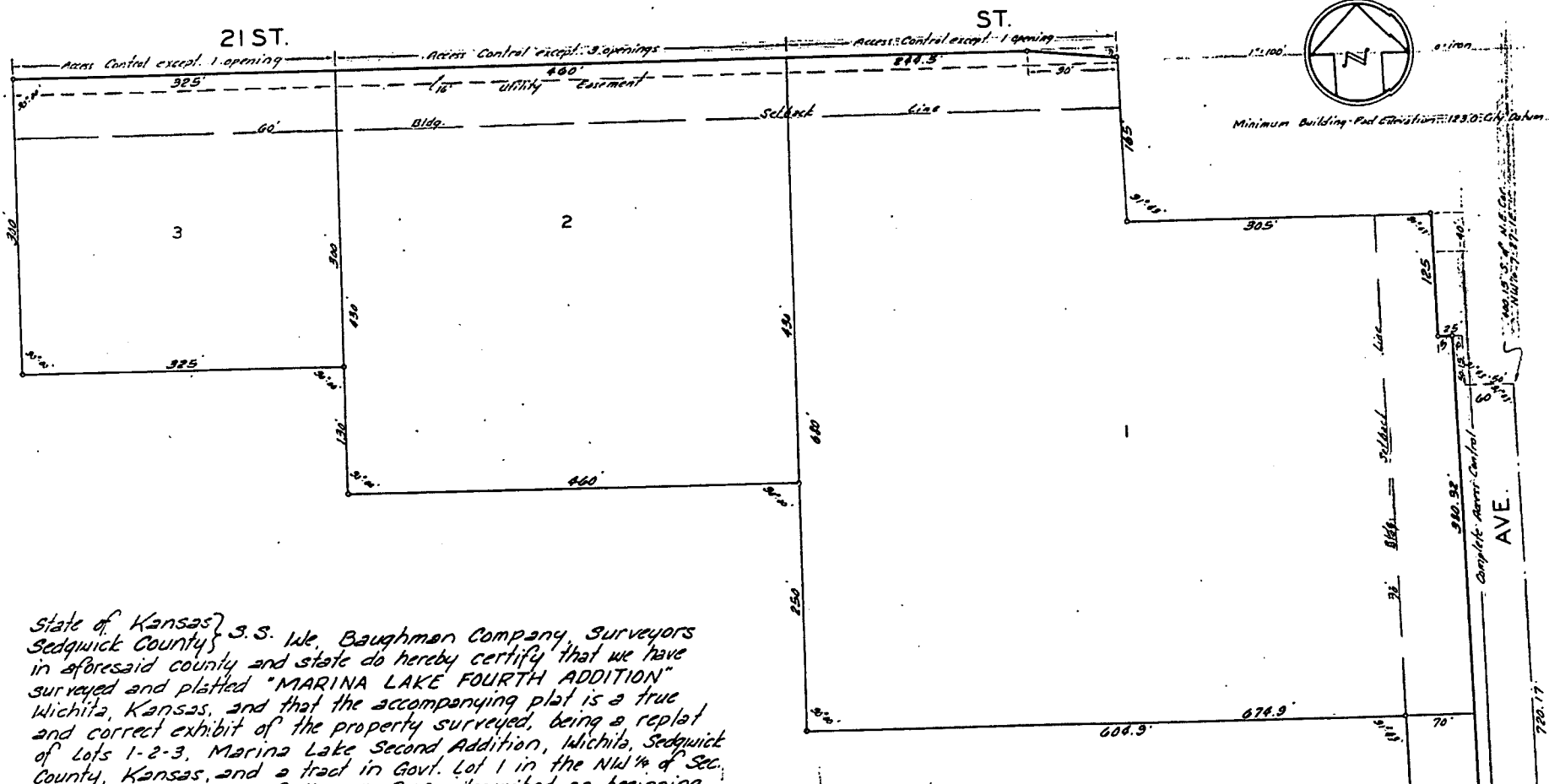


# MARINA LAKE FOURTH ADDITION

WICHITA, KANSAS.



State of Kansas } S. S. We, Baughman Company, Surveyors  
 Sedquick County }  
 in aforesaid county and state do hereby certify that we have  
 surveyed and platted "MARINA LAKE FOURTH ADDITION"  
 Wichita, Kansas, and that the accompanying plat is a true  
 and correct exhibit of the property surveyed, being a replat  
 of Lots 1-2-3, Marina Lake Second Addition, Wichita, Sedquick  
 County, Kansas, and a tract in Govt. Lot 1 in the NW 1/4 of Sec.