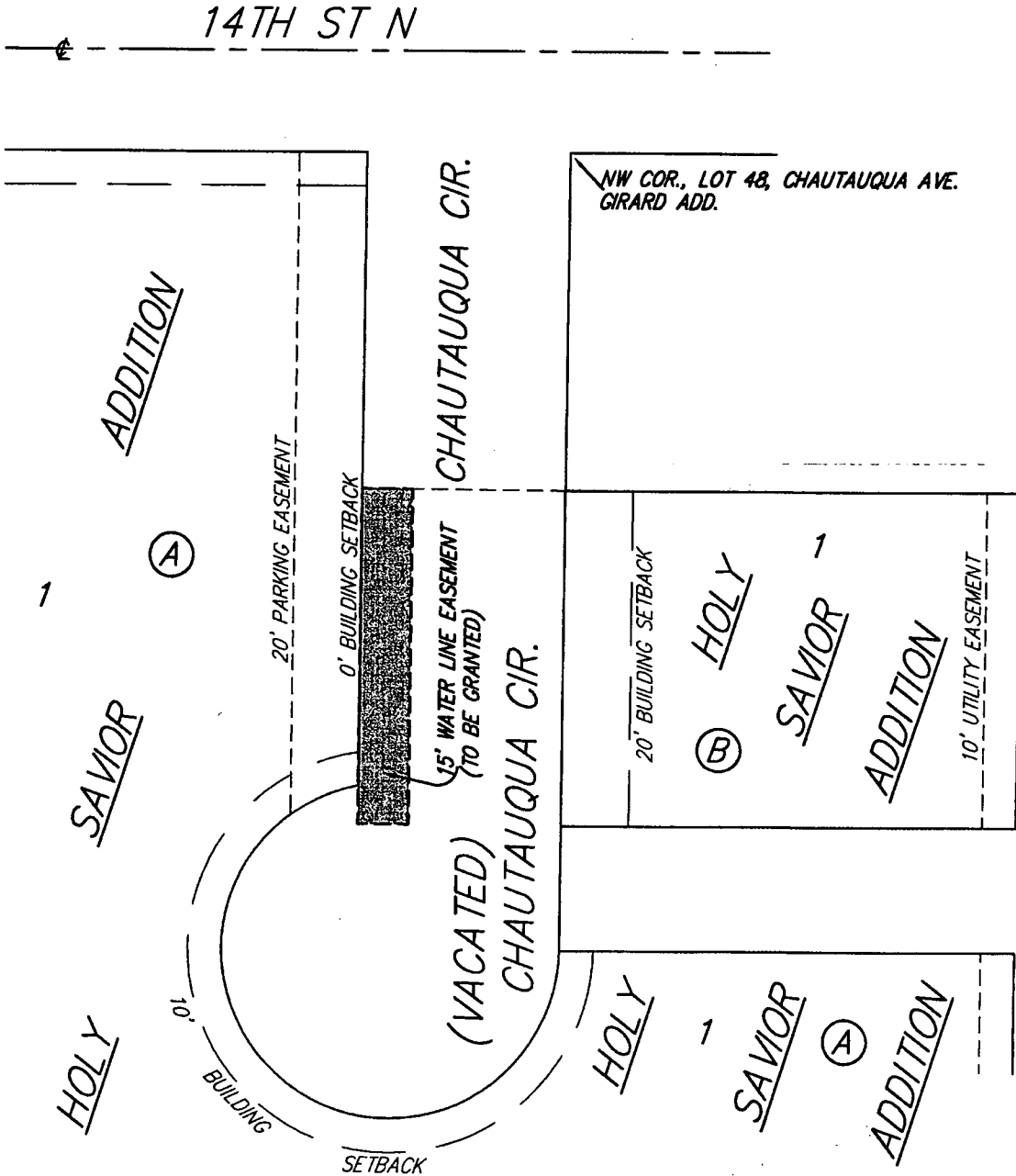
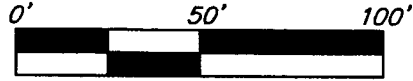


EXHIBIT "A"

**A WATER LINE EASEMENT IN VACATED CHAUTAUQUA AVE.,
HOLY SAVIOR ADDITION, WICHITA, SEDGWICK COUNTY, KANSAS**



INDICATES LEGAL DESCRIPTION OF
EASEMENT AREA TO BE GRANTED



5 FEB 2018

B Baughman Company, P.A.
315 Ellis St. Wichita, KS 67211 P 316-262-7271 F 316-262-0149
Baughman ENGINEERING | SURVEYING | PLANNING | LANDSCAPE ARCHITECTURE

F:\BAUGHMAN LIBRARY\SURVEYING INFO\EXHIBIT\EXHIBIT\SECEC ESMT 17-11-G124.DWG\MGC