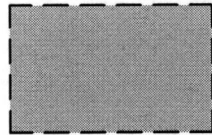
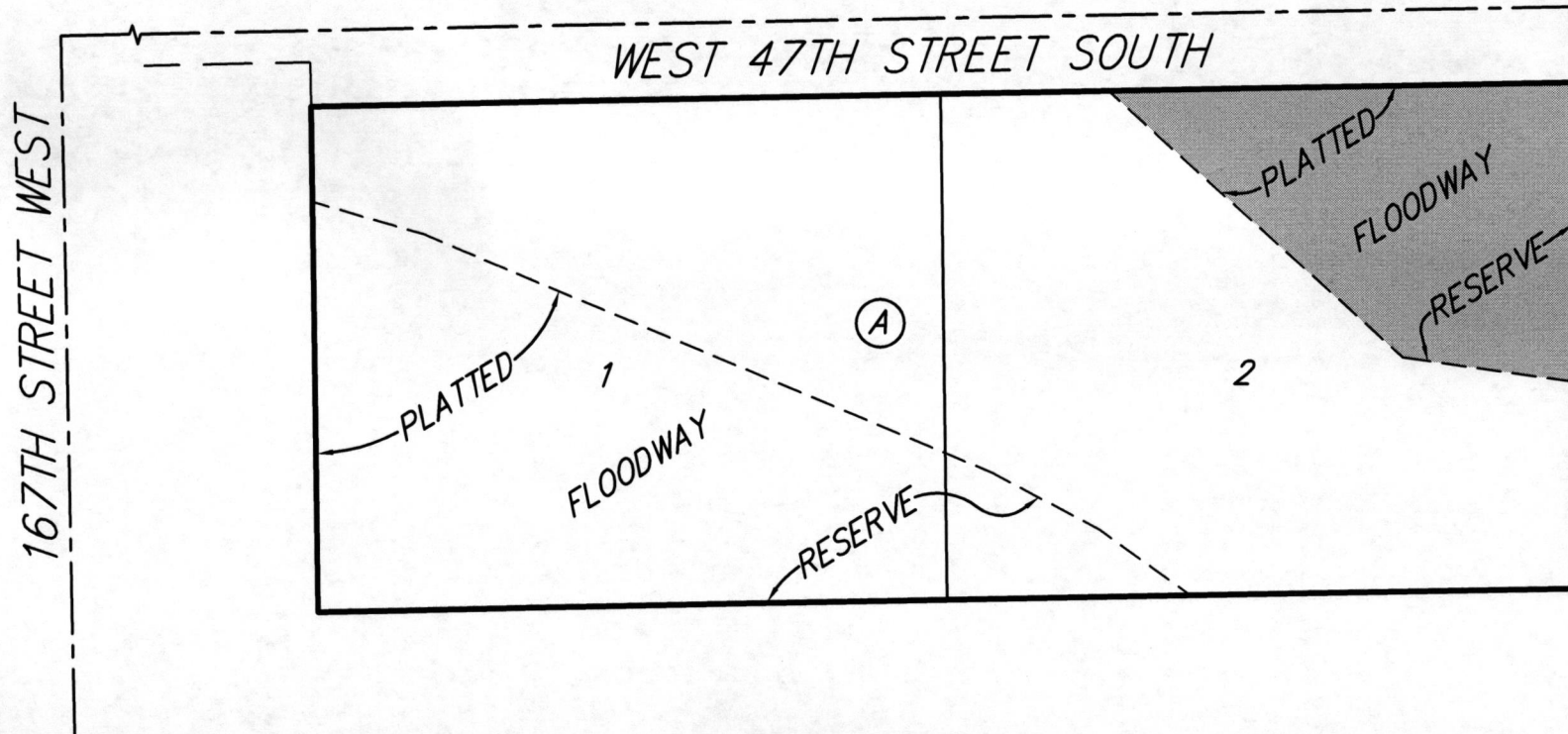
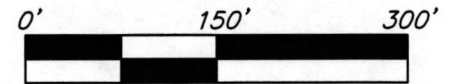


EXHIBIT

PART OF THE FLOODWAY RESERVE IN G. LEONARD ADDITION, SEDGWICK COUNTY, KANSAS



INDICATES THE AREA OF THE
LEGAL DESCRIPTION FOR THAT
PART OF THE FLOODWAY
RESERVE TO BE VACATED



14 AUG 2017

 **Baughman Company, P.A.**
315 Ellis St. Wichita, KS 67211 P 316-262-7271 F 316-262-0149
Baughman ENGINEERING | SURVEYING | PLANNING | LANDSCAPE ARCHITECTURE