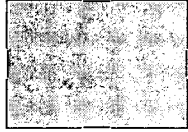
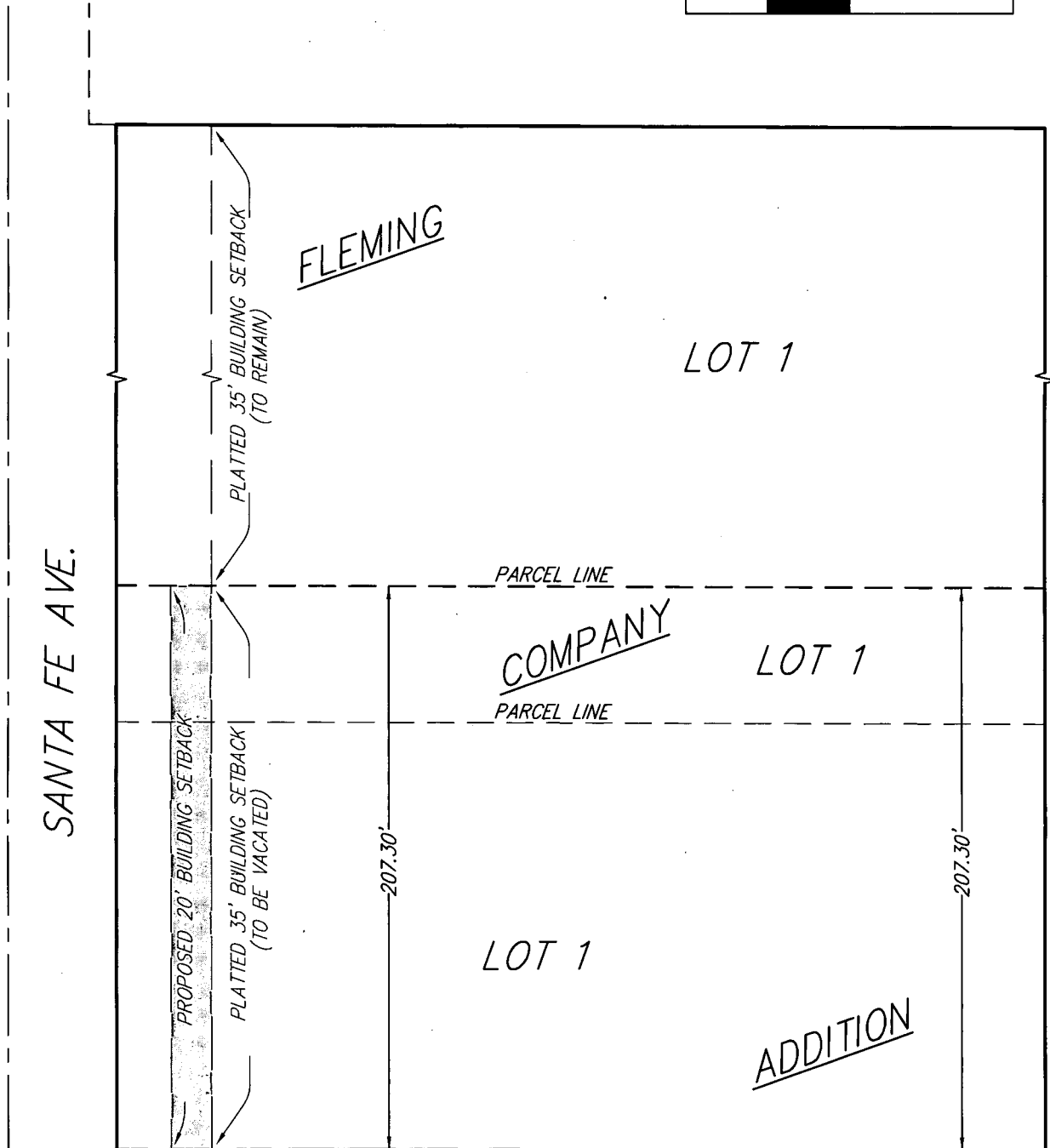
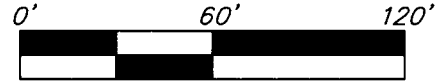


EXHIBIT

VACATION OF PART OF THE PLATTED BUILDING SETBACK IN FLEMING COMPANY ADDITION TO WICHITA, KANSAS



INDICATES AREA OF LEGAL DESCRIPTION FOR VACATION OF PART OF PLATTED BUILDING SETBACK



21 JUNE 2017

 **Baughman Company, P.A.**
315 Ellis St. Wichita, KS 67211 P 316-262-7271 F 316-262-0149
Baughman ENGINEERING | SURVEYING | PLANNING | LANDSCAPE ARCHITECTURE