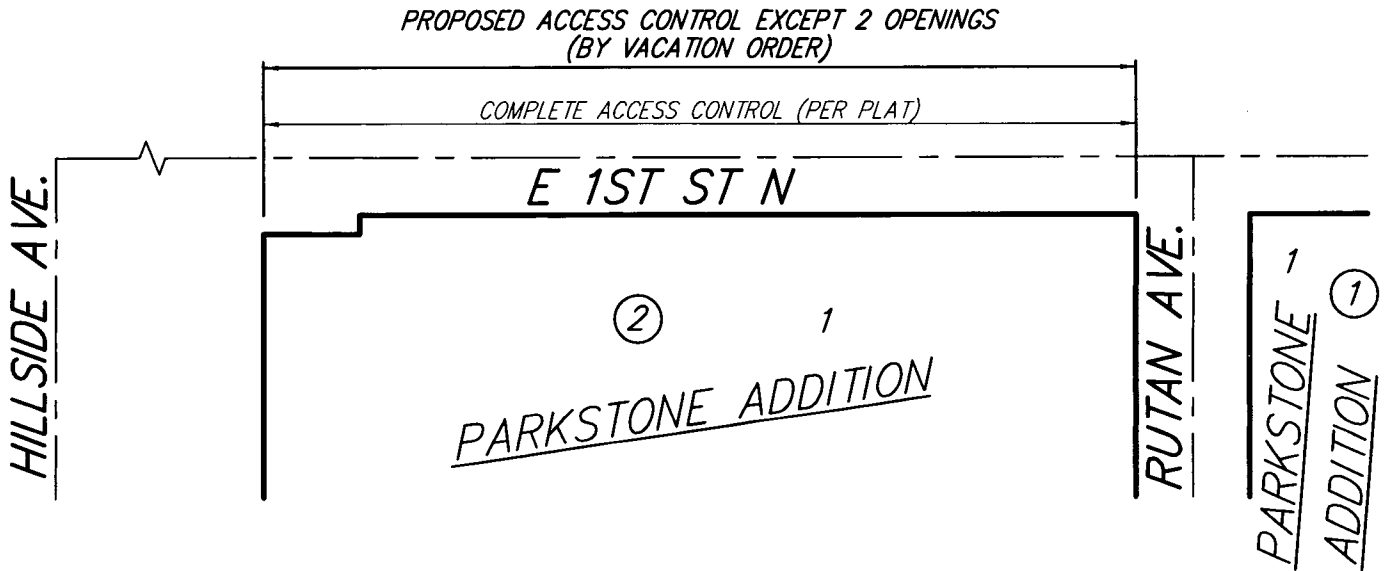
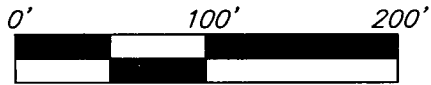


EXHIBIT

**TWO ACCESS OPENINGS OVER AND ACROSS
THE NORTH LINE OF LOT 1, BLOCK 2, PARKSTONE ADDITION
TO WICHITA, SEDGWICK COUNTY, KANSAS**



8 JUNE 2017

B Baughman Company, P.A.
315 Ellis St. Wichita, KS 67211 P 316-262-7271 F 316-262-0149
Baughman ENGINEERING | SURVEYING | PLANNING | LANDSCAPE ARCHITECTURE