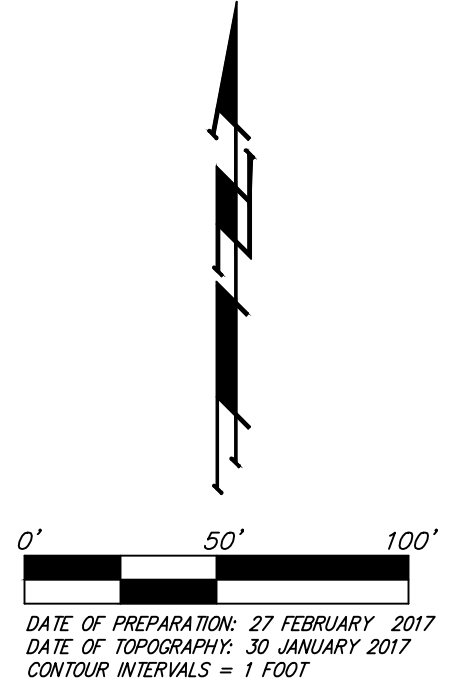
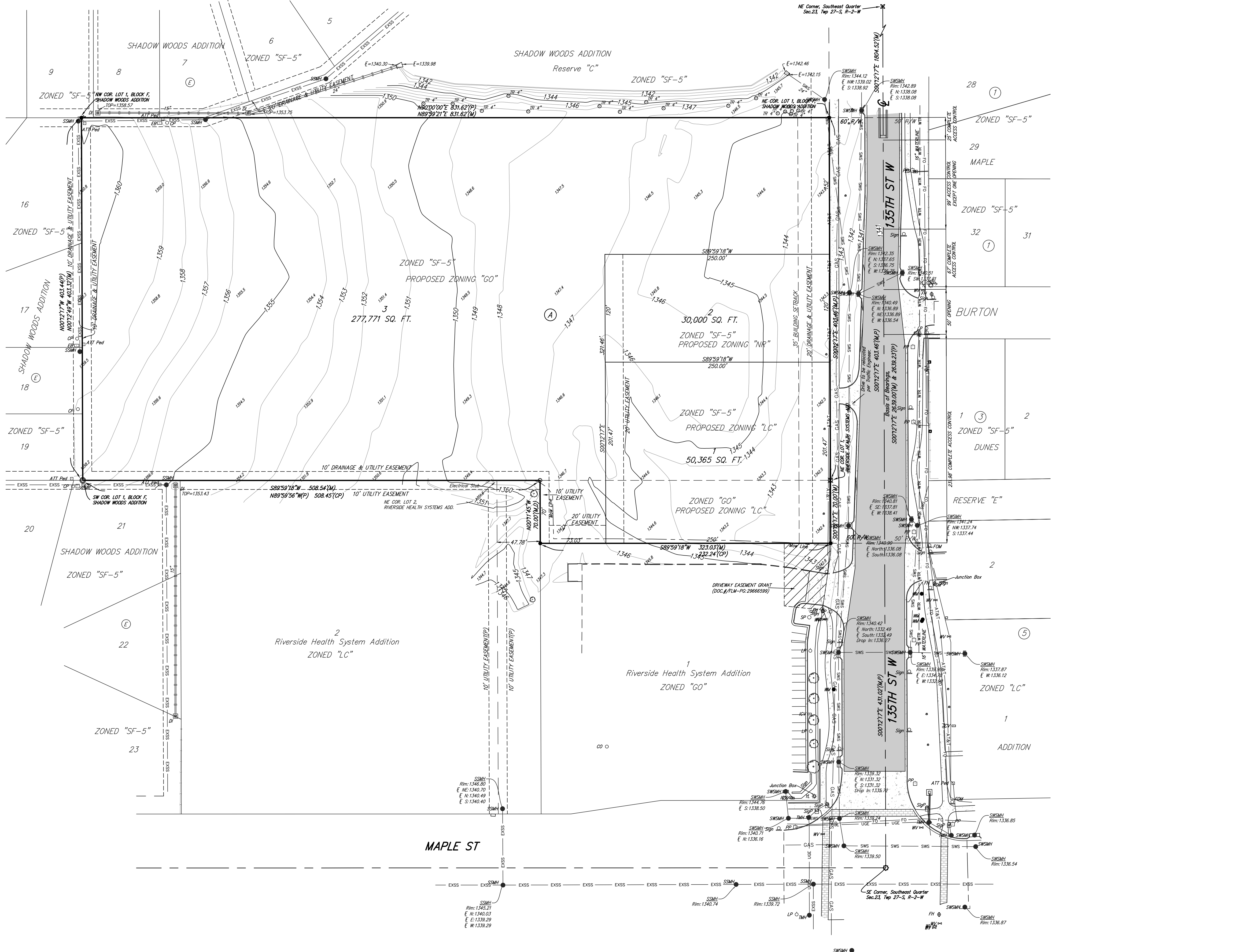


PRELIMINARY PLAT

THE HERITAGE AT AUBURN HILLS

AN ADDITION TO WICHITA, SEDGWICK COUNTY, KANSAS



OWNER/DEVELOPER:
 MAPLE 135, LLC
 130 W. MARKET
 WICHITA, KS 67202

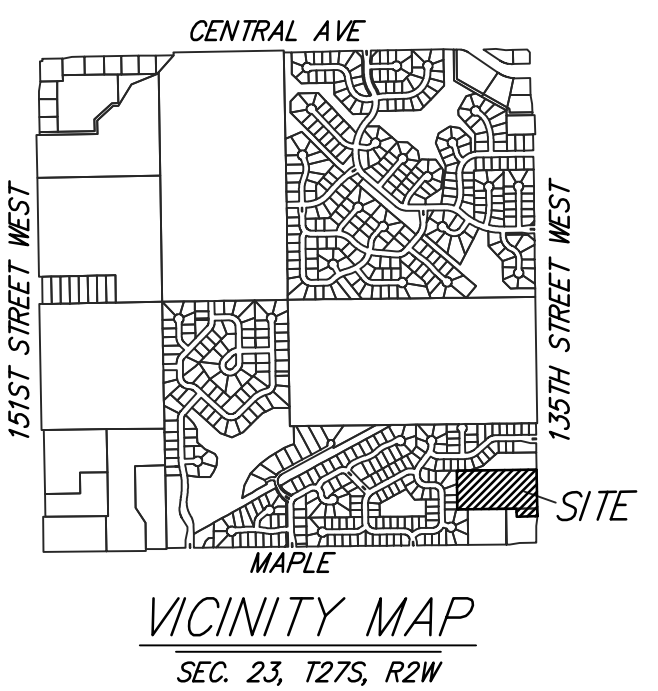
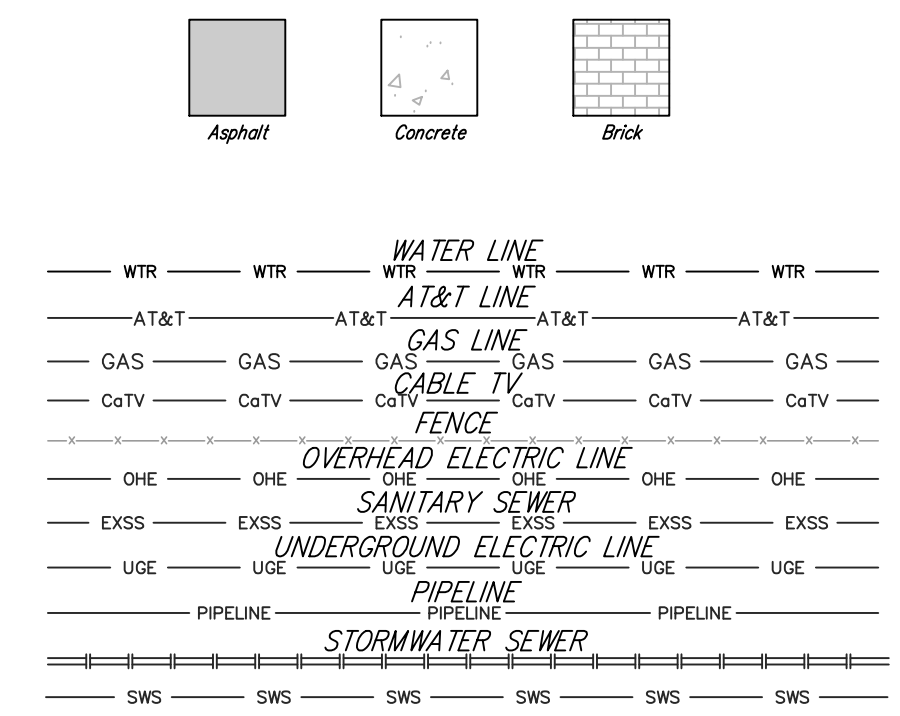
LEGAL DESCRIPTION:
 LOT 1, BLOCK F, SHADOW WOODS ADDITION,
 WICHITA, SEDGWICK COUNTY, KANSAS,
 TOGETHER WITH THE NORTH 70.00 FEET OF
 LOT 1, EXCEPT THE WEST 47.78 FEET,
 RIVERSIDE HEALTH SYSTEM ADDITION, WICHITA,
 SEDGWICK COUNTY, KANSAS.

BENCHMARK:
 CROSS CUT EAST EDGE OF SIDEWALK 60'±
 NORTH OF THE SE CORNER OF LOT 1, BLOCK A.
 ELEV. = 1342.07 (NAVD88)

- = #4 Baughman Rebar Set
- = Chiselled "X" Set
- = #4 Baughman Rebar Found
- = #4 Baughman Rebar Found (Green Cap)
- = #4 "Savoy" Capped Rebar Found (Blue Cap)
- = #4 Rebar Found (Origin Unknown)
- = 1.2" Iron Pipe Found (Monument Box)
- = #4 "Schwab-Eaton" Capped Rebar Found (Thimble)
- ✕ = Benchmark

ATT Ped □ = AT&T Pedestal
W ○ = Cased Well
CO ○ = Clean Out
DI □ = Drop Inlet
EB □ = Electric Box
FH ○ = Fire Hydrant
FO ○ = Fiber Optics Marker
Guy ○ = Guy Anchor
IV ○ = Irrigation Control Valve
LP ○ = Light Pole
PP ○ = Power Pole

Sign □ = Sign
Signal ○ = Signal Pole
SSMH ○ = Sanitary sewer Manhole
SP ○ = Stand Pipe
SWMH ○ = Storm Water Sewer Manhole
TMH ○ = Traffic Manhole
Tree ○ = Tree
TV ○ = Television Pedestal
Water Meter ○ = Water Meter
Water Valve ○ = Water Valve
Yard Light ○ = Yard Light



**THE HERITAGE
 AT AUBURN HILLS**

24 February 2017

Baughman Company, P.A.
 315 Ellis St. Wichita, KS 67211 P 316-262-7271 F 316-262-0149

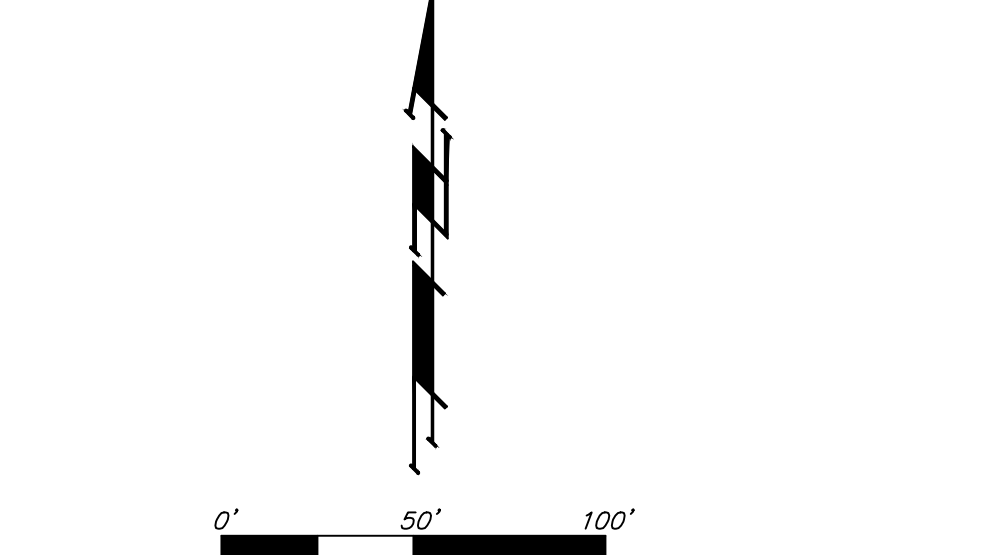
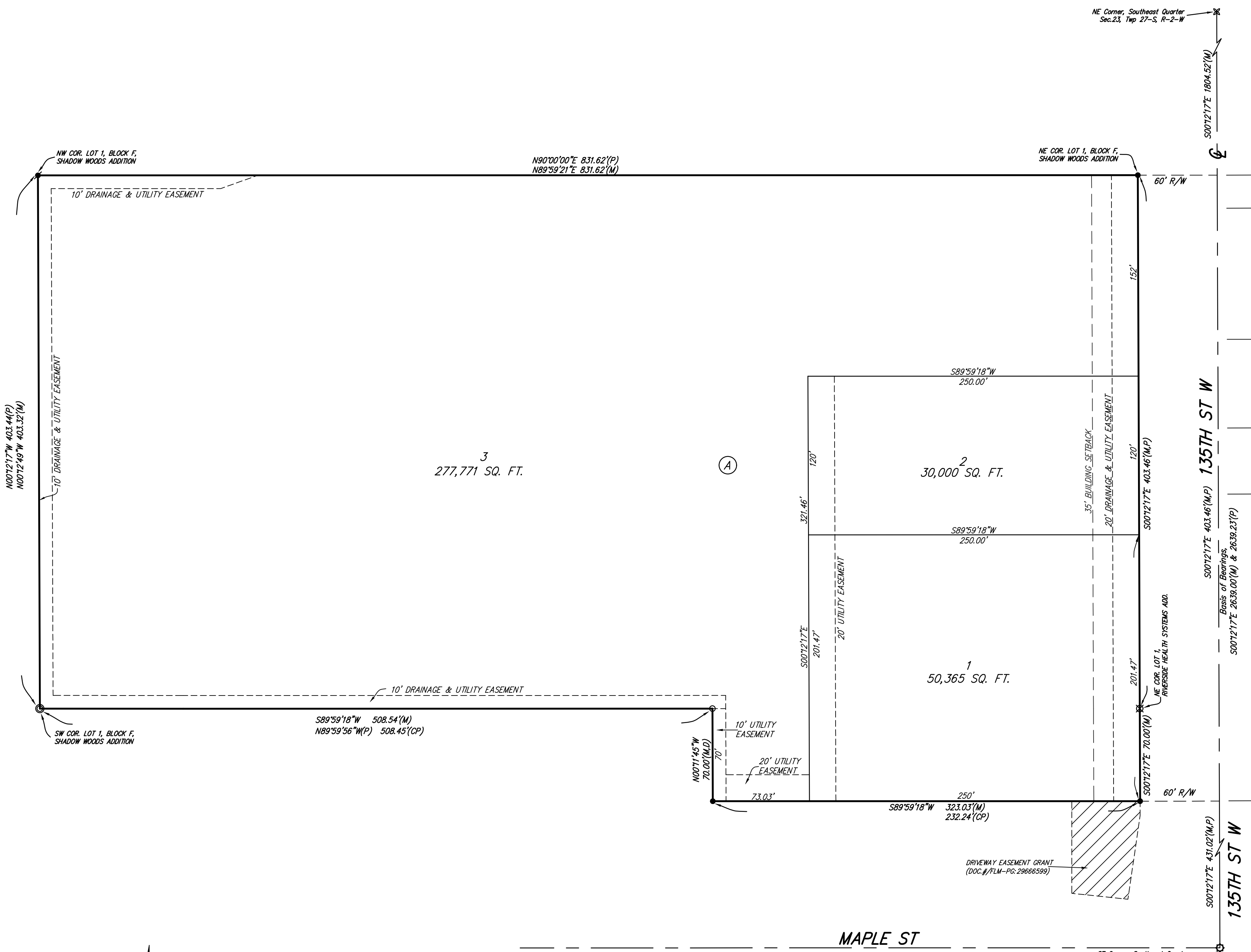
ENGINEERING | SURVEYING | PLANNING | LANDSCAPE ARCHITECTURE

A:\Projects\The Heritage at Auburn Hills Addition\Plat Drawing\Heritage at Auburn Hills_P.dwg RKR

FINAL PLAT

THE HERITAGE AT AUBURN HILLS

AN ADDITION TO WICHITA, SEDGWICK COUNTY, KANSAS



MINIMUM BUILDING PAD ELEVATIONS FOR LOWEST OPENING TO THE STRUCTURES		
LOT	BLOCK	ELEVATION
3	A	1348.0

BENCHMARK:
CROSS CUT EAST EDGE OF SIDEWALK 60'± NORTH OF THE SE CORNER OF LOT 1, BLOCK A. ELEV. = 1342.07 (NAVD88)

- = #4 Baughman Rebar Set
- ⊗ = Chiseled "X" Set
- = #4 Baughman Rebar Found
- ⊙ = #4 Baughman Rebar Found (Green Cap)
- ⊚ = #4 "Savoy" Capped Rebar Found (Blue Cap)
- ⊛ = #4 Rebar Found (Origin Unknown)
- ⊜ = 1/2" Iron Pipe Found (Monument Box)
- ⊝ = #4 "Schwab-Eaton" Capped Rebar Found (Thimble)
- ⊞ = Benchmark

NOTE:
A drainage plan has been developed for this subdivision and is on file in the office of the County Engineer or the Engineer for the appropriate governing body. All drainage easements, right-of-ways, or reserves shall remain of established grades or as modified with the approval of the County Engineer or the Engineer for the appropriate governing body. No obstructions which impede the flow of this drainage system shall be allowed.

State of Kansas) SS
Sedgwick County) We, Baughman Company, P.A., Surveyors in aforesaid county and state do hereby certify that we have surveyed and platted "THE HERITAGE AT AUBURN HILLS"; an Addition to Wichita, Sedgwick County, Kansas and that the accompanying plat is a true and correct exhibit of the property surveyed, described as Lot 1, Block F, Shadow Woods Addition, Wichita, Sedgwick County, Kansas, TOGETHER WITH the north 70.00 feet of Lot 1, EXCEPT the west 47.78 feet, Riverside Health System Addition, Wichita, Sedgwick County, Kansas.

Existing public easements and dedications being vacated by virtue of K.S.A. 12-512b, as amended.
Baughman Company, P.A.

Michael G. Conrey, Surveyor

Know all men by these presents that we, the undersigned, have caused the land in the surveyors certificate to be platted into Lots and a Block to be known as "THE HERITAGE AT AUBURN HILLS", an Addition to Wichita, Sedgwick County, Kansas. The utility easements are hereby granted as indicated for the construction and maintenance of all public utilities. The drainage and utility easements are hereby granted as indicated for drainage purposes and for the construction and maintenance of all public utilities. No signs, light poles, private drainage systems, masonry trash enclosures or other structures shall be located within public utility easements. The drainage easements are hereby granted as indicated for drainage purposes. Access controls shall be as depicted on the face of the plat and are hereby granted to the City of Wichita, Kansas. The permitted opening locations shall be as determined by the City Engineer of the City of Wichita, Kansas. The Minimum Building Pad Elevations for the lowest opening to the structures shall be as indicated on the face of the plat.

Maple 135, LLC,
a Kansas limited liability company

J. Douglas Malone, Manager

State of Kansas) SS
Sedgwick County) The foregoing instrument acknowledged before me, this _____ day of _____, 2017, by J. Douglas Malone, Manager of the Maple 135, LLC, a Kansas limited liability company, on behalf of the limited liability company.

_____, Notary Public

My App't. Exp. _____

We the undersigned holders of a mortgage on the above described property, do hereby consent to this plat of "THE HERITAGE AT AUBURN HILLS"; an Addition to Wichita, Sedgwick County, Kansas.

Legacy Bank
_____, (Title)

State of Kansas) SS
Sedgwick County) The foregoing instrument acknowledged before me, this _____ day of _____, 2017, by _____ of Legacy Bank, on behalf of the bank.

_____, Notary Public

My App't. Exp. _____

This plat of "THE HERITAGE AT AUBURN HILLS", an Addition to Wichita, Sedgwick County, Kansas has been submitted to and approved by the Wichita-Sedgwick County Metropolitan Area Planning Commission, Wichita, Kansas.
Dated this _____ day of _____, 2017.
Wichita-Sedgwick County Metropolitan Area Planning Commission

_____, Chairman
David W. Foster

_____, Secretary
Dale Miller

This plat approved and all dedications shown hereon accepted by the City Council of the City of Wichita, Kansas, this _____ day of _____, 2017.

_____, Mayor, City of Wichita
Jeff Longwell

_____, City Clerk
Karen Sublett

Reviewed in accordance with K.S.A. 58-2005 on this _____ day of _____, 2017.

Tricia L. Robello, L.S. #1246
Deputy County Surveyor
Sedgwick County, Kansas

Entered on transfer record this _____ day of _____, 2017.

_____, County Clerk
Kelly B. Arnold

State of Kansas) SS
Sedgwick County) This is to certify that this plat has been filed for record in the office of the Register of Deeds, this _____ day of _____, 2017 at _____ o'clock _____ M.; and is duly recorded.

_____, Register of Deeds
Tonya Buckingham

THE HERITAGE AT AUBURN HILLS

24 February 2017

Baughman Company, P.A.
315 Ellis St. Wichita, KS 67211 F 316-262-7271 F 316-262-0149
Baughman ENGINEERING | SURVEYING | PLANNING | LANDSCAPE ARCHITECTURE