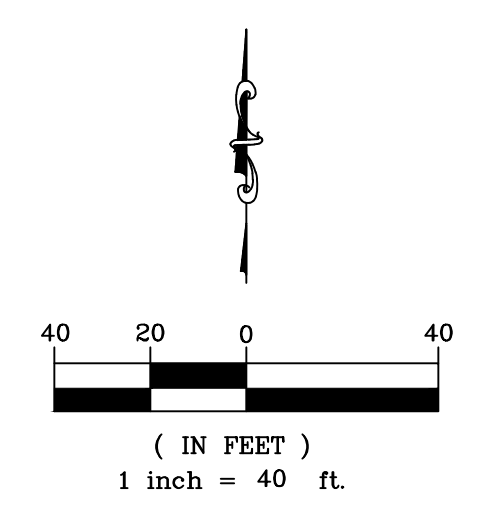
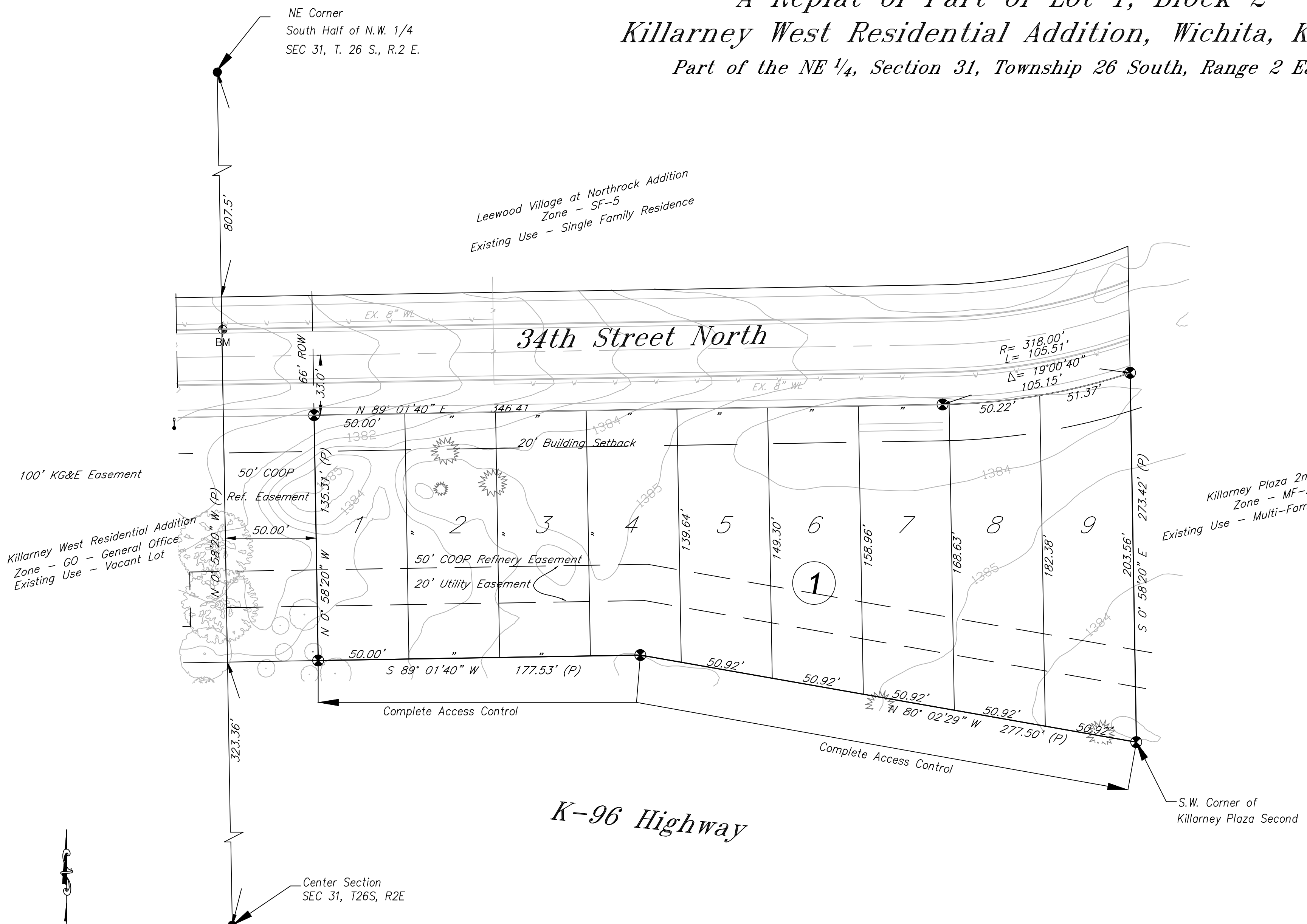


**One-Step Final Plat**  
**Killarney Townhome Addition**  
**A Replat of Part of Lot 1, Block 2**  
**Killarney West Residential Addition, Wichita, Kansas**  
*Part of the NE 1/4, Section 31, Township 26 South, Range 2 East*



- Legend**
- M Measured
  - P Platted
  - ⊙ 5/8" Rebar (set) KEMPA CLS #157
  - Pole
  - ⊕ Benchmark

**Benchmark:**  
 Chisled square cut, front face curb north side of 34th Street N.,  
 near SWS manhole on 1/4 Section Line  
 Elev. 1379.62 (NAVD 88)



State of Kansas )  
 County of Sedgwick ) SS

I, Joanne D. Swanland, a licensed land surveyor of the State of Kansas, do hereby certify that the following described tract of land was surveyed on this 20th day of February, 2017 and the accompanying one-step plat prepared and that all the monuments shown herein actually exist and their positions are correctly shown to the best of my knowledge and belief.

**LEGAL DESCRIPTION**  
 The East 450 feet of Lot 1, Block 2, Killarney West Residential Addition, Sedgwick County, Kansas

All easements and rights-of-way within said tract are hereby vacated by virtue of KSA 12-512b amended.

Joanne D. Swanland, L.S. #1652

State of Kansas )  
 County of Sedgwick ) SS

Know all men by these presents, that we, the undersigned, have caused the land described in the surveyor's certificate to be platted into Lots and a Block to be known as the Killarney Townhome Addition, Wichita, Sedgwick County, Kansas. Any street dedications shown are dedicated to and for the use of the public. The utility easements are hereby granted as indicated for the construction and maintenance of all public utilities. No signs, light poles, private drainage systems, masonry trash enclosures or other structures shall be located within public utility easement. The access controls are hereby granted to the appropriate governing body as shown hereon. A drainage plan has been developed for the plat and that all drainage easements, rights-of-way, or reserves shall remain at established grades or as modified with the approval of the applicable City or County Engineer, and unobstructed to allow for the conveyance of stormwater. And further that the land contained herein is held and shall be conveyed subject to any applicable restrictions, reservations and covenants now on file or hereafter filed in the Office of the Register of Deeds of Sedgwick County, Kansas. All abutter's right of access to and from K-96 is hereby granted to the appropriate governing body as shown on the plat.

By: Hussam Madi date \_\_\_\_\_  
 Islamic Society of Wichita, Inc.

State of Kansas )  
 County of Sedgwick ) SS

This instrument was acknowledged before me on this \_\_\_\_\_ day of \_\_\_\_\_, 2017, Hussam Madi, Islamic Society of Wichita.

Notary Public  
 My Commission Expires: \_\_\_\_\_

State of Kansas )  
 City of Wichita ) SS

This plat of the Killarney Townhome Addition, Wichita, Sedgwick County, Kansas, has been submitted to and approved by the Wichita-Sedgwick County Metropolitan Area Planning Commission, Wichita, Kansas. Dated this \_\_\_\_\_ day of \_\_\_\_\_, 2017.  
 Wichita-Sedgwick County Metropolitan Area Planning Commission.

\_\_\_\_\_  
 David W. Foster, Chair  
 \_\_\_\_\_  
 Dale Miller, Secretary

State of Kansas )  
 City of Wichita ) SS

This plat approved and all dedications shown hereon accepted by the City Council of the City of Wichita, Kansas, this \_\_\_\_\_ day of \_\_\_\_\_, 2017.

At the Direction of the City Council

\_\_\_\_\_  
 Jeff Longwell, Mayor  
 \_\_\_\_\_  
 Karen Sublett, City Clerk

Entered on transfer record this \_\_\_\_\_ day of \_\_\_\_\_, 2017.

\_\_\_\_\_  
 Kelly B. Arnold, County Clerk

State of Kansas )  
 County of Sedgwick ) SS

This is to certify that this plat has been filed for record in the Office of the Register of Deeds this \_\_\_\_\_ day of \_\_\_\_\_, 2017, at \_\_\_\_\_ o'clock \_\_\_\_\_M; and is duly recorded.

\_\_\_\_\_  
 Tonya Buckingham, Register of Deeds

\_\_\_\_\_  
 Judy J. Paget, Deputy

Reviewed in accordance with K.S.A. 58-2005 on this \_\_\_\_\_ day of \_\_\_\_\_, 2017.

\_\_\_\_\_  
 Tricia L. Robello, L.S. #1246  
 Deputy County Surveyor  
 Sedgwick County, Kansas

17026 Killarney Townhome Addition 2/24/2017

**KEMILLER**  
 ENGINEERING PA  
 117 E. Lewis, Wichita, KS 67202 (316)264-0242