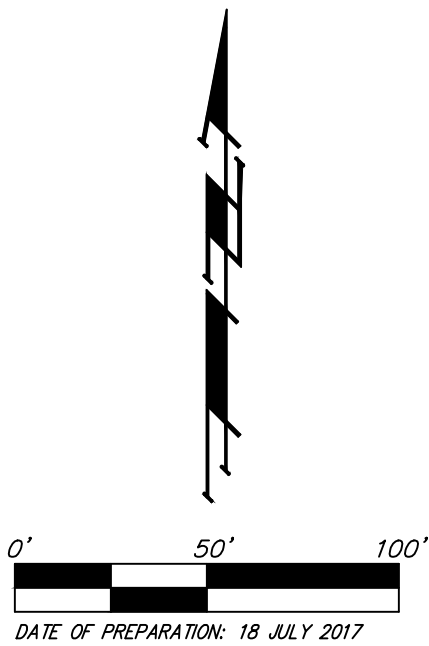
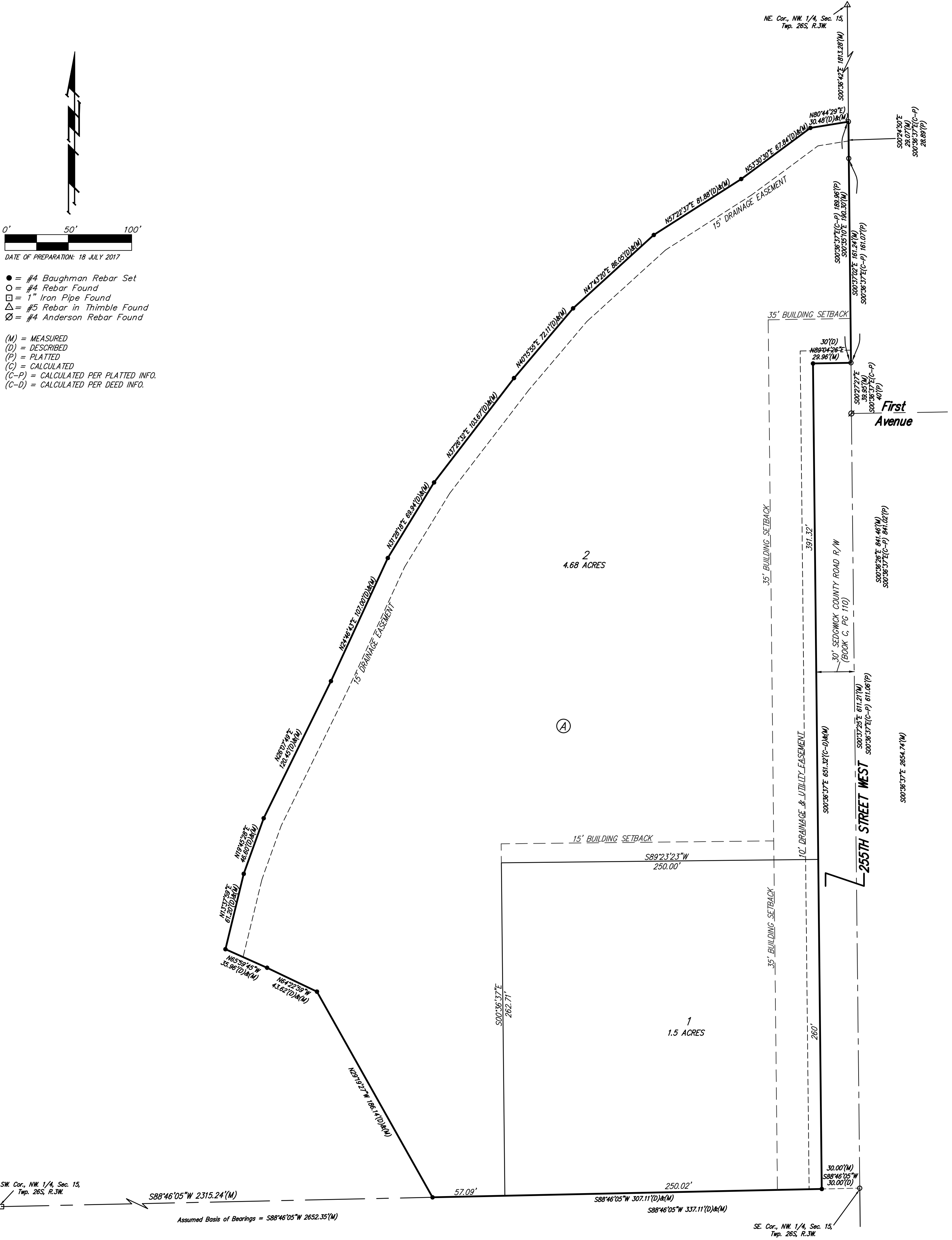


MCCORMICK ACRES SEDGWICK COUNTY, KANSAS



- = #4 Baughman Rebar Set
 - = #4 Rebar Found
 - = 1" Iron Pipe Found
 - △ = #5 Rebar in Thimble Found
 - ⊗ = #4 Anderson Rebar Found
- (M) = MEASURED
 (D) = DESCRIBED
 (P) = PLATTED
 (C) = CALCULATED
 (C-P) = CALCULATED PER PLATTED INFO.
 (C-D) = CALCULATED PER DEED INFO.



State of Kansas) SS
 Sedgwick County) We, Baughman Company, P.A., Surveyors in
 aforesaid county and state do hereby certify that we have surveyed and
 platted "MCCORMICK ACRES", Sedgwick County, Kansas and that the
 accompanying plat is a true and correct exhibit of the property surveyed,
 described as A portion of the South Half of the Northwest Quarter of
 Section 15, Township 26 South, Range 3 West of the 6th P.M., Sedgwick
 County, Kansas, more particularly described as Beginning at the southeast
 corner of said Northwest Quarter; thence S88°46'05"W, along the south
 line of said Northwest Quarter, 337.11 feet; thence N29°19'27"W, 186.14
 feet; thence N64°22'59"W, 43.62 feet; thence N65°59'45"W, 35.96 feet;
 thence N13°37'59"E, 61.20 feet; thence N19°45'28"E, 46.60 feet; thence
 N26°07'49"E, 120.45 feet; thence N24°46'43"E, 107.00 feet; thence
 N31°28'18"E, 69.94 feet; thence N37°26'32"E, 103.67 feet; thence
 N40°15'55"E, 72.11 feet; thence N47°43'20"E, 86.05 feet; thence
 N57°22'37"E, 81.88 feet; thence N53°30'30"E, 67.84 feet; thence
 N80°44'29"E, 30.48 feet to the northernmost northwest corner of Lot 2,
 Block 3, Peltzer and Orth Subdivision a Subdivision of Andale, Kansas,
 Sedgwick County, Kansas, also being a point on the east line of said
 Northwest Quarter; thence S00°36'37"E, along the east line of said
 Northwest Quarter, 841.02 feet to the point of beginning. Subject to
 Road Rights of Way of Record.

Existing public easements and dedications
 being vacated by virtue of K.S.A. 12-512b, as amended.
 _____, Surveyor
 Michael G. Conrey

Know all men by these presents that we,
 the undersigned, have caused the land in the surveyors certificate to be
 platted into Lots, a Block, and Street, to be known as "MCCORMICK
 ACRES", Sedgwick County, Kansas. The drainage and utility easement is
 hereby granted as indicated for drainage purposes and for the construction
 and maintenance of all public utilities. The drainage easement is hereby
 granted as indicated for drainage purposes. No signs, light poles, private
 drainage systems, masonry trash enclosures or other structures shall be
 located within public utility easements unless permitted by the Public
 Works Department of the appropriate governing body. The street is
 hereby dedicated to and for the use of the public.

 Thomas P. McCormick Shannon C. McCormick

State of Kansas) SS
 Sedgwick County) The foregoing instrument acknowledged before
 me, this ____ day of _____, 2017, by Thomas P. McCormick and
 Shannon C. McCormick, as husband and wife.

 Notary Public

My App't. Exp. _____

This plat of "MCCORMICK ACRES", Sedgwick
 County, Kansas has been submitted to and approved by the
 Wichita-Sedgwick County Metropolitan Area Planning Commission, Wichita,
 Kansas.
 Dated this ____ day of _____, 2017.
 Wichita-Sedgwick County Metropolitan Area Planning Commission

 David W. Foster, Chairman

 Dale Miller, Secretary

This plat approved and all dedications
 shown hereon accepted by the Board of Commissioners of
 Sedgwick County, Kansas, this ____ day of _____, 2017.

 Dave Unruh, Chairman

ATTEST: _____, County Clerk
 Kelly B. Arnold

Reviewed in accordance with K.S.A. 58-2005
 on this ____ day of _____, 2017.

 Tricia L. Robella, P.S. #1246
 Deputy County Surveyor
 Sedgwick County, Kansas

Entered on transfer record this ____ day
 of _____, 2017.

 Kelly B. Arnold, County Clerk

State of Kansas) SS
 Sedgwick County) This is to certify that this plat has been
 filed for record in the office of the Register of Deeds, this ____ day
 of _____, 2017 at ____ o'clock ____ M.; and is duly recorded.

 Tonya Buckingham, Register of Deeds

NOTE:
 A drainage plan has been developed for this subdivision and is on file in the
 office of the County Engineer or the Engineer for the appropriate governing
 body. All drainage easements, right-of-ways, or reserves shall remain at
 established grades or as modified with the approval of the County Engineer
 or the Engineer for the appropriate governing body. No obstructions which
 impede the flow of this drainage system shall be allowed.