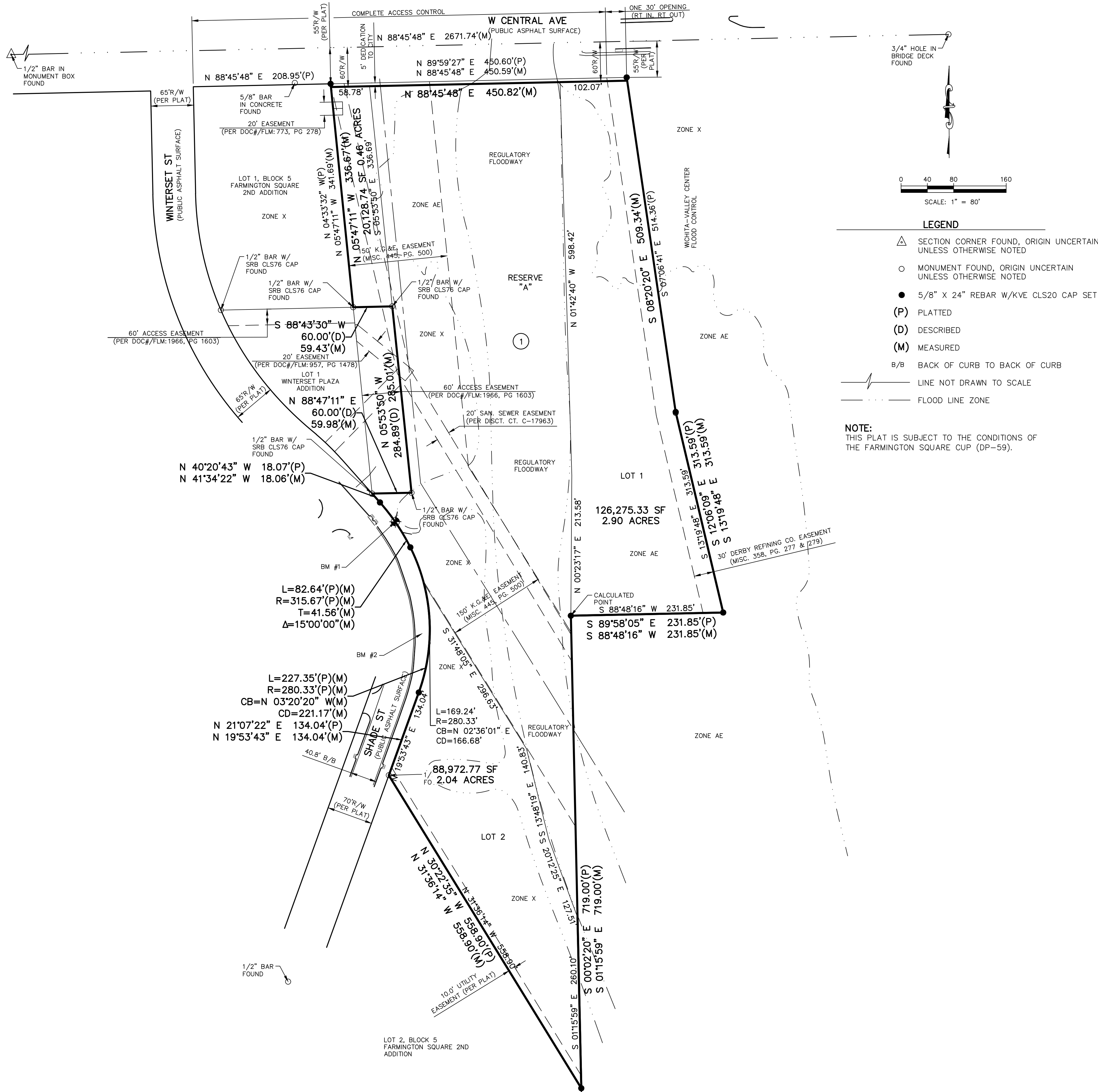


ONE STEP FINAL PLAT OF FARMINGTON SQUARE 3RD ADDITION

A REPLAT OF FARMINGTON SQUARE 2ND ADDITION

WICHITA, SEDGWICK COUNTY, KANSAS



SURVEYOR'S CERTIFICATE

STATE OF KANSAS }
COUNTY OF SEDGWICK } SS

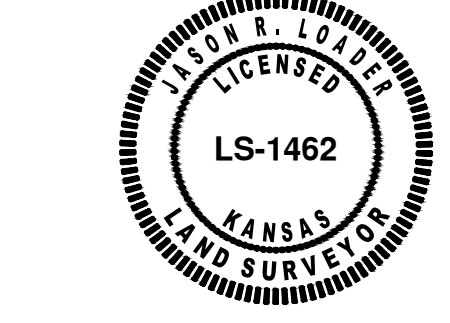
I, JASON R. LOADER (LS), BEING A DULY LICENSED AND REGISTERED LAND SURVEYOR IN THE STATE OF KANSAS, HEREBY CERTIFY THAT THIS MAP OR PLAT AND THE SURVEY ON WHICH IT WAS BASED, WAS MADE IN ACCORDANCE WITH THE CURRENT KANSAS MINIMUM STANDARDS FOR BOUNDARY SURVEYS, WAS MADE BY ME OR UNDER MY DIRECT SUPERVISION, AND IS CORRECT TO THE BEST OF MY BELIEF AND ABILITY.

LEGAL DESCRIPTION

THE FLOODWAY IN BLOCK 5, FARMINGTON SQUARE 2ND ADDITION, WICHITA, SEDGWICK COUNTY, KANSAS, EXCEPT THAT PART DESCRIBED AS BEGINNING AT THE SOUTHEAST CORNER OF LOT 1, WINTERSET PLAZA ADDITION, WICHITA, SEDGWICK COUNTY, KANSAS; THENCE NORTH ALONG THE EAST LINE OF SAID LOT 1, A DISTANCE OF 284.89 FEET; THENCE EAST LONG THE EXTENDED NORTH LINE OF SAID LOT 1, A DISTANCE OF 60 FEET; THENCE SOUTH PARALLEL WITH THE EAST LINE OF SAID LOT 1, A DISTANCE OF 284.89 FEET; THENCE WEST 60 FEET TO THE POINT OF BEGINNING.

ALL EASEMENTS ARE HEREBY VACATED BY VIRTUE OF K.S.A. 12-512(b) AS AMENDED.

DATE OF SURVEY: JUNE 26, 2017



JASON R. LOADER
KANSAS RPS NO. 1462
loaderj@kveng.com

OWNER'S CERTIFICATE

STATE OF KANSAS }
COUNTY OF SEDGWICK } SS

KNOW ALL MEN BY THESE PRESENTS THAT WE, THE UNDERSIGNED, HAVE CAUSED THE LAND DESCRIBED IN THE SURVEYOR'S CERTIFICATE TO BE PLATTED INTO LOTS, A BLOCK AND RESERVE "A" TO BE KNOWN AS "FARMINGTON SQUARE 3RD ADDITION", WICHITA, SEDGWICK COUNTY, KANSAS. OWNERSHIP AND RESPONSIBILITY FOR THE MAINTENANCE OF RESERVE "A" BELONG TO THE OWNERSHIP OF LOT 1, BLOCK 1. NO SIGNS, LIGHT POLES, PRIVATE DRAINAGE SYSTEMS, MASONRY TRASH ENCLOSURES OR OTHER STRUCTURES SHALL BE LOCATED WITHIN PUBLIC UTILITY EASEMENTS UNLESS PERMITTED BY THE PUBLIC WORKS DEPARTMENT OF THE APPROPRIATE GOVERNING BODY. UTILITY EASEMENTS ARE HEREBY GRANTED AS INDICATED FOR THE CONSTRUCTION AND MAINTENANCE OF ALL PUBLIC UTILITIES. UTILITY AND SANITARY SEWER EASEMENTS ARE HEREBY GRANTED FOR THE CONSTRUCTION AND MAINTENANCE OF UTILITY AND SANITARY SEWER LINES. A DRAINAGE PLAN HAS BEEN DEVELOPED FOR THIS PLAT AND ALL DRAINAGE EASEMENTS, RIGHTS-OF-WAY, OR RESERVES SHALL REMAIN AT ESTABLISHED GRADES, OR AS MODIFIED WITH THE APPROVAL OF THE CITY ENGINEER AND UNOBSERVED TO ALLOW FOR THE CONVEYANCE OF STORMWATER. FEMA FLOODPLAIN AND REGULATORY FLOODWAY BOUNDARIES ARE SUBJECT TO PERIODIC CHANGE AND SUCH CHANGE MAY AFFECT THE INTENDED LAND USE WITHIN THE SUBDIVISION.

ACCESS CONTROLS PER CITY OF WICHITA ACCESS MANAGEMENT STANDARDS AND THE APPROVAL OF THE CITY TRAFFIC ENGINEER.

DEDICATED STREET ARE DEDICATED TO THE CITY OF WICHITA FOR THE USE OF THE PUBLIC.

TRAILORS AND MORE

DALE HUTCHINSON, OWNER

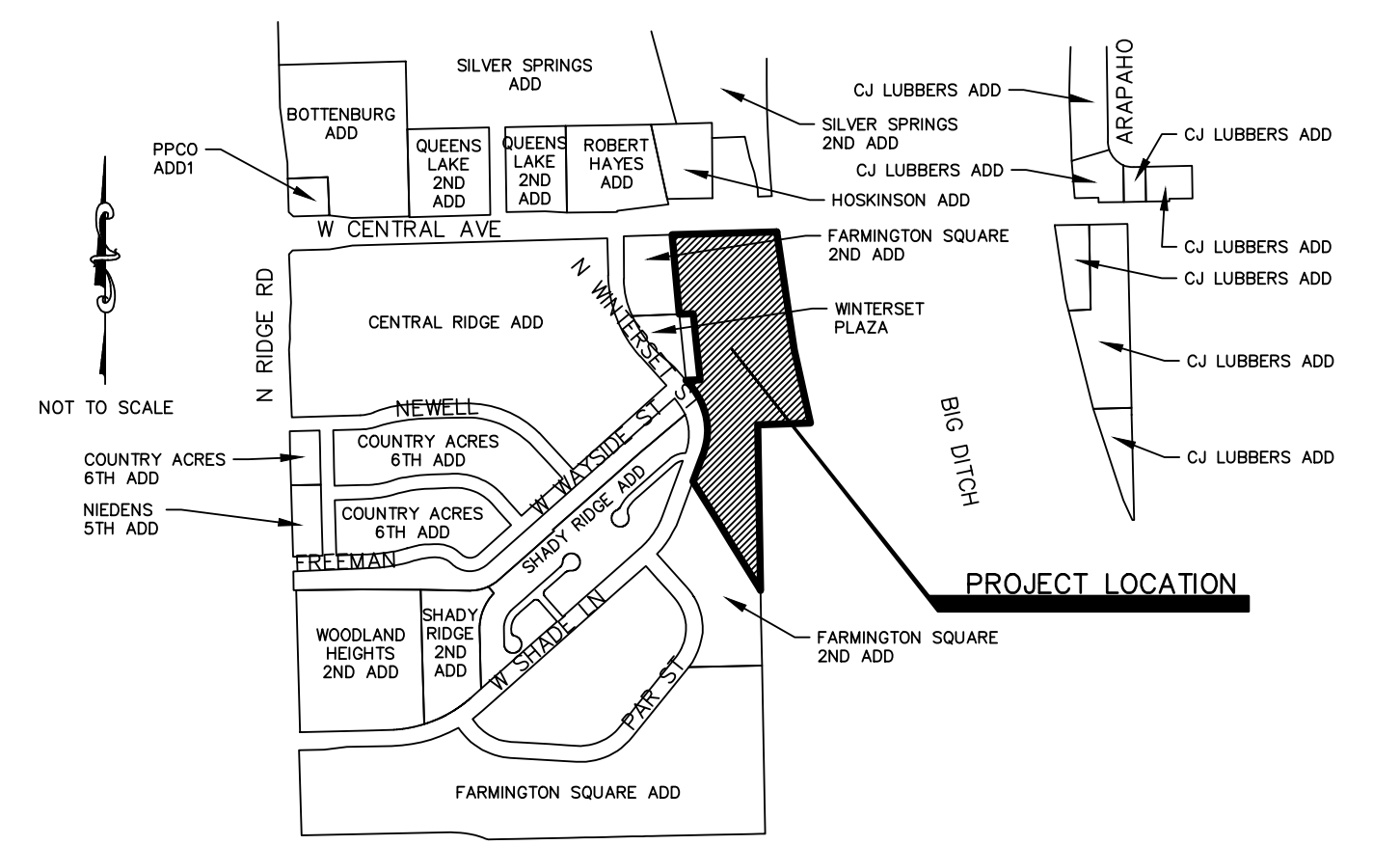
NOTARY CERTIFICATE

STATE OF KANSAS }
COUNTY OF SEDGWICK } SS

THE INSTRUMENT WAS ACKNOWLEDGED BEFORE ME, THIS ____ DAY OF _____, 2017, BY XXXX, MANAGING MEMBER OF XXXX, LLC, A KANSAS LIMITED LIABILITY COMPANY, ON BEHALF OF THE COMPANY.

_____, NOTARY PUBLIC

MY COMMISSION EXPIRES: _____



LOCATION MAP
CITY OF WICHITA, KANSAS

PLANNING COMMISSION CERTIFICATE

STATE OF KANSAS }
COUNTY OF SEDGWICK } SS

THIS PLAT OF "KELLY AND COLEMAN ADDITION", WICHITA, SEDGWICK COUNTY, KANSAS, HAS BEEN SUBMITTED TO AND APPROVED BY THE WICHITA-SEDGWICK COUNTY METROPOLITAN AREA PLANNING COMMISSION, WICHITA, SEDGWICK COUNTY, KANSAS. DATED THIS DAY OF _____, 2017.

WICHITA-SEDGWICK COUNTY METROPOLITAN AREA PLANNING COMMISSION

JOSEPH A. JOHNSON, CHAIRMAN

ATTEST: DALE MILLER, SECRETARY

GOVERNING BODY CERTIFICATE

STATE OF KANSAS }
COUNTY OF SEDGWICK } SS

THIS PLAT APPROVED AND ALL DEDICATIONS SHOWN HEREON, ACCEPTED BY THE CITY COUNCIL OF THE CITY OF WICHITA, KANSAS. DATED THIS ____ DAY OF _____, 2017.

JEFF LONGWELL, MAYOR

ATTEST: KAREN SUBLETT, CITY CLERK

REGISTER OF DEEDS CERTIFICATE

STATE OF KANSAS }
COUNTY OF SEDGWICK } SS

THIS IS TO CERTIFY THAT THIS INSTRUMENT WAS FILED FOR RECORD IN THE REGISTER OF DEEDS OFFICE, AT _____ A.M. ON ____ DAY OF _____, 2017.

TONYA BUCKINGHAM, REGISTER OF DEEDS

JUDY J. PAGET, DEPUTY

DEPUTY COUNTY SURVEYOR CERTIFICATE

THIS PLAT HAS BEEN REVIEWED IN ACCORDANCE WITH K.S.A. 58-2005 ON THIS ____ DAY OF _____, 2017.

TRICIA ROBELLO, P.S. #1246
DEPUTY COUNTY SURVEYOR
SEDGWICK COUNTY, KANSAS

DATUM BENCHMARK:
VERTICAL DATUM IS NAVD 88.

BENCHMARKS:

BM #1: CHISELED SQUARE LOCATED ON NORTH WING WALL RCB ON EAST SIDE OF SHADE ST.
ELEV=13150.15 (NAVD 88)

BM #2: LETTERS "OPEN" ON TOP OF FIRE HYDRANT ON THE EAST SIDE OF SHADE ST..
ELEV=1317.86 (NAVD 88)



KAW VALLEY ENGINEERING, INC.

200 N. EMPORIA, SUITE 100
WICHITA, KANSAS 67202
PH. (316) 440-4304 | FAX (316) 440-4309
wh@kveng.com | www.kveng.com