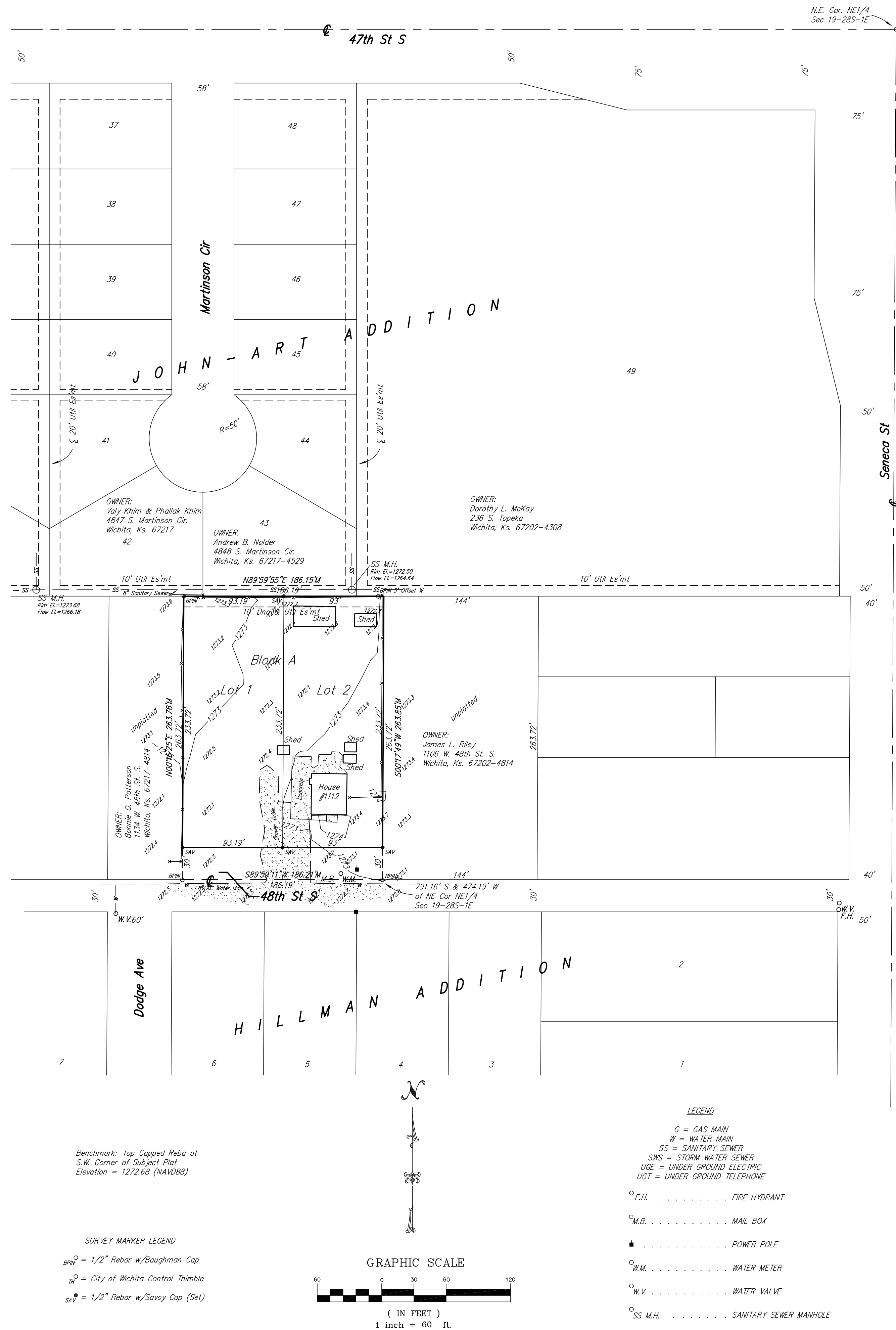


ONE-STEP PLAT HINCKLEY ADDITION

Wichita, Sedgwick County, Kansas



State of Kansas) SS
Sedgwick County)

We, Savoy Company, P.A., Surveyors in aforesaid county and state do hereby certify that, under the supervision of the undersigned, we have surveyed and platted "Hinckley Addition", Wichita, Sedgwick County, Kansas and that the accompanying plat is a true and correct exhibit of the property surveyed, described as follows:

Beginning 527.44 feet South and 330.19 feet West of the N.E. Corner of the NE1/4 of Sec. 19, Twp. 28-S, R-1-E of the 6th P.M., Sedgwick County, Kansas; thence West, 330.19 feet; thence South, 116.86 feet; thence East, 330.19 feet; thence North 116.86 feet to the Point of Beginning, EXCEPT the East 144 feet thereof.

AND
Beginning 644.30 feet South and 330.19 feet West of the N.E. Corner of the NE1/4 of Sec. 19, Twp. 28-S, R-1-E of the 6th P.M., Sedgwick County, Kansas; thence West, 330.19 feet; thence South, 146.86 feet; thence East, 330.19 feet; thence North 146.86 feet to the Point of Beginning, EXCEPT the East 144 feet thereof.

All Public easements and dedications being vacated by virtue of K.S.A. 12-512b as amended.

Savoy Company, P.A.

Date _____
Mark A. Savoy, PS #788 Surveyor

Know all men by these presents that We, the undersigned, have caused the land described in the surveyor's certificate to be platted into Lots, a Block and a Street to be known as "Hinckley Addition", Wichita, Sedgwick County, Kansas. The street is hereby dedicated to and for the use of the public. The drainage and utility easement is hereby granted for drainage purposes and the construction and maintenance of all public utilities. No signs, light poles, private drainage systems, masonry trash enclosures or other structures shall be located within public utility easements unless permitted by the Public Works Department of the appropriate governing body. A drainage plan has been developed for this plat and all drainage easements, rights-of-way and reserves shall remain at established grades, or as modified with the approval of the City or County Engineer and unobstructed to allow for the conveyance of storm water.

Donald W. Hinckley

State of Kansas) SS
Sedgwick County)

The foregoing instrument acknowledged before me, this _____ day of _____, 2017, by Donald W. Hinckley, a single person.

Notary Public

My App't. Exp. _____

We, the undersigned, holders of a mortgage on a portion of the above described property, do hereby consent to this plat of "Hinckley Addition", Wichita, Sedgwick County, Kansas.

Kanza Bank

State of Kansas) SS
Sedgwick County)

The foregoing instrument acknowledged before me, this _____ day of _____, 2017, by _____, _____ of Kanza Bank.

Notary Public

My App't. Exp. _____

This plat of "Hinckley Addition", Wichita, Sedgwick County, Kansas, has been submitted to and approved by the Wichita-Sedgwick County Metropolitan Area Planning Commission, Wichita, Sedgwick County, Kansas.

Dated this _____ day of _____, 201__.

Wichita-Sedgwick County Metropolitan Area Planning Commission

Joseph A. Johnson Chairman

Dale Miller Secretary

This plat approved and all dedications shown hereon, accepted by the City Council of the City of Wichita, Kansas, this _____ day of _____, 201__.

Jeff Longwell Mayor

Karen Sublett City Clerk

Reviewed in accordance with K.S.A. 58-2005 on this _____ day of _____, 201__.

Tricia L. Robello, PS #1246 Deputy County Surveyor
Sedgwick County Kansas

Entered on transfer record this _____ day of _____, 201__.

Kelly B. Arnold County Clerk

State of Kansas) SS
Sedgwick County)

This is to certify that this plat has been filed for record in the office of the Register of Deeds, this _____ day of _____, 201__, at _____ o'clock _____ M. and is duly recorded.

Tonya Buckingham Register of Deeds

Judy J. Paget Deputy

