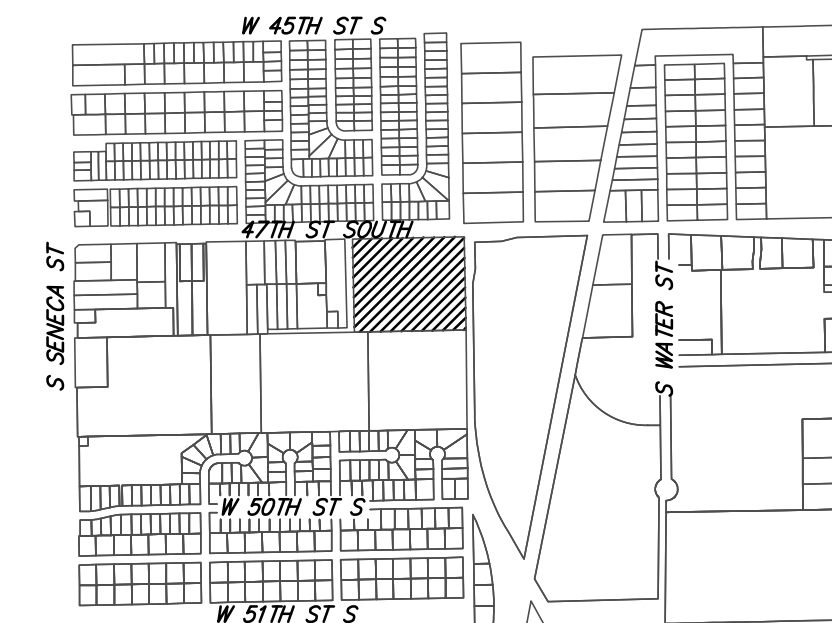
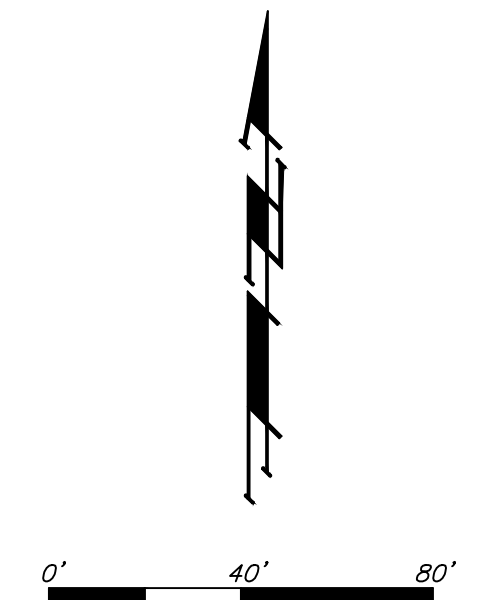
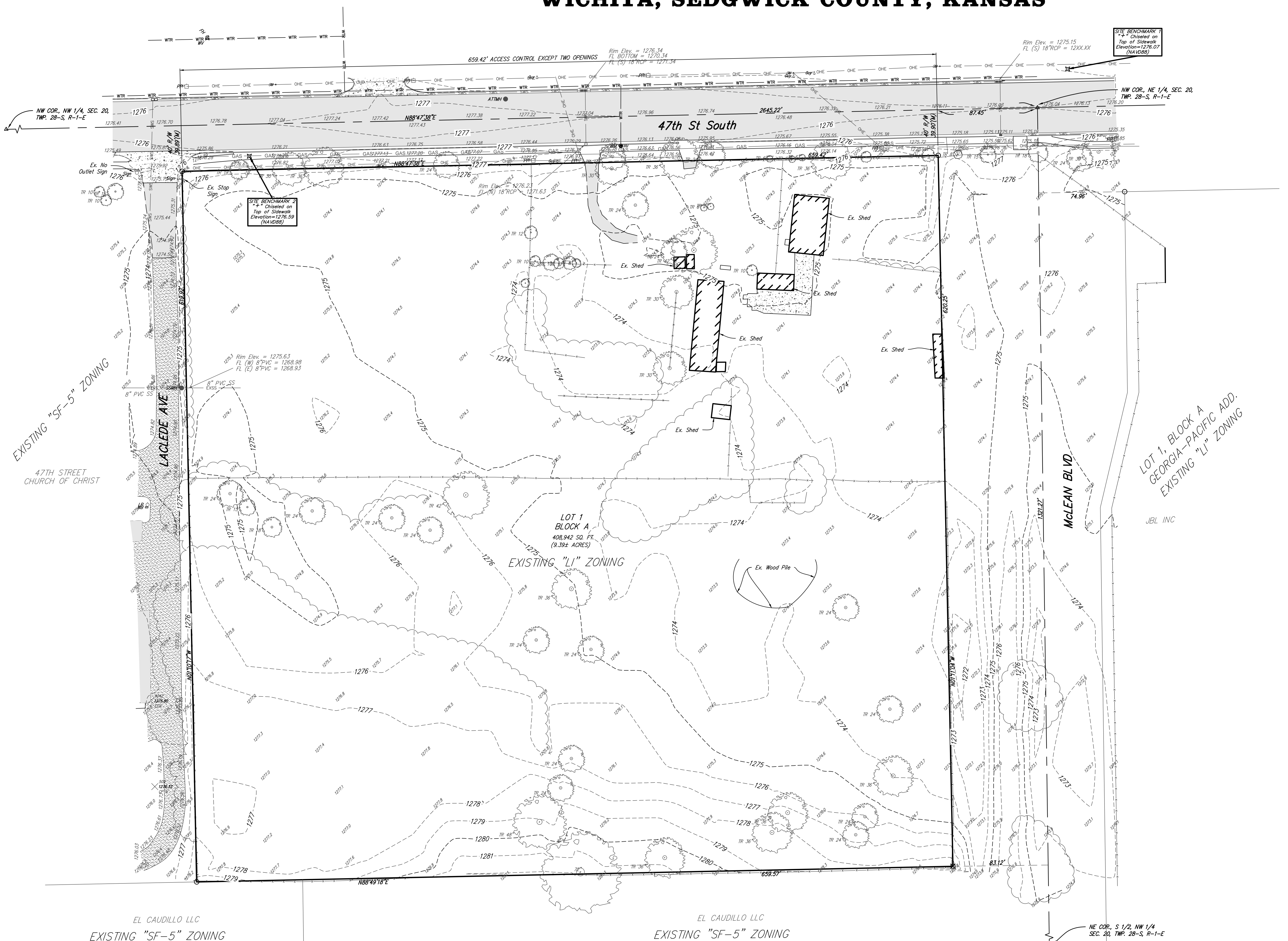


PRELIMINARY PLAT  
**LANGE 4TH ADDITION**  
 WICHITA, SEDGWICK COUNTY, KANSAS



VICINITY MAP  
 SEC. 20, T28S, R1E



DATE OF PREPARATION: 8 NOVEMBER 2018  
 DATE OF TOPOGRAPHY: 22 OCTOBER 2018  
 CONTOUR INTERVALS = 1 FOOT (CONTOURS PROVIDED BY SEDGWICK COUNTY)

OWNER/DEVELOPER:

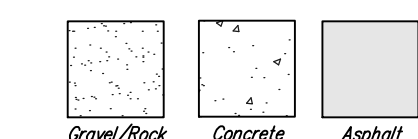
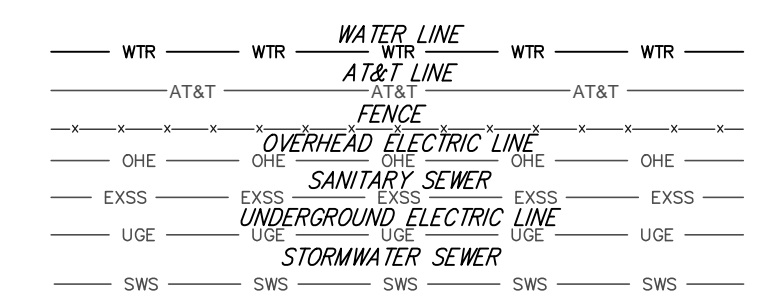
TCRS, LLC  
 ATTN: JEFF LANGE  
 4340 S. WEST STREET  
 WICHITA, KS 67217

LEGAL DESCRIPTION:  
 THE EAST 10 ACRES OF THAT PART OF THE NORTH HALF OF THE NORTH HALF OF THE NORTHWEST QUARTER OF SECTION 20, TOWNSHIP 28 SOUTH, RANGE 1 EAST OF THE 6TH PRINCIPAL MERIDIAN, SEDGWICK COUNTY, KANSAS LYING WEST OF THE RIGHT-OF-WAY OF THE MIDLAND VALLEY RAILROAD.

BENCHMARK-1:  
 "+ CUT IN SIDEWALK, 33' N. & 27' E. OF NW COR., NE 1/4, SEC. 20, TWP. 28-S, R-1-E. ELEV. = 1276.07 NAVD88

BENCHMARK-2:  
 "+ CUT IN SIDEWALK, 59' E. & 12' N. OF NW COR., LOT 1, BLOCK A LANGE 4TH ADDITION. ELEV. = 1276.59 NAVD88

- = 1/2" IRON (FOUND)
- ⊗ = 1/2" REBAR OVER STONE (FOUND)
- ▲ = R4 BAR FOUND
- = R5 BAR CALCULATED
- (M) = MEASURED
- (D) = DESCRIBED
- (P) = PLATTED
- (C) = CALCULATED
- AT&T ● = A.T.&T. Telephone Manhole
- DI □ = Drop Inlet
- FH ○ = Fire Hydrant
- GU \* = Guard Post(Ballard)
- = Guy Anchor
- LP ○ = Light Pole
- MB □ = Mail Box
- MW ○ = Monitoring Well
- PP □ = Power Pole
- Sign □ = Sign
- SSMH ● = Sanitary Sewer Manhole
- = Tree
- WM ● = Water Meter
- WV → = Water Valve



EL CAUDILLO LLC  
 EXISTING "SF-5" ZONING

EL CAUDILLO LLC  
 EXISTING "SF-5" ZONING

NE COR., S 1/2, NW 1/4  
 SEC. 20, TWP. 28-S, R-1-E

**LANGE 4TH ADDITION**  
 9 NOV 2018

**Baughman** Baughman Company, P.A.  
 315 Ellis St. Wichita, KS 67211 P 316-262-7271 F 316-262-0149  
 ENGINEERING | SURVEYING | PLANNING | LANDSCAPE ARCHITECTURE

E:\Projects\Lange\_4th and Broadway\Plat\Drawings\Lange\_4th Add P.dwg