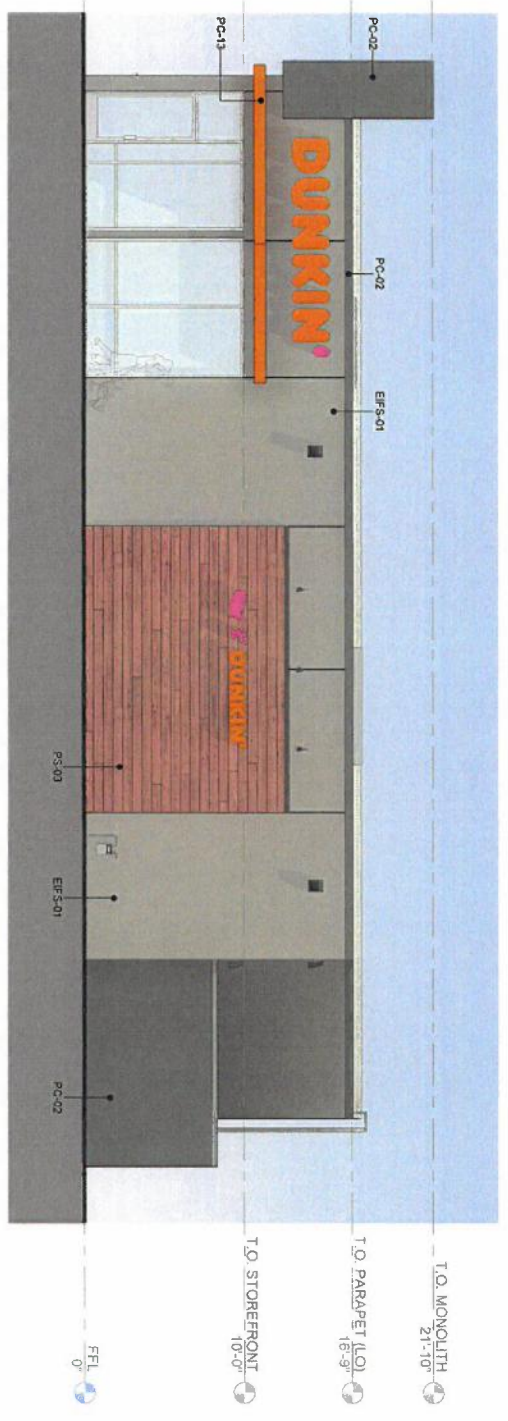


**EXTERIOR FINISH LEGEND**

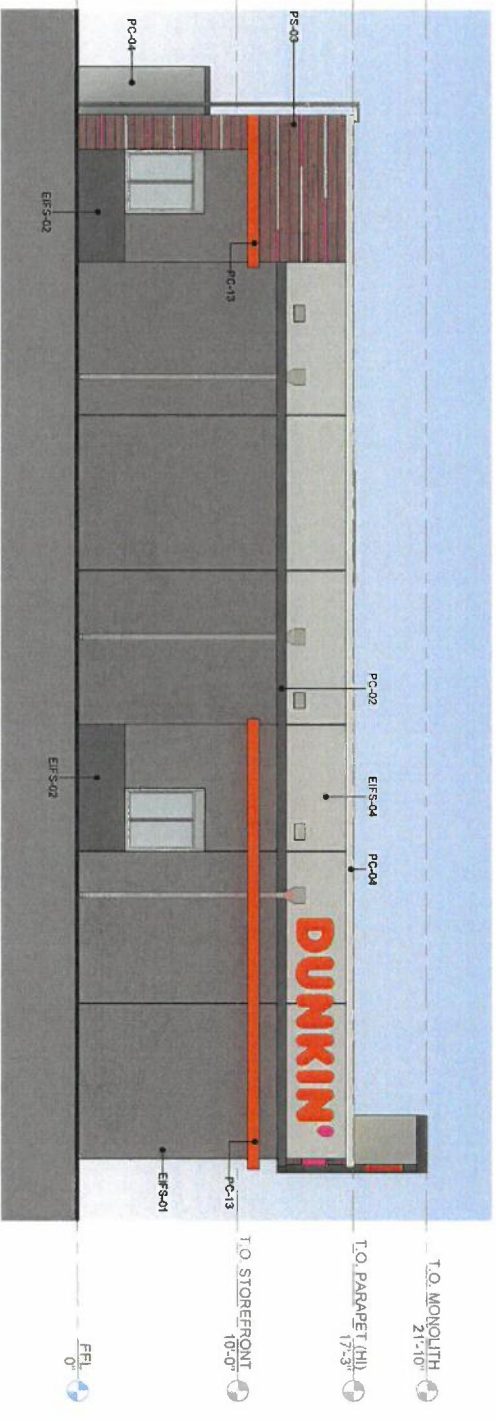
- EIFS-01 EXTERIOR INSULATION & FINISH SYSTEM (GRAY FINISH)
  - COLOR: HDP - DUDO 38 2738 ST
  - MATCH: MATCH TO SHERWIN WILLIAMS
  - ALT: SW709 GAUNTLET GRAY
- EIFS-02 EXTERIOR INSULATION & FINISH SYSTEM (CHARCOAL FINISH)
  - TEXTURE: SANDPBLE FINE
  - COLOR: DUDO 312738S
  - MATCH: MATCH TO SHERWIN WILLIAMS
  - ALT: SW709 GAUNTLET GRAY
- EIFS-04 EXTERIOR INSULATION & FINISH SYSTEM (WHITE FINISH)
  - TEXTURE: SANDPBLE FINE
  - MATCH: MATCH TO SHERWIN WILLIAMS
  - ALT: SW709 NEBULOUS WHITE
- PC-01 EXTERIOR METAL PAINTED COATING (GRAY FINISH)
  - COLOR: SW709 NEBULOUS WHITE
- PC-02 EXTERIOR METAL PAINTED COATING (CHARCOAL FINISH)
  - COLOR: SW709 GAUNTLET GRAY
- PC-04 EXTERIOR METAL PAINTED COATING (WHITE FINISH)
  - COLOR: SHERWIN WILLIAMS
- PC-12 EXTERIOR METAL PAINTED COATING (DARK PINK)
  - COLOR: SW709 NEBULOUS WHITE
- PC-13 EXTERIOR METAL PAINTED COATING (DORANGE)
  - COLOR: COLOR MATCH PMS 219C
- PS-03 EXTERIOR METAL PAINTED COATING (WOOD FINISH)
  - PRODUCT: RUSTIC SERIES
  - PATTERN: PLANK
  - SIZE: 8 1/4" X 1 1/2" X 5/16" W/ 6" EXPOSURE
  - NOTE: FASTENERS TO MATCH WOOD FINISH

*CVP DP-327*

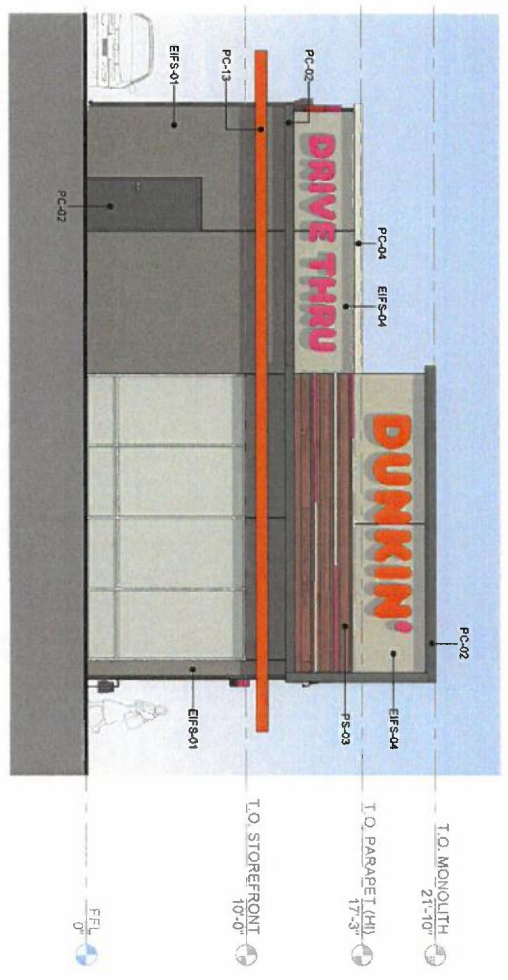
**APPROVAL**  
*R. Morgan*  
 7-13-2021



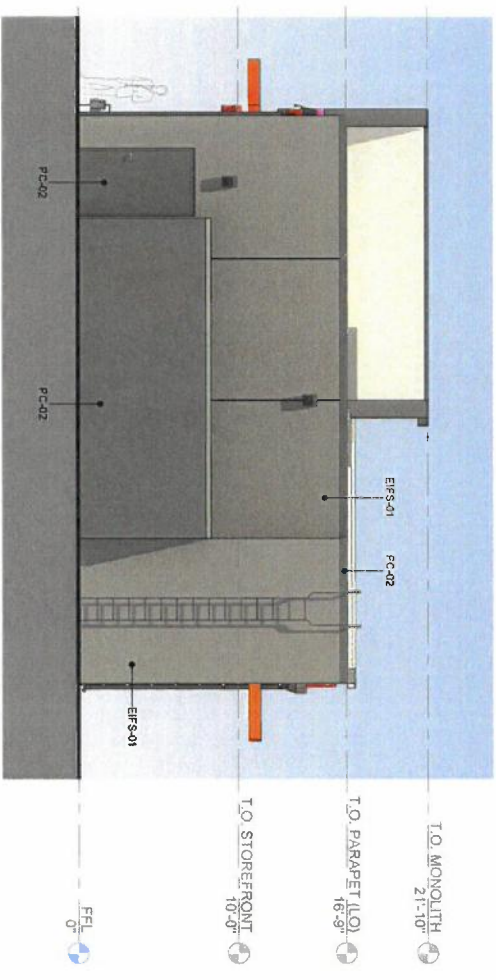
① SOUTH ELEVATION  
 3/16" = 1'-0"



③ NORTH ELEVATION  
 3/16" = 1'-0"



② WEST ELEVATION  
 3/16" = 1'-0"



④ EAST ELEVATION  
 3/16" = 1'-0"

KEEP THIS AREA CLEAR FOR  
 ELECTION APPROVAL STAMP  
 (WICHITA/DONOVAN COUNTY ONLY)

**CLARKITECTURE**  
 BUILDINGS THAT MEAN BUSINESS

CLARKITECTURE.NET  
 (316) 502-4472

**PROJECT INFO**

CLIENT: MOUNTAIN PASS INVESTMENTS, LLC  
 PROJECT: DUNKIN' - MARIETTA, KS - 20TH & MAIZE (PC# 981155)  
 ADDRESS: TBD (NEAR 20TH ST & MAIZE RD)  
 WICHITA, KS 67205  
 PROJECT NO: 295

**MAIN CONTACT**

CHRISTOPHER CLARK, AIA, NCARB  
 701 E KELLOGG DR, STE 830  
 WICHITA, KS 67201  
 (316) 302-4472  
 cchris@clarkitec.com

**DESIGN TEAM**

ARCHITECTURE: CLARKITECTURE, 701 E KELLOGG DR, STE 830, WICHITA, KS 67201, (316) 302-4472  
 STRUCTURAL: MRC ENGINEERING, WICHITA, KS 67208, (316) 824-8800  
 MECHANICAL: BC ENGINEERS, 5720 REEDER ST, SHAWNEE, KS 66203, (313) 282-1772  
 ELECTRICAL: SHAWNEE ELECTRIC, 5720 REEDER ST, SHAWNEE, KS 66203, (313) 282-1772  
 CIVIL & LANDSCAPE: KAW VALLEY ENGINEERING, 2001 N EMPORIA AVE, STE 100, WICHITA, KS 67222, (316) 440-4304

**SHEET INFO**

ISSUE DATE: 05/18/21  
 ISSUED FOR: DESIGN REVIEW

NO.	DESCRIPTION	DATE

PROFESSIONAL'S SEAL:



COLOR ELEVATIONS

A35.0