

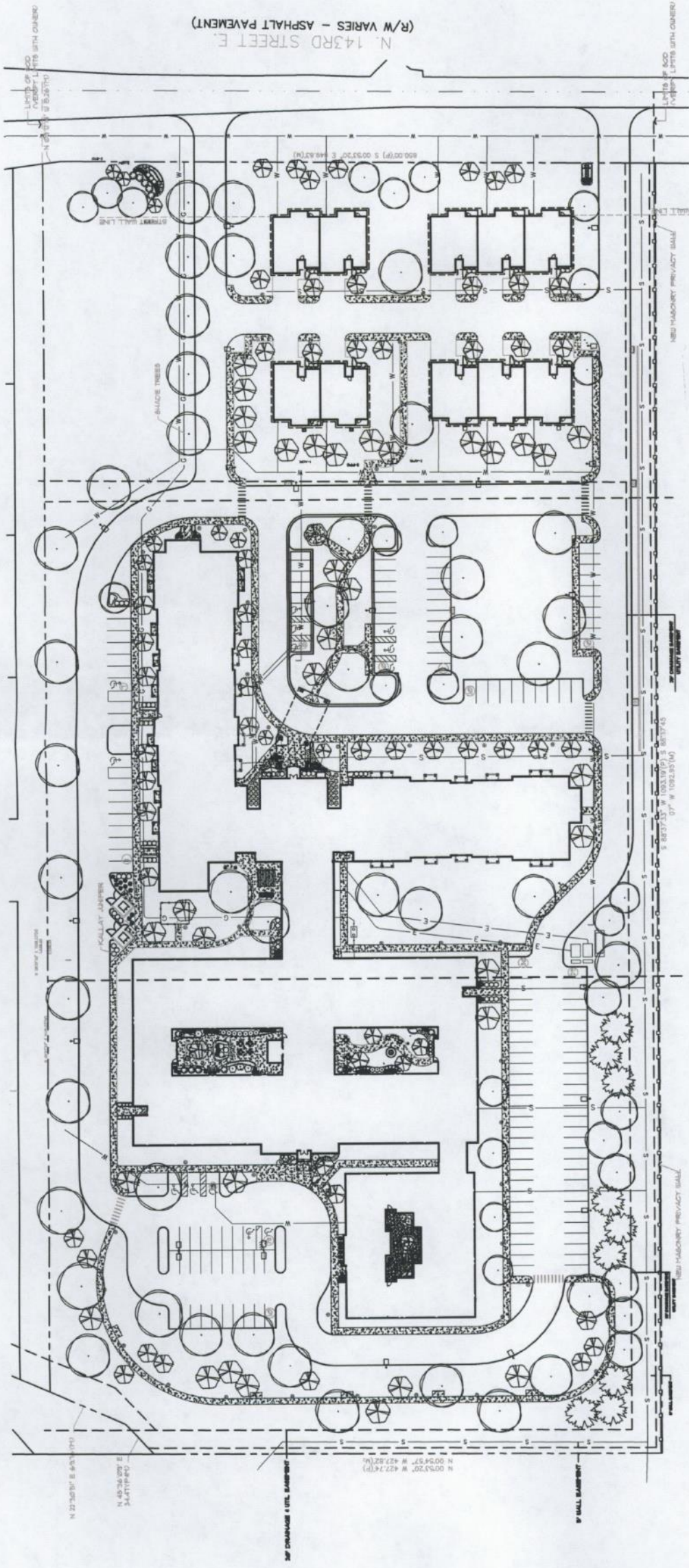


THE RUSHWOOD
 143RD ST. E. & 21ST ST. N.
 WICHITA, SEDGWICK COUNTY, KANSAS 67230
 STARK WILSON DUNCAN ARCHITECTS INC
 315 NICHOLS RD, STE 228 - KANSAS CITY, MO 64112 - T 816.531.1888 F 816.531.1978



OVERALL PLANTING PLAN
 ISSUE DATE: AUGUST 10, 2021
 REVISIONS:

PROJECT NO.: 2014
L1.0

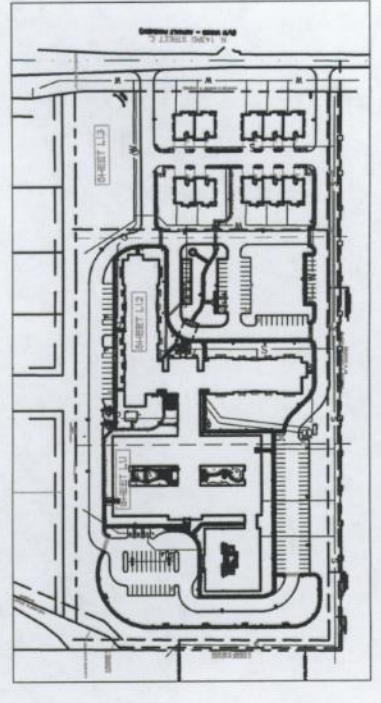


LANDSCAPE PLAN SITE PLANTING PLAN
 1" = 40'-0"

APPROVED 8/31/21 BY *NS*
 DP 302

LANDSCAPE CODE CALCULATIONS

LANDSCAPED STREET YARD REQUIRED: Landscaped Street Yard Required: Land Street = 50 LF x 20' (40' R. Factor) = 10,000 Sq Ft. required street yard Landscaped Street Yard Provided: 13,362 Total Sq Ft.	PARKING LOT SCREENING AND LANDSCAPING: None required. Parking Lot is more than 50' beyond the property line abutting the street. Parking Lot Trees Required: 100 total trees: 20' x 15' or eq. 8 trees required 8 trees provided (up to one-half of req'd street yard trees may be used to satisfy pkg. lot trees. One-half of 20' x 10' trees)
STREET TREES REQUIRED: Required: 10,300 - 1400 = 208 or eq. 21 trees required Provided: 9 shade trees + 5 evergreen trees + 10 ornamental trees + 20 shrubs = 21 shade trees	BUFFERS REQUIRED: South Property Line = 1003 - 40 = 213 or eq. 28 trees required + solid screening wall Provided: Solid masonry wall = 19 trees (due to utility easement)

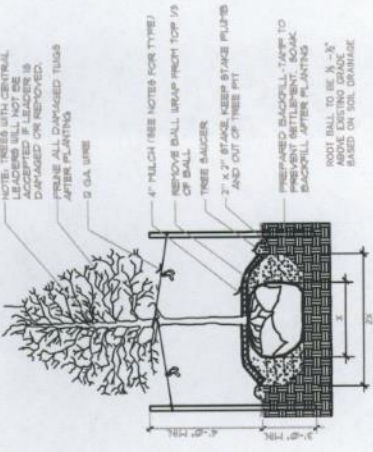


SITE KEY - not to scale

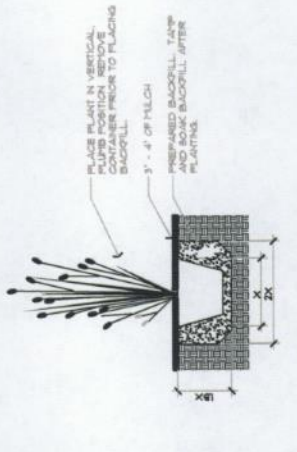
1 2 3 4 5 6 7 8 9 10 11 12

GENERAL PLANTING NOTES

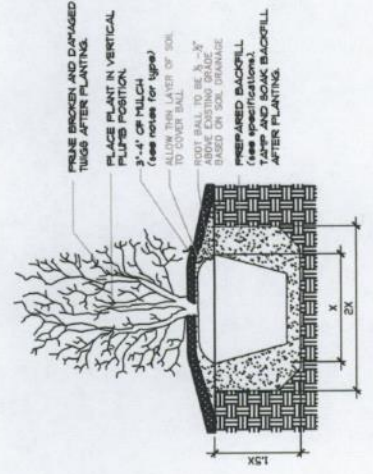
1. PRIOR TO BEGINNING ANY WORK ON THE SITE, THE CONTRACTOR SHALL CONTACT THE OFFICE OF THE ARCHITECT FOR SPECIFIC INSTRUCTIONS RELEVANT TO THE PROJECT.
2. LANDSCAPE CONTRACTOR SHALL PROVIDE ALL LABOR MATERIALS AND SERVICE NECESSARY TO FURNISH AND INSTALL PLANTINGS AS SPECIFIED HEREIN AND AS SHOWN ON THESE PLANS.
3. NO MATERIAL SUBSTITUTIONS SHALL BE MADE WITHOUT THE OWNER'S APPROVAL. ALTERNATE MATERIALS OF EQUAL SIZE AND CHARACTER THAT ARE CONSIDERED BY SPECIFIED PLANT MATERIAL LIST AS BEING NECESSARY.
4. ALL PLANT LOCATIONS ARE APPROXIMATE, ADJUST AS NECESSARY TO AVOID CONFLICTS.
5. QUANTITIES OF MATERIALS SHOWN ON THE PLANTING PLAN TAKE PRECEDENCE OVER QUANTITIES SHOWN ON ALL OTHER PLANS. LANDSCAPE CONTRACTOR SHALL BE RESPONSIBLE FOR OBTAINING ALL MATERIALS FOR THE PLANTING PLAN.
6. CONTRACTOR SHALL LOCATE ALL UTILITIES BEFORE WORK. LOCATE BURIED UTILITY LOCATIONS BY CONTACTING THE LOCAL UTILITY LOCATION SERVICE. THE CONTRACTOR WILL BE RESPONSIBLE FOR THE REPAIR OF ANY DAMAGE HE MAY CAUSE TO UTILITIES.
7. GENERAL CONTRACTOR SHALL PROVIDE 4" OF TOPSOIL AT ALL BOD AND PLANTING AREAS. GRADES SHALL BE ADJUSTED FOR SOIL THICKNESS. ALL FRESH GRAVING SHALL BE FERTILIZED BY THE LANDSCAPE CONTRACTOR.
8. SOIL TYPES SHALL BE LOCATED AND LABELED FULL PAGES UNLESS OTHERWISE NOTED.
9. CONTRACTOR SHALL LOCATE ALL UTILITIES BEFORE WORK. LOCATE BURIED UTILITY LOCATIONS BY CONTACTING THE LOCAL UTILITY LOCATION SERVICE. THE CONTRACTOR WILL BE RESPONSIBLE FOR THE REPAIR OF ANY DAMAGE HE MAY CAUSE TO UTILITIES.
10. FERTILIZE ALL PLANTS WITH 4-8-4 COMMERICAL FERTILIZER AS DIRECTED BY INSTRUCTIONS ON LABEL.
11. AFTER PLANTING IS COMPLETED REPAIR INJURED TO ALL PLANTS AS REQUIRED. LEAVE AROUND OF PLANTS TO A MINIMUM NECESSARY TO REMOVE DEAD OR DAMAGED PLANTS. LEAVE CUTS CLEAN, LEAVING NO STUBS.
12. ALL LANDSCAPE EDGINGS IS TO BE 4" X 1/2" PAINTED STEEL EDGING. PLACE EDGING FLUSH WITH GRADE.
13. INSTALL 1/2" RIVER ROCK IN COURTYARD PLANTING BEDS AS NOTED ON PLAN WITH A POROUS GEOTEXTILE BED BARRIER FABRIC UNDERNEATH. SAMPLES OF RIVER ROCK SHALL BE PROVIDED TO THE ARCHITECT FOR APPROVAL. THE FABRIC IS TO BE 2' TO 4' WIDE.
14. PLANTING BEDS NEARBY RIVER ROCK ARE TO BE FRESH OF WEEDS AND GRASS. TREAT BEDS WITH A PRE-EMERGENT HERBICIDE PRIOR TO TELLING TO ACCEPT. APPLY IN ACCORDANCE WITH STANDARD TRADE PRACTICE.
15. INSTALL BARRIERS HORIZONTAL HELIX IN ALL PLANT BEDS AND TREE SAUCERS UNLESS NOTED OTHERWISE ON PLAN (IN COUNTRY AREAS). PLACE 3'-4" OF HELIX IN ALL PLANT BEDS AND TREE SAUCERS.
16. PLANTING BEDS RECEIVING FLOODS ARE TO BE FREE OF WEEDS AND GRASS. TREAT BEDS WITH A PRE-EMERGENT HERBICIDE PRIOR TO TELLING TO ACCEPT. APPLY IN ACCORDANCE WITH STANDARD TRADE PRACTICE.
17. THE CONTRACTOR SHALL PROVIDE ALL WATER, WATERING DEVICES AND LABOR NEEDED TO IRRIGATE PLANT MATERIALS UNTIL ACCEPTANCE OF THE PROJECT'S PLANT MATERIALS. THE CONTRACTOR SHALL SUPPLY ENOUGH WATER TO MAINTAIN THE PLANTS' HEALTHY CONDITION.
18. IN ESTABLISH TAMP IN AREAS DISTURBED BY GRADING OR UTILITY TRENCHING IN THE SOIL.
19. REESTABLISH TAMP IN ALL AREAS DISTURBED BY THE CONSTRUCTION PROCESS AND WITHIN THE LIMITS OF DISTURBANCE BY BED, SOIL OR PLANNED PLANTING AREAS AS NOTED ON PLAN.
20. REPORT ANY DISCREPANCIES IN THE PLANTING PLAN TO THE OWNER'S REPRESENTATIVE PRIOR TO STARTING CONSTRUCTION.
21. TAMP AND PLANTING BEDS ARE TO BE IRRIGATED BY AN AUTOMATIC SPRINKLER SYSTEM.
22. SEE L&P FOR PLANTING DETAILS.



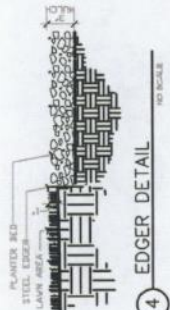
1 TREE PLANTING DETAIL
NO SCALE



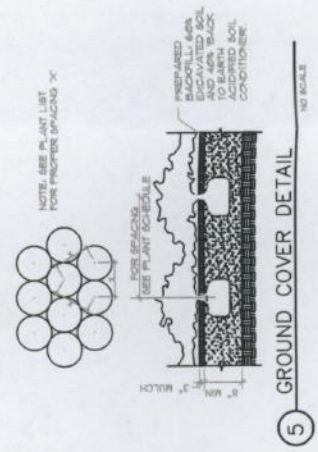
3 ORNAMENTAL GRASS PLANTING
NO SCALE



2 SHRUB PLANTING DETAIL
NO SCALE



4 EDGER DETAIL
NO SCALE



5 GROUND COVER DETAIL
NO SCALE