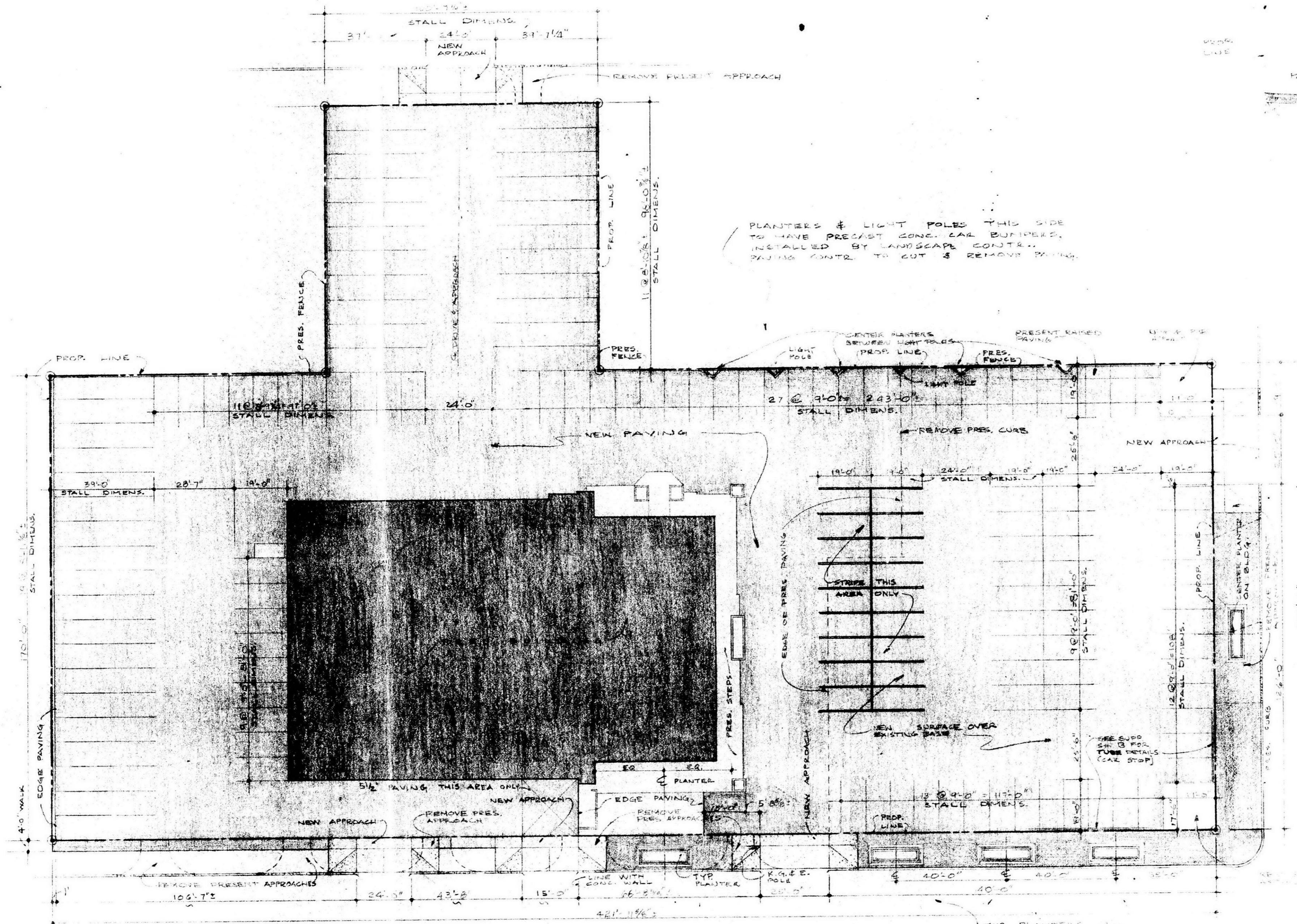


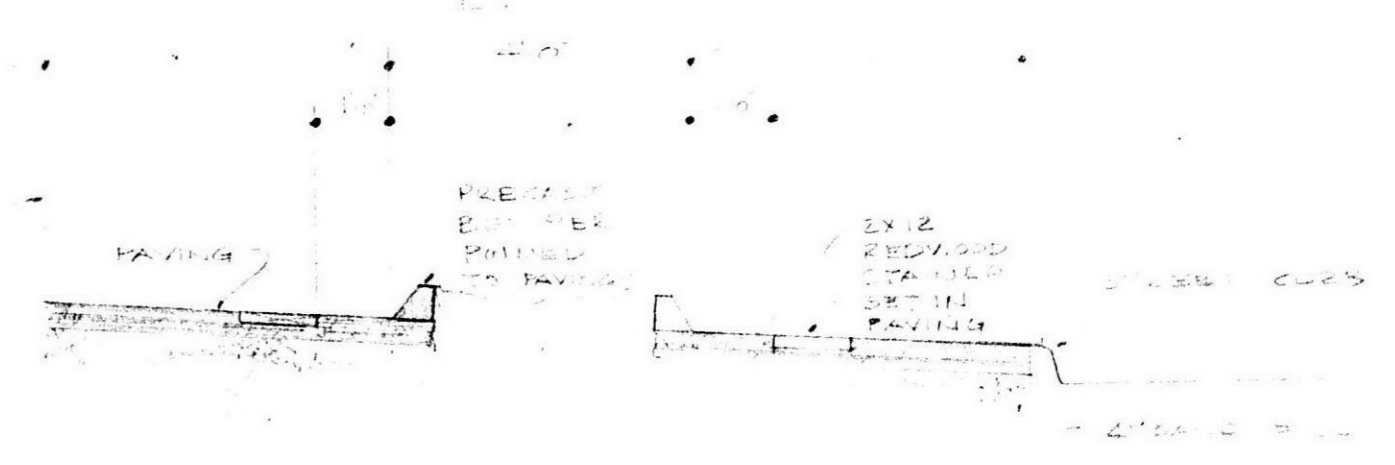
BZA 2-78

REVISIONS



C A L H O U N

X P A V I N G P L A N 1"=20'



P SECT THROUGH PLANTERS
KYLE 2-23-78

PLANTERS & LIGHT POLES THIS SIDE TO HAVE PRECAST CONC. CAR BUMPERS, INSTALLED BY LANDSCAPE CONTR. PAVING CONTR. TO CUT & REMOVE PAVING.

K E L L O G G

Y N O T E S

- 1. SEE PLAN FOR ALL DIMENSIONS AND NOTES.
- 2. ALL PAVING TO BE DONE AT ONCE.
- 3. ALL APPROACHES TO BE 5% GRADE.
- 4. ALL PLANTERS TO BE 24" HIGH.
- 5. ALL LIGHT POLES TO BE 12" DIA.
- 6. ALL CURBS TO BE 24" HIGH.
- 7. ALL PAVING TO BE DONE AT ONCE.
- 8. ALL APPROACHES TO BE 5% GRADE.
- 9. ALL PLANTERS TO BE 24" HIGH.
- 10. ALL LIGHT POLES TO BE 12" DIA.
- 11. ALL CURBS TO BE 24" HIGH.

REVISIONS
R1 12-1-77
R2 12-1-77
R3 12-1-77
R4 12-1-77
R5 12-1-77
R6 12-1-77
R7 12-1-77
R8 12-1-77
R9 12-1-77
R10 12-1-77
R11 12-1-77
R12 12-1-77
R13 12-1-77
R14 12-1-77
R15 12-1-77
R16 12-1-77
R17 12-1-77
R18 12-1-77
R19 12-1-77
R20 12-1-77
R21 12-1-77
R22 12-1-77
R23 12-1-77
R24 12-1-77
R25 12-1-77
R26 12-1-77
R27 12-1-77
R28 12-1-77
R29 12-1-77
R30 12-1-77
R31 12-1-77
R32 12-1-77
R33 12-1-77
R34 12-1-77
R35 12-1-77
R36 12-1-77
R37 12-1-77
R38 12-1-77
R39 12-1-77
R40 12-1-77
R41 12-1-77
R42 12-1-77
R43 12-1-77
R44 12-1-77
R45 12-1-77
R46 12-1-77
R47 12-1-77
R48 12-1-77
R49 12-1-77
R50 12-1-77
R51 12-1-77
R52 12-1-77
R53 12-1-77
R54 12-1-77
R55 12-1-77
R56 12-1-77
R57 12-1-77
R58 12-1-77
R59 12-1-77
R60 12-1-77
R61 12-1-77
R62 12-1-77
R63 12-1-77
R64 12-1-77
R65 12-1-77
R66 12-1-77
R67 12-1-77
R68 12-1-77
R69 12-1-77
R70 12-1-77
R71 12-1-77
R72 12-1-77
R73 12-1-77
R74 12-1-77
R75 12-1-77
R76 12-1-77
R77 12-1-77
R78 12-1-77
R79 12-1-77
R80 12-1-77
R81 12-1-77
R82 12-1-77
R83 12-1-77
R84 12-1-77
R85 12-1-77
R86 12-1-77
R87 12-1-77
R88 12-1-77
R89 12-1-77
R90 12-1-77
R91 12-1-77
R92 12-1-77
R93 12-1-77
R94 12-1-77
R95 12-1-77
R96 12-1-77
R97 12-1-77
R98 12-1-77
R99 12-1-77
R100 12-1-77

M. J. Keller (BZA)
Feb-9-78

PRINTS

623

PAVING PLAN

Alan M. McManis Architects
City of Phoenix Building
Wichita, Kansas 67201-1111

E D D Y ' S T O Y O T A

FILMED FROM THE BEST AVAILABLE COPY.....

