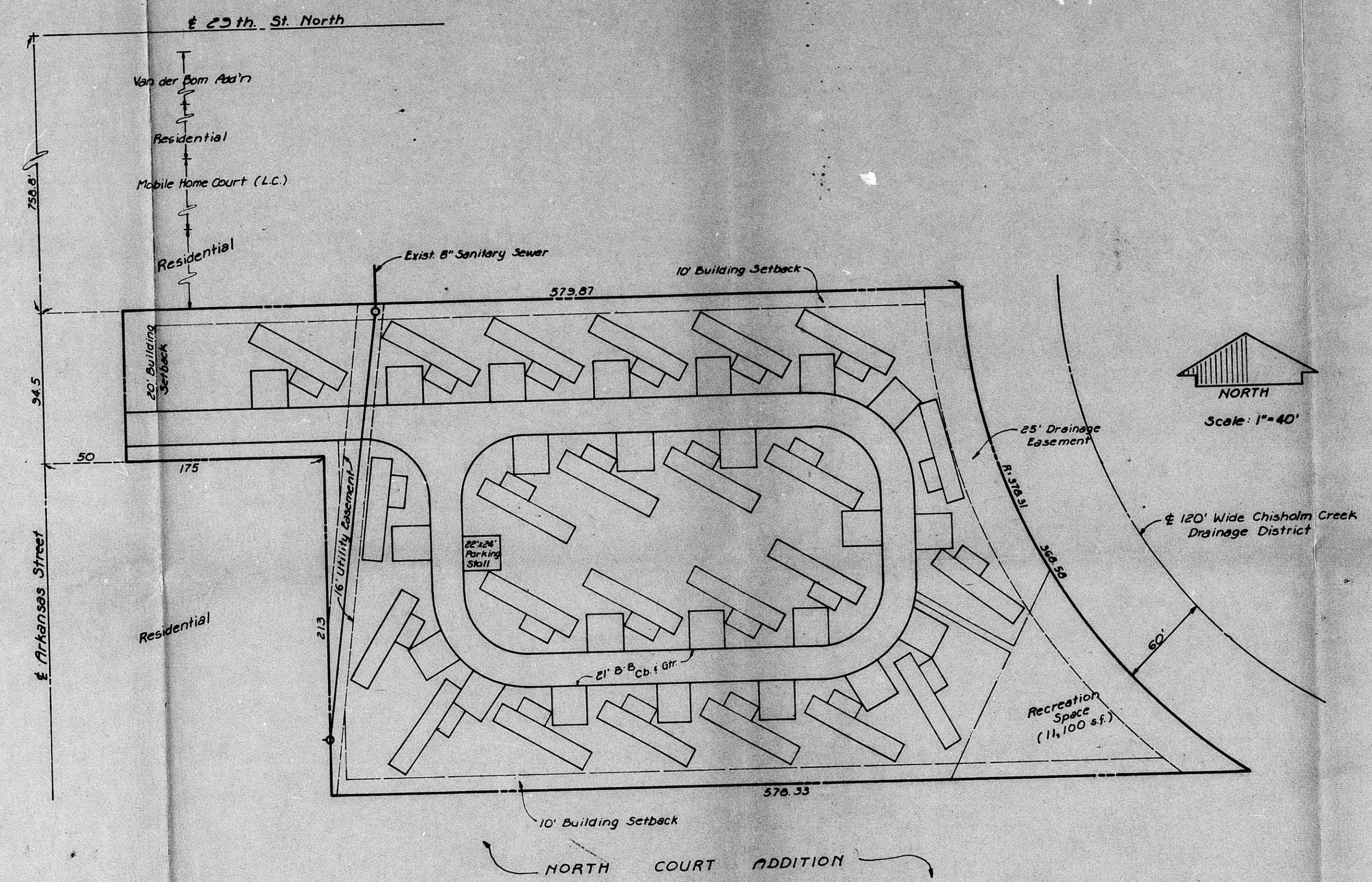


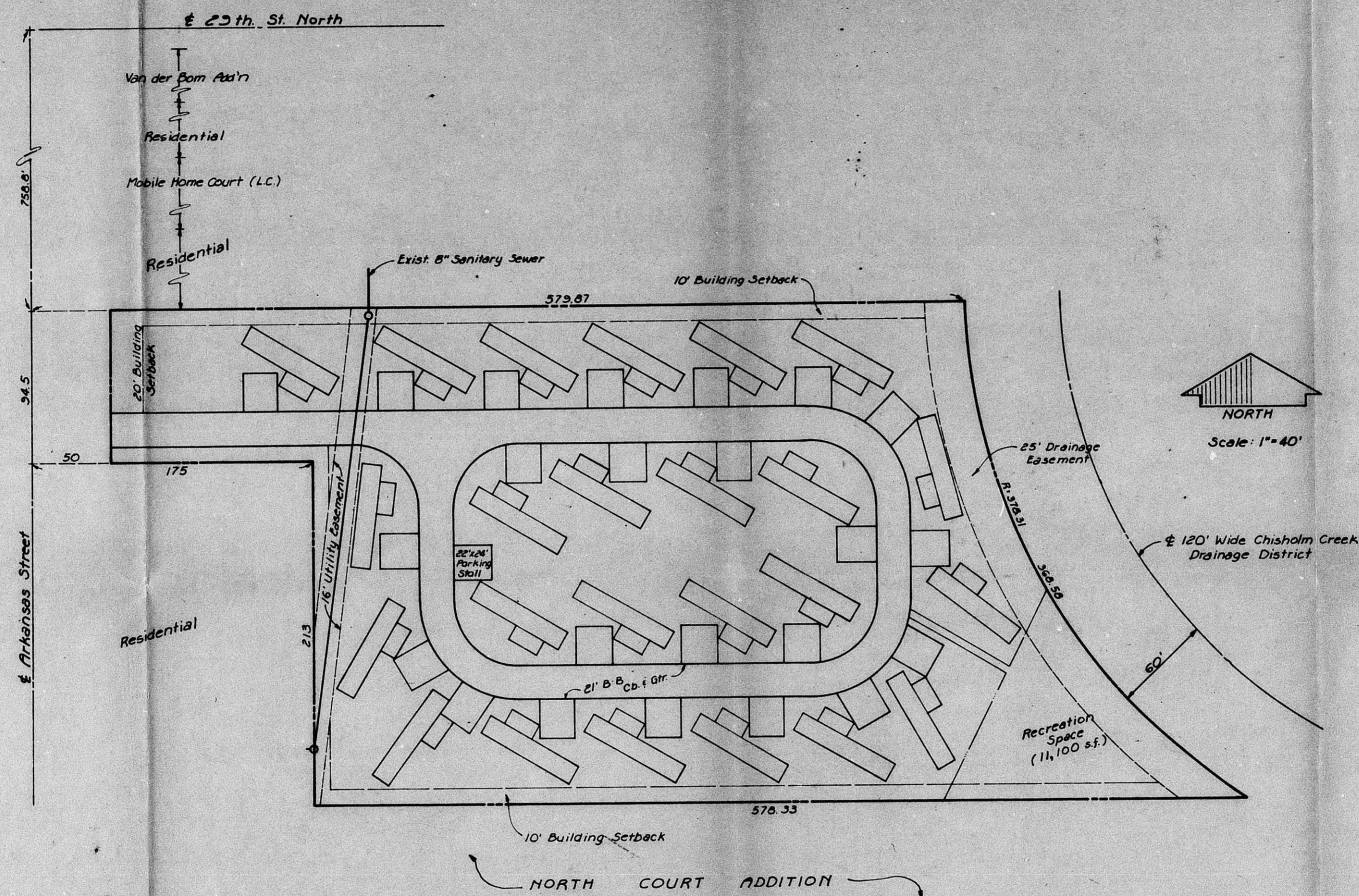
BZA 3-81



Sketch Plan  
**Barclay Mobile Home Park**  
 Wichita, Sedgwick County, Kansas  
 1980

BZA 3-81

**SITE DATA:**  
 Area - 3.5 Acres  
 24 Mobile Home Units  
 Density - 6.9 Units per Acre  
 Streets - 21' Back to Back  
 Parking - 2 Spaces per Unit  
 Recreational Open Space - 11,100 sf.  
 Front Yard Setback - 20' Minimum  
 Side Yard Setback - 10' Minimum  
 Rear Yard Setback - 25' (Required 25' Drainage Easmt.)  
 Mobile Home Separation - 20' Minimum  
 Patios - 200 sq. ft. Minimum



Sketch Plan  
**Barclay Mobile Home Park**

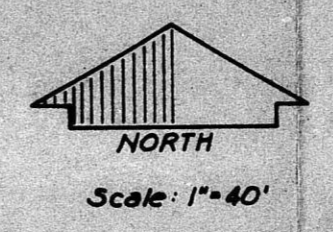
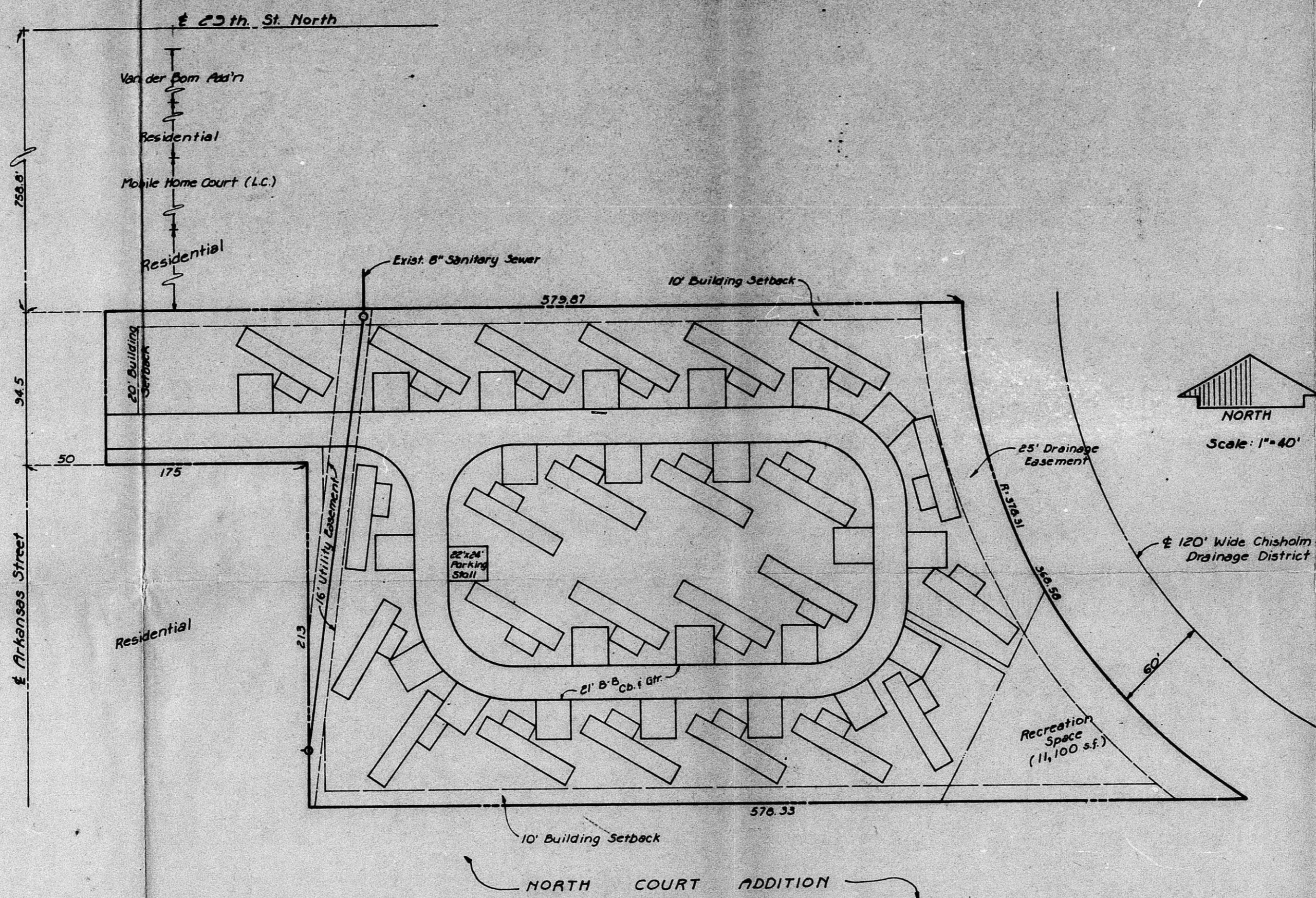
Wichita, Sedgwick County, Kansas

1980

BZA 3-91

**SITE DATA:**

- Area - 3.5 Acres
- 24 Mobile Home Units
- Density - 6.9 Units per Acre
- Streets - 21' Back to Back
- Parking - 2 Spaces per Unit
- Recreational Open Space - 11,100 s.f.
- Front Yard Setback - 20' Minimum
- Side Yard Setback - 10' Minimum
- Rear Yard Setback - 25' (Required 25' Drainage Easmt.)
- Mobile Home Separation - 20' Minimum
- Patios - 200 s.f. Minimum



Sketch Plan  
**Barclay Mobile Home Park**  
 Wichita, Sedgwick County, Kansas  
 1980  
**BZA 3-81**

**SITE DATA:**  
 Area - 3.5 Acres  
 24 Mobile Home Units  
 Density - 6.9 Units per Acre  
 Streets - 21' Back to Back  
 Parking - 2 Spaces per Unit  
 Recreational Open Space - 11,100 s.f.  
 Front Yard Setback - 20' Minimum  
 Side Yard Setback - 10' Minimum  
 Rear Yard Setback - 25' (Required 25' Drainage E'smt.)  
 Mobile Home Separation - 20' Minimum  
 Patios - 200 s.f. Minimum