

W. F. FARHA 2ND. ADDITION
19,434 SQ. FT.



B - ZONING

L.C.

13TH. STREET

'R.B.' ZONING | 'L.C.' ZONING

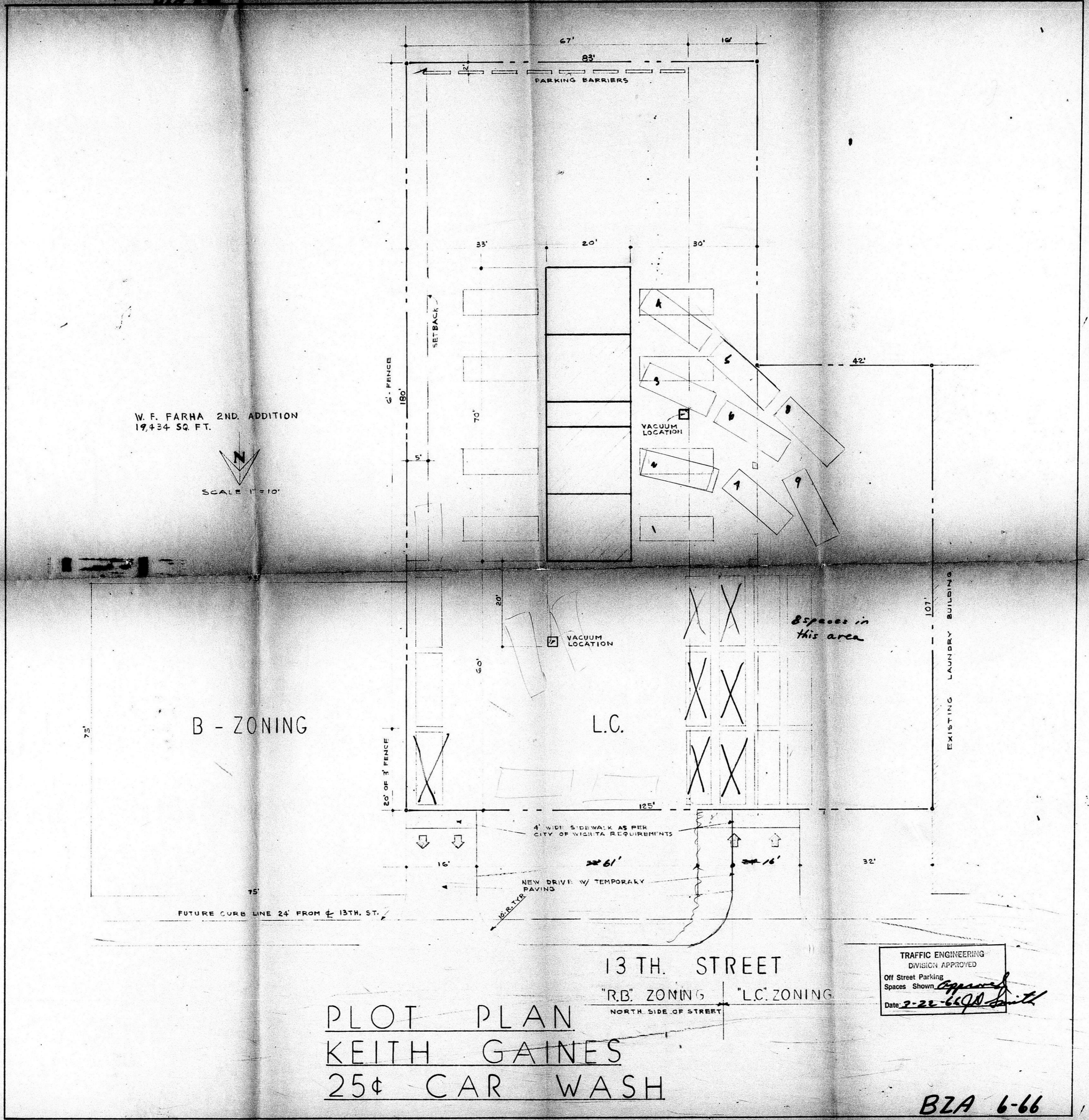
PLOT PLAN
KEITH GAINES
25¢ CAR WASH

APPROVED AS NOTED
By CITY ENGINEER OF WICHITA
Sanitary Sewers
Storm Sewers
Driveway Approaches *OK*
James H. Hady
2/23/66

TRAFFIC ENGINEERING
DIVISION APPROVED
Off-Street Parking
Spaces Shown *Approved*
Date *2-23-66*

B7A6-16

W. F. FARHA 2ND. ADDITION
17,434 SQ. FT.



B - ZONING

L.C.

13TH. STREET
"R.B." ZONING | "L.C." ZONING
NORTH SIDE OF STREET

PLOT PLAN
KEITH GAINES
25¢ CAR WASH

TRAFFIC ENGINEERING
DIVISION APPROVED
Off Street Parking
Spaces Shown
Date 2-22-66

BZA 6-66

FILMED FROM THE BEST
AVAILABLE COPY