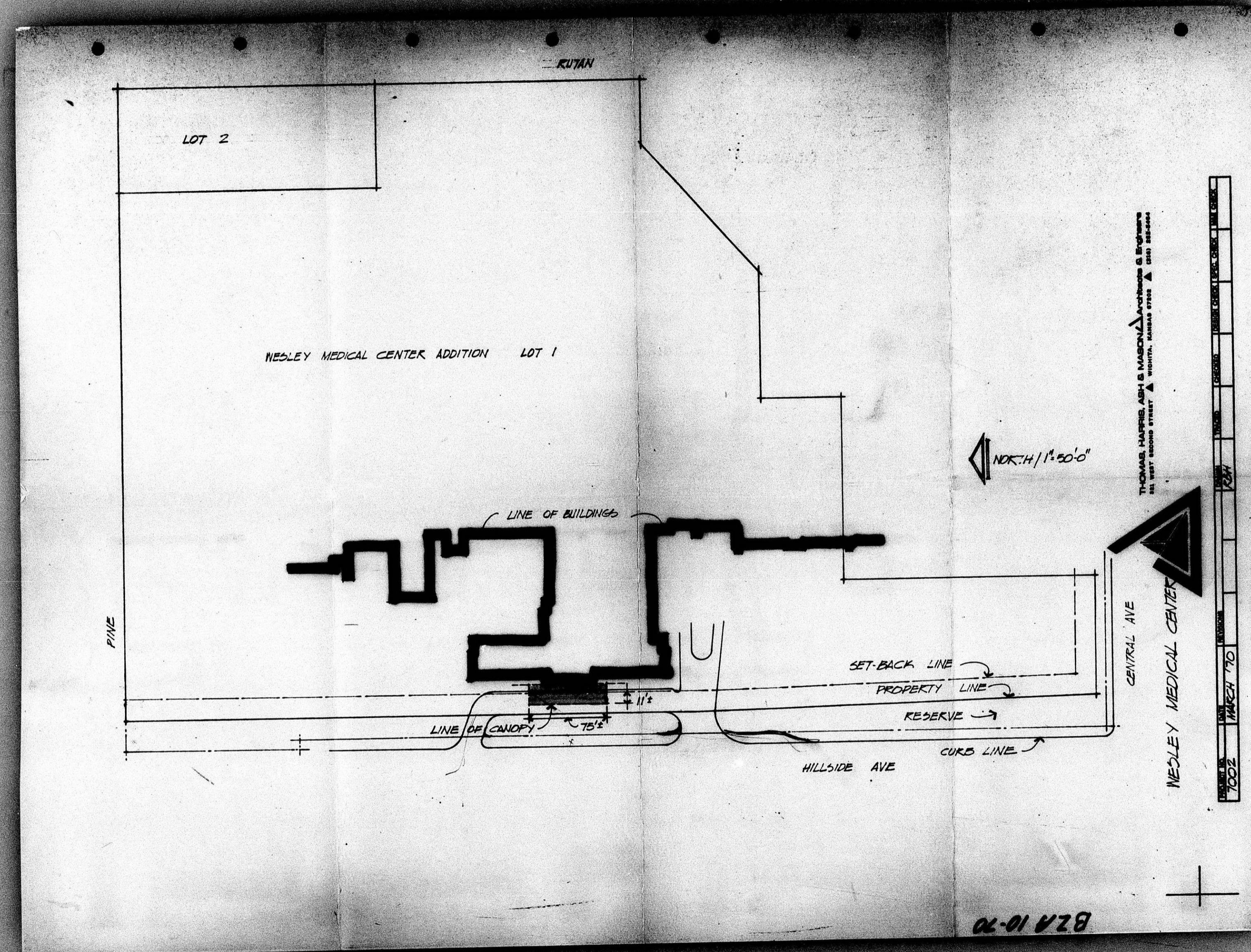


PROGRESS
PRINT
SCALE 1/8" = 1'-0" MAR 13 1970

THOMAS HARRIS, ASH & MASON
Architects & Engineers
241 NORTH BUCK STREET, WASHINGTON, D.C. 20001

B2710-70

FILMED FROM THE BEST
AVAILABLE COPY



THOMAS, HARRIS, ARBY & MASON, ARCHITECTS & ENGINEERS
 101 WEST SECOND STREET, SUITE 100, DENVER, COLORADO 80202

BZA 10-70

FILMED FROM THE BEST AVAILABLE COPY