

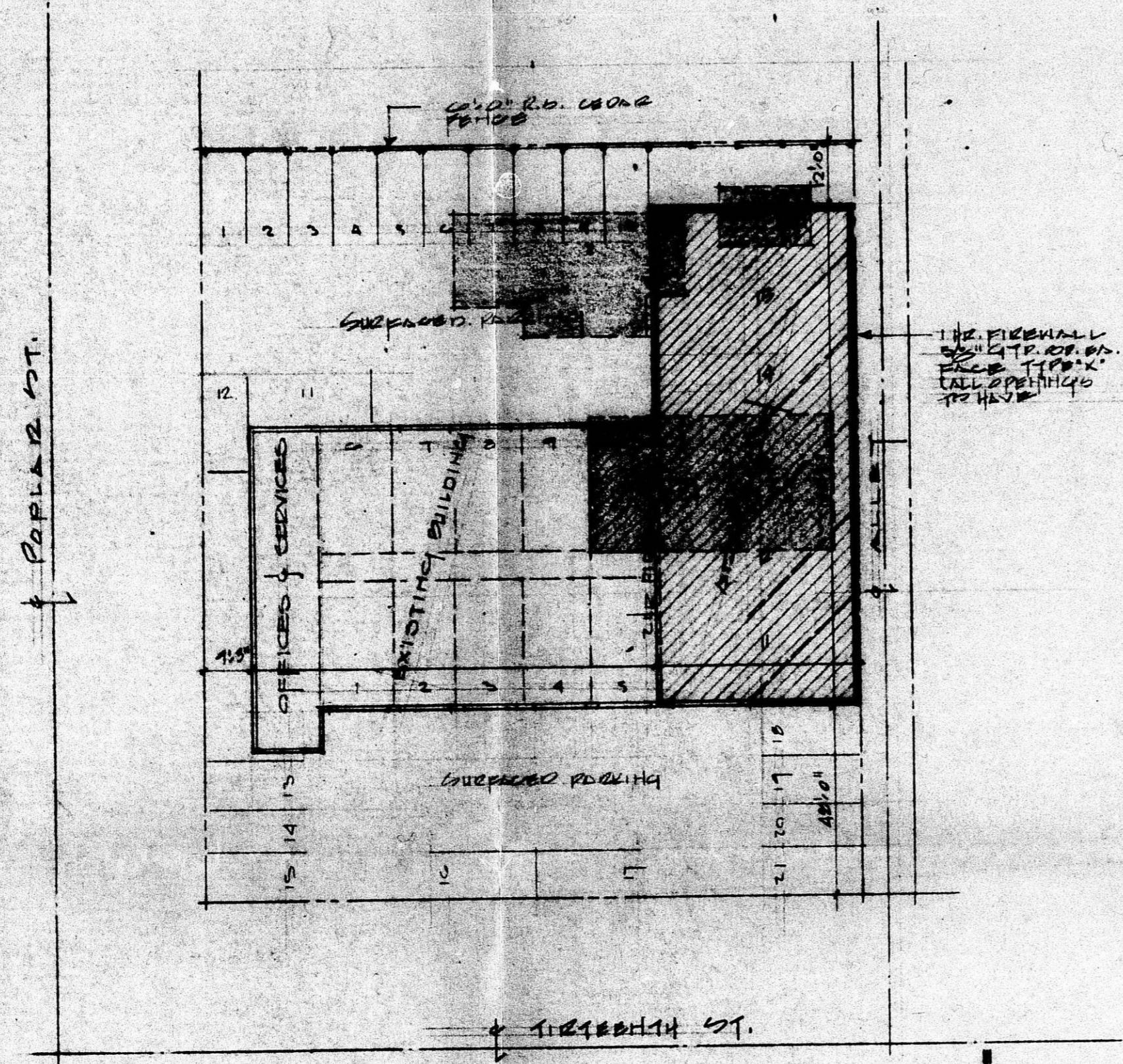
**DATA:**

|           |                                  |
|-----------|----------------------------------|
| LOT       | 38, 40, 42, 44, 46, 48 ON POPLAR |
| IN        | 2000 HILL ADDITION TO WICHITA    |
|           | WOODRICK COUNTY, KANSAS.         |
| ZONING    | L.C. (LIGHT COMMERCIAL)          |
| FIRE ZONE | III                              |
| PARKING   | EXISTING BUILDING 4,124 S.F.     |
|           | ADDITION 4,330 S.F.              |
| TOTAL     | 8,454 S.F.                       |
| REQ'D     | 2,454 S.F. @ 1/250 = 34          |
| SHOW      | AN ADDITIONAL REQ'D 21           |
|           | 13                               |

SITE PLAN

APPROVED BY  
 CITY CLERK  
 FEBRUARY 1978

MADE FROM THE  
 ORIGINAL PLAN



DATA:

SITE  
 LOTS 38, 40, 42, 44, 46, 48 ON POPLAR  
 IN 20th HILL ADDITION TO WICHITA  
 COUNTY, KANSAS.  
 ZONING L.C. (LIGHT COMMERCIAL)  
 FIRE ZONE II  
 PARKING EXISTING BUILDING 4,124 S.F.  
 ADDITION 4,330 S.F.  
 TOTAL 8,454 S.F.  
 REQ'D 8,454 S.F. @ 1/250 = 34  
 SHOWS AN ADDITIONAL REQ'D 21  
 13

SITE PLAN