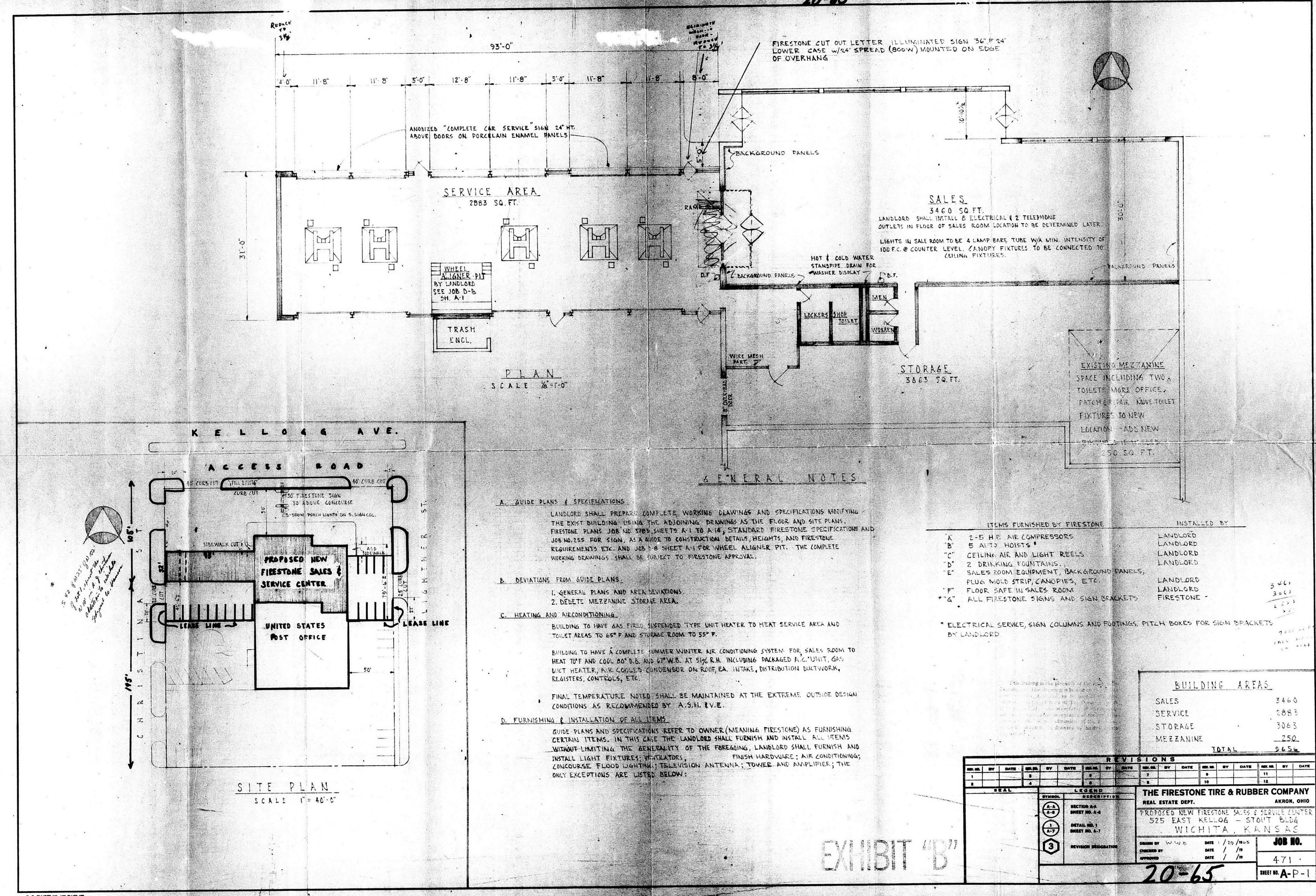
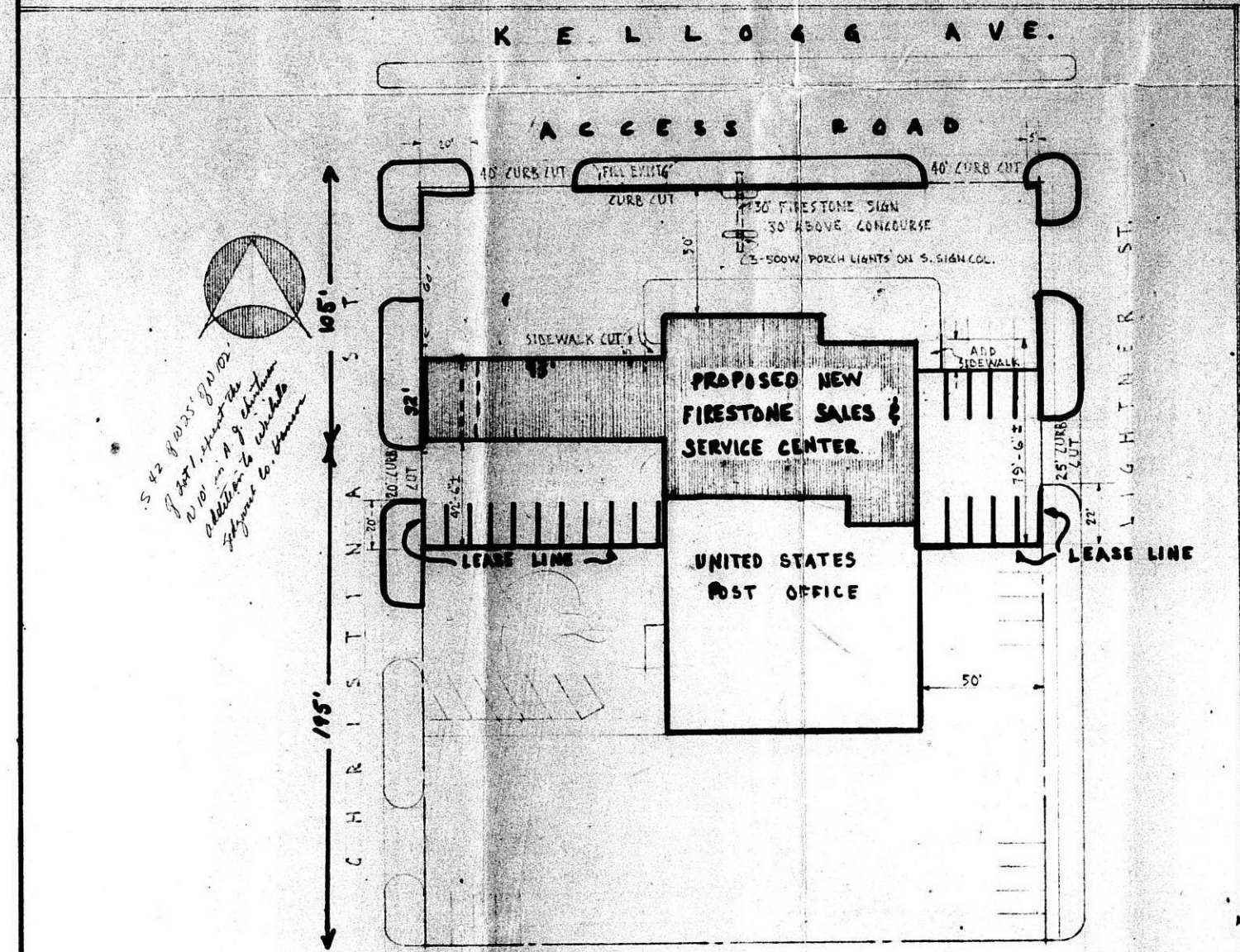


20-65



PLAN
SCALE 1/8" = 1'-0"



SITE PLAN
SCALE 1" = 40'-0"

GENERAL NOTES

- A. GUIDE PLANS & SPECIFICATIONS
LANDLORD SHALL PREPARE COMPLETE WORKING DRAWINGS AND SPECIFICATIONS NOTIFYING THE EXIST BUILDING USING THE ADJOINING DRAWINGS AS THE FLOOR AND SITE PLANS. FIRESTONE PLANS JOB NO. 5785 SHEETS A-1 TO A-18, STANDARD FIRESTONE SPECIFICATIONS AND JOB NO. 155 FOR SIGN, AS A GUIDE TO CONSTRUCTION DETAILS, HEIGHTS, AND FIRESTONE REQUIREMENTS ETC. AND JOB 1-8 SHEET A-1 FOR WHEEL ALIGNER PIT. THE COMPLETE WORKING DRAWINGS SHALL BE SUBJECT TO FIRESTONE APPROVAL.
- B. DEVIATIONS FROM GUIDE PLANS
1. GENERAL PLANS AND AREA SECTIONS
2. DEBRIS MEZZANINE STORAGE AREA.
- C. HEATING AND AIRCONDITIONING
BUILDING TO HAVE GAS FIRED SUSPENDED TYPE UNIT HEATER TO HEAT SERVICE AREA AND TOILET AREAS TO 65° F. AND STORAGE ROOM TO 55° F.
BUILDING TO HAVE A COMPLETE SUMMER WINTER AIR CONDITIONING SYSTEM FOR SALES ROOM TO HEAT 70° F. AND COOL 80° D.B. AND 67° W.B. AT 50% R.H. INCLUDING PACKAGED A.C. UNIT, GAS BUILT HEATER, AIR COOLER CONDENSER ON ROOF, EA. INTAKE, DISTRIBUTION DUCTWORK, REGISTERS, CONTROLS, ETC.
FINAL TEMPERATURE NOTED SHALL BE MAINTAINED AT THE EXTREME OUTSIDE DESIGN CONDITIONS AS RECOMMENDED BY A.S.H. E.V.E.
- D. FURNISHING & INSTALLATION OF ALL ITEMS
GUIDE PLANS AND SPECIFICATIONS REFER TO OWNER (MEANING FIRESTONE) AS FURNISHING CERTAIN ITEMS. IN THIS CASE THE LANDLORD SHALL FURNISH AND INSTALL ALL ITEMS WITHOUT LIMITING THE GENERALITY OF THE FOREGOING, LANDLORD SHALL FURNISH AND INSTALL LIGHT FIXTURES, REGULATORS, FINISH HARDWARE, AIR CONDITIONING, CONCOURSE FLOOD LIGHTING, TELEVISION ANTENNA, TOWER AND AMPLIFIER, THE ONLY EXCEPTIONS ARE LISTED BELOW:

ITEMS FURNISHED BY FIRESTONE	INSTALLED BY
* A 2-5 H.P. AIR COMPRESSORS	LANDLORD
* B 5 AUTO HOISTS	LANDLORD
* C CEILING AIR AND LIGHT REELS	LANDLORD
* D 2 DRINKING FOUNTAINS	LANDLORD
* E SALES ROOM EQUIPMENT, BACKGROUND PANELS, FLOOR MOLD STRIP, CANOPIES, ETC.	LANDLORD
* F FLOOR SAFE IN SALES ROOM	LANDLORD
* G ALL FIRESTONE SIGNS AND SIGN BRACKETS	FIRESTONE
* ELECTRICAL SERVICE, SIGN COLUMNS AND FOOTINGS, PITCH BOXES FOR SIGN BRACKETS BY LANDLORD	

BUILDING AREAS	
SALES	3400
SERVICE	2883
STORAGE	3063
MEZZANINE	250
TOTAL	9600

REVISIONS										
NO.	BY	DATE	DESCRIPTION	NO.	BY	DATE	DESCRIPTION	NO.	BY	DATE
1				2				3		
2				4				5		
3				6				7		
4				8				9		
5				10				11		
6				12				13		
7				14				15		
8				16				17		
9				18				19		
10				20				21		

EXHIBIT "B"

THE FIRESTONE TIRE & RUBBER COMPANY
 REAL ESTATE DEPT. AKRON, OHIO
 PROPOSED NEW FIRESTONE SALES & SERVICE CENTER
 525 EAST KELLOGG - STOUT BLDG
 WICHITA, KANSAS

DESIGNED BY: W. H. H. DATE: 1/25/65
 CHECKED BY: DATE: 1/26/65
 APPROVED BY: DATE: 1/26/65

JOB NO. 471
 SHEET NO. A-P-1

20-65