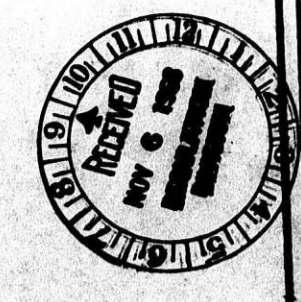


TOTAL PARKING
 97 SPACES @ 9'-0" = 45 PARKING SPACES PER UNIT

BZA 22-68

TRAFFIC ENGINEERING DIVISION APPROVED
W. H. STEFFENS
 Date: 1/10/68
 All parking facilities shall be located at all locations that are adjacent to public property (so that vehicles will not obstruct public property) and have a minimum length of 8 feet and a minimum cross section of 4' x 8'.
 All signs shall be painted red or white.
 All signs, markers, and signs shall be located on public property at the entrance and exit of the parking facility.

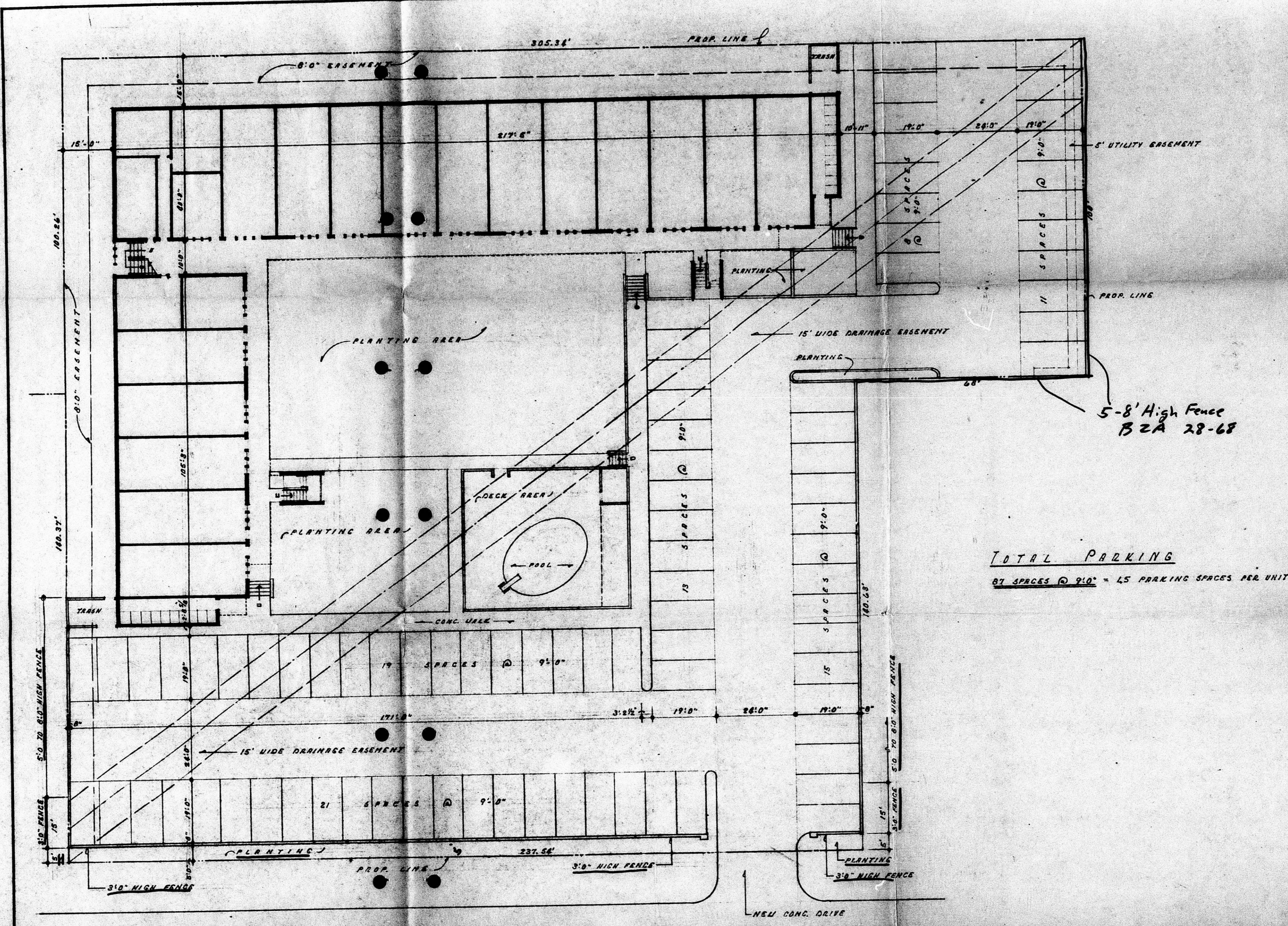


A I A
FEARNSHIRSCH
 ARCHITECTS
 200 WEST 10TH ST.
 WICHITA, KANSAS

PROPOSED APARTMENT COMPLEX
 FOR **W. H. STEFFENS**
 WICHITA, KANSAS

FOR 1/10/68
 W. H. STEFFENS
 200 WEST 10TH ST.
 WICHITA, KANSAS
 67201-00

FILED FROM THE BEST AVAILABLE COPY



TOTAL PARKING
 87 SPACES @ 9'-0" = 15 PARKING SPACES PER UNIT

B2A 22-68.

S I T E P L A N
 1/4" = 1'-0"
 NORTH

CIVIL ENGINEERING DIVISION APPROVED
[Signature]
 5-24-68

1. Building barriers shall be installed at all locations that are adjacent to public property (so that vehicles will not obstruct public property) and have a minimum length of 6 feet and a minimum cross section of 4" x 4".
 2. Wall lines shall be painted and 4" or greater in width.
 3. Proper ingress and egress signs shall be installed on private property at the entrances and exits of the parking facility.



A I A
 FEARNSHIRSCH
 ARCHITECTS
 1001 W. 17TH ST.
 WICHITA, KANSAS

PROPOSED APARTMENT COMPLEX
 FOR W. H. STEFFENS
 WICHITA, KANSAS

DATE: 5-21-68
 SHEET NO. 1

FILMED FROM THE BEST AVAILABLE COPY