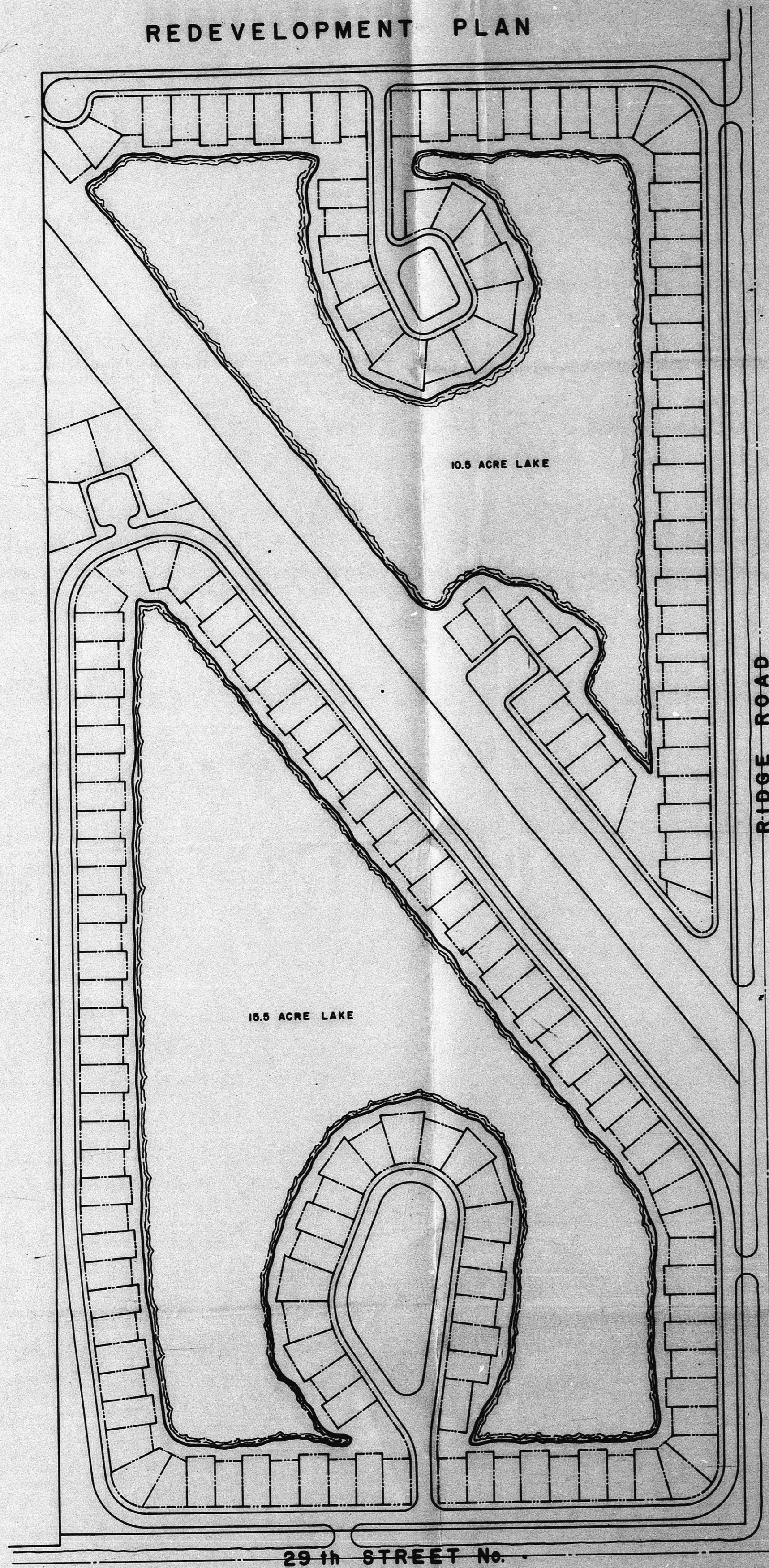


HOSKINSON

CONDITIONAL USE

REDEVELOPMENT PLAN

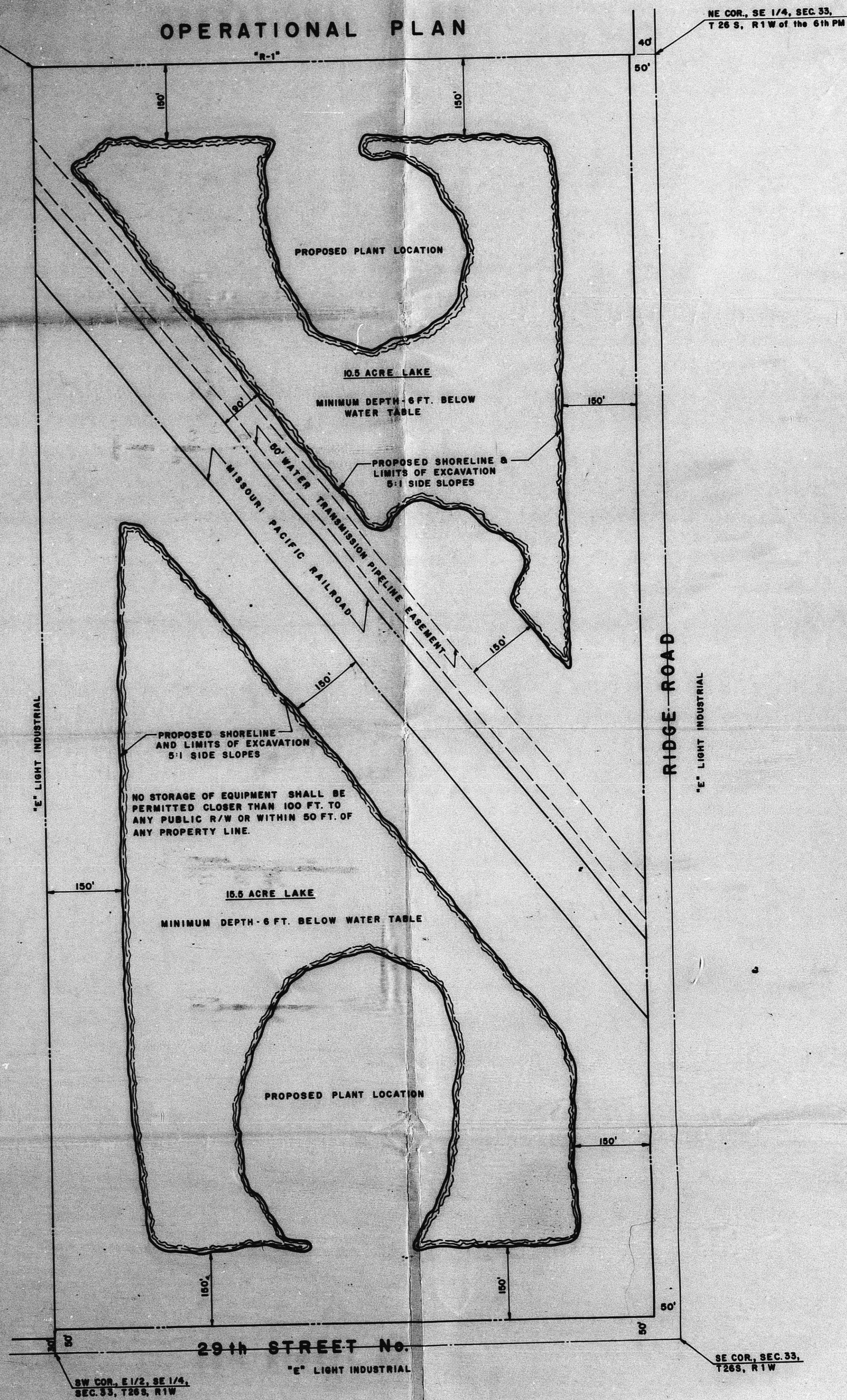


29th STREET No.

RIDGE ROAD

SW COR. E 1/2, SE 1/4, SEC. 33, T26S, R1W

OPERATIONAL PLAN



NE COR. SE 1/4, SEC. 33, T 26 S, R 1 W of the 6th PM

"E" LIGHT INDUSTRIAL

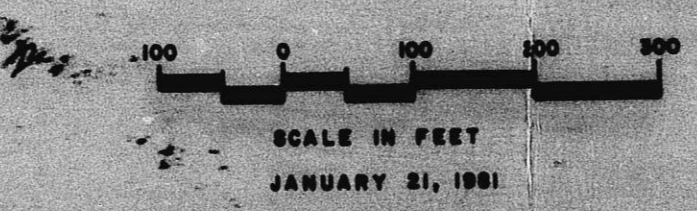
RIDGE ROAD
"E" LIGHT INDUSTRIAL

NO STORAGE OF EQUIPMENT SHALL BE PERMITTED CLOSER THAN 100 FT. TO ANY PUBLIC R/W OR WITHIN 50 FT. OF ANY PROPERTY LINE.

29th STREET No.

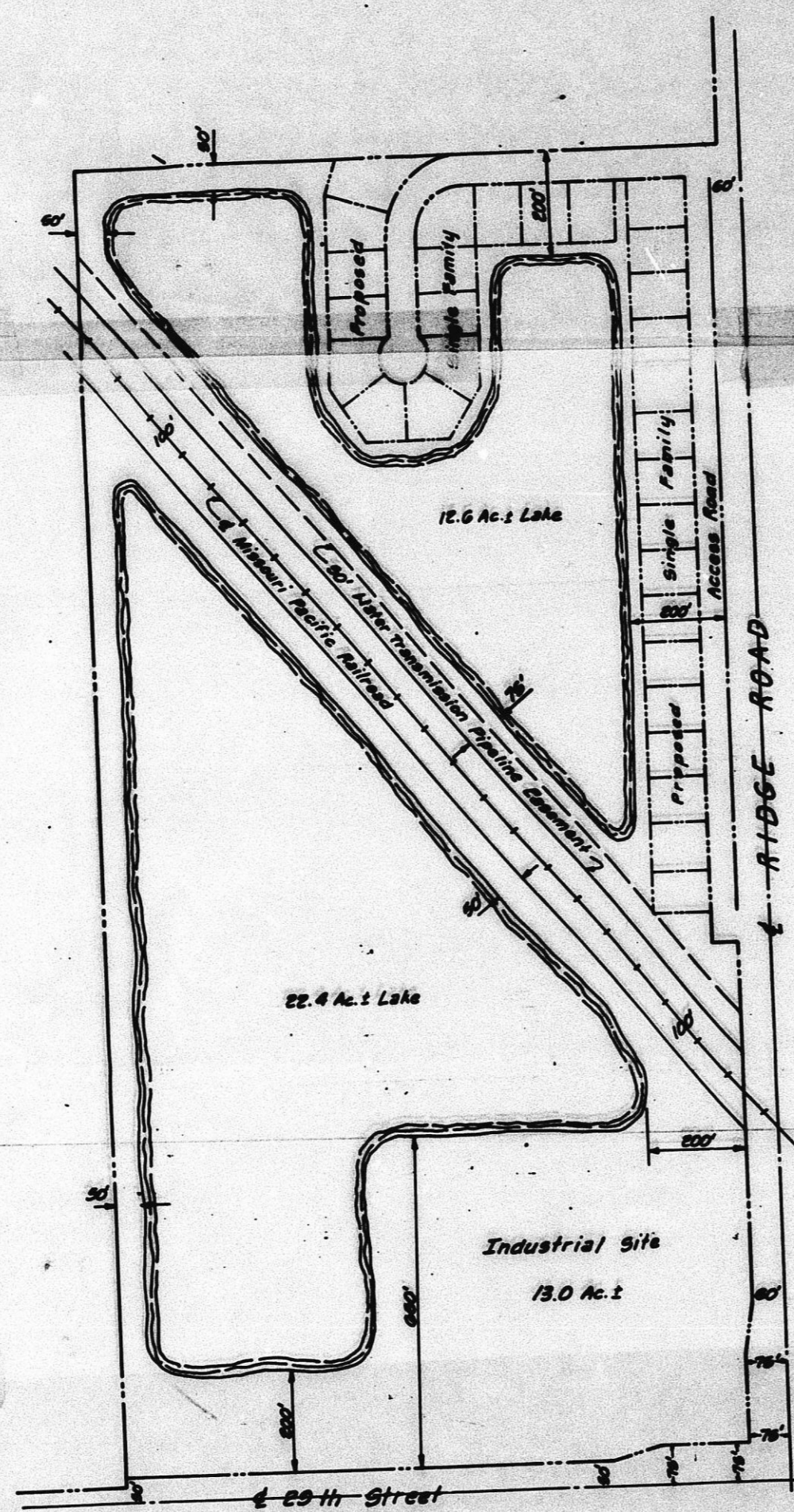
SW COR. E 1/2, SE 1/4, SEC. 33, T26S, R1W

SE COR. SEC. 33, T26S, R1W

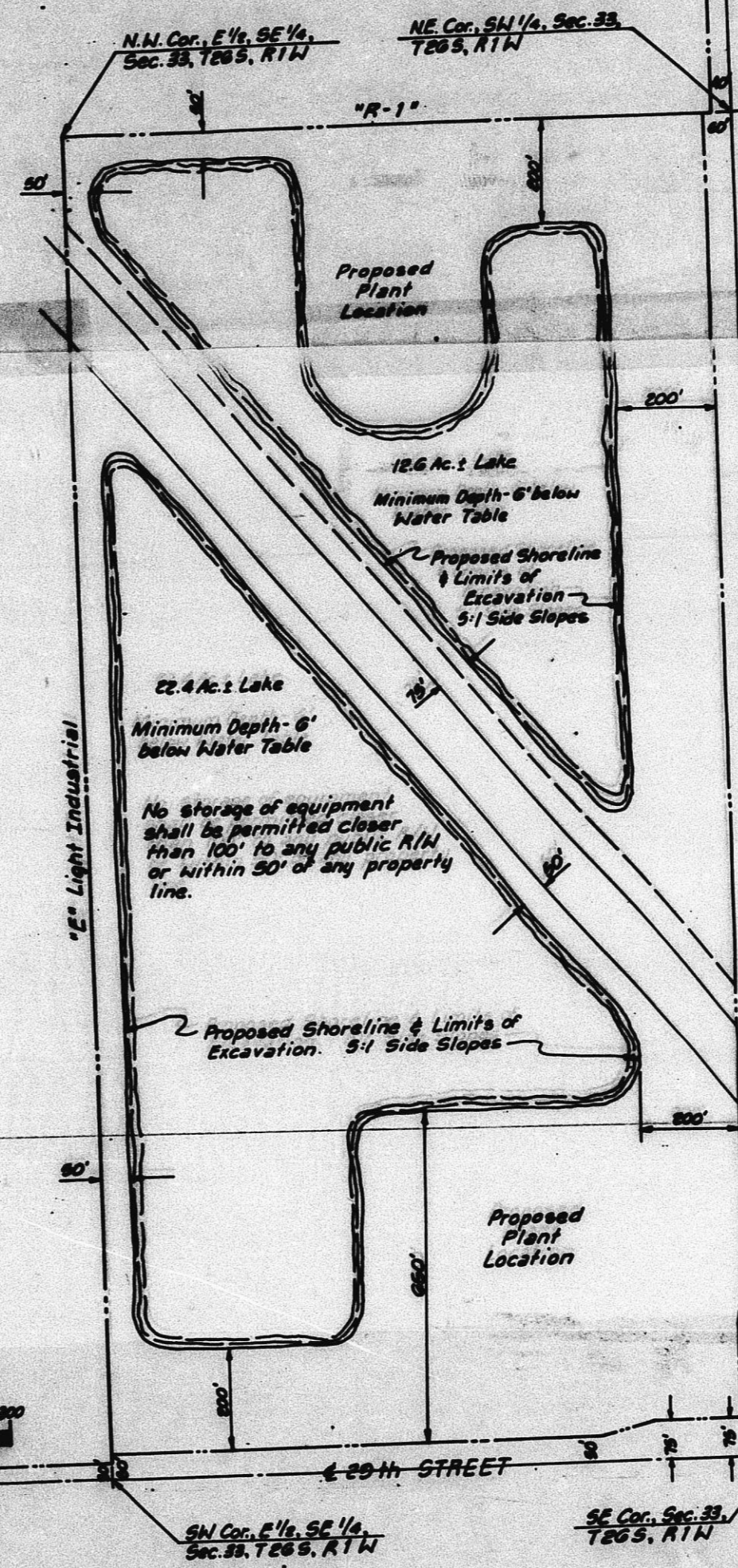


CU-245

FILMED FROM THE BEST AVAILABLE COPY

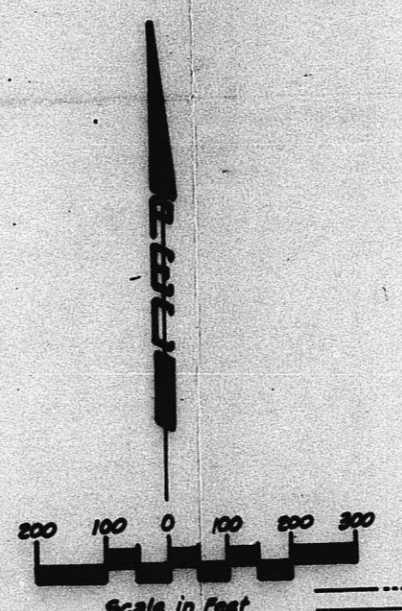
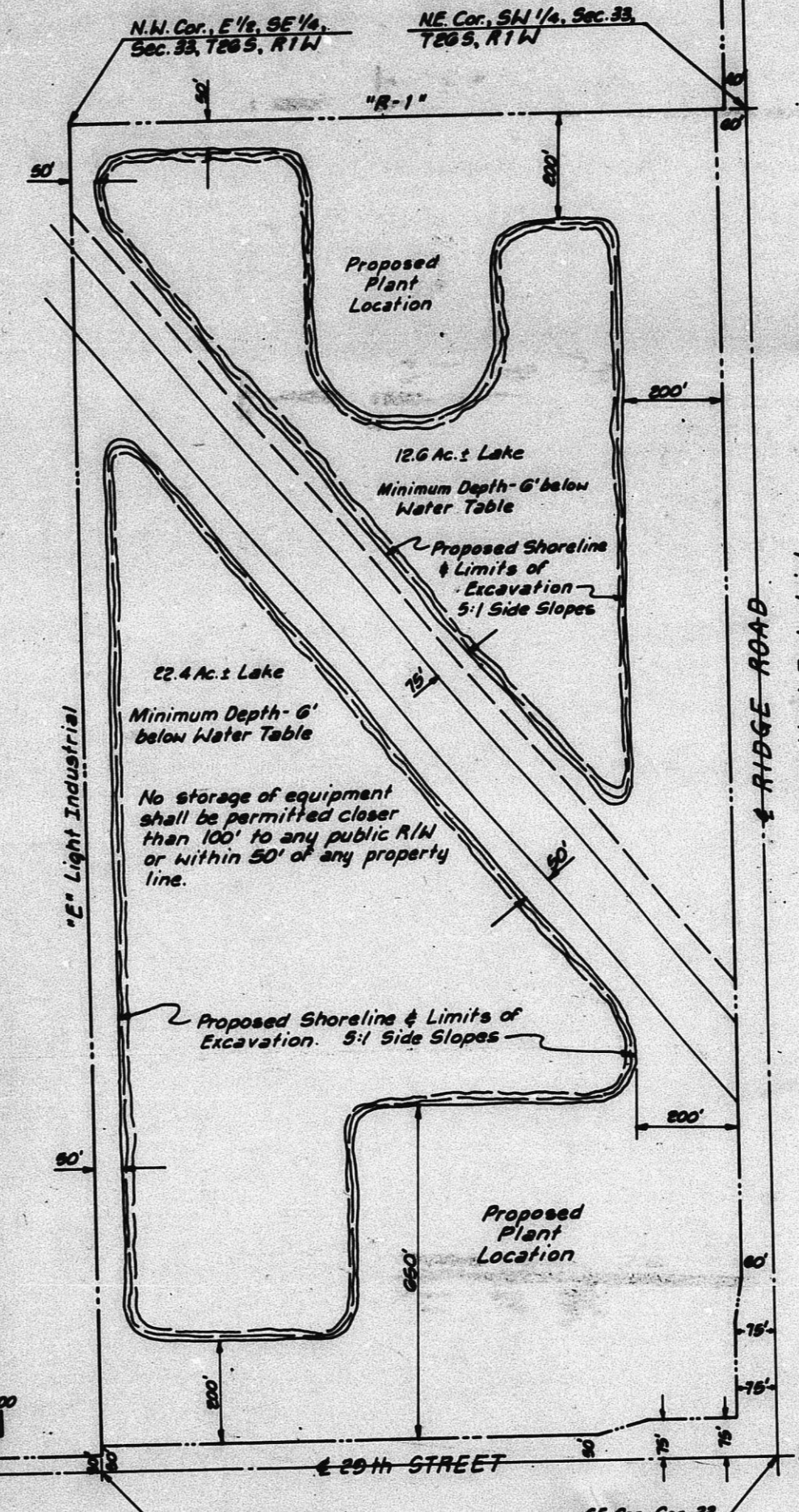
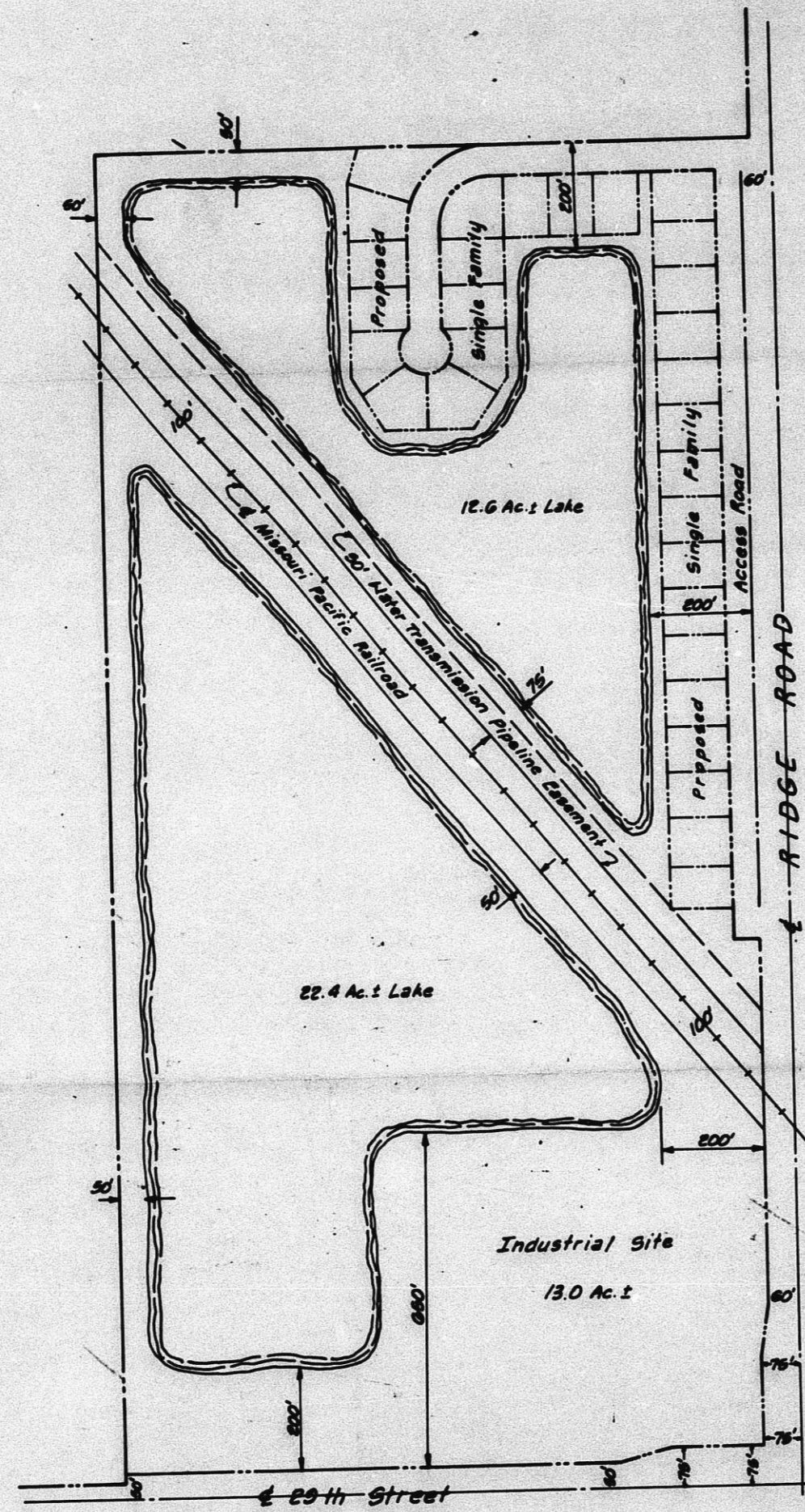


REDEVELOPMENT PLAN
 HOSKINSON - CONDITIONAL USE



OPERATIONAL PLAN

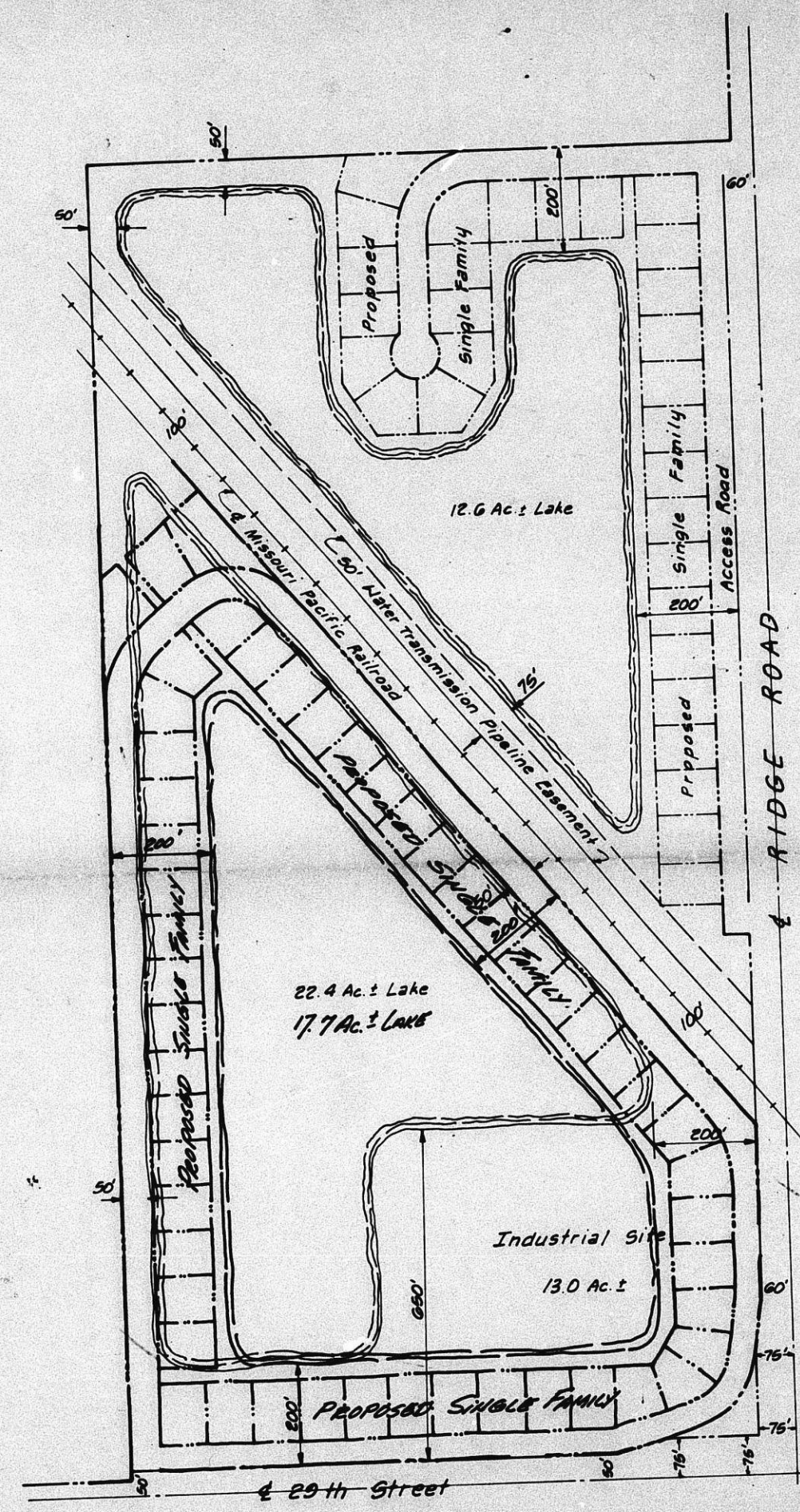
CU-245
 Approval Plan
 MAPC 2-12-51
 BIBC 3-11-51



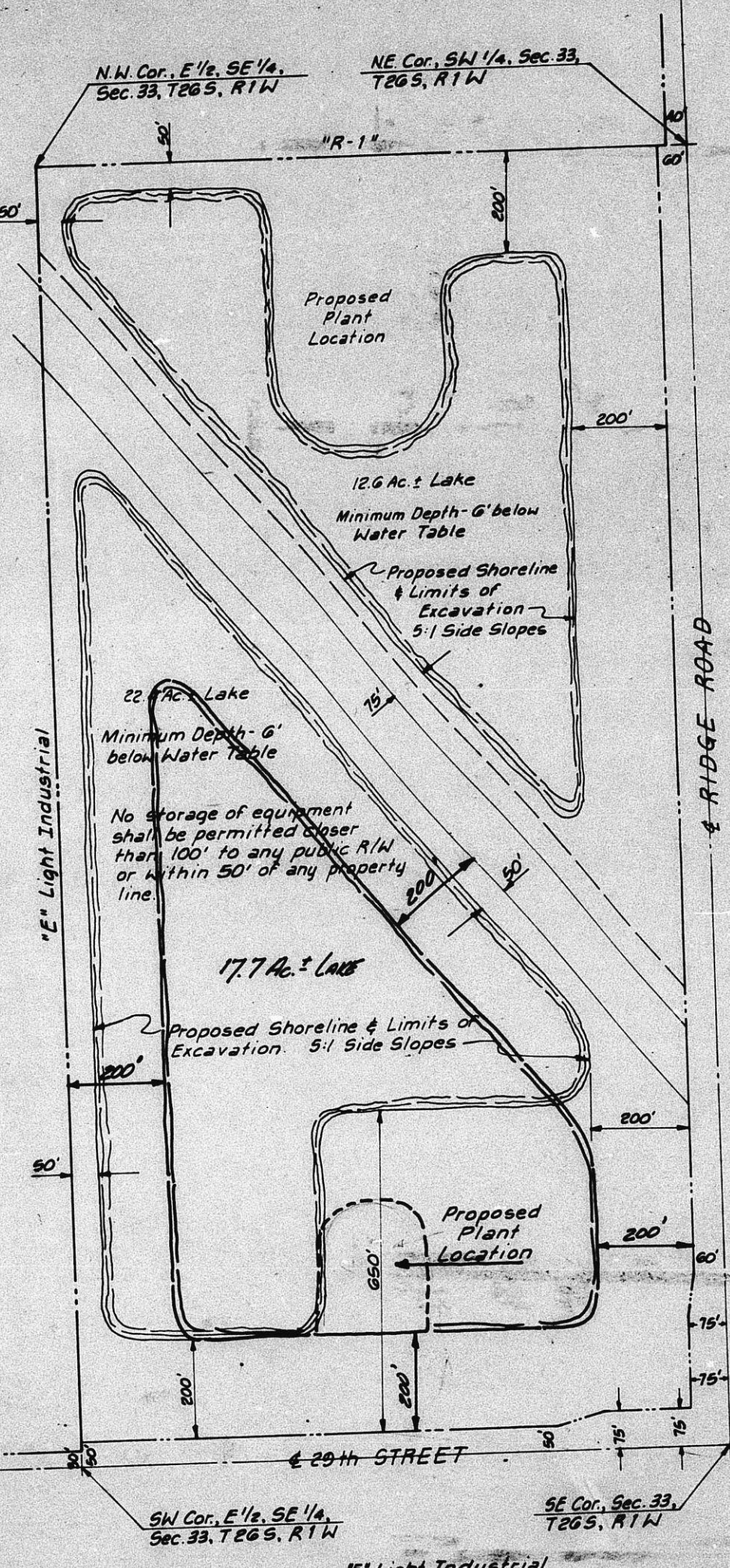
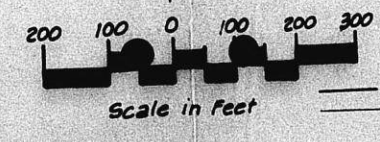
REDEVELOPMENT PLAN
HOSKINSON - CONDITIONAL USE

CU-245
 Appraisal Plan
 MAPC 2-12-81
 Bldg 3-11-81

CU-245



REDEVELOPMENT PLAN
 HOSKINSON - Conditional Use



OPERATIONAL PLAN
 CU-245