

↑
N
1" = 200'

OPERATIONAL PLAN

CU-276

MAPC APPROVED B-B-85	
BOG APPROVED B-B-85	
SE 1/4 Sec. 27	
ASSOCIATED MATERIAL and Supply	
Jan. 11, 1985	Les Mangos
July 1985	
MAPD COPY 2 of 2	

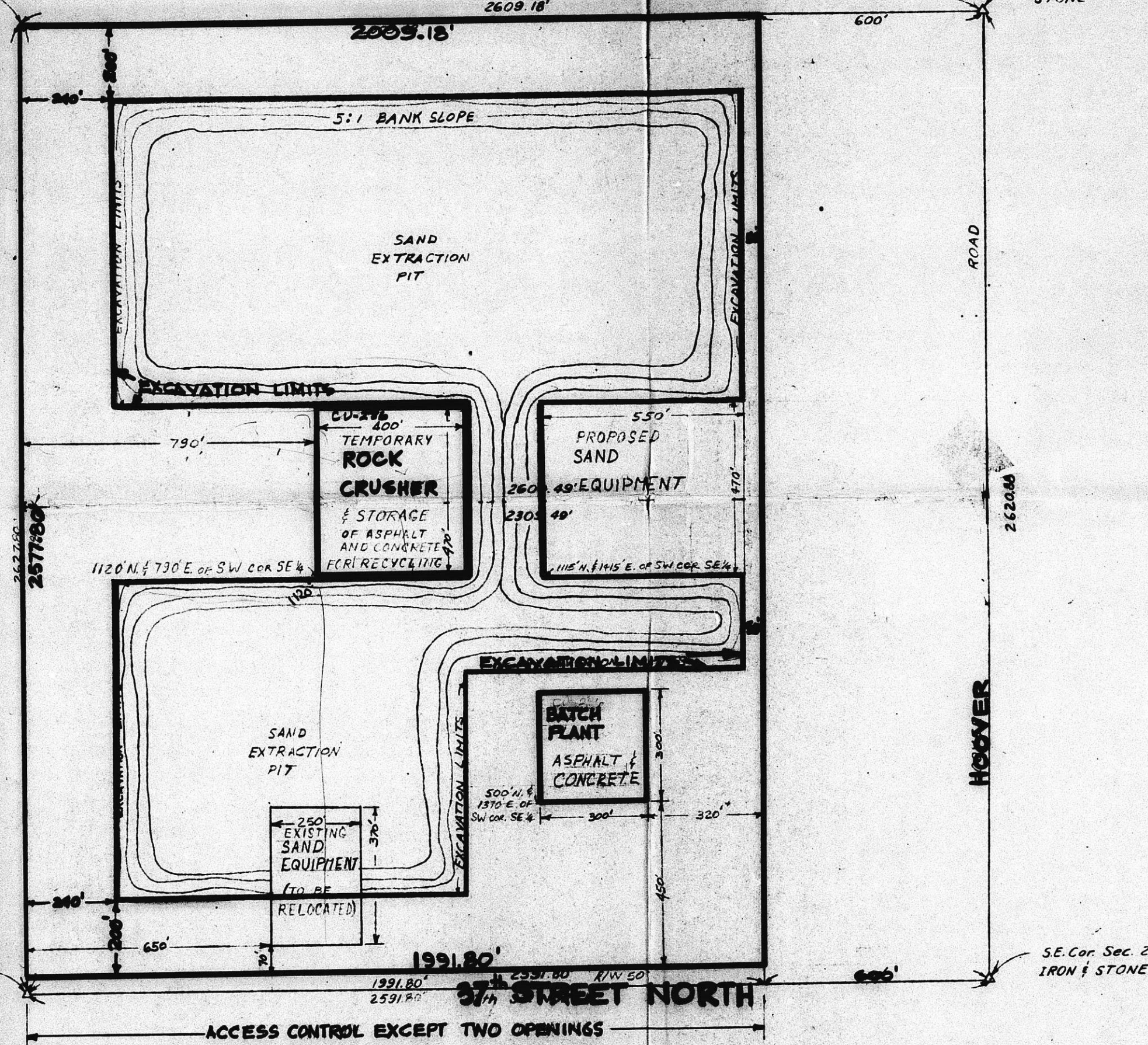
K-96 HIGHWAY R.O.W.

Ch. Sec. 27

NE Cor. SE 1/4 STONE



1" = 200'



S.W. Cor. of SE 1/4, Sec. 27
T26S, R1W of the 6th. P.M.
IRON & STONE

SE. Cor. Sec. 27
IRON & STONE

OPERATIONAL PLAN

CU-276

MAPC APPROVED 8-8-85
BOC APPROVED 9-4-85
SE 1/4 Sec. 27
ASSOCIATED Material
and Supply

Jan. 11, 1985 Lee Manquin
July 1985

MAPD COPY 1042

DOE RD.

RIDGE RD.

GRESHAM
SECOND
ADD.

CU-276

FORTY FIFTH ST. NO.

K-96
K-96

MARION, GRESHAM ST. NO.

HOOVER RD.

CU-276

FILMED FROM THE BEST
AVAILABLE COPY