

EBERLY FARM conditional use

A PRIVATELY OWNED INDOOR/OUTDOOR RECREATIONAL AREA WITH PROVISIONS FOR THE FOLLOWING RANGE OF RECREATIONAL FACILITIES:

OUTDOOR - BASEBALL, SOFTBALL, SWIMMING, HORSESHOES, SOCCER, FOOTBALL, BASKETBALL, VOLLEYBALL, HAYRACK RIDES, AND OTHER SIMILAR OUTDOOR RECREATION.

THE USE OF FIREARMS, AIR RIFLES, ARCHERY EQUIPMENT, AND MOTOR DRIVEN RECREATIONAL VEHICLES SHALL BE PROHIBITED.

INDOOR - EDUCATIONAL FACILITIES, MEETING ROOMS, DINING ROOMS, AND INDOOR RECREATIONAL FACILITIES (I.E. TABLE GAMES, DANCING, ARTS AND CRAFTS).

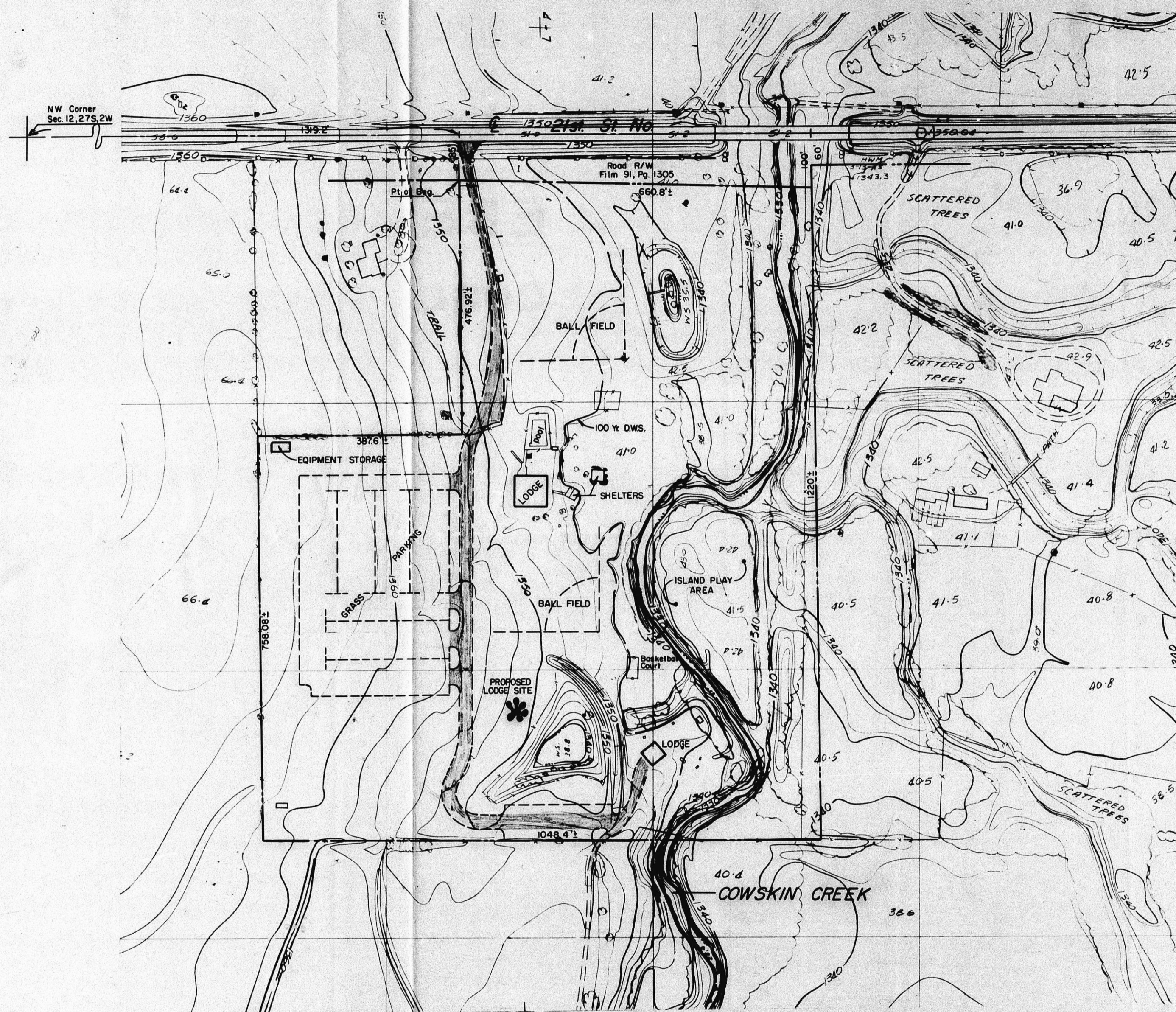
IN ADDITION TO THE ABOVE, THE SITE WILL PROVIDE AREAS FOR PICNICKING, PLAYGROUND EQUIPMENT, GUEST PARKING, MAINTENANCE, AND EQUIPMENT STORAGE.

NOTE: LIGHTING OF THE BALL FIELDS SHALL BE PROHIBITED.



CU-281

MAPC 5-16-85
BCC 6-12-85



EBERLY FARM conditional use

A PRIVATELY OWNED INDOOR/OUTDOOR RECREATIONAL AREA WITH PROVISIONS FOR THE FOLLOWING RANGE OF RECREATIONAL FACILITIES:

OUTDOOR - BASEBALL, SOFTBALL, SWIMMING, HORSESHOES, SOCCER, FOOTBALL, BASKETBALL, VOLLEYBALL, HAYRACK RIDES, AND OTHER SIMILAR OUTDOOR RECREATION.

THE USE OF FIREARMS, AIR RIFLES, ARCHERY EQUIPMENT, AND MOTOR DRIVEN RECREATIONAL VEHICLES SHALL BE PROHIBITED.

INDOOR - EDUCATIONAL FACILITIES, MEETING ROOMS, DINING ROOMS, AND INDOOR RECREATIONAL FACILITIES (I.E. TABLE GAMES, DANCING, ARTS AND CRAFTS).

IN ADDITION TO THE ABOVE, THE SITE WILL PROVIDE AREAS FOR PICNICKING, PLAYGROUND EQUIPMENT, GUEST PARKING, MAINTENANCE, AND EQUIPMENT STORAGE.

NOTE: LIGHTING OF THE BALL FIELDS SHALL BE PROHIBITED.



CU-281

MAPC 5-16-85
BGC 6-12-85