

NOTE: TOPO INTERPRETED FROM U.S.G.S. MAP

DEVELOPMENT CONCEPT

SCALE 1" = 100'
 0 50 100 200 300



AS LOTS
 TYPICAL LOT ALSO 44,000 S.F.
 MINIMAL PACE OF ROAD: 40,000

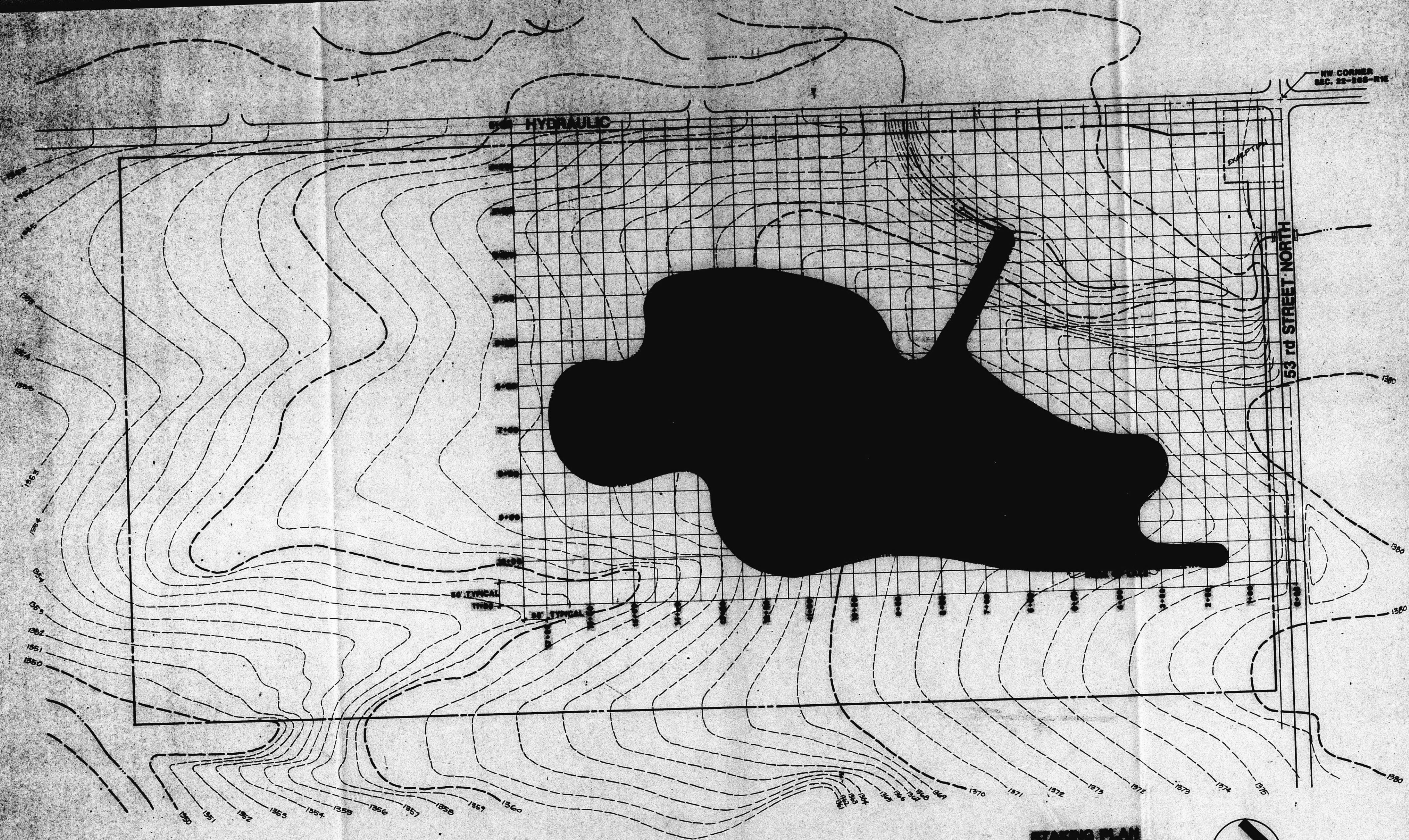
CU-290
 MAPC approved 4-3-86
 BGC approved 4-16-86

PDS
 PLANNING DEVELOPMENT SERVICES, INC.
 1000 N. 10th St., Suite 100
 Wichita, KS 67202
 Phone: (316) 261-1100
 Fax: (316) 261-1101

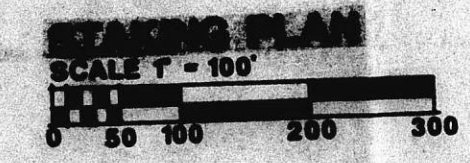
JETER PROPERTY
 Owners: Chris and L.P. Jeter

DRAWN: FEB. 1988
 CHECKED:
 REVISIONS:

SHEET 1 OF 5



NOTE: TOPO INTERPRETED FROM U.S.G.S. MAP

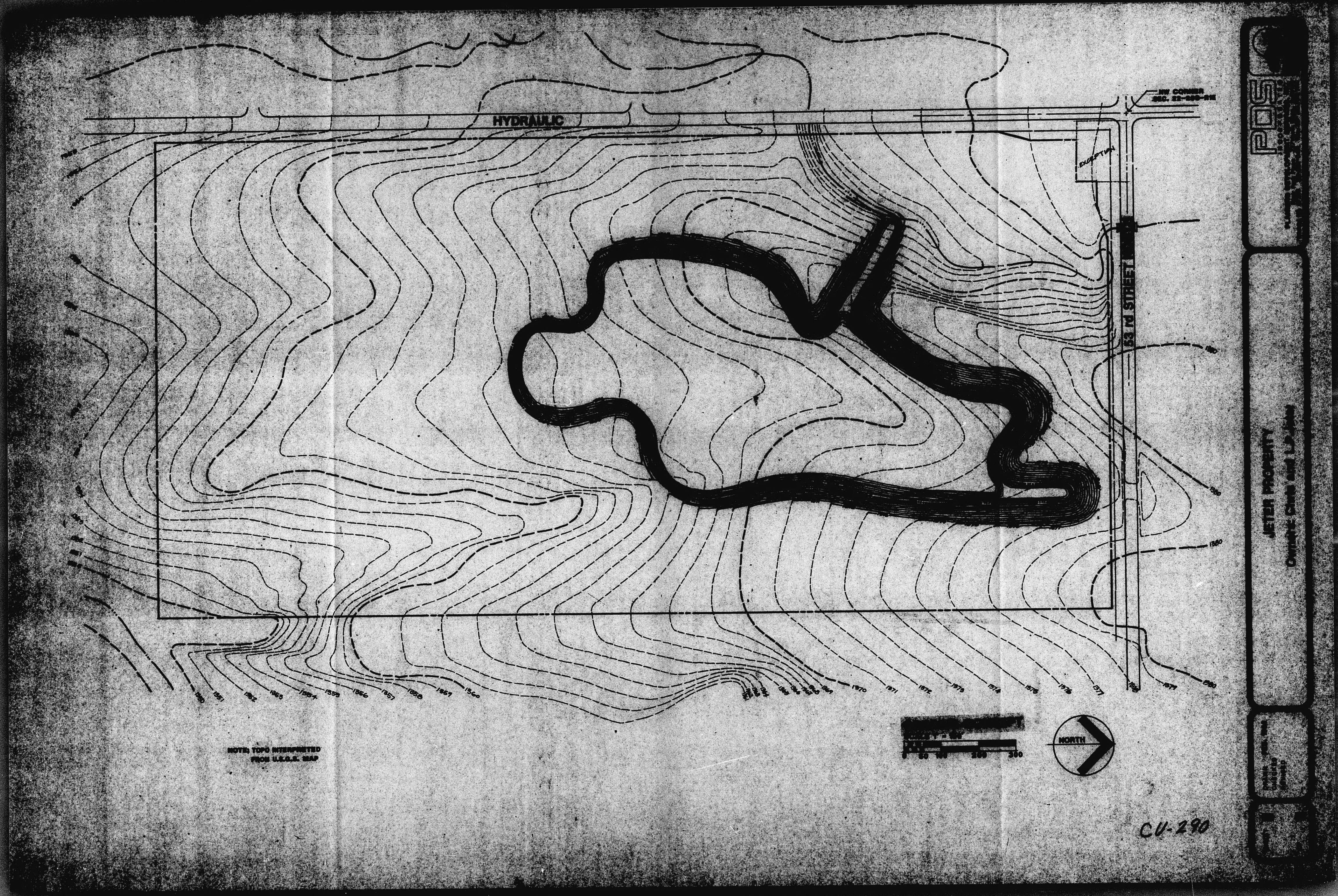


CU-290

POS
 PLANNING & DEVELOPMENT SERVICES, INC.
 1000 W. 10th St., Suite 100
 Oklahoma City, Oklahoma 73106
 Phone: (405) 241-1100
 Fax: (405) 241-1101

JETER PROPERTY
 Owners: Chrla and L.P. Jeter

SHEET
 DRAWN FEB. 1988
 CHECKED
 REVISED

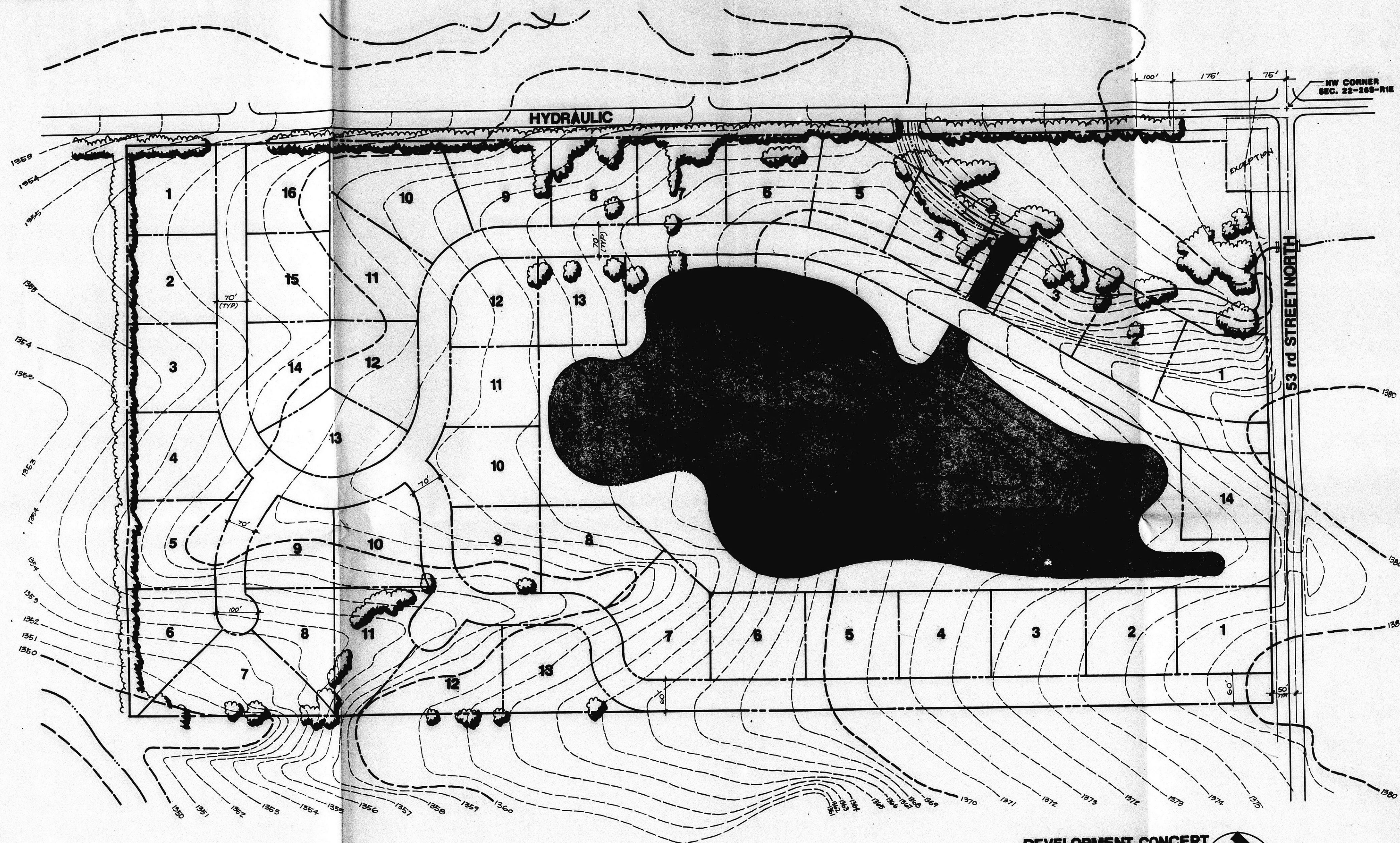


NOTE: TOPS INTERPRETED FROM U.S.G.S. MAP



CU-290

FILMED FROM THE BEST AVAILABLE COPY

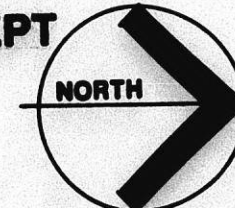


NOTE: TOPO INTERPRETED
FROM U.S.G.S. MAP

DEVELOPMENT CONCEPT

SCALE 1" = 100'

43 Lots
Typical lot size 40,000 S.F.
Linear Foot of Road: 14,100

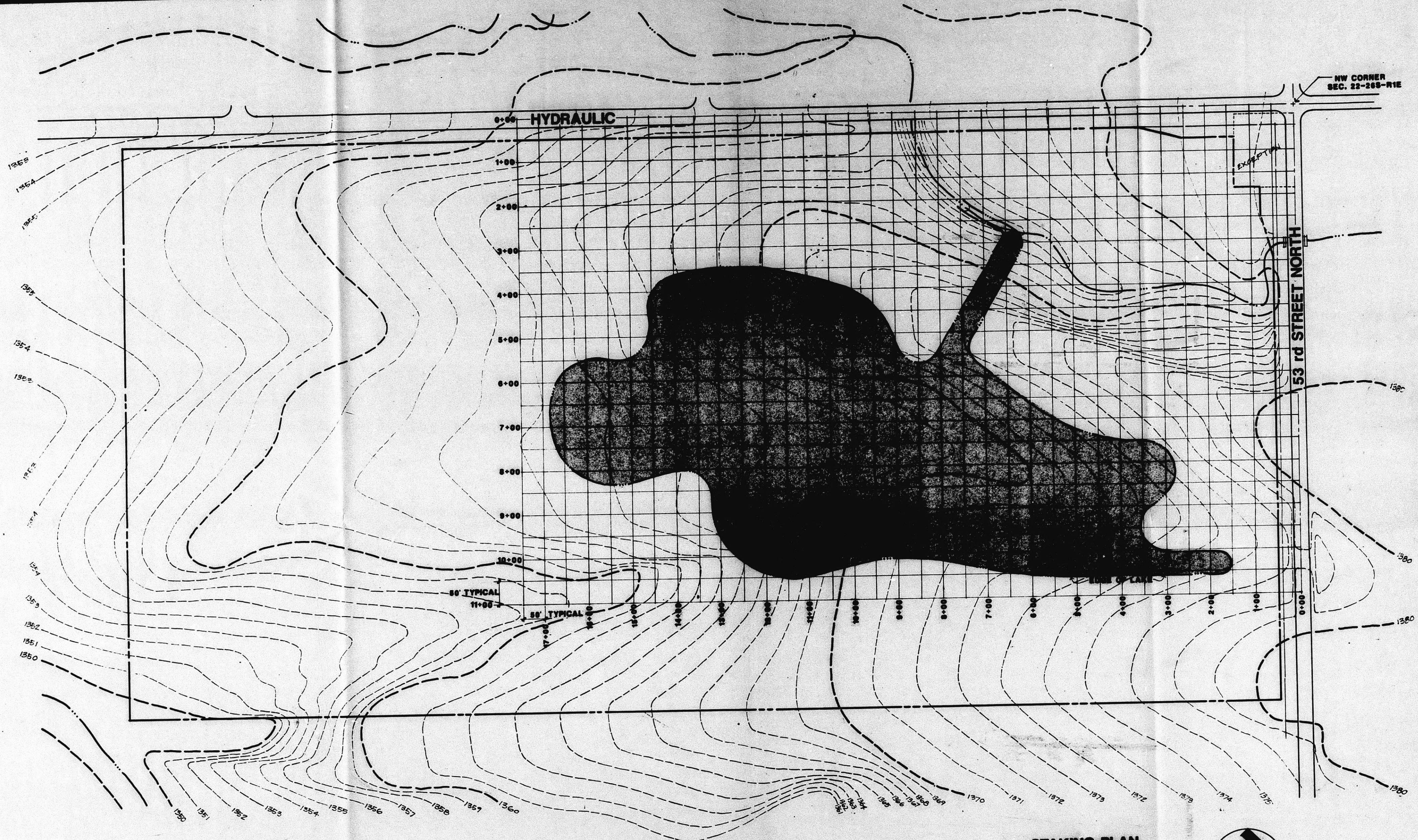


CU-290
MAPC approved 4-3-86
BGC approved 4-16-86

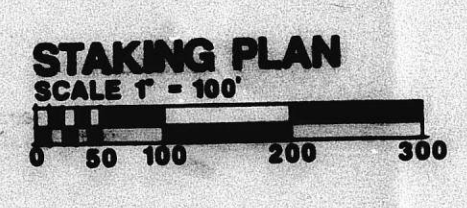
POS
PLANNING DEVELOPMENT
INCORPORATED
1100 N. 1st St., Suite 200
Wichita, KS 67202
Phone: 316-261-1100
Fax: 316-261-1101

JETER PROPERTY
Owners: Chris and L.P. Jeter

DRAWN	PEL 1986
REVISION	REVISED
SHEET 1	3
	5



NOTE: TOPO INTERPRETED FROM U.S.G.S. MAP

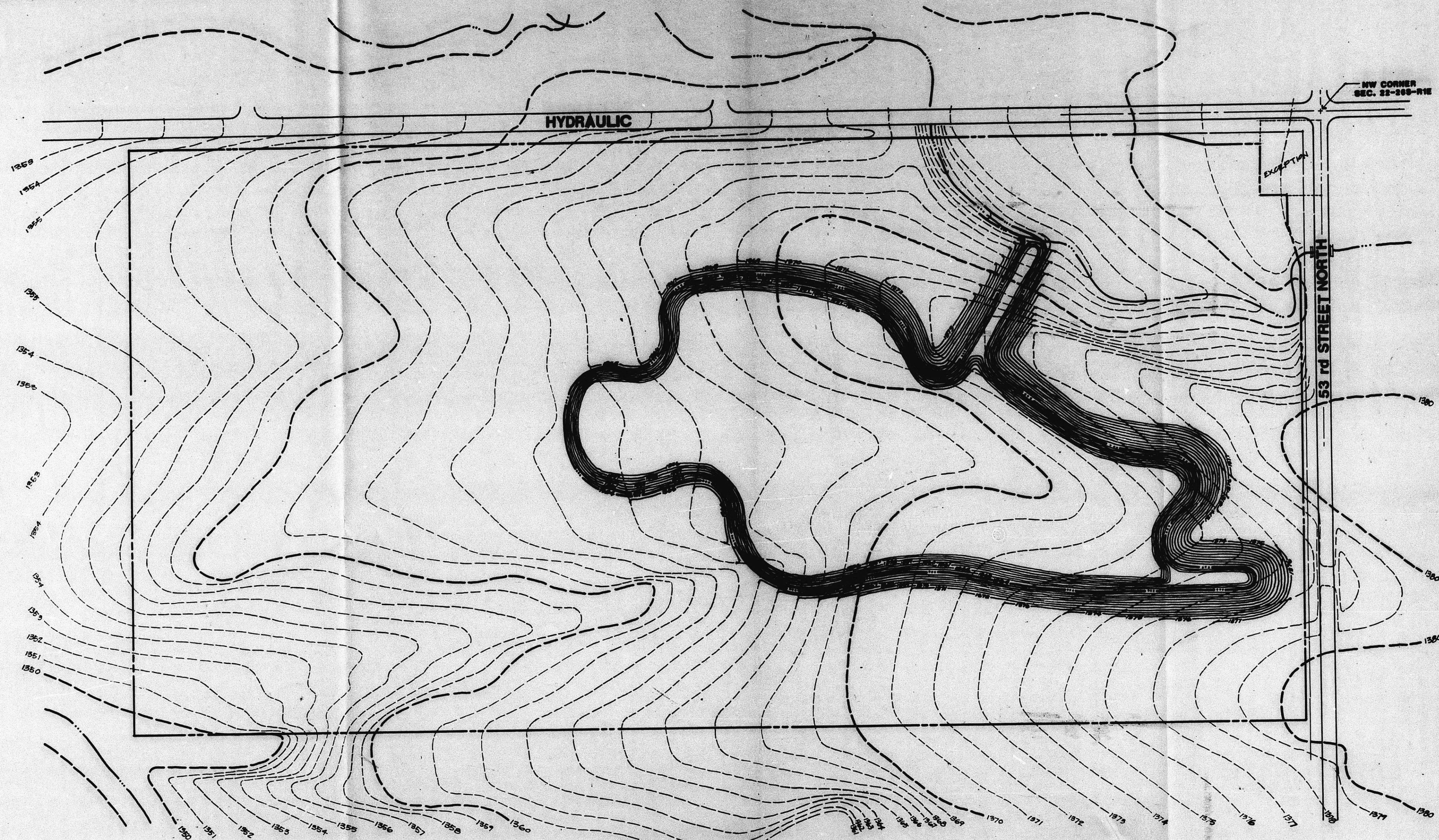


CU-290

POS
INCORPORATED
PLANNING DEVELOPMENT
2771 North 19th Street
Phoenix, AZ 85016
Phone: 602-998-0657
Fax: 602-998-0658

JETER PROPERTY
Owners: Chris and L.P. Jeter

DRAWN	FEB. 1998
CHECKED	
REVISED	
SHEET	2
OF	3



NOTE: TOPO INTERPRETED FROM U.S.G.S. MAP

GRADING CONCEPT
SCALE 1" = 100'



CU-290

PDS
PLANNING DEVELOPMENT SERVICES, INC.
Wichita, KS 67202

JETER PROPERTY
Owners: Chris and L.P. Jeter

DRAWN / FEB. 1999
CHECKED
REVISED

SHEET 3 OF 3