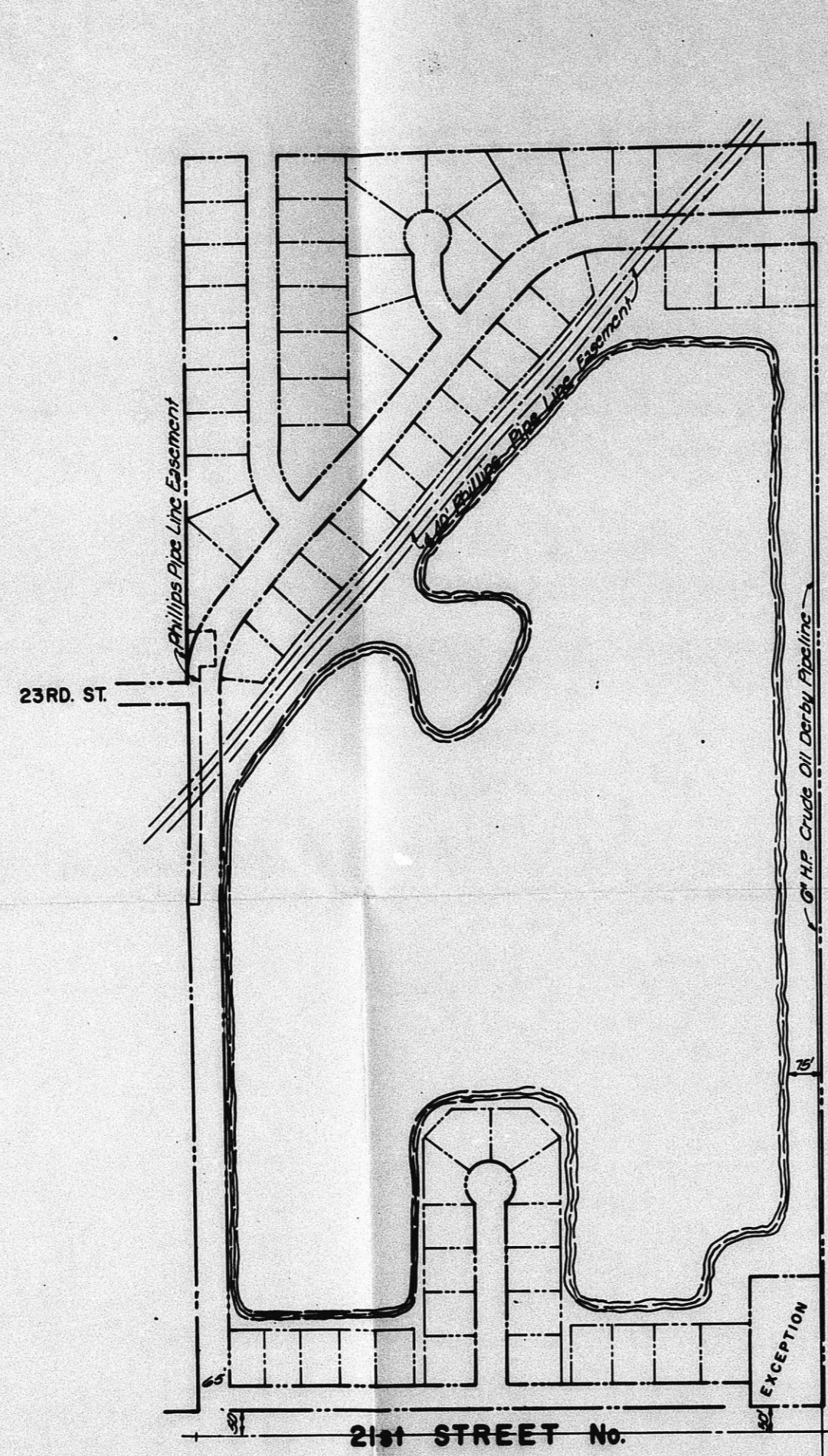


*CU-292
as submitted
for staff review*

CU-292

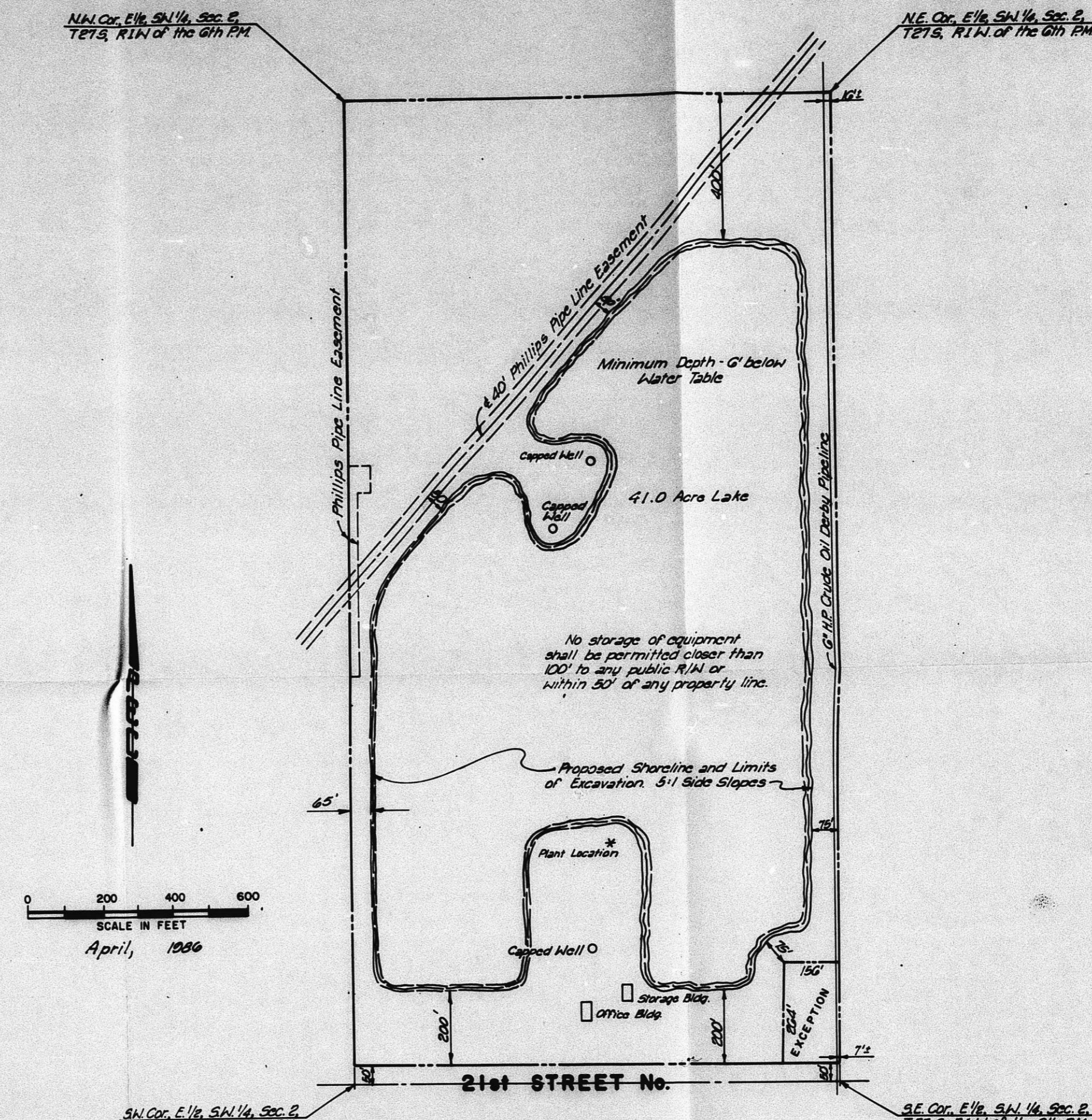
FOUNDATION, INC.
BIG RIVER SAND (SUBSIDIARY)
 CONDITIONAL USE
 (C.U. 258 AMENDED)

FILMED FROM THE BEST AVAILABLE COPY



REDEVELOPMENT PLAN

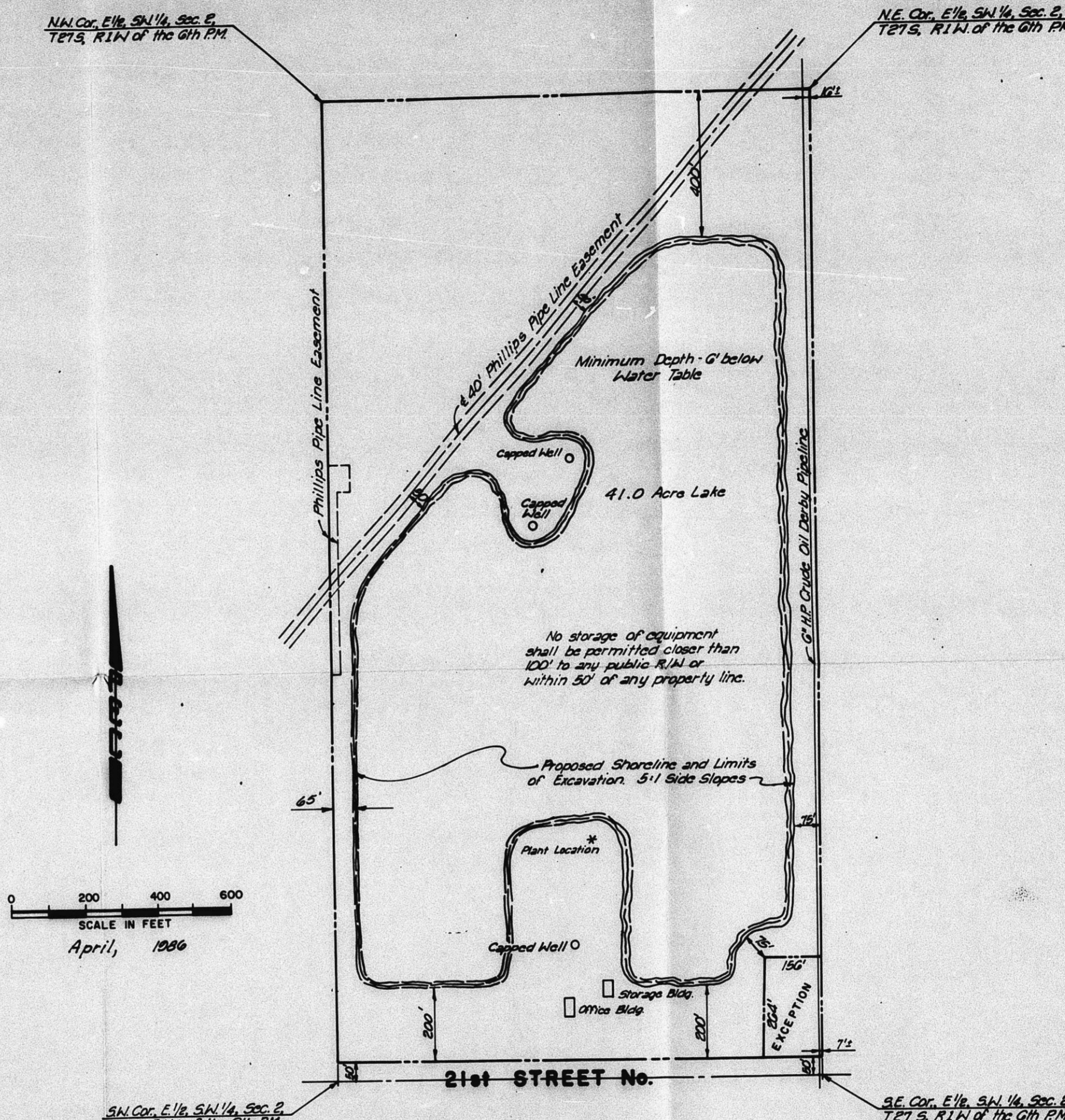
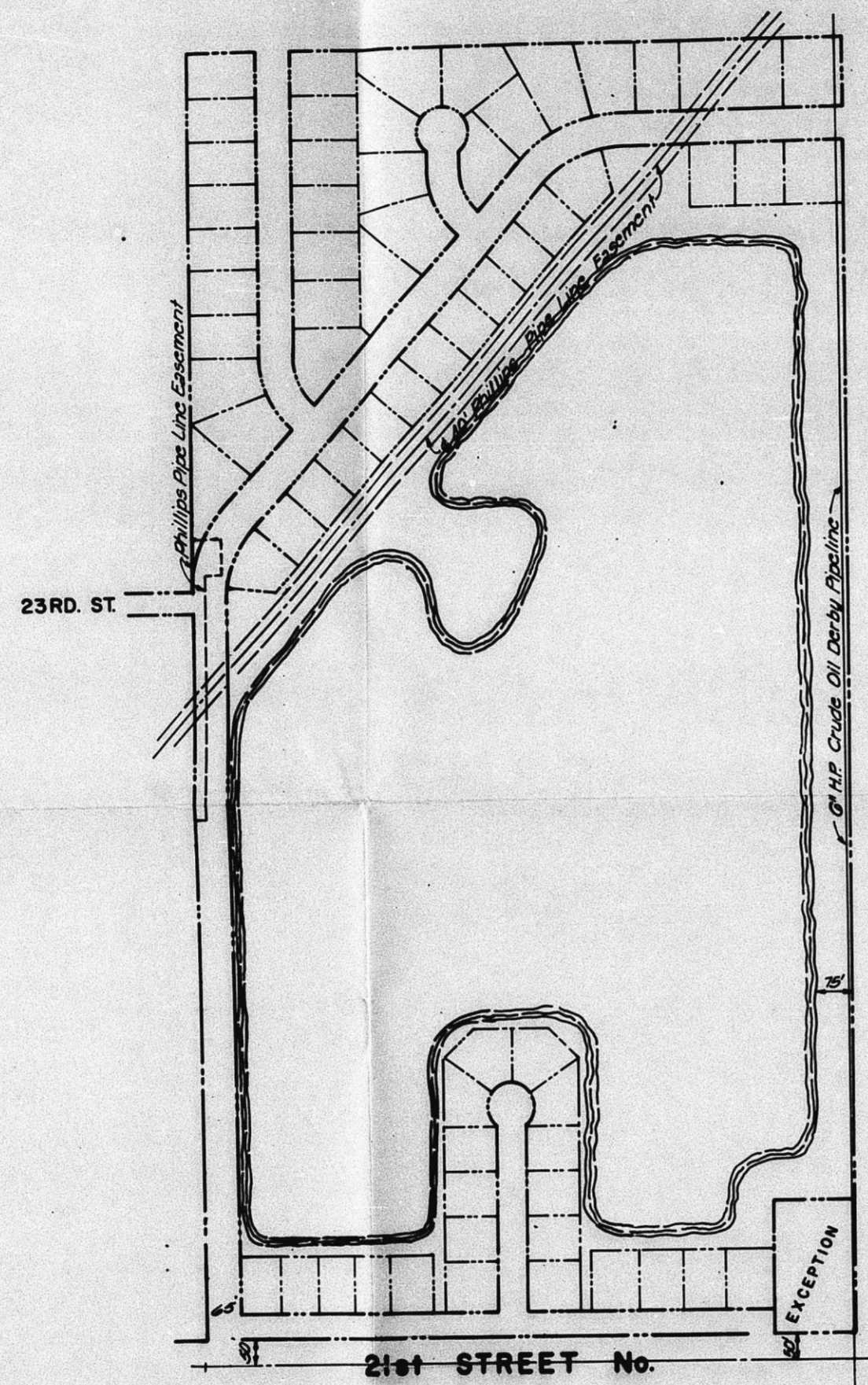
CU-292
 MAPC approved 5-15-86
 BGC approved 6-11-86



OPERATIONAL PLAN

FOUNDATION, INC.
BIG RIVER SAND (SUBSIDIARY)
 CONDITIONAL USE
 (C.U. 333 AMENDED)

MAR. COPY 1 of 2



REDEVELOPMENT PLAN

OPERATIONAL PLAN

CU-292
 MAPC approved 5-15-86
 BGC approved 6-11-86

FOUNDATION, INC.
BIG RIVER SAND (SUBSIDIARY)
 CONDITIONAL USE
 (C.U. 388 AMENDED)

WARD COPY 2 of 2

FILMED FROM THE BEST AVAILABLE COPY