

ACTION

DATE

COMMITTEE _____

M.A.P.C. _____

B.C.C./B.C.C.C. Accept 5-17-83
P.O.
PASTOR 8-5-83

D-1150 - U.S.D. 259 dedicates street ROW for S $\frac{1}{2}$ of Murdock and a sidewalk easement adjacent to the street. Generally located east of Edgemoor 1/4 mile north of Central.

DEDICATION REPORT AND PROGRESS

MAP No. 5848B
 SEC. No. _____
 TWP. No. _____
 RANGE No. _____

CASE No. D - 1150

ASSOCIATED CASE NO. S/D 83-11
 Central Avenue Plaza

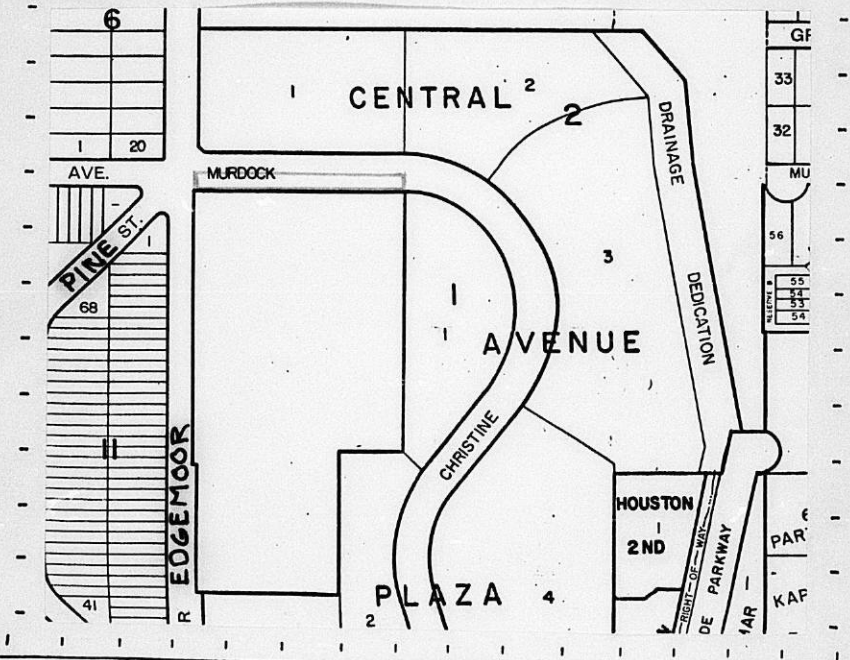
1. OFFER TO DEDICATE: Street ROW for S $\frac{1}{2}$ of Murdock, & a sidewalk easement/
 GENERALLY LOCATED: East of Edgemoor 1/4 mile north of Central.

LEGALLY DESCRIBED AS:

DEDICATED BY: U.S.D 259

ADDRESS: _____ PHONE _____
 PURPOSE OF DEDICATION: _____

II. SKETCH.



III. FILED 4-21-83
 POSTED TO ATLAS _____
 S/D COMM. ACTION _____
 M.A.P.C. ACTION _____

B.C.C. ACTION 5--17-83 Accepted
 PLACED ON RECORD _____
 CITY CLERKS No. _____

DEDICATION

D-1150

KNOW ALL MEN BY THESE PRESENTS:

That for and in consideration of the sum of One Dollar (\$1.00) and other good and valuable considerations, the receipt of which is hereby acknowledged, the undersigned, Unified School District No. 259

being the owner of the following described real estate in Sedgwick County, Kansas, to wit:

The north 42.5 feet of a tract described as beginning at the northwest corner of the SW 1/4 of the SE 1/4 of Section 13, Township 27 South, Range 1 East of the 6th P.M., Sedgwick County, Kansas; thence south 650 feet; thence east 506 feet; thence north 650 feet; thence west 506.18 feet to point of beginning, except existing street right-of-way;

AND

Beginning at a point 42.5 feet south and 55 feet east of the northwest corner of the SW 1/4 of the SE 1/4 of Section 13, Township 27 South, Range 1 East of the 6th P.M., Sedgwick County, Kansas; thence west parallel with the north line of said SW 1/4 for a distance of 15 feet; thence south parallel with the west line of said SW 1/4 for a distance of 15 feet; thence north-easterly to the point of beginning.

does hereby dedicate the above described real estate to the public for street purposes.

Executed this 18th day of April, 19 83.

Joyce Focht
 Joyce Focht, President, Board of Education
Martin Hartley
 Martin Hartley, Clerk of the Board

STATE OF KANSAS)
 SEDGWICK COUNTY) SS

The foregoing instrument was acknowledged before me this 18th day of April, 1983, by Joyce Focht, President, and Martin Hartley, Clerk (Name and title of position) of the Board of Education, Unified School District No. 259, Wichita, Sedgwick County, Kansas.

L. J. Carter
 Notary Public

SEAL

My appointment expires: January 18, 1986

4-21-83

SIDEWALK EASEMENT

THIS EASEMENT made this 18th day of April,
1983, by and between Unified School District No. 259
of the first part and the City of Wichita, of the second part.

WITNESSETH: That the said first party, in consideration of the sum of One Dollar. (\$1.00) and other valuable consideration, the receipt whereof is hereby acknowledged, does hereby grant and convey unto the said second party a perpetual right-of-way and easement for the purpose of constructing, maintaining, and repairing a public sidewalk over and along the following described real estate situated in Sedgwick County, Kansas, to wit:

The south 5 feet of the north 47.5 feet of a tract described as beginning at the northwest corner of the SW 1/4 of the SE 1/4 of Section 13, Township 27 South, Range 1 East of the 6th P.M., Sedgwick County, Kansas; thence south 650 feet; thence east 506 feet; thence north 650 feet; thence west 506.18 feet to point of beginning; except street right-of-way.

And said second party is hereby granted the right to enter upon said premises at any time for the purpose of constructing, maintaining, and repairing such sidewalk.

IN WITNESS WHEREOF: The said first party has signed these presents the day and year first written.

Unified School District No. 259

Joyce Focht
Joyce Focht, President, Board of Education

Martin Hartley
Martin Hartley, Clerk of the Board

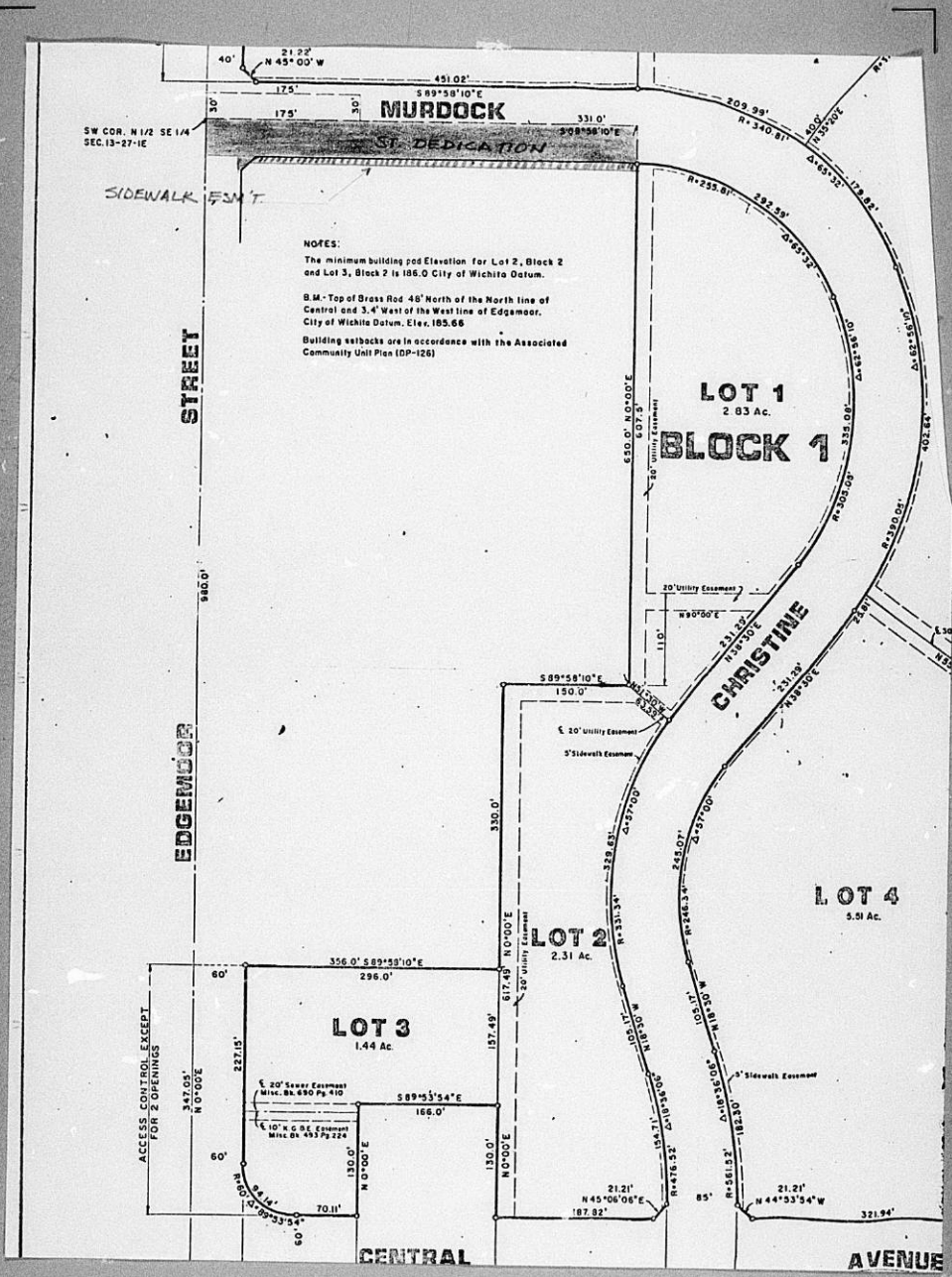
STATE OF KANSAS)
SEDGWICK COUNTY) SS

The foregoing instrument was acknowledged before me this 18th day of April, 1983, by Joyce Focht, President, and Martin Hartley, (Name and title of position).
Clerk of the Board of Education, Unified School District No. 259, Wichita, Sedgwick County, Kansas.

L. Dunc Carter
Notary Public

SEAL

My appointment expires: January 18, 1986



NOTES:
 The minimum building rod Elevation for Lot 2, Block 2 and Lot 3, Block 2 is 186.0 City of Wichita Datum.
 B.M. - Top of Brass Rod 48' North of the North line of Central and 3.4' West of the West line of Edgemoor, City of Wichita Datum, Elev. 185.6
 Building setbacks are in accordance with the Associated Community Unit Plan (DP-126)

SW COR. N 1/2 SE 1/4 SEC. 13-27-1E

SIDEWALK ESM'T.

STREET

EDGEMOOR

CENTRAL

AVENUE

LOT 1
2.83 Ac.
BLOCK 1

CHRISTINE

LOT 2
2.31 Ac.

LOT 3
1.44 Ac.

LOT 4
5.51 Ac.

ACCESS CONTROL EXCEPT FOR 2 OPENINGS

20' Sewer Easement
Misc. Bk. 430 Pa. 410

10' N.G. & S.E. Easement
Misc. Bk. 433 Pa. 224

50.0' R.O. 0.00'E
607.5
20' Utility Easement

20' Utility Easement

20' Utility Easement
5' Sidewalk Easement

5' Sidewalk Easement

940.0'

330.0'

130.0'

130.0'

130.0'

130.0'

130.0'

130.0'

130.0'

130.0'

130.0'

130.0'

130.0'

130.0'

130.0'

130.0'

130.0'

130.0'

130.0'

130.0'

130.0'

130.0'

130.0'

130.0'

130.0'

130.0'

130.0'

130.0'

130.0'

130.0'

130.0'

130.0'

130.0'

130.0'

130.0'

130.0'

130.0'

130.0'

130.0'

130.0'

130.0'

130.0'

130.0'

130.0'

130.0'

130.0'

130.0'

130.0'

130.0'

130.0'

130.0'

130.0'

130.0'

130.0'

130.0'

130.0'

130.0'

130.0'

130.0'

130.0'

130.0'

130.0'

130.0'

130.0'

130.0'

130.0'

130.0'

130.0'

130.0'

130.0'

130.0'

130.0'

130.0'

130.0'

130.0'

130.0'

130.0'

130.0'

130.0'

130.0'

130.0'

130.0'

130.0'

130.0'

130.0'

130.0'

130.0'

130.0'

130.0'

130.0'

130.0'

130.0'

130.0'

130.0'

130.0'

130.0'

130.0'

130.0'

130.0'

130.0'

130.0'

130.0'

130.0'

130.0'

130.0'

130.0'

130.0'

130.0'

130.0'

130.0'

130.0'

130.0'

130.0'

130.0'

130.0'

130.0'

130.0'

130.0'

130.0'

130.0'

130.0'

130.0'

130.0'

130.0'

130.0'

130.0'

130.0'

130.0'

130.0'

130.0'

130.0'

130.0'

130.0'

130.0'

130.0'

130.0'

130.0'

130.0'

130.0'

130.0'

130.0'

130.0'

130.0'

130.0'

130.0'

130.0'

130.0'

130.0'

130.0'

130.0'

130.0'

130.0'

130.0'

130.0'

130.0'

130.0'

130.0'

130.0'

130.0'

130.0'

130.0'

130.0'

130.0'

130.0'

130.0'

130.0'

130.0'

130.0'

130.0'

130.0'

130.0'

130.0'

130.0'

130.0'

130.0'

130.0'

130.0'

130.0'

130.0'

130.0'

130.0'

130.0'

130.0'

130.0'

130.0'

130.0'

130.0'

130.0'

130.0'

130.0'

130.0'

130.0'

130.0'

130.0'

130.0'

130.0'

130.0'

130.0'

130.0'

130.0'

130.0'

130.0'

130.0'

130.0'

130.0'

130.0'

130.0'

130.0'

130.0'

130.0'

130.0'

130.0'

130.0'

130.0'

130.0'

130.0'

130.0'

130.0'

130.0'

130.0'

130.0'

130.0'

130.0'

130.0'

130.0'

130.0'

130.0'

130.0'

130.0'

130.0'

130.0'

130.0'

130.0'

130.0'

130.0'

U.S.D. 259
dedicates
street s.o.w.
for $5\frac{1}{2}$ Murlock
and a sidewalk
easement adjacent
to the street. ~~Generally~~
~~located~~ east
of Edgewood $\frac{1}{4}$
mile north
of Central.

Map 5848B

(assoc. with
Central Avenue
Plaza S/D 83-11)

B.C.C. ~~accepted~~
5-17-83

documents received
4-21-83