

648c

ACTION

DATE

S/D COMMITTEE _____

M.A.P.C. _____

B.C.C./B.CO.C. Approved 9/29/87

D-1477 - Jeanne Fair dedicates access control to Central Avenue, located on the north side of Central, east of Battin.

Posted 9-25-87
KX

6248c

ACTION

DATE

S/D COMMITTEE

M.A.P.C.

B.C.C./B. GO.C. Approved

9/29/87

D-1477 - Jeanne
control to Cen
the north side
Battin.

DEDICATION REPORT AND PROGRESS

MAP NO. 5848 C
SEC. NO.
TWP. NO.
RANGE

CASE NO.: D-1477

ASSOCIATED CASE: Z-2863

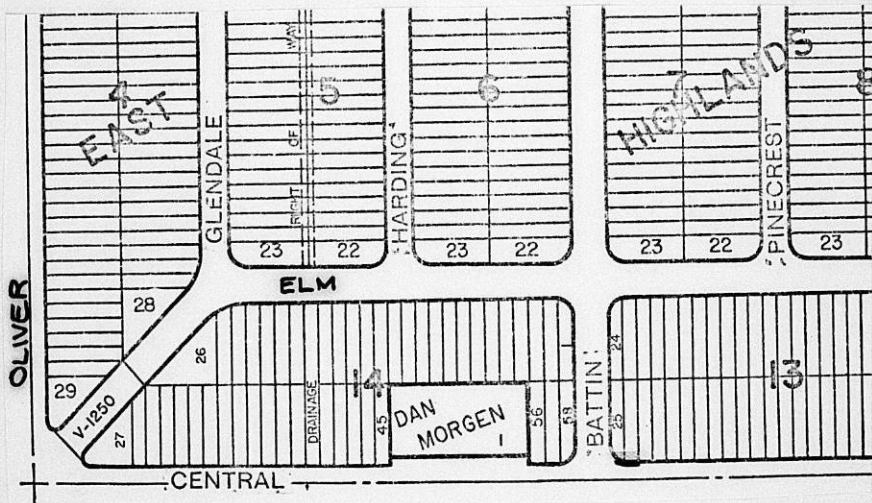
1. OFFER TO DEDICATE: Access control.
GENERALLY LOCATED: North side of Central, east of Battin.
LEGALLY DESCRIBED AS:

Lots 25 and 26, Block 13, East Highlands Addition to Wichita, Sedgwick County, Kansas.

DEDICATED BY: Jeanne Fair

PURPOSE OF DEDICATION: *Zone change requirement*

II. SKETCH.



III. FILED 9/23/87
POSTED TO ATLAS _____
S/D COMM. ACTION _____
M.A.P.C. ACTION _____

B.C.C. ACTION 9/29/87 *accept*
PLACED ON RECORD _____
CITY CLERKS NO. _____

