

BUILDING CONTROL POINTS
 S.E. CORNER STA. 10+00-25' LT.
 S.W. CORNER STA. 10+00-64.33' LT.
 N.E. CORNER STA. 10+33.33-25' LT.
 N.W. CORNER STA. 10+33.33-64.33' LT.
 (DRIVE STATIONING)

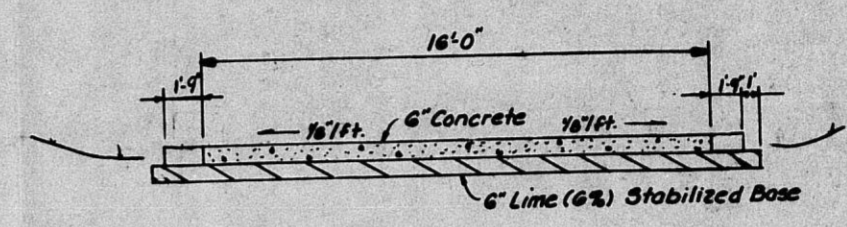
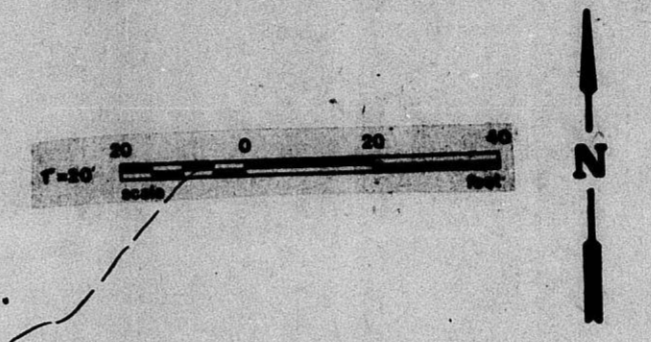
S/4 COR. SEC. 30,
 T26S, R 2E, SEDGWICK
 COUNTY, KANSAS

Sta. 9+08.69
 Begin approach paving

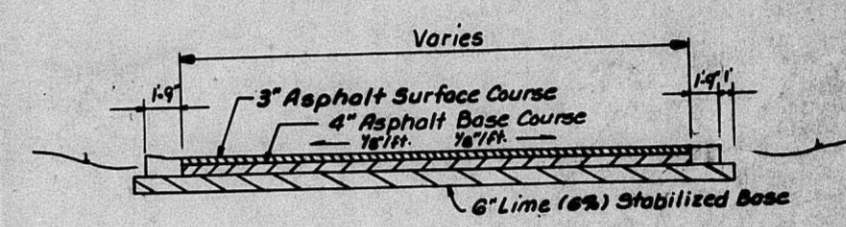
STATION EQUATION:
 STA. 11+88.95-37th STREET+
 STA. 8+99.69- DRIVE

CURVE DATA FOR DRIVE
 P.I. STA. 9+27.51
 P.C. STA. 9+19.69
 P.T. STA. 9+34.66
 $\Delta = 26^{\circ}00'00''$
 R = 33.00'
 T = 7.62'
 L = 14.97'

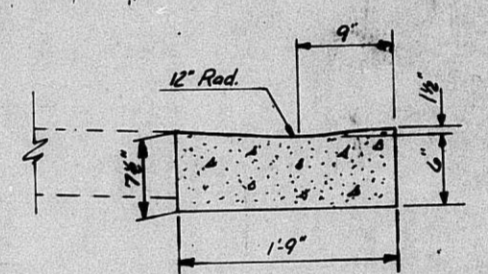
DR 78-36



TYPICAL DRIVE SECTION



APPROACH PAVING



TYPICAL SECTION CURB & GUTTER

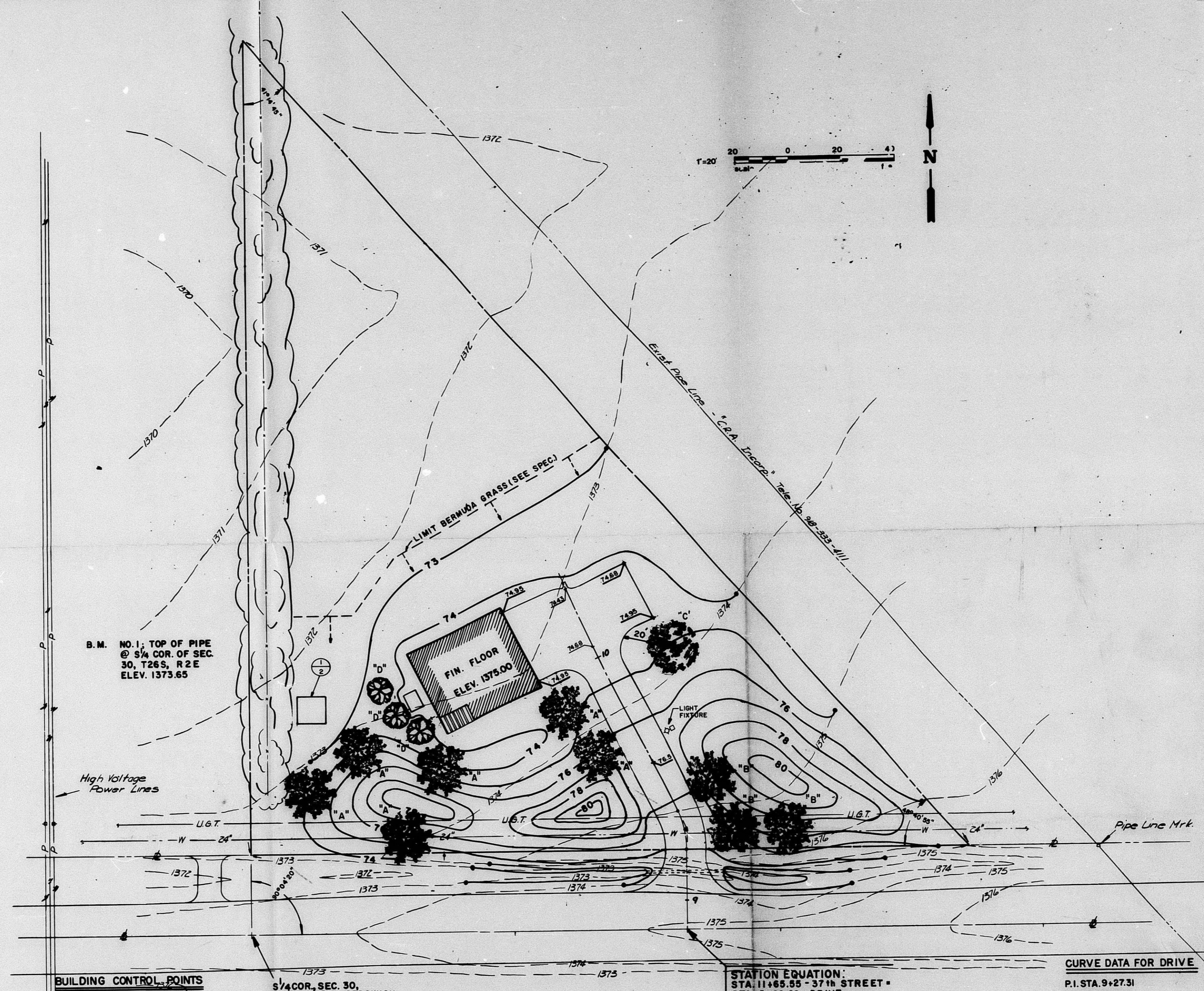
OFFICE COPY
 JOB NOT REMOVED

GENERAL NOTES

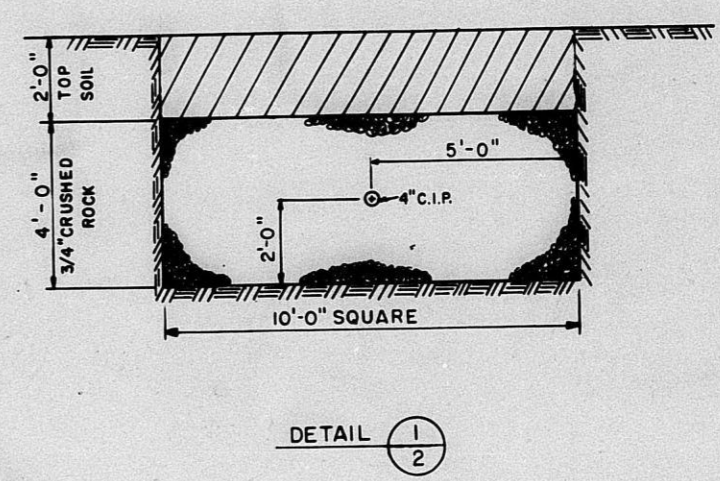
1. C.M.R. CULVERT - Shall be laid in a manner which will provide good ditch drainage but will not cause a non-uniform approach to drive.
2. CONTROL JOINTS - shall not have a spacing greater than 20'-0".
3. PARKING AREA - construction shall comply with that of the typical drive section, however the contractor maintain final grades as shown on sheet 3 as spot elevations.

dp	WICHITA DEPARTMENT OF WATER AND WATER POLLUTION CONTROL 37th Street Booster Pump Station	
	PAVING	
ENGINEER: G. M. POE & ASSOCIATES CONSULTING ENGINEERS	DR. T. J. ...	SCALE: HORIZONTAL DATE: NOV. 1978 SHEET 4 OF 11

FILMED FROM THE BEST AVAILABLE COPY



PLANTING SCHEDULE				
"A"	AUSTRIAN PINE (PINUS NIGRA)	6'-8"	GUY EACH TREE	BB
"B"	SCOTCH PINE (PINUS SYLVESTRIS)	6'-8"	GUY EACH TREE	BB
"C"	COMMON PISTACHIO (PISTACIA VERA)	6'-8"	GUY EACH TREE	BB
"D"	PYRACANTHA COCCINEA (LALANDII PYRACANTHA)	5 GAL.		



OFFICE COPY
DO NOT REMOVE



BUILDING CONTROL POINTS
 S. E. CORNER STA. 10+00.25' LT.
 S. W. CORNER STA. 10+00.64.33' LT.
 N. E. CORNER STA. 10+33.33-25' LT.
 N. W. CORNER STA. 10+33.33-64.33' LT.
 (DRIVE STATIONING)

3/4 COR. SEC. 30,
 T. 26 S., R. 2 E., SEDGWICK
 COUNTY, KANSAS

STATION EQUATION:
 STA. 11+85.05 - 37th STREET =
 STA. 8+89.69 - DRIVE

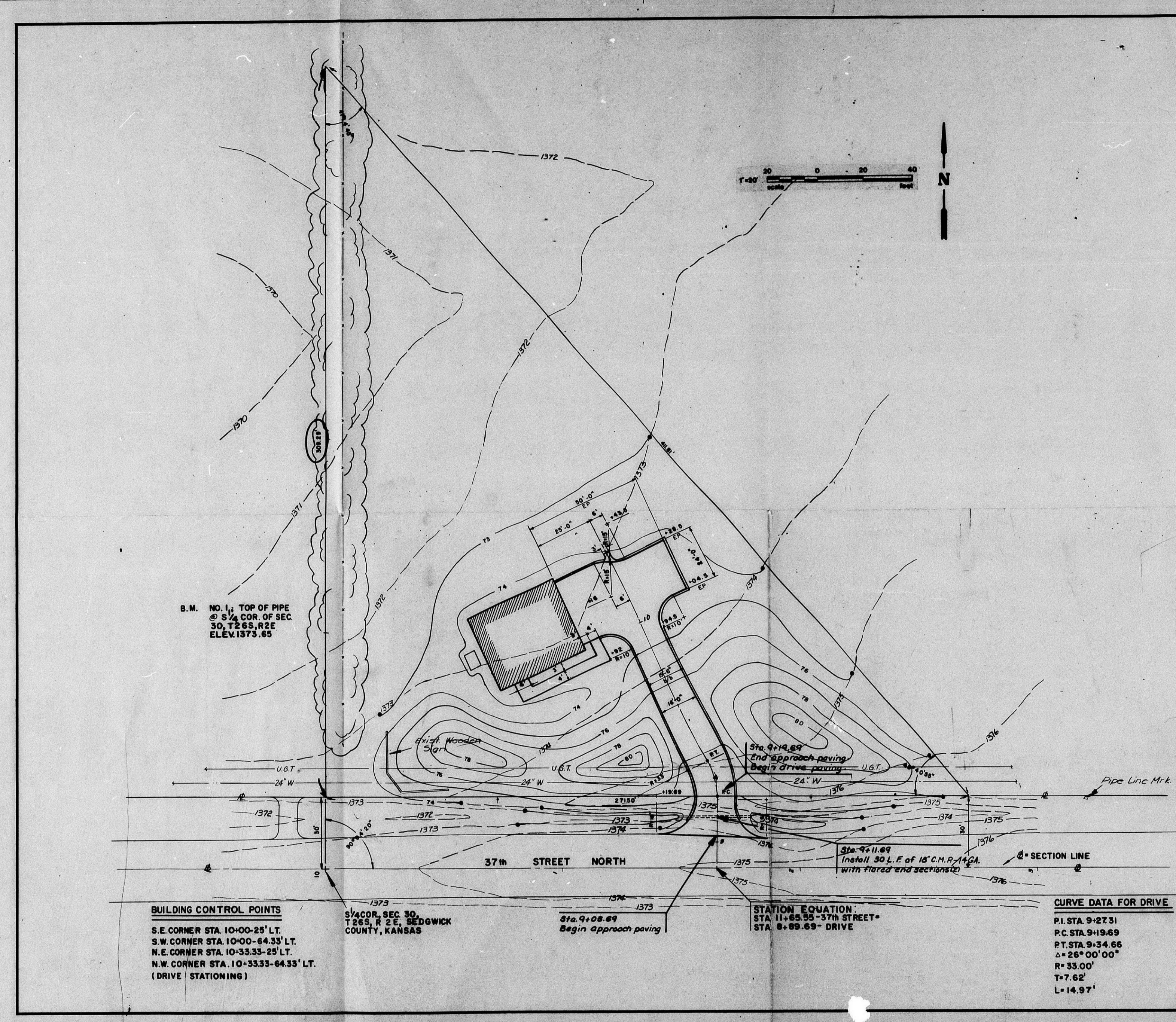
CURVE DATA FOR DRIVE
 P.I. STA. 9+27.31
 P.C. STA. 8+9.69
 P.T. STA. 9+34.66
 Δ = 28°00'00"
 R = 33.00'
 T = 7.62'
 L = 14.97'

DR 78-34



WICHITA DEPARTMENT OF WATER
 AND
 WATER POLLUTION CONTROL
 37th Street Booster Pump Station
GRADING & LANDSCAPING
 ENGINEER: G.M. ENG. TECH: J.W.
 DRAWN BY: J.W. SCALE: NOTED
 DATE: NOV. 1976 SHEET 2 OF 11

FILMED FROM THE BEST
 AVAILABLE COPY



BUILDING CONTROL POINTS
 S.E. CORNER STA. 10+00-25' LT.
 S.W. CORNER STA. 10+00-64.33' LT.
 N.E. CORNER STA. 10+33.33-25' LT.
 N.W. CORNER STA. 10+33.33-64.33' LT.
 (DRIVE STATIONING)

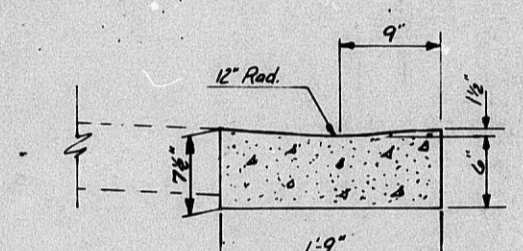
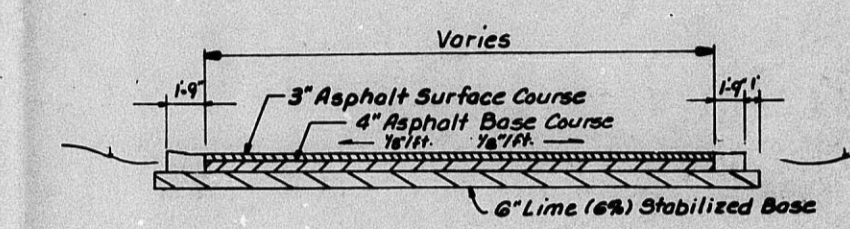
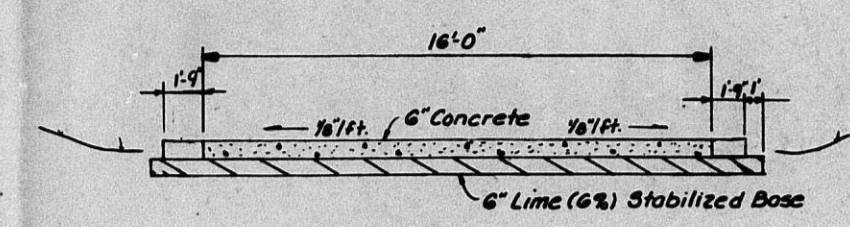
3/4 COR. SEC. 30,
 T26S, R 2E, SEDGWICK
 COUNTY, KANSAS

Sta. 9+08.69
 Begin approach paving

STATION EQUATION:
 STA. 11+65.55 - 37th STREET -
 STA. 8+08.69 - DRIVE

CURVE DATA FOR DRIVE
 P.I. STA. 9+27.31
 P.C. STA. 9+19.69
 P.T. STA. 9+34.66
 $\Delta = 26^{\circ}00'00''$
 $R = 33.00'$
 $T = 7.62'$
 $L = 14.97'$

DR 78-34



- GENERAL NOTES**
1. C.M.R. CULVERT - Shall be laid in a manner which will provide good ditch drainage but will not cause a non-uniform approach to drive.
 2. CONTROL JOINTS - shall not have a spacing greater than 20'-0".
 3. PARKING AREA - construction shall comply with that of the typical drive section, however the contractor maintain final grades as shown on sheet 3 as spot elevations.

dp WICHITA DEPARTMENT OF WATER AND WATER POLLUTION CONTROL
 37th Street, Booster Pump Station
PAVING

ENGINEER: G.M. TING, J.W.
 DRAWN BY: M.F. SCALE: NOTED
 DATE: MAY, 1977 SHEET 4 OF 11