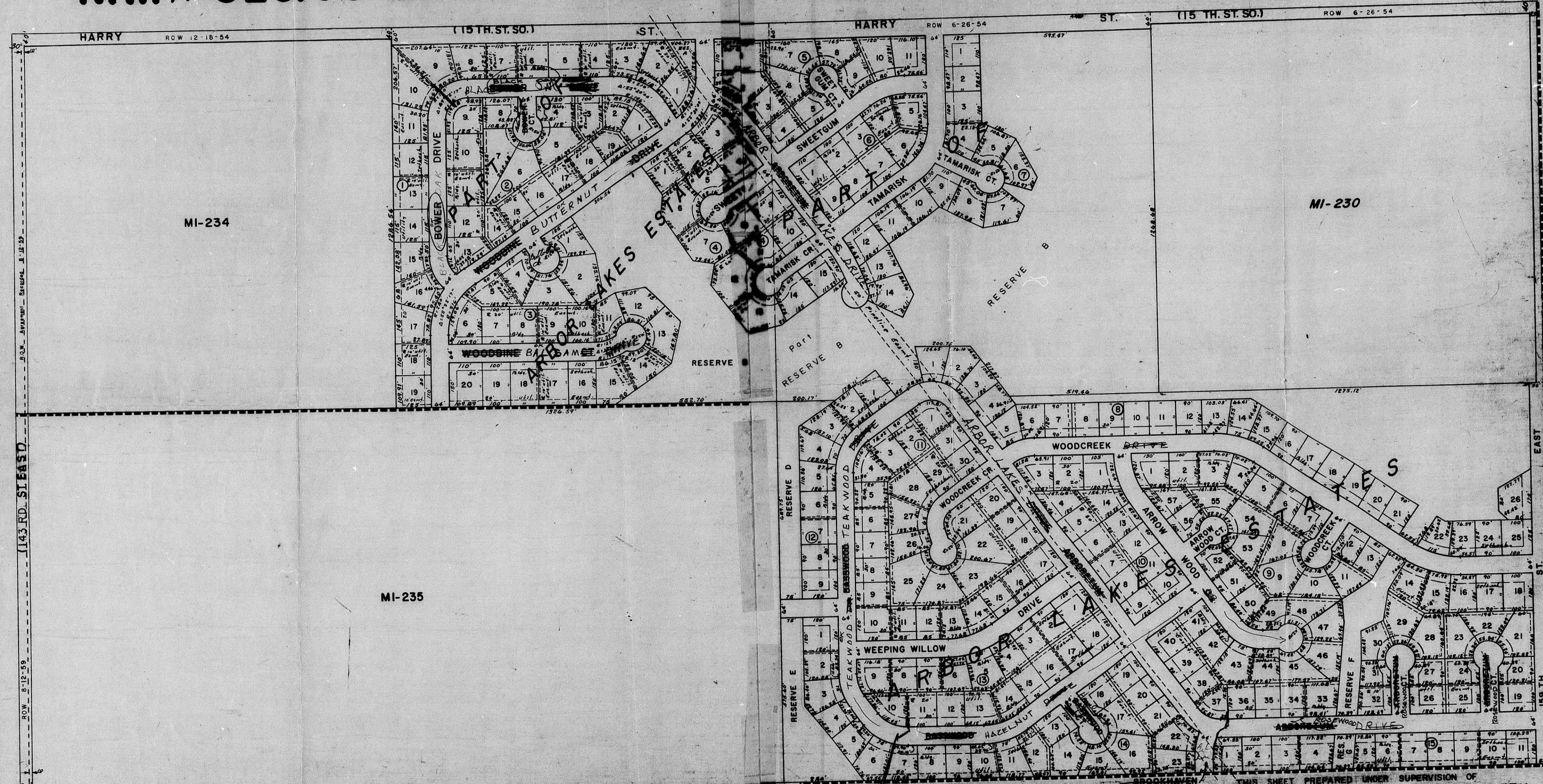


N.W. ¼ SEC. 36 TWP. 27 R. 2E.

N.E. ¼ SEC. 36 TWP. 27 R. 2E.



MI-234

MI-230

MI-235

THIS SHEET PREPARED UNDER SUPERVISION OF  
SEGWICK COUNTY CLERK

THIS SHEET PREPARED UNDER SUPERVISION OF  
SEGWICK COUNTY CLERK

DR 79-1

FILMED FROM THE BEST  
AVAILABLE COPY