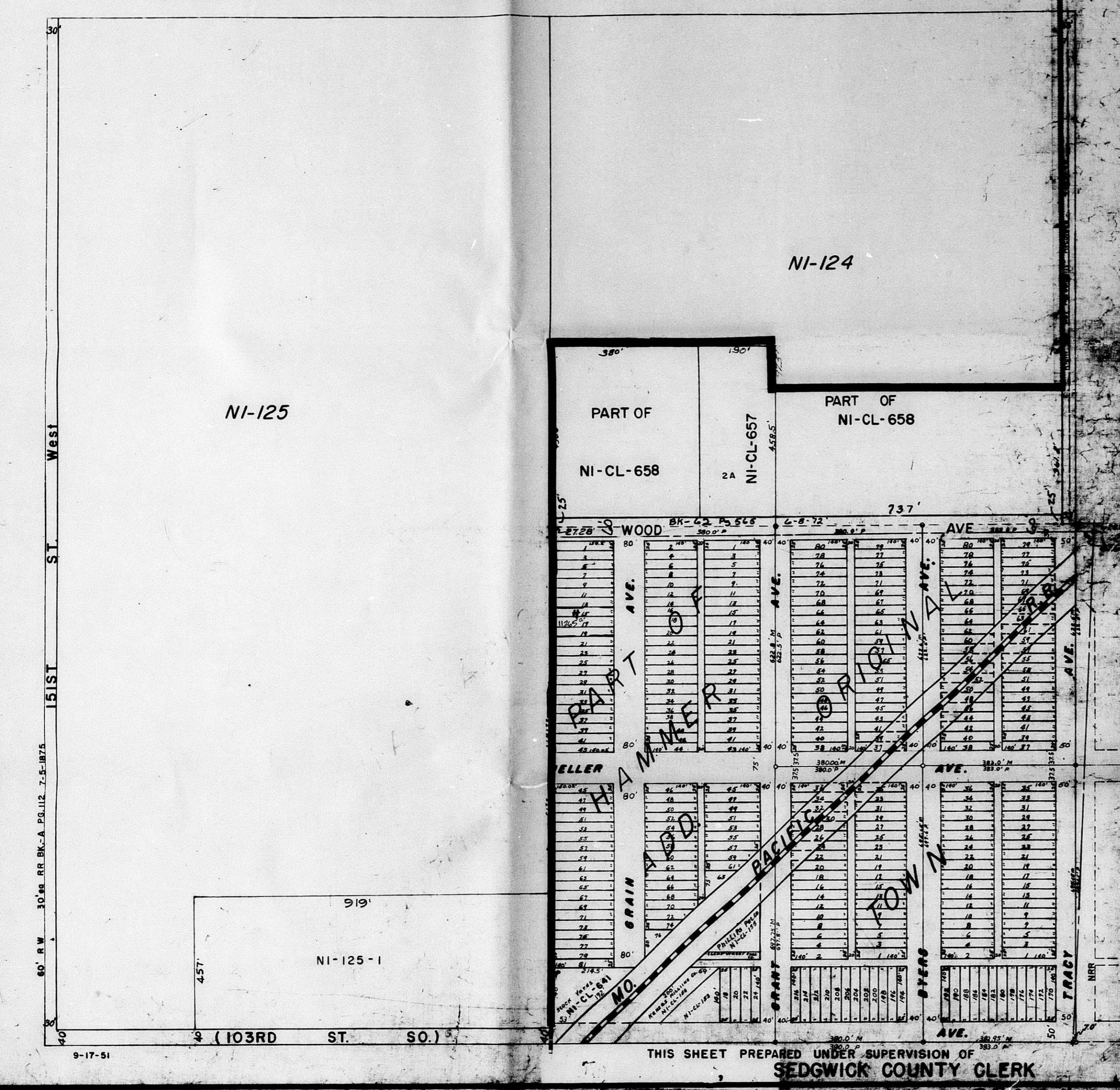


PART OF  
**CLEARWATER**  
S.W. 1/4 SEC. 23, TWP. 29 S. R. 2 W.

CLEARWATER PLAN UPDATE  
3-83

NI  
98



PART OF CLEARWATER  
N.E. 1/4 SEC. 26, TWP. 29 S. R. 2 W.

CLEARWATER PLAN UPDATE  
3-83

NI  
101



