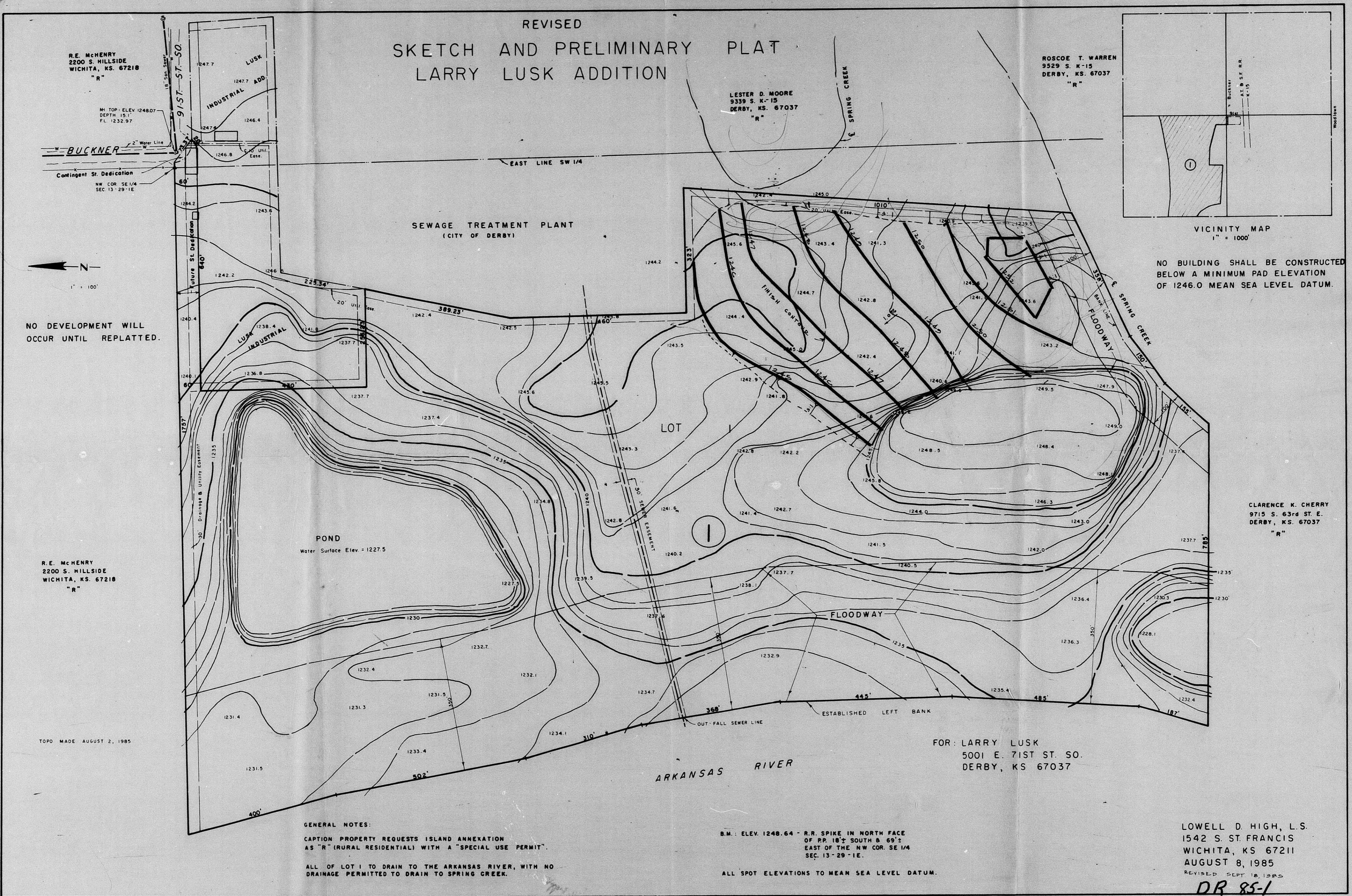


REVISED
 SKETCH AND PRELIMINARY PLAT
 LARRY LUSK ADDITION



R.E. McHENRY
 2200 S. HILLSIDE
 WICHITA, KS. 67218
 "R"

LESTER D. MOORE
 9359 S. K-15
 DERBY, KS. 67037
 "R"

ROSCOE T. WARREN
 9329 S. K-15
 DERBY, KS. 67037
 "R"

CLARENCE K. CHERRY
 9715 S. 63rd ST. E.
 DERBY, KS. 67037
 "R"

NO DEVELOPMENT WILL
 OCCUR UNTIL REPLATTED.

R.E. McHENRY
 2200 S. HILLSIDE
 WICHITA, KS. 67218
 "R"

TOPO MADE AUGUST 2, 1985

GENERAL NOTES:
 CAPTION PROPERTY REQUESTS ISLAND ANNEXATION
 AS "R" (RURAL RESIDENTIAL) WITH A "SPECIAL USE PERMIT".
 ALL OF LOT 1 TO DRAIN TO THE ARKANSAS RIVER, WITH NO
 DRAINAGE PERMITTED TO DRAIN TO SPRING CREEK.

B.M.: ELEV. 1248.64 - R.R. SPIKE IN NORTH FACE
 OF RR. 18'S SOUTH 8 69' E.
 EAST OF THE NW COR. SE 1/4
 SEC. 13-29-1E.
 ALL SPOT ELEVATIONS TO MEAN SEA LEVEL DATUM.

FOR: LARRY LUSK
 5001 E. 71ST ST. SO.
 DERBY, KS 67037

LOWELL D. HIGH, L.S.
 1542 S. ST. FRANCIS
 WICHITA, KS 67211
 AUGUST 8, 1985
 REVISED SEPT 18, 1985

DR 85-1

NO BUILDING SHALL BE CONSTRUCTED
 BELOW A MINIMUM PAD ELEVATION
 OF 1246.0 MEAN SEA LEVEL DATUM.