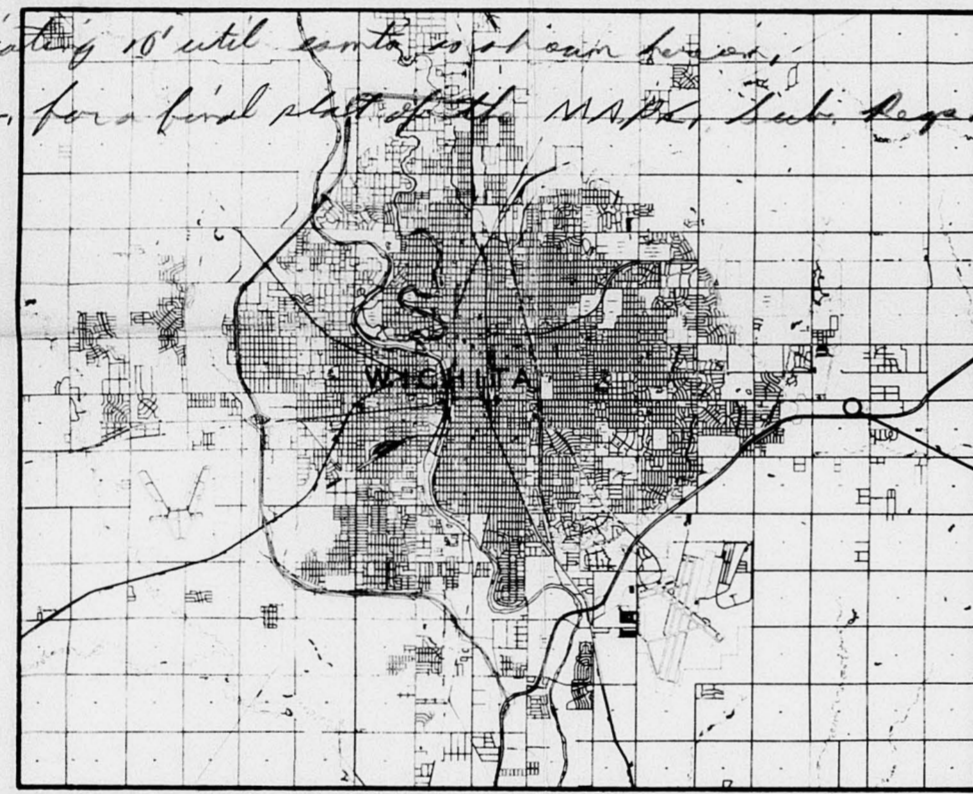


H

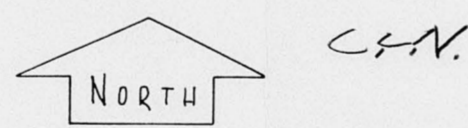
SID 70-7

approved subject to:

1. Indicate 26' add. x-o-w for frontage rd. as shown hereon.
2. Label frontage rd. as Kellogg Drive.
3. Indicate a 35' Bldg setback as shown hereon.
4. Indicate the south 115' of the plot as a "drainage dedication" with proper language in plat's text.
5. The applicants agree shall contact M.B. Mitchell of the Maintenance Div. relative to indicating that area north of the drainage dedication which is presently covered by a recorded "floodway". The floodway is to be indicated on the final plat with proper language obtained from said office in the plat's text.
6. Install or guarantee installation of sidewalk adj. to the north side of Kellogg Drive; the total estimated construction cost to be in the amount of \$535.
7. Indicate existing private K.G.S. sewer as recorded in case back 315, P. 311.
8. Indicate 16' drainage and utility eas. as shown hereon.
9. Indicate 10' utility eas. as shown hereon.
10. Req. for a final plat of the MAP's Sub. Map.

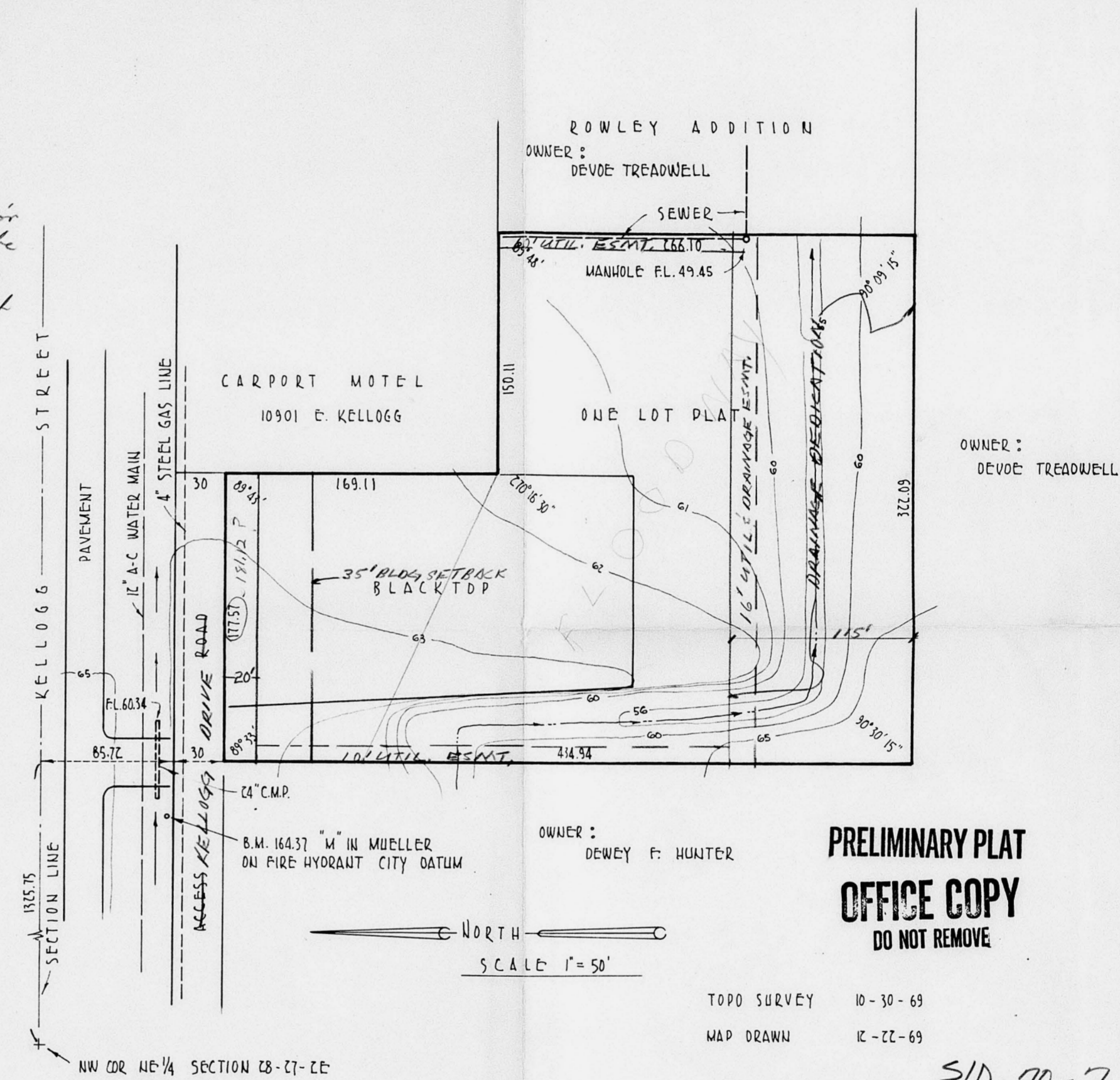


Note: see letter dated 2-29-70



VICINITY MAP

6146



PRELIMINARY PLAT
OFFICE COPY
DO NOT REMOVE

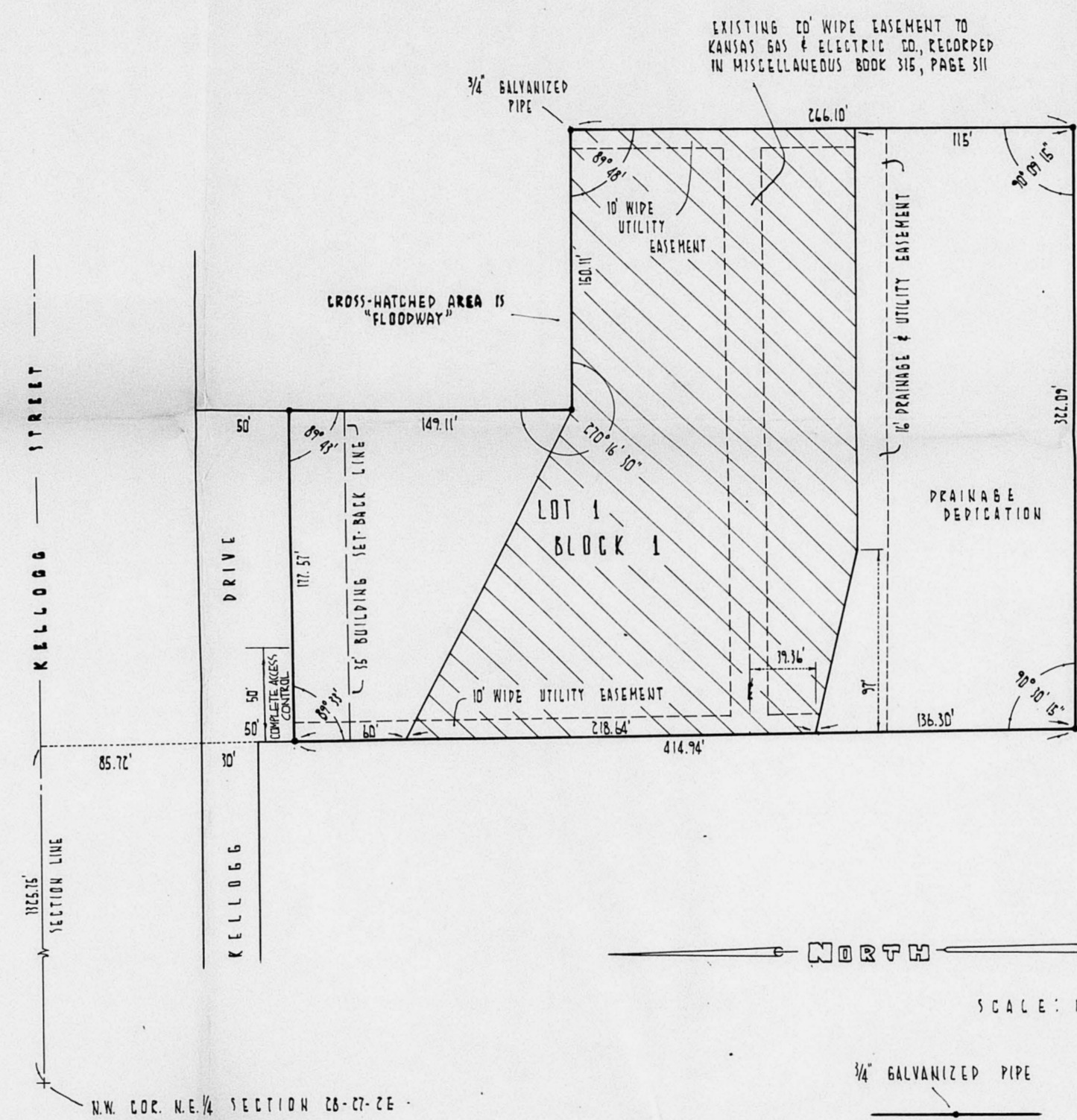
TOPO SURVEY 10-30-69
MAP DRAWN 12-22-69

SID 70-7

PRELIMINARY PLAT

HOLSTEAD ADDITION

REISS AND GOODNESS ENGINEERS
2160 E. DOUGLAS WICHITA - KANSAS



PLAT
HOLSTED — ADDITION
 TO THE CITY OF WICHITA
 SEDGWICK COUNTY - KANSAS
 1970

STATE OF KANSAS } ss.
 COUNTY OF SEDGWICK }
 I, Charles M. Goodness, being a duly licensed professional engineer in said county and state, do hereby certify that I have surveyed and platted **HOLSTED ADDITION** to the City of Wichita, Sedgewick County, Kansas, described as follows: Beginning 1,325.75 feet east and 85.70 feet south of the northeast corner of the NE 1/4 of Section 28, T 27 S, R 2 E of the 6th P.M., Sedgewick County, Kansas and running thence east parallel with the north section line for a distance of 177.57 feet; thence south at a deflection angle to the right of 90°31' for a distance of 139.11 feet; thence east at a deflection angle to the left of 90°16'30" for a distance of 150.11 feet; thence south at a deflection angle to the right of 90°12' for a distance of 266.10 feet; thence west at a deflection angle to the right of 89°59'45" for a distance of 327.09 feet; thence north at a deflection angle to the right of 89°59'45" for a distance of 144.91 feet to the place of beginning, containing 0.277 acres more or less. The accompanying plat is a true and correct exhibit of property surveyed.

Charles M. Goodness
 Charles M. Goodness
 (SEAL)

KNOW ALL MEN BY THESE PRESENTS:
 That we, Paul B. Douglas and Charlotte S. Douglas, his wife, have caused and land described in the engineer's certificate to be platted into a lot, block, street and drainage to be known as **HOLSTED ADDITION** to the City of Wichita, Sedgewick County, Kansas. Easements are hereby granted as indicated for utility and drainage construction and maintenance. The south 115 feet of the plat is hereby dedicated to the public for drainage purposes. The Floodway as shown on the plat shall be the responsibility of the owners of the property in the subdivision until such time as the Governing Body exercising jurisdiction elects to assume responsibility for maintenance and improvements of the drainage. Provided further, that no building shall be constructed on or within said floodway nor shall any fill, change of grade, creation of channel or other work be carried on without the permission of the Wichita-Sedgewick County Flood Control Office or their successors of Office. Street is hereby dedicated to and for the use of the public. All abutting rights of access to our front driveway drive over and across the west 50 feet of the north line of Lot 1, Block 1 are hereby granted to the City Engineer of the City of Wichita, Kansas.

Paul B. Douglas
 Paul B. Douglas
Charlotte S. Douglas
 Charlotte S. Douglas

STATE OF KANSAS } ss.
 COUNTY OF SEDGWICK }
 Be it remembered that on this 13 day of May, 1970, before me a notary public in and for said county and state came Paul B. Douglas and Charlotte S. Douglas, his wife, to me known to be the same persons who executed the foregoing instrument of writing and duly acknowledged the same as their voluntary act and deed. In testimony whereof, I have hereunto set my hand and affixed my notarial seal the day and year above written.

Wayne M. McConaughy
 Wayne M. McConaughy
 Notary Public
 Hopedale, Kansas

My Commission expires May 15, 1974
 This plat of **HOLSTED ADDITION** to the City of Wichita, Sedgewick County, Kansas has been submitted to and approved by the Wichita-Sedgewick County Metropolitan Area Planning Commission, Wichita, Kansas.

Dated this 25th day of June, 1970.
 WICHITA-SEDGWICK COUNTY METROPOLITAN AREA PLANNING COMMISSION
Wayne M. McConaughy Chairman
 Mayor V. J. Jackson
Robert A. Lakin Secretary
 Robert A. Lakin

The dedications shown on this plat accepted by the City Commissioners of the City of Wichita, Kansas this ___ day of ___, 1970.
 Mayor
 A. Price Woodard, Jr.
 City Clerk
 Ralph Eberly

The dedications shown on this plat accepted by the Board of County Commissioners of Sedgewick County, Kansas this ___ day of ___, 1970.
 Chairman
 Earl E. Rush
 Commissioner
 Tom Scott
 Commissioner
 Elmer S. Peters
 County Clerk
 Marie Warden

State of Kansas } ss.
 County of Sedgewick }
 This is to certify that this instrument was filed for record in the Register of Deeds Office at ___ A.M. - P.M. on the ___ day of ___, 1970.
 John Hale Register of Deeds
 Deputy

RECORDED ON 5-27-71
 APPROVED FOR RECORDING
 COPY DEAD - FILE

S/D 70-7