

S/D PLATS

1972 ~~1973~~
~~1974~~

PLANNING
DEPT.

A

FINAL PLAT

OFFICE COPY
DO NOT REMOVE

SD 70-27

ASPEN COURT ADDITION

WICHITA KANSAS

S/D 70-27
approved subject to:

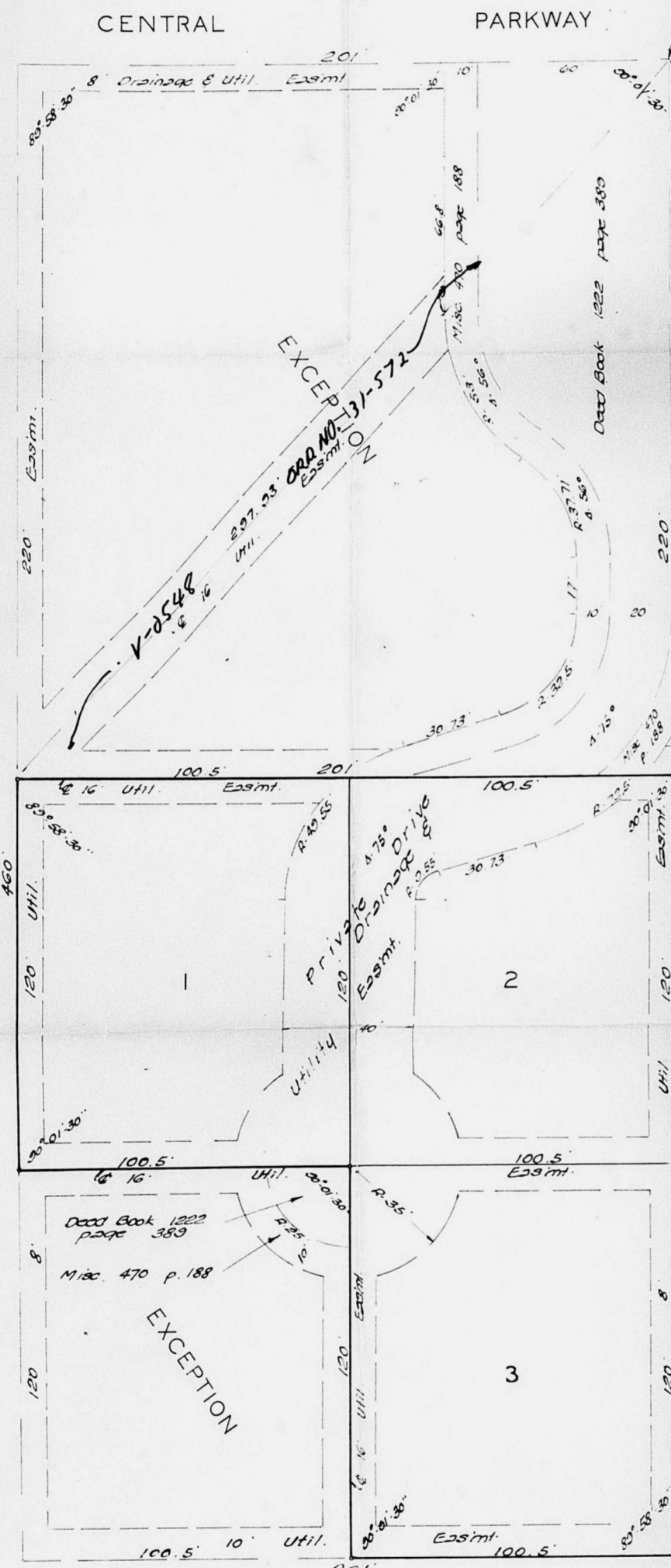
State of Kansas) ss. We, Baughman Company
Sedgewick County) ss. We, Baughman Company
Surveyors in aforesaid county and state do
hereby certify that we have surveyed and
platted "ASPEN COURT ADDITION"
Wichita, Kansas and that the accompanying
map is a true and correct exhibit of
the property surveyed described as being
lying 677 feet east and 110 feet south of
the N.E. Cor. of the N.W. 1/4 of the N.E. 1/4 of
Sec. 20 Twp. 27.3, R. 2, E. Thence south 450
feet along a line parallel to the east line
of the N.W. 1/4 of said N.E. 1/4, thence west
201 feet parallel to the north line of said
N.E. 1/4, thence north 450 feet, thence
east 201 feet to beginning.
Baughman Company
Date _____ Surveyor.

Know all men by these
and Frances J. Calkins, his wife, have
caused the land described in the survey
or certificate to be platted into lots, a
private drive and drainage to be known
as "ASPEN COURT ADDITION" Wichita,
Kansas. Easements are hereby granted
as indicated for the construction and
maintenance of all public utilities, drain-
age and a drive.

Bernard E. Calkins Frances J. Calkins

State of Kansas) ss. Be it remembered that
Sedgewick County) ss. Be it remembered that
on this _____ day of _____, 1971, before
me a notary public in aforesaid county
and state came Bernard E. Calkins and
Frances J. Calkins, to me known to be the
same persons who executed the foregoing
instrument of writing and duly acknowl-
edged the execution of the same as their vol-
untary act and deed. In testimony whereof
I have hereunto set my hand and affixed
my notarial seal the day and year above
written.

Mu Comin Exp Notary Public



This plat of "ASPEN COURT
ADDITION" Wichita, Kansas has been submitted
to and approved by the Wichita-Sedgewick
County Metropolitan Area Planning Commis-
sion, Wichita, Kansas, dated this _____ day of
1971.

Wichita-Sedgewick County Metropolitan Area
Planning Commission
1. Include appropriate language in the plat
text which excepts the exceptions from the
legal description.

This plat approved and all
boards of Commissioners of the City of
Wichita, Kansas this _____ day of
1971.

2. The 16' utility easement remaining from southwest to
northwest across the plat is to be used for
a sewer located and shall be as indicated on the plat.

This plat approved and
all applications shown herein accepted by the
Board of Commissioners, Sedgewick
County, Kansas, this _____ day of
1971.

3. The purpose or type of easement shown as recorded
across the "exceptions" shall be labeled on the
plat.

4. Contact the Water Dept. and make appropriate
arrangements for water supply to the
for extension of city water to all lots with
the subdivision. Entered on transfer rec
and this _____ day of _____, 1971.

5. Amend the plat text to include the following:
"A private drive, easement, and drainage shall be
shown and the responsibility of the owner of
said lots shall be as follows: This is to certify
that this plat was filed for record in
the office of the Register of Deeds this
_____ day of _____, 1971.

6. Copies of this instrument which shall be
and which are kept on the questions shall be
furnished to the Register of Deeds.

7. Recording in 30 days _____
Note: see letter dated 7/16/71

LLN
3/15/73 approved subject to
original conditions as listed
above. See letter dated 3/16/73
JR.

REST. S. STREET
Note: Utility easements shown on this
drawing together with those being shown
on this plat were previously granted
and recorded in Plat. Book 470-21, pages
185-186.

3/15/73 approved subject to
original conditions as listed
above. See letter dated 3/16/73
JR.

3/15/73 approved subject to
original conditions as listed
above. See letter dated 3/16/73
JR.

3/15/73 approved subject to
original conditions as listed
above. See letter dated 3/16/73
JR.

3/15/73 approved subject to
original conditions as listed
above. See letter dated 3/16/73
JR.

3/15/73 approved subject to
original conditions as listed
above. See letter dated 3/16/73
JR.

3/15/73 approved subject to
original conditions as listed
above. See letter dated 3/16/73
JR.

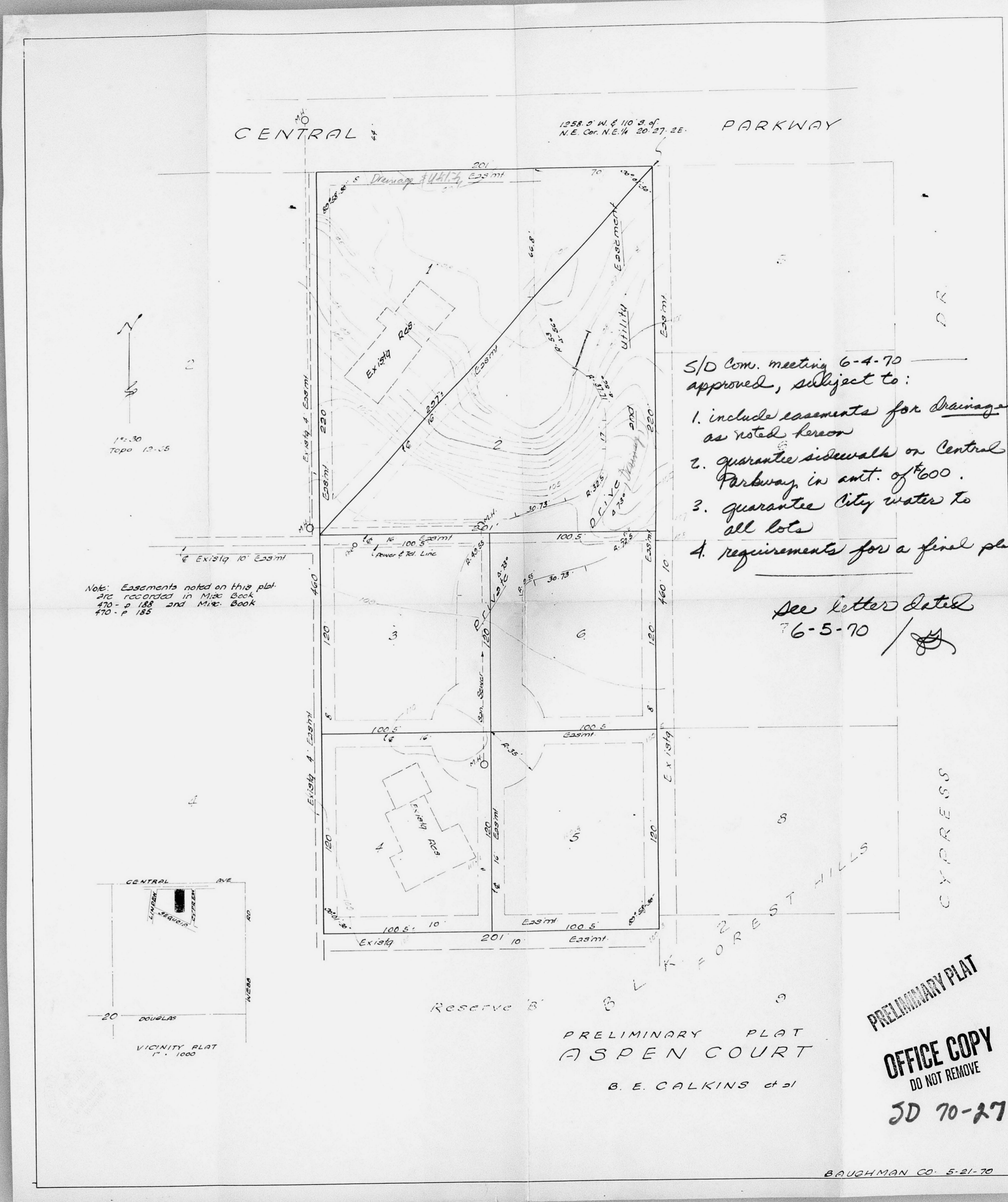
3/15/73 approved subject to
original conditions as listed
above. See letter dated 3/16/73
JR.

3/15/73 approved subject to
original conditions as listed
above. See letter dated 3/16/73
JR.

3/15/73 approved subject to
original conditions as listed
above. See letter dated 3/16/73
JR.

3/15/73 approved subject to
original conditions as listed
above. See letter dated 3/16/73
JR.

3/15/73 approved subject to
original conditions as listed
above. See letter dated 3/16/73
JR.



S/D Com. meeting 6-4-70
approved, subject to:
1. include easements for drainage
as noted herein
2. guarantee sidewalk on Central
Parkway in amt. of 600.
3. guarantee city water to
all lots
4. requirements for a final plat

See letter dated
7-6-5-70 / JR

PRELIMINARY PLAT

OFFICE COPY
DO NOT REMOVE

SD 70-27

BAUGHMAN CO. 5-21-70